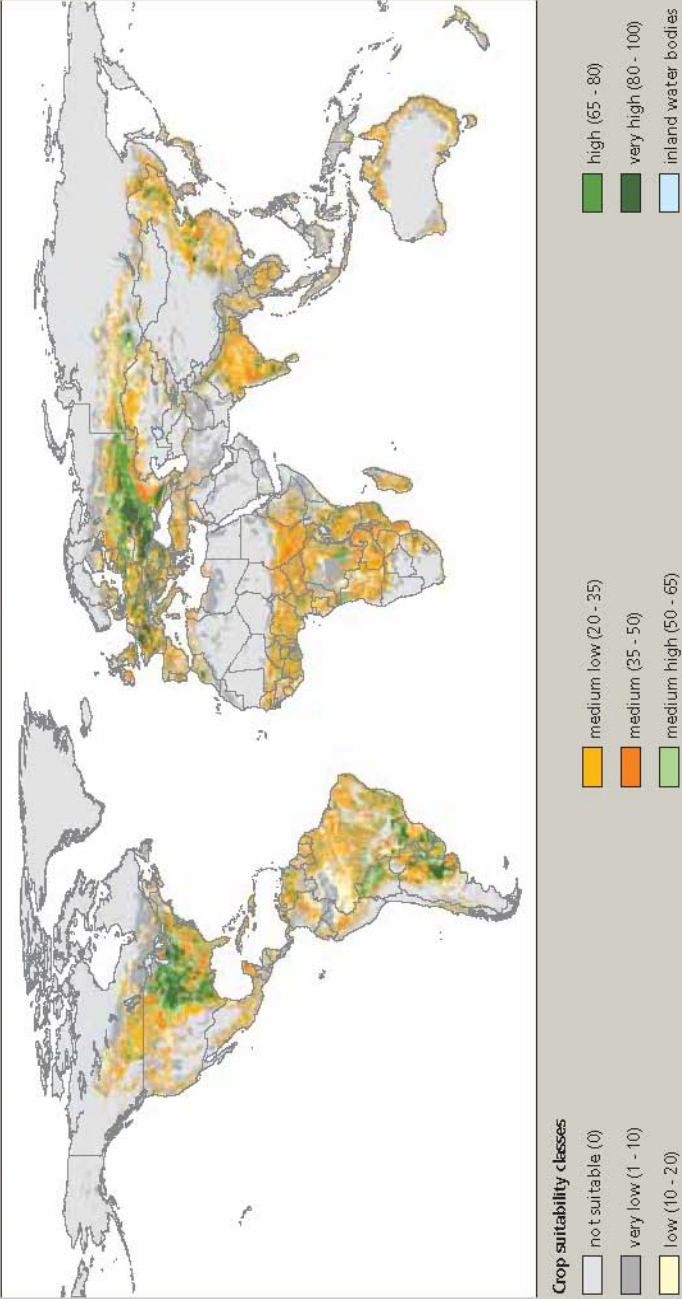
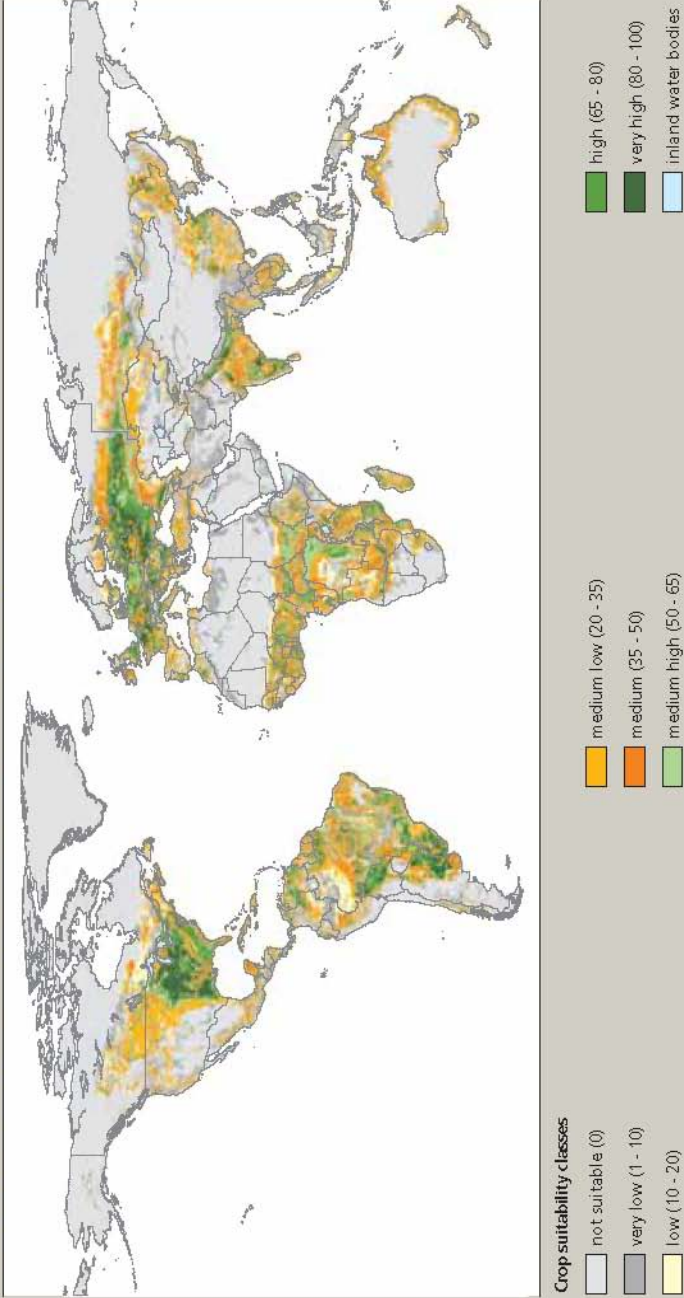


Cereals production maps

MAP 1
Suitability of global lands area for rainfed production of cereals (low level of inputs)

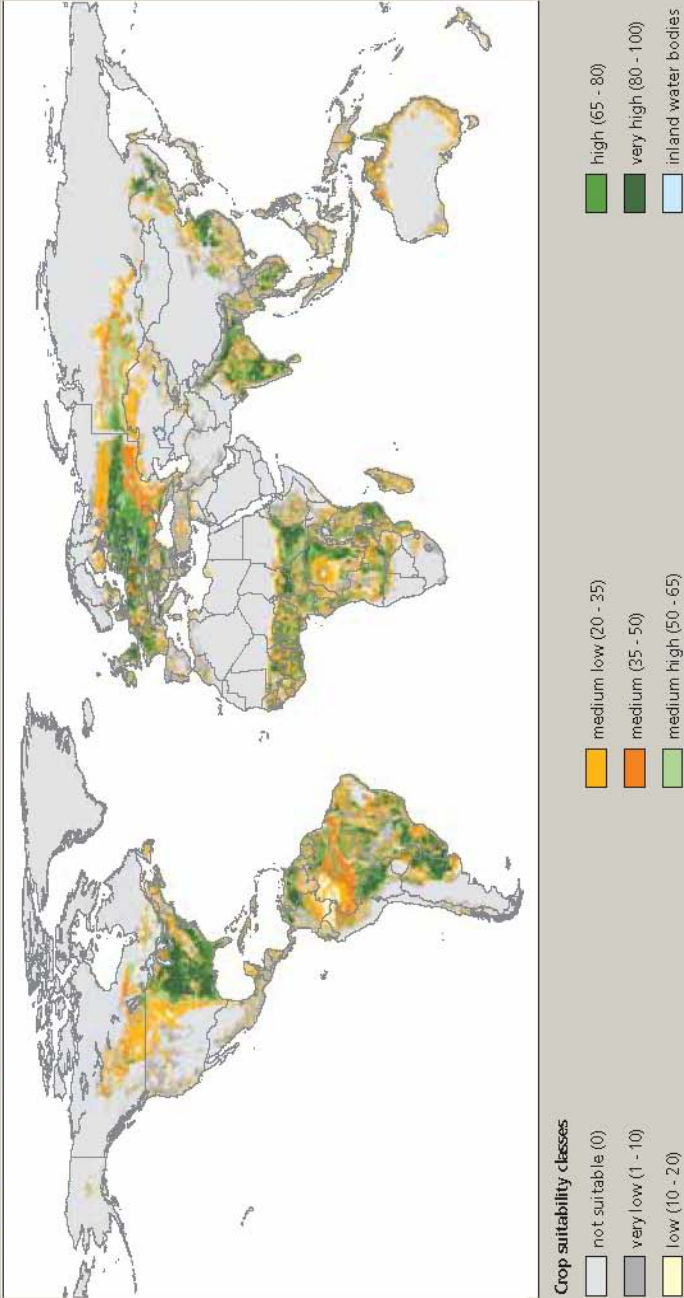


MAP 2
Suitability of global lands area for rainfed production of cereals (intermediate level of inputs)



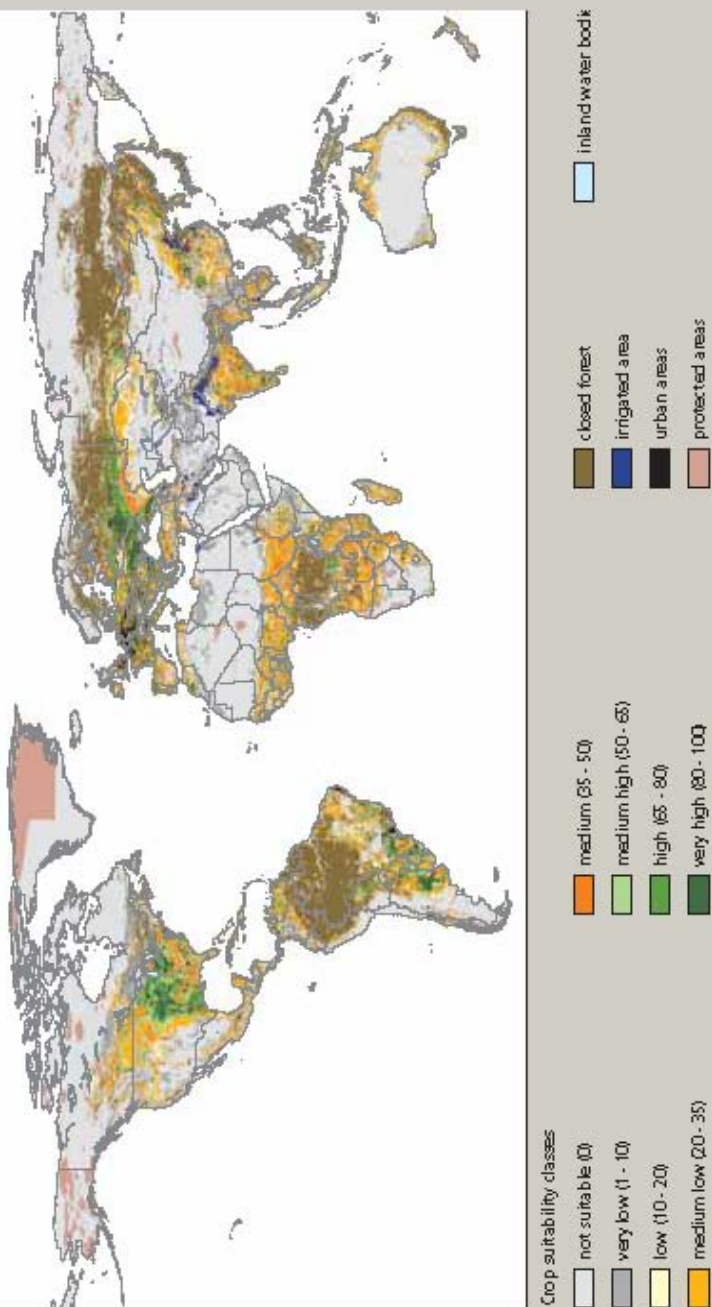
FAO & IIASA, 2007.

MAP 3
Suitability of global lands area for rainfed production of cereals (high level of inputs)

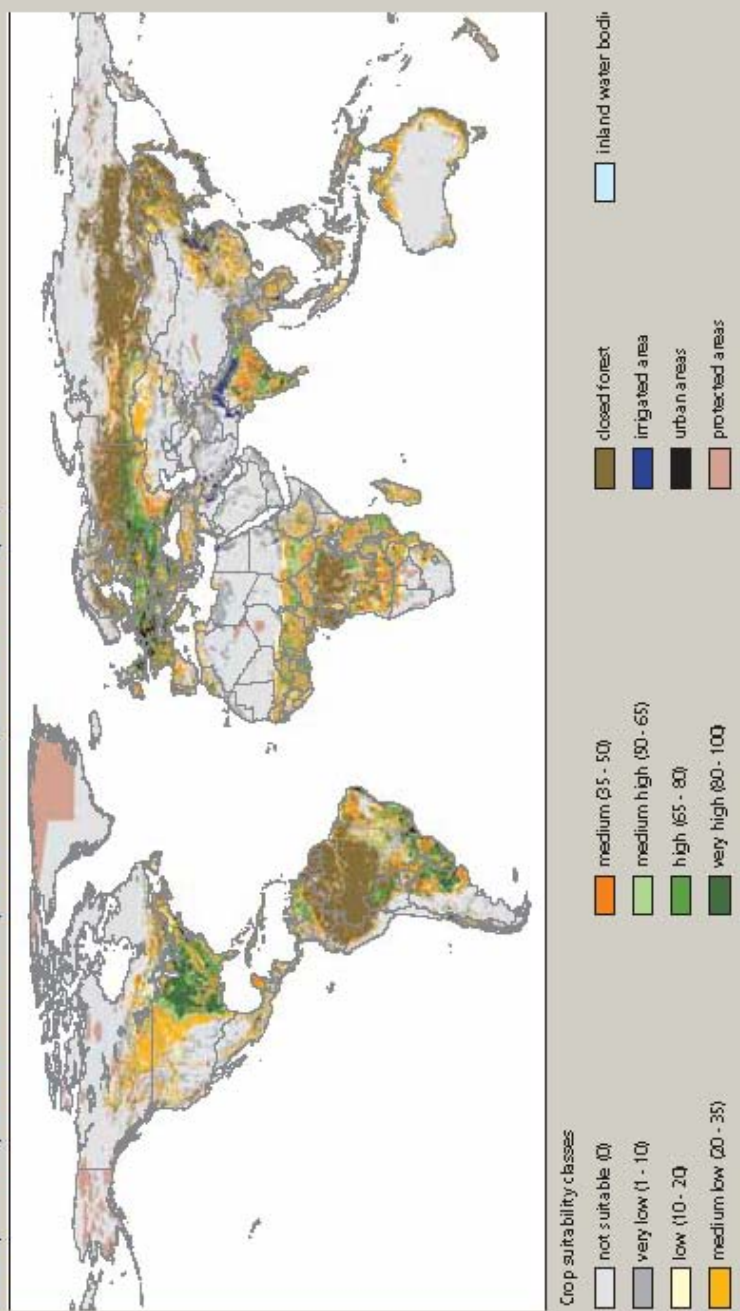


FAO & IASA, 2007.

MAP 4
Suitability of currently available land for rainfed production of cereals (low level of inputs)

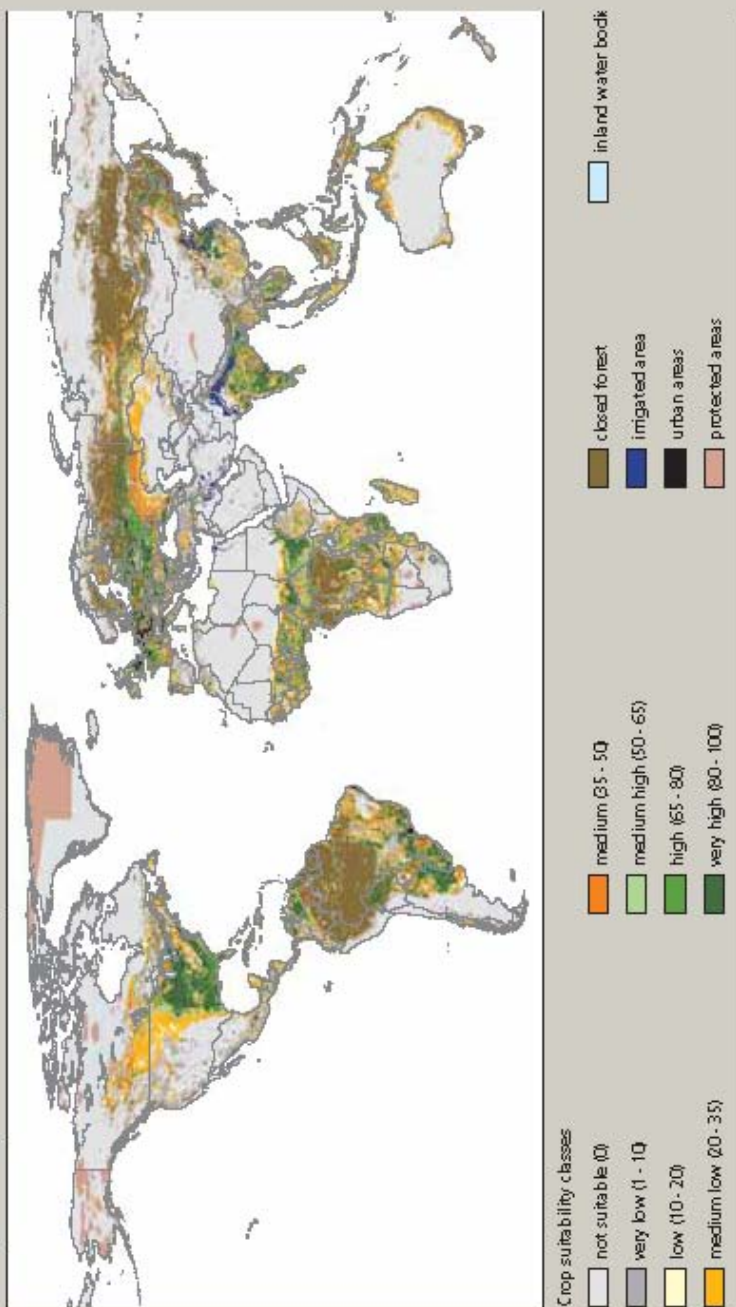


MAP 5
Suitability of currently available land for rainfed production of cereals (intermediate level of inputs)

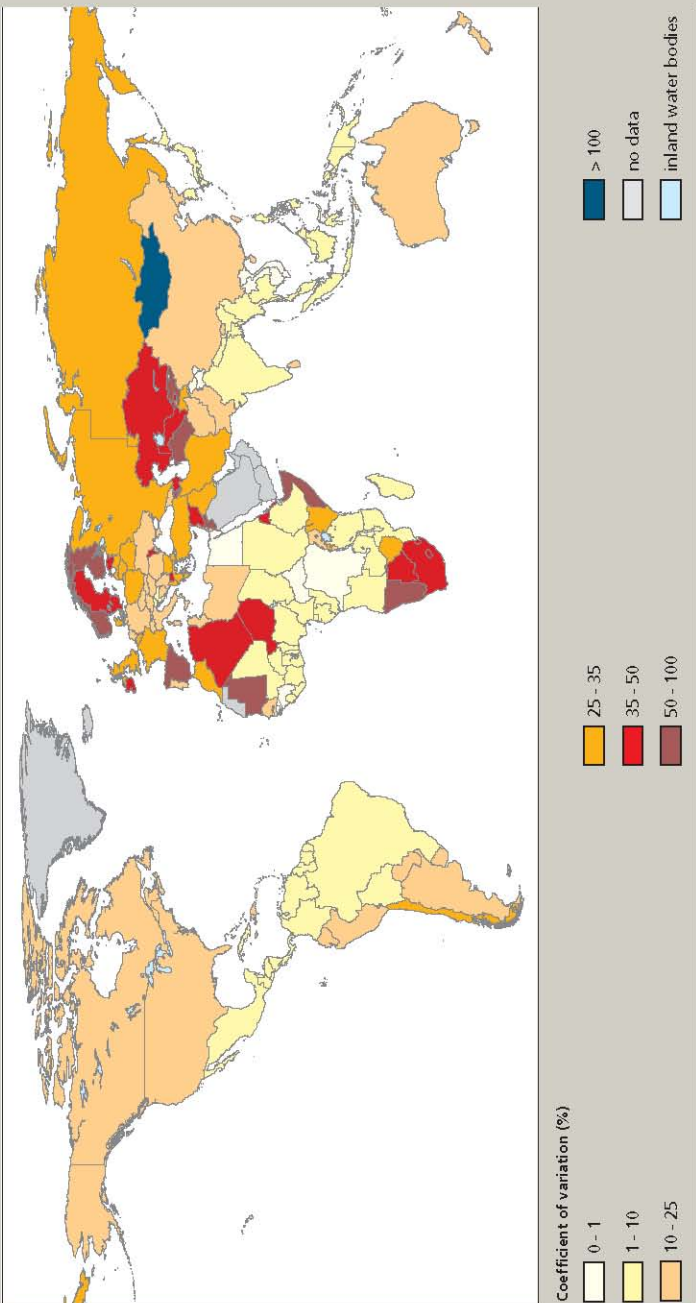


FAO & IASA, 2007

MAP 6
Suitability of currently available land for rainfed production of cereals (high level of inputs)



MAP 7
 Variability of rainfed cereal production potential, by country, 1961–1990



FAO & IIASA, 2007