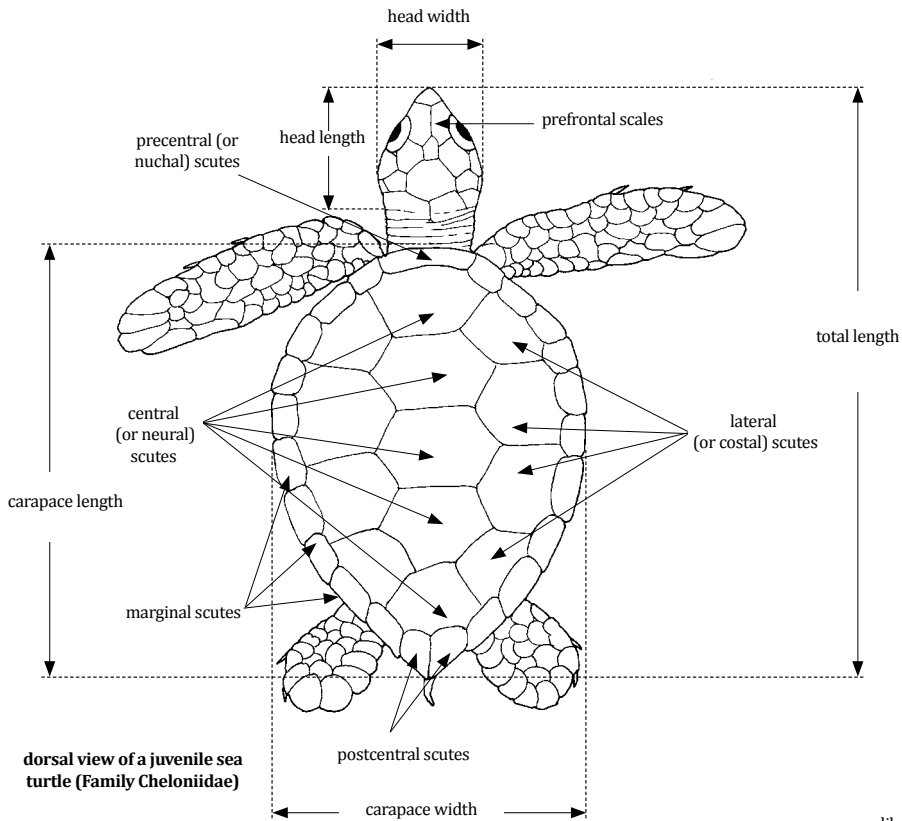
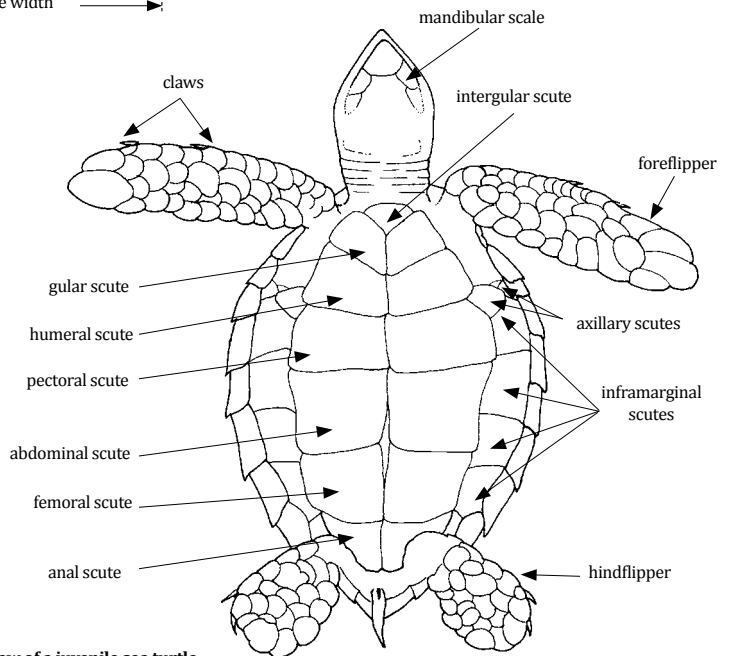


SEA TURTLES

TECHNICAL TERMS AND MEASUREMENTS



dorsal view of a juvenile sea turtle (Family Cheloniidae)



ventral view of a juvenile sea turtle (Family Cheloniidae)

CHELONIIDAE

Caretta caretta (Linnaeus, 1758)

Local name(s): N: Kasa; S: Kasa (M/K).

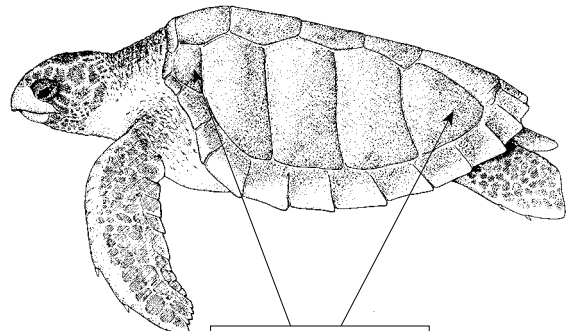
Habitat: Inhabits marine waters and is highly migratory.

Fisheries: By-catch of various fishing gears.

Distinctive Characters: Carapace heart-shaped, depressed; head rather large and very broad, with 2 pairs of prefrontal scutes and a strong horny beak; 3 pairs of enlarged inframarginal scutes on plastron; 2 claws on each flipper.

Colour: Upper side brownish red with light spots; underside pale yellow with diffuse orange spots.

FAO names: Loggerhead turtle (En)
Carouane (Fr)



Five pairs of lateral scutes, anterior pair touching the precentral scute

Size: To 125 cm (CL)

Chelonia mydas (Linnaeus, 1758)

Local name(s): N: Kasa duvi; S: Kasa(M), Kasa ziwa (K).

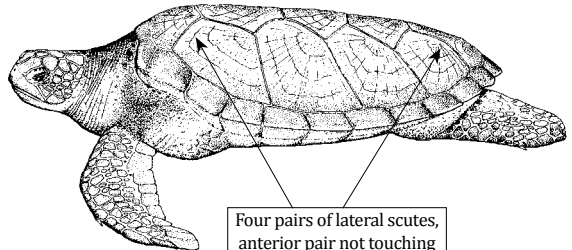
Habitat: Marine seagrass beds; migrates over considerable distances.

Fisheries: By-catch of various fishing gears.

Distinctive Characters: Carapace oval, depressed; head small, with a single pair of prefrontal scutes; edge of lower jaw coarsely toothed, that of upper jaw with strong ridges on inner surface; a single claw on each flipper.

Colour: Upper side dark olive-brown or black; carapace scutes shiny with radiating yellow, green and black spots; underside pale grey or whitish.

FAO names: Green turtle (En)
Tortue verte (Fr)



Four pairs of lateral scutes, anterior pair not touching the precentral scute

Size: To 120 cm (CL)

Eretmochelys imbricata (Linnaeus, 1776)

Local name(s): N: Kasa kingange; S: Kasa (M), Kasa ngamba (K).

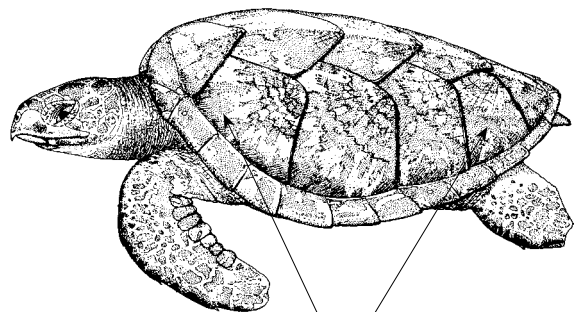
Habitat: Shallow seagrass and algae beds, also on mud or corals.

Fisheries: By-catch of various fishing gears.

Distinctive Characters: Carapace oval, depressed; head medium-sized with 2 pairs of prefrontal scutes and a strong horny beak; scutes on shell overlapping, but in very old specimens they are juxtaposed; 4 pairs of inframarginal scutes on plastron; 2 claws on each flipper.

Colour: Upper side dark-brown, with yellow and reddish streaks on scutes; underside pale yellow.

FAO names: Hawksbill turtle (En)
Tortue caret (Fr)



Four pairs of lateral scutes, anterior pair not touching the precentral scute

Size: To 100 cm (CL)

Lepidochelys olivacea (Eschscholtz, 1829)

Local name(s): N: Kasa gamba/Kasa kingange;
S: Kasa (M/K).

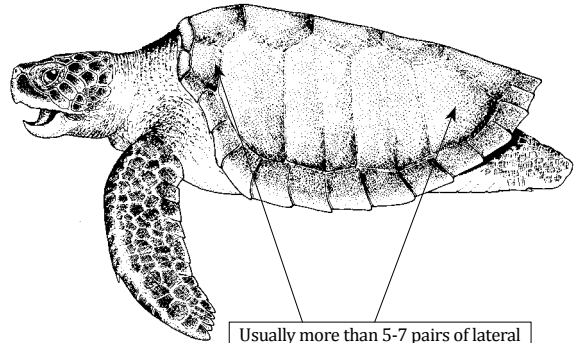
Habitat: Shallow coastal waters and open sea.

Fisheries: By-catch of various fishing gears.

Distinctive Characters: Carapace semi-circular in outline, depressed; head small with 2 pairs of prefrontal scutes and a horny beak which may be finely serrated; 4 pairs of inframarginal scutes, each perforated by a pore toward its hind margin; adults with only 1 visible claw on each flipper.

Colour: Upper side olive brown; underside yellowish-white; dorsal pigmentation of male is more intense than in female.

FAO names: Olive ridley turtle (En)
Tortue olivâtre (Fr)



Usually more than 5-7 pairs of lateral scutes on carapace, anterior pair touching the precentral scute

Size: To 79 cm (CL)

DERMOCHELYIDAE***Dermochelys coriacea*** (Vandelli 1761)

Local name(s): N: Kasa/Kasa ngozi/Kasa Iladhi;
S: Kasa (M), Kasa ngozi (K).

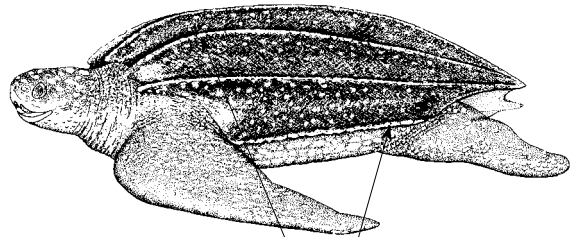
Habitat: Pelagic and migratory.

Fisheries: By-catch of various fishing gears.

Distinctive Characters: Body depressed and covered by a smooth leathery skin lacking lamellae or scutes; head small, ending in a horny beak (beak W-shaped when viewed from the front); flippers very large, without claws.

Colour: Upper side dark brown to almost black; whitish spots on neck, increasing in number on the ventral and caudal areas; underside pink and white.

FAO names: Leatherback turtle (En)
Tortue luth (Fr)



Seven longitudinal ridges (including the outer or lateral pair) on carapace

Size: To 180 cm (CL)

