

Report of the

FIRST ADVISORY GROUP MEETING

Rome, Italy, 17 December 2008



THE EAF-NANSEN PROJECT

FAO started the implementation of the project “Strengthening the Knowledge Base for and Implementing an Ecosystem Approach to Marine Fisheries in Developing Countries (EAF-Nansen GCP/INT/003/NOR)” in December 2006 with funding from the Norwegian Agency for Development Cooperation (Norad). The EAF-Nansen project is a follow-up to earlier projects/programmes in a partnership involving FAO, Norad and the Institute of Marine Research (IMR), Bergen, Norway on assessment and management of marine fishery resources in developing countries. The project works in partnership with governments and also Global Environment Facility (GEF)-supported Large Marine Ecosystem (LME) projects and other projects that have the potential to contribute to some components of the EAF-Nansen project.

The EAF-Nansen project offers an opportunity to coastal countries in sub-Saharan Africa, working in partnership with the project, to receive technical support from FAO for the development of national and regional frameworks for the implementation of ecosystem approach to fisheries management and to acquire additional knowledge on their marine ecosystems for their use in planning and monitoring. The project contributes to building the capacity of national fisheries management administrations in ecological risk assessment methods to identify critical management issues and in the preparation, operationalization and tracking the progress of implementation of fisheries management plans consistent with the ecosystem approach to fisheries.

STRENGTHENING THE KNOWLEDGE BASE FOR
AND IMPLEMENTING AN ECOSYSTEM APPROACH
TO MARINE FISHERIES IN DEVELOPING COUNTRIES
(EAF-NANSEN GCP/INT/003/NOR)

Report of the
FIRST ADVISORY GROUP MEETING

Rome, Italy, 17 December 2008

The designations employed and the presentation of material in this information product do not imply the expression of any opinion whatsoever on the part of the Food and Agriculture Organization of the United Nations (FAO) concerning the legal or development status of any country, territory, city or area or of its authorities, or concerning the delimitation of its frontiers or boundaries. The mention of specific companies or products of manufacturers, whether or not these have been patented, does not imply that these have been endorsed or recommended by FAO in preference to others of a similar nature that are not mentioned.

All rights reserved. Reproduction and dissemination of material in this information product for educational or other non-commercial purposes are authorized without any prior written permission from the copyright holders provided the source is fully acknowledged. Reproduction of material in this information product for resale or other commercial purposes is prohibited without written permission of the copyright holders. Applications for such permission should be addressed to:

Chief
Electronic Publishing Policy and Support Branch
Communication Division
FAO
Viale delle Terme di Caracalla, 00153 Rome, Italy
or by e-mail to:
copyright@fao.org

PREPARATION OF THIS DOCUMENT

The first meeting of the EAF-Nansen project Advisory Group was held at the FAO headquarters in Rome, on 17 December 2008.

The main objectives of the meeting were to introduce the Group to the project, to enable members to assess the progress of work and to give some direction for effective implementation.

This report gives the record of the meeting, the decisions taken and suggestions made for the smooth implementation of the EAF-Nansen project.

This report was prepared by the Project Coordinator Kwame Koranteng. The assistance of FAO staff who made presentations at the meeting and also of Advisory Group members who provided comments on the initial draft is gratefully acknowledged.

FAO EAF-Nansen Project.

Report of the First Advisory Group Meeting. Rome, Italy, 17 December 2008.

FAO EAF-Nansen Project Report. No 3. Rome, FAO. 2009. 22p.

ABSTRACT

The first meeting of the EAF-Nansen project Advisory Group was held at the FAO headquarters in Rome, on 17 December 2008. The meeting was attended by 15 Advisory Group members and observers and was chaired by Dr Kevern Cochrane, Chief of the FAO Fisheries Management and Conservation Service.

The meeting was informed that although the project document does not make provision for an Advisory Group, from internal discussions on the governance structure of the project FAO felt the need for an independent body that would look across the regions and would bring in experiences from outside the project area. Consequently, the Advisory Group was constituted to give direction to the project, to play the role of a global “Steering Committee” to assess the project progress, and to advise the project management on implementation of activities.

The project team made presentations on project activities since inception, the project management structure including the role of the EAF national and regional Task Groups, the ecosystem survey component of the project, communications and training. Also presented were the outcomes of the Survey Planning meeting and Project Forum that had taken place on 15 and 16 December respectively and also the work plan for 2009.

The Advisory Group made a number of recommendations on project implementation and outreach and asked FAO to appraise them from time to time on progress of work.

CONTENTS

	Page
Preparation of this document	iii
Abstract	iv
1. INTRODUCTION	1
2. MEETING OBJECTIVES AND THE EAF-NANSEN PROJECT	1
3. REPORT ON PROJECT ACTIVITIES (SINCE PROJECT INCEPTION)	3
4. PROJECT MANAGEMENT STRUCTURE AND ROLES	4
5. MAINSTREAMING THE WORK OF THE EAF-NANSEN TASK GROUP IN THE AGENDA OF REGIONAL FISHERIES BODIES	6
6. TRAINING AND FELLOWSHIPS	7
7. CONCLUSIONS OF THE 2008 ANNUAL FORUM AND SURVEY PLANNING MEETING	8
7.1 The Annual Forum	8
7.2 Conclusions of the Survey Planning Meeting	10
8. WORK PLAN FOR 2009	10
9. CONCLUSIONS AND RECOMMENDATIONS	11
ANNEXES	
A: List of Participants	13
B: Agenda	15
C: The EAF-Nansen Project Components and Outputs	16
D: Terms of Reference of Regional Task Group	18
E: Terms of Reference of National Task Group	20
F: Costs and Eligibility Criteria for Discounted Rates for the use of the R/V DR. FRIDTJOF NANSEN	22

1. INTRODUCTION

The first meeting of the EAF-Nansen project Advisory Group was held at the FAO Headquarters in Rome, on 17 December 2008. The meeting was attended by 15 Advisory Group members and observers (Annex A) and was chaired by Dr Kevern Cochrane, Chief of the FAO Fisheries Management and Conservation Service. The agenda for the meeting is shown in Annex B.

Opening the meeting Dr Kevern Cochrane, thanked the members of the Group for accepting FAO's invitation to be part of this important body for the EAF-Nansen project. He also thanked them for dedicating two days of their precious time to attend the project Annual Forum (held on the 16 December) and the Advisory Group meeting.

Dr Cochrane told the meeting that the EAF-Nansen project has had a slow start due partly to delays in recruitment of the EAF Coordinator and the non-preparedness of partner projects. He noted though that in spite of the delays, activities with the research vessel DR. FRIDTJOF NANSEN have been satisfactory. He indicated that FAO is looking for advice on how best to move the project forward in order to meet the expectations of the member countries on the EAF. In so doing, however, it is important to ensure that the advice given by the Advisory Group does not counteract the proposals by member countries. This is because FAO also insists on ownership of projects by the participating member countries.

2. MEETING OBJECTIVES AND THE EAF-NANSEN PROJECT

Dr Kwame Koranteng, the EAF-Nansen Project Coordinator presented the objectives of the Advisory Group meeting. He made a brief mention of the six outputs of the project (Annex C) covering EAF policy and management, ecosystems assessment and monitoring, capacity building, support to regional research vessels and project management. He said that under institutional arrangement for the project, there is provision for a Regional Steering Committee for each of the four operational areas of the project, namely the Canary Current LME area, the Guinea Current LME area, the Benguela Current LME area and the Agulhas and Somali Currents LME area.

He said that the project document does not make provision for an Advisory Group or any group of this nature. However, from internal discussions on the governance structure of the project, FAO felt the need for an independent advisory group that would look across the regions and would bring in experiences from outside the project area. Consequently, this Advisory Group was constituted to give independent direction to the project, to play the role of a global "Steering Committee" to assess the project progress, and to advise the project management to ensure effective implementation of the project.

The EAF Coordinator ended by saying that the members of the Advisory Group were carefully selected to include scientists vexed in the development of the EAF concept, EAF practitioners, an EAF Regional Task Group chairman, the chairman of Scientific Committee of one Regional Fisheries Body in the project area and the Chairman and Secretary of CECAF (Fisheries Committee for the Eastern Central Atlantic) and SWIOFC (South West Indian Ocean Fisheries Commission) (The list is given in Annex A).

The presentation on the EAF-Nansen project was very brief, dwelling mainly on the operational aspects since the outputs and activities had been presented at the Forum held a day earlier and which was attended by all Advisory Group members. The Terms of Reference of the EAF National and Regional Task Groups were presented for comments.

In the discussions that followed the opening of the meeting and the presentation of the EAF-Nansen project and meeting objectives, the Advisory Group members asked questions and made comments on a number of issues. For example, the Group wanted to understand the link between the project and the GEF-funded LME projects in Africa and the involvement of subregional fishery bodies (RFBs) in the project's activities. The crux of the discussion was that the project needs to have a strong interface with the RFBs and the latter need to feel that the project is working for their members. It was also felt that since the project has fisheries management aspirations, there should be a closer link between it and already existing management structures. It was noted that in the SWIOFC area, for example, where there appears to be saturation of projects but with low human capacity, this close collaboration is essential.

Some AG members felt that the objectives of the project were too broad and there is, therefore, the need to be more focused. They also cautioned against "over-selling" the project thereby raising unrealistic and non-achievable expectations on the part of partners and beneficiaries. Some felt that pressing issues like over-capacity in fisheries were not addressed in the project. There were concerns also that the project objectives may not be easy to translate into indicators and reference points. Some members felt, however, that the consultative approach envisaged in the project is what is needed for fisheries management in Africa. It was noted that usually fisheries managers wait for a problem to occur before they take actions to address it and often times without consulting the stakeholders. The EAF approach gives managers the opportunity and need to have consultation with stakeholders, especially the fishers. It was noted that the ecosystem approach to fisheries implies putting in place good governance and this could be put down as one of the objectives of the project.

Responding, Dr Cochrane noted that the partners were clear on what they wanted from the project. He noted that it is true that the project is over-ambitious but this is also deliberate. He added that the project is to make countries aware of what is possible for them to set clearer operational objectives including helping them (the countries) to identify management issues and setting the agenda to address the issues. It was also remarked that much as FAO does not want to disagree with some of the observations and comments of the Advisory Group, the project objectives are not as vague as they appear to be. It was agreed that similar national programmes like hake survey of Namibia and hake survey of South Africa, for example, could be harmonized under the project.

Dr Hamukuaya of the Benguela Current Commission (BCC) recalled the contribution that the DR. FRIDTJOF NANSEN surveys are making towards the management of sardine, sardinella and hake resources in the Benguela Current area. He noted that the surveys offer the most reliable source of information for assessments of these transboundary resources. He said that the BCC is operating under an interim agreement with the hope of putting in place a permanent agreement by 2012 but there is no binding treaty yet. The intention, he said is for the Commission to have a mandate similar to that of SEAFO (South East Atlantic Fisheries Organization) but he did not believe that this can be achieved in five years.

The Secretary of SWIOFC, Mr Aubrey Harris, also informed the AG that SWIOFC is a young advisory commission set up three years ago by the member countries. Its Scientific

Committee assesses the status of the fisheries but there is no forum for elaboration of management measures. He noted that the Commission has a light structure but is driven by the countries. Projects in the region enjoy special relationships with the Commission. For example, the GEF-assisted South West Indian Ocean Fisheries project is placed under the Commission and the latter serves as the Steering Committee for the project. He remarked that the Commission would be happy to see a similar arrangement under the EAF-Nansen project.

The issue of transmission of the project document to national authorities with the TOR of the task groups was raised. Members felt that some clarification has to be sent to the Fisheries Directors concerning the nature, mandate and functions of the NTG. It was also suggested that the designation to the NTG be made clearer and that separate TORs be prepared for the Chair of the task groups. At the regional level, the Advisory Group was informed that the plan is to get the RTG mainstreamed in the work of the Scientific Committee of the relevant RFB.

3. REPORT ON PROJECT ACTIVITIES (SINCE PROJECT INCEPTION)

Merete Tandstad of FAO made a presentation on the activities that have been undertaken since the inception of the project in December 2006. The presentation followed the project components and outputs as shown in Annex C.

Under outputs 1 and 2, Merete said that three regional EAF familiarization workshops have been organized (Accra, October 2007; Durban, June 2008; and Casablanca, July 2008) with the following objectives:

- Introduce participants to concepts and principles relevant to the implementation of an ecosystem approach to fisheries management
- Present to the partners the EAF-Nansen project, its scope and objectives and to identify overall activities to be carried out with the view to facilitating key processes and activities for the implementation of the ecosystem approach to fisheries in the region.

It was noted that participants of the workshops have been introduced to the ecological risk assessment methodology which includes issue identification and prioritization - the necessary inputs for the preparation of fisheries management plans - and also the concept and preparation of the EAF-Baseline (also called TROM) reports.

A desk study on available instruments relevant to EAF in Africa including case studies is being undertaken in collaboration with the Development Law Service (LEGN) of FAO. The objective of the study is to guide the development or amendment of country legislation relating to EAF and enable the EAF-Nansen project to assist countries to incorporate the EAF concept in relevant national legislations.

Under output 3, seventeen surveys with a total of 555 survey days were carried out in 2007 and 2008 in collaboration with the BENEFIT programme, the GEF-assisted LME projects and other partners. Over 250 national scientists participated in these surveys many of them as trainees. The results of the surveys have been documented in the cruise reports produced by the IMR Cruise Leaders assisted by the local scientists who participated in the surveys. Ms Tandstad said that in connection with these, post-survey meetings have been organized at which results of the surveys were presented to national authorities (managers, scientists and politicians). In addition, one (1) survey data analysis workshop was organised in Accra, Ghana for scientists in the GCLME area. She said that similar workshops have been planned for the other areas in 2009.

An Expert Meeting for the development of GIS activities in the EAF-Nansen project was held in Rome, from 30 September to 2 October 2008. The purpose of the meeting was to establish the state of the art in the use of GIS in order to assess its potential as a key tool for facilitating implementation of the EAF. The meeting formed the basis for exploring and creating opportunities to develop an information system where biological and oceanographic data collected by the EAF-Nansen project can be stored, managed and visualized.

Under outputs 4 and 5, Ms Tandstad reported that the project has supported a number of stock assessment workshops and Working Group meetings mainly in the CECAF area. These workshops have helped establish and monitor the status of pelagic and demersal resources in some parts of the project area. Data from collected on R/V DR. FRIDTJOF NANSEN surveys were used together with those obtained from the use of national research vessels of the region. Under these outputs, the project has also assisted the countries in Northwest Africa to carry out inter-calibration of acoustic equipment for coordinated regional surveys and also in the analysis of the data for management purposes.

Ms Tandstad said that even though the capacity building component of the project is still under development, many of the activities include on the job training and cited the surveys as an example. She also mentioned the support that the project has provided to 1 scientist to attend an international symposium on climate change (Rome, July 2008) and 2 managers to attend a training workshop on Ecosystem Approaches to Coastal and Ocean Management (Mombasa, October 2008). She informed the Advisory group that the project is exploring possible formal training options e.g. with Wageningen University of the Netherlands. A Trainers' workshop has been planned for February 2009.

On project planning, dissemination and communication (output 6) Ms Tandstad talked about the Annual tripartite (FAO, Norad, IMR) meetings and the Project Forum the first of which was held on 16 December 2008. She said that the regional steering committees will be re-constituted in 2009 to be followed by their meetings as prescribed in the project document. Under the same output, a Communication Strategy and a project website are being developed. The goal of the communication strategy is "to market the EAF-Nansen project as widely as possible to ensure that all intended beneficiaries and stakeholders understand the project, its objectives and expected outcomes". It is expected that the strategy and website will be finalised in the first quarter of 2009. Ms Tandstad said that the EAF Coordinator, IMR Science Coordinator, and other FIMF staff have participated in several international meetings with the aim of promoting the project and to create synergies with other activities and projects in Africa.

The AG members commended FAO and IMR for the work done, some describing it as impressive, especially the part with the research vessel. However, there was a remark that the link between the two parts of the project – EAF management and the R/V DR. FRIDTJOF NANSEN surveys – is not very clear. A member pointed out that the GIS work should be made to create the link. For example, the results of the risk analysis work should help define the objectives of the ecosystem surveys, except in the case of the work brought forward from the old Nansen Programme (e.g. surveys in Angola). It was noted that the main idea of the GIS component should not be to develop a tool but to train national experts on use of GIS (i.e. the application).

A member remarked that the R/V DR. FRIDTJOF NANSEN survey work has had positive impact on the Canary Current area, especially in capacity building for fisheries research. The results of the surveys have been used by working groups on resources in the sub-region. At

this, a comment was made that in the North Atlantic area, results of such surveys would be communicated initially to ICES and that a mechanism should be found to do something similar in the project area. One way is to produce a management paper after the surveys but IMR pointed out that each survey report has a section on management considerations and the results are available to the relevant Working Groups of the Regional Fishery Bodies in the area.

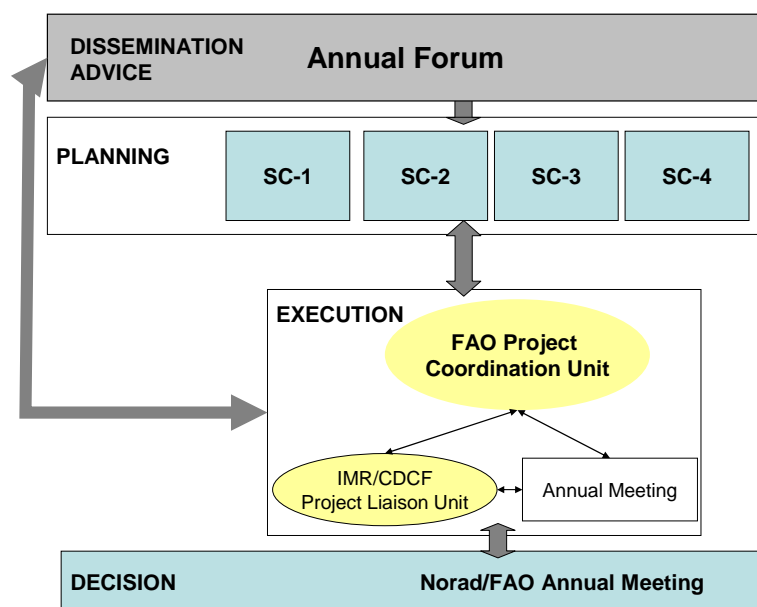
It was suggested that the project should have a policy on announcement of survey results since this would also serve as a public relation tool for the project. It was agreed that there is value in putting out a summary of the results after each survey but it should be clearly stated that “ ..these are survey results and not full assessment of the resources..”. In addition, national sensitivities should not be overlooked.

There was a comment that the legal study is not operational enough and that what is needed is coming up with a blueprint strategy on what is legally required by a fishery manager in order to implement EAF. It would be useful to prepare an inventory of environmental and other laws that are relevant to EAF and also documentation on best practices. It would also be good to have guidelines on how to formulate a fisheries policy in line with EAF.

Another comment was on what appears to be inadequate work on social science aspect of EAF. For this, the Advisory Group was informed that FAO-FIEP is doing a lot of work on these issues outside of, but in collaboration with, the EAF-Nansen project.

4. PROJECT MANAGEMENT STRUCTURE AND ROLES

The Project Coordinator introduced this agenda item. He said that under institutional arrangement for the project, there is provision for a regional steering committee for each of the four operational areas (CCLME, GCLME, BCLME and ASCLME) of the project and an Annual Forum. The project management structure in the project document is shown in the figure below.



Each regional Steering Committee is to have representatives of fisheries research and management institutions in the partner countries in the region, as well as IMR, FAO and representatives of the relevant LME Programmes and other partner programmes/ projects operating in the area. The regional Steering Committee is responsible for assessing the project progress and formulating recommendations to the project management regarding requirements, priorities and work-plans for project implementation in the respective region. From the discussions on the objectives of the Advisory Group meeting, it was clarified that setting up the Advisory Group should not affect the role of the regional steering committees.

The Annual Forum which was inherited from the old Nansen Programme is to meet once a year. Participants should be from partner projects and countries. The Forum is for progress reporting, dissemination of experiences, identification of best practices and discussion of strategies. A good theme should be chosen and the Forum should preferably be held in Africa.

Participants were asked for their views on the Advisory Group itself including its size and composition. The members were unanimous in their view on the usefulness of having a group that is not related to the project and were also satisfied with the composition and size. There was a question of how to evaluate the performance of the Group but there was no general consensus on this. Whereas some felt that we need indicators to measure the progress of the Group others did not see the real need for this formal assessment.

It was agreed that the involvement of managers (e.g. Directors of Fisheries) in the regional Steering Committees would be advantageous for the project. The AG was informed of the decision by the Scientific Committee of SWIOFC to consider the Commission as the core of the regional Steering Committee to which will be added representatives of partner projects as necessary. CEEFAC has also agreed to adopt this model. It was noted that the BCC may have a different need and model because of the nature of its management board. However, there is the possibility of adopting the management board as the regional Steering Committee of the EAF-Nansen project.

5. MAINSTREAMING THE WORK OF THE EAF-NANSEN TASK GROUP IN THE AGENDA OF REGIONAL FISHERIES BODIES

An EAF Regional Task Group (RTG) is to be established in each of the four operational regions of the EAF-Nansen project. Each RTG will be composed of 1 member (who will have an alternate) from each country. The RTGs will also have representatives from relevant regional projects and Sub-regional Fisheries Commissions/Committees where applicable. The RTG will be a forum for learning and exchange of ideas and advice in relation to EAF in a given region. The detailed Terms of Reference of the RTG is provided in Annex D.

The Advisory Group noted that the success of the project, especially at the national level, will be assured if the implementation structure, i.e. the National Task Group (NTG), is anchored within the national fisheries management agency (e.g. the Fisheries Department). There were two schools of thought on the TOR of the NTG (Annex E). Whereas some members noted that the TOR of the NTGs almost capture the mandate of the Fisheries Department others felt that if the agenda of the NTG is to be nationally driven then the TOR looks fine. It was suggested that the NTG be made to assist in implementation of the project and not be totally responsible for it since EAF is a fisheries management issue that the Fisheries Department is responsible for. There was a remark, however, that making the NTG stay closer to the

fisheries administration without getting it totally buried in it will be a real challenge in some countries and that the interface may not be the same in all countries.

The Advisory Group was informed that the SWIOFC Scientific Committee has also agreed to adopt the EAF Regional Task Group in the ASCLME area as a working group under the Committee. This means that the RTG is expected to present the results of its work to the Scientific Committee for discussion and included in the Committee's report to the Commission. The Group was also informed that CECAF has also accepted this kind of arrangement although its Scientific Committee has not had the opportunity to discuss the modalities.

6. TRAINING AND FELLOWSHIPS

The Advisory Group was informed that the capacity building component of the project is still not fully developed. One reason is the proposed training activities with partner projects that are also just about putting their training components in order. Nevertheless, as noted above, training and capacity building have been undertaken with activities conducted under other outputs of the project and also through on the job training during the R/V DR. FRIDTJOF NANSEN surveys. Many of the participants of the workshops/meetings organized so far are personnel of fishery research institutes and fisheries administrations in the project area.

There were extensive discussions on training and general capacity building. The project was asked to distinguish between short-term and longer-term courses and training programmes. For practical courses, the AG felt that academic institutions would not be the best place; attachments to certain institutions and projects may be the answer. For example there is a facility in Morocco for short term practical courses in GIS. It was suggested that the RTG members be trained in meeting facilitation.

Long-term courses, especially in overseas institutions, carry a greater risk of participants not returning home after the training. The project could consider sandwich courses organized and run with institutions in Africa. The issue of syllabus/course content has to be discussed and addressed. There was a suggestion that the project looks at the possibilities offered by GEF IW-Learn. There was also a suggestion that the project also needs to think about longer-term capacity building plan and was advised to contact the United Nations University (UNU) for possible collaboration in this. Another suggestion is for the EAF-Nansen project to initiate the development of "public good" of institutions and projects which could provide training and practical courses on certain specific aspects of the EAF.

The EAF Project Coordinator indicated that the issue of training has been discussed with some of the project partners. It was suggested that the proposed training needs assessment be done in collaboration with the partner projects, e.g. ASCLME and SWIOFP, in the case of the ASCLME area. The AG was informed that the Benguela Current Commission has already carried out a training needs assessment and is in the process of recruiting a training officer to coordinate the proposed training.

AG members reminded FAO that the EAF-Nansen project should not be expected to fill the vacuum for all kinds of fisheries training as is perhaps perceived by the participating countries.

7. CONCLUSIONS OF THE 2008 ANNUAL FORUM AND SURVEY PLANNING MEETING

7.1 The Annual Forum

The EAF-Nansen Coordinator presented the conclusions of the first Annual Forum held on 16 December 2008. He said that the Forum was attended by 35 participants made up of national experts, representatives of partner projects, IMR and FAO. The keynote presentation was on “Ecosystem Approach to Fisheries – Global Perspective and Applicability in Africa”. Four case studies were presented (namely management plan for shrimp fishery in Mozambique; EAF activities in BENEFIT-BCC, lessons from Australia and lessons from Norway). Other presentations were on legal study to guide the development or amendment of country legislation relating to EAF, ecosystem surveys undertaken within the project, GIS for EAF and development of a communication strategy for the project.

The summary of the discussions and recommendations are presented below.

I. The Keynote Presentation

It was noted that conservation and management decisions should be based on the best available knowledge. It was said that the use of generic trees as an analytical tool in ecosystem approach to fisheries management enhances consistency of the approach, makes sure that all important features are considered, minimizes ‘missing issues’ at first pass, and gives good visual description of issues.

There was a call for a need for change in fisheries management that involves:

- Improving human well-being and equity,
- Applying the precautionary approach
- Developing adaptive management systems
- Ensuring compatibility of management measures (across jurisdictions)
- Broadening stakeholder participation
- Using incentives
- Promoting sectoral integration
- Improve research to better understand ecosystems in all its components

II. Legal

- The policy change required to implement EAF depends on how ambitious one wants to be; much can be achieved through amending existing laws or through addendums but for countries with conflicting sectoral policies comprehensive reforms may be necessary
- The EAF-Nansen Project needs to find out which countries are contemplating or undertaking policy/legislation changes and engage with them
- Countries to look at environment laws that can be adapted and used for EAF
- Fisheries Departments could partner with environment departments to change environment laws as necessary (this may be an easier option)
- Use regional/international instruments to advocate for change in national legislation.

III. Case Studies

a. Mozambique

- The negative impact of industrial shrimping on biodiversity is being addressed and the use of Turtle Excluder Device (TED) in shrimp trawls will be mandatory from 2009.
- The EAF-Nansen project has started discussions with the Mozambican authorities on finalisation of the shrimp fishery management plan and the development of other management plans.

b. BENEFIT/BCC

- The mandate of the Benguela Current Commission includes making recommendations to governments on ecosystem-based management,
- GEF has agreed in principle to fund implementation of the SAP which includes assisting with realignment of policy, legislation and management procedures in support of a more transboundary ecosystem approach to fisheries (EAF)

c. Australia

- Australia embarked on ecologically sustainable development (ESD) in all sectors of Government in the early 1990s,
- Ecological Risk Assessment has been carried out for 31 Commonwealth managed fisheries to inform management;
- The Ecological Risk Assessment methodology used by FAO has been adapted from the work done in Australia

d. Norway

- Between 1975 and 2008 management objectives were changed from placing emphasis on single species to ecosystem-based,
- The philosophy changed from “maximizing short term yield of individual stocks, without an immediate high risk of stock depletion to optimizing the long term economic yield of important stocks and at the same time protecting biodiversity, vulnerable habitats and the functioning of ecosystems”.
- It took nearly thirty (30) years for managers and politicians in Norway to identify the problem and its solution.

IV. GIS for EAF

- GIS could support the various steps of the EAF implementation cycle
- The data collected in EAF-Nansen project activities, especially the ecosystem surveys, could present great opportunities as the basis for good case studies to explore the potential use of GIS and spatial analysis in support of EAF.

V. Communications

- Communication strategy to be finalised; including Action Plan for implementation
- The strategy should also address bottom-up line of communication (especially from the stakeholders)

The Advisory Group members commended the project for the Forum but noted that 1 day was not enough for the intended purpose of the forum; 2-3 days should be considered for future Forums.

7.2 Conclusions of the Survey Planning Meeting

Dr Tore Stromme presented the 2009 survey plan and the major outcomes of the Survey Planning Meeting held in Rome on 15 December 2009. He said that the partners for 2009 are the Benguela Current Commission (BCC), Government of Angola, the ASCLME project, the SWIOFP and IUCN and that in addition to the fisheries resources and ecosystem surveys, two marine environment monitoring surveys have been requested by Ghana and Angola to be funded by the “oil-for-development” programme supported by the Norwegian Ministry of Foreign Affairs. He said that the 2009 vessel plan has a total of 309 vessel days including steaming time, which is far above the average target for a normal year of around 290 survey days. The requests received totalled 386 vessel days but after long discussions at the Survey Planning Meeting a compromise was found among the partners, IMR and the EAF-Nansen project. Thus, for the first time in many years, the vessel is over-booked for 2009 to the extent that some requests for vessel time could not be honoured.

Dr Stromme provided the meeting with an indicative requests for vessel time for 2010 and 2011 which were of the order of 310 vessel days each year for surveys in Africa alone and not taking into consideration requests from outside Africa (e.g. Pakistan, Oman, etc.).

Merete Tandstad and Kyriakos Kourkouliotis presented the eligibility criteria for the use of the R/V DR. FRIDTJOF NANSEN, including the qualification for discounted rates (Annex F). The financial difficulties experienced by IMR in meeting the vessel operating costs were brought to the attention of the Advisory Group. This is due mainly to the depreciation of the USD against the Norwegian Kroner.

The AG members noted the progress made and expressed the hope that the vessel will be able to give uninterrupted service in spite of its age. They also wanted to know to what extent the surveys are really ecosystemic in nature. There was also concern about work to be done in Kenyan waters because of the proximity to Somali waters where pirate activities are on the ascendancy. There was a suggestion to approach the government of Kenya for security cover when the vessel is operating close to the border with Somalia.

On the costs of the surveys, the AG was informed that over 60 percent of the budget for the surveys for the five-year period has been used up in two years because of the rising cost of fuel. They were also informed that the partners had expressed their inability to contribute more than the prescribed USD 10,000 per day of use because of budgetary constraints. The Advisory Group noted that the way out would be to ask Norad for replenishment.

8. WORK PLAN FOR 2009

AG members were asked to send feedback to the project management on the draft WP circulated before the meeting. Some comments were made all the same. There was an observation that work to be carried out at country level and facilitated by the National Task Groups is not well captured in the WP. The project was asked to explore the possibility of using unutilized monies earmarked for capacity building for in-country activities and to approach Norad for the necessary permission to use the funds.

There was a suggestion to include in the WP the collection of basic fishery statistics.

The project was asked to invite Mozambique to the planned expert meeting on indicators for EAF since the country has already initiated some work on this.

There was a suggestion that the project considers mounting special exhibitions in different places. One example is to plan to participate in the oil and gas exhibition that the Government of Ghana will be holding in May 2009 since the project has been asked to carry out pre-drilling environmental baseline study.

9. CONCLUSIONS AND RECOMMENDATIONS

At the end of the meeting, Dr Kevern Cochrane expressed FAO's satisfaction at what had been achieved and thanked the participants for their enthusiasm and good advice. The AG members asked FAO to appraise them from time to time on progress of implementation.

The Recommendations made by the Advisors are summarised below.

1. Project needs to develop a strong interface with Regional Fisheries Bodies and the latter have to feel that the project is working for their members.
2. Members felt that some clarification had to be sent to the Fisheries Directors concerning the nature, mandate and functions of the EAF National Task Group (NTG) vis-à-vis those of the Fisheries Department. It was also suggested that the criteria for designation persons to the NTG be made clearer and that there is need to prepare separate TORs for the Chair of the group.
3. There was a remark that making the NTG stay close to the fisheries administration without getting it totally buried in it will be a real challenge in some countries and that the interface may not be the same in all countries.
4. It was recommended that the work to be carried out by the NTGs be captured in the project work plan.
5. It was suggested that Regional Task Group members be trained in meeting facilitation.
6. A member pointed out that the GIS work should be made to create the link between the two components of the project namely the work on EAF management and the ecosystem surveys. For example, the results of the ecological risk analysis work should help define the objectives of the ecosystem surveys.
7. The project should have a policy on announcement of survey results since this would also serve as a public relation tool for the project. It was agreed that there is value in putting out a summary of the results after each survey but it should be clearly stated that those are survey results and not full assessment of the resources.
8. The Group noted that it would be useful to come up with a blueprint strategy on what is legally required by a fishery manager in order to implement EAF. It would be useful to prepare an inventory of environmental and other laws that are relevant to EAF and also documentation on best practices. It would also be good for the project to come up with guidelines on how to formulate a fisheries policy in line with EAF.
9. The inadequacy of work on social science aspect of EAF was brought to the attention of FAO.
10. AG members reminded FAO that the EAF-Nansen project should not be expected to fill the vacuum for all kinds of fisheries training as is perhaps perceived by the participating countries.

11. The project was asked to distinguish between short- and long-term training. It was noted that for practical, short-term courses academic institutions would not be the best place; attachments to certain institutions and projects may be the answer. For long-term courses the project could consider sandwich programmes organized and run with institutions in Africa; the issue of syllabus/course content has to be discussed and agreed with the institution.
12. The project also needs to think about longer-term capacity building plan and was advised to contact the United Nations University (UNU) for possible collaboration in this. There was a suggestion that the project could also look at the possibilities offered by the GEF IW-Learn programme.
13. The project was asked to prepare a list of institutions and projects which could provide training and practical courses on specific aspects of EAF.
14. On the costs of the surveys, the Advisory Group noted that the way out would be to ask Norad for replenishment or additional funds.
15. The project was encouraged to be represented in forums and exhibitions related to EAF to showcase its activities towards the implementation of the ecosystem approach to fisheries in Africa.
16. The Advisory Group members commended the project for the Forum but noted that 1 day was not enough for its intended purpose; 2-3 days should be considered for future Forums.

Annex A: List of participants

Bencherifi, Salah
 Chef, Département des ressources
 halieutiques
 Institut national de recherches halieutiques
 (INRH)
 Casablanca
 Tel.: +212 (0)22 22 02 45
 Fax: +212 (0)22 26 88 57
 Mobile: +212 61 22 28 44
 Email: benchrifi@inrh.org.ma
 bencherifis@yahoo.fr

Bianchi, Gabriella
 Fisheries Management & Conservation
 Service
 Fisheries & Aquaculture Department
 FAO
 Via delle Terme di Caracalla
 Rome 00153
 Tel: +39 06570 53094
 Email: Gabriella.Bianchi@fao.org

Bjordal, Asmund
 Director,
 Centre for Development Cooperation in the
 Fisheries
 Institute of Marine Research
 Bergen, Norway
 Email: aasmund.bjordal@imr.no

Cochrane, Kevern
 Fisheries Management & Conservation
 Service
 Fisheries & Aquaculture Department
 FAO
 Via delle Terme di Caracalla
 Rome 00153
 Tel: +39 06570 56109
 Email: Kevern.Cochrane@fao.org

De Angelis, Nicoletta
 Fisheries Management & Conservation
 Service
 Fisheries & Aquaculture Department
 FAO
 Viale delle Terme di Caracalla
 Rome 00153
 Tel: +39 06570 56759
 Email: Nicoletta.DeAngelis@fao.org

Garcia, Serge
 Via Perdasdefogu, 14
 00050 Aranova (Roma)
 Tel: +39 06 61705228
 Mobile: +39 3348531223
 Email: garcia.sergemichel@gmail.com

Gullestad, Peter
 Senior Adviser
 Resource Management Department
 Directorate of Fisheries
 Bergen, Norway
 Email: pegul@fiskeridir.no

Gumy, Angel
 Development and Planning Service
 Fisheries & Aquaculture Department
 FAO
 Via delle Terme di Caracalla
 Rome 00153
 Tel : (390) 65-7056171
 Email: angel.gumy@fao.org

Hamukuaya, Hashali
 Executive Secretary
 Benguela Current Commission
 Feld Street No. 47
 Windhoek, Namibia
 Tel: +264-61-246948
 Email: hashali@benguelacc.org

Harris, Aubrey
 FAO Subregional Office for Southern
 Africa
 PO Box 3730
 Harare, Zimbabwe
 Tel: (263 4) 253655, 253657
 Fax: (263 4) 700724, 703497
 Email: aubrey.harris@fao.org

Koranteng, Kwame
 Fisheries Management & Conservation
 Service (FIMF)
 Food & Agriculture Organization of the
 United Nations
 Viale delle Terme di Caracalla
 00153 Rome, Italy
 Tel (+39) 0657056007
 Fax (+39) 0657053020
 Email: Kwame.Koranteng@fao.org

Kourkouliotis, Kyriakos
 Fisheries Management & Conservation
 Service (FIMF)
 Food & Agriculture Organization of the
 United Nations
 Viale delle Terme di Caracalla
 00153 Rome, Italy
 Tel (+39) 0657053715
 Fax (+39) 0657053020
 Email: Kyriakos.Kourkouliotis@fao.org

Ngoande, Salvador
 Sous-directeur de la Pêche Industrielle et
 Artisanale
 Ministère de l'élevage, des pêches et des
 Industries Animales
 Direction des pêches et de l'aquaculture
 Yaoundé
 Tel: +237 22316049
 Mob: +237 9999 04 72
 Fax: +237 22223048
 Email: sango_cam@yahoo.fr

Stromme, Tore
 Fisheries Management & Conservation
 Service (FIMF)
 Food & Agriculture Organization of the
 United Nations
 Viale delle Terme di Caracalla
 00153 Rome, Italy
 Tel (+39) 0657054735
 Fax (+39) 0657053020
 Email: Tore.Stromme@fao.org
 tore.stroemme@imr.no

Tandstad, Merete
 Fisheries Management & Conservation
 Service (FIMF)
 Food & Agriculture Organization of the
 United Nations
 Viale delle Terme di Caracalla
 00153 Rome, Italy
 Tel (+39) 0657052019
 Fax (+39) 0657053020
 Email: Merete.Tandstad@fao.org

Annex B: Agenda

		Lead
9:00-10:30	Introduction <ul style="list-style-type: none"> ○ Welcome ○ Agenda ○ Meeting objectives ○ The EAF-Nansen ○ Task Groups 	Kevern/Jorge Kwame
10:30-11:00	Coffee Break	
11:00-13:00	Report on activities (since project inception)	Kwame
	Discussions	All
	Project management structure and roles <ul style="list-style-type: none"> ● The Advisory Group ● Regional Steering Committees ● The Annual Forum 	All
	Mainstreaming of EAF-Nansen task group work in work of RFB Scientific Committees Discussions	Kwame/All
13.00 – 14.00	Lunch	
14:00-16:00	Feedback from Partners <ul style="list-style-type: none"> ● Conclusions of the Forum ● Ecosystems surveys and plan of work for 2009 ● R/V DR. FRIDTJOF NANSEN surveys - Costs and eligibility criteria for discounted rates 	Tore Tore, Kyriakos
	Discussions	
15:30-16.00	Coffee Break	
	Training & Fellowships Work Plan for 2009 Conclusions and Recommendations	Kwame

Annex C: The EAF-Nansen Project Components and Outputs

Component	Output	Activity
EAF Policy and Management	1. Policies formulated consistent with EAF principles at national and regional levels.	1.1 Review available international instruments relevant to EAF and preparation of overview document as a guide to the development of country and regional policy. 1.2 Integration of EAF considerations into policy making in selected partner countries through stakeholders' consultations/workshops. 1.3 Support for the development of policy documents consistent with EAF in selected partner countries.
	2. Revised management plans that include EAF considerations developed	2.1 Target desk studies on main fisheries, including their socio-economic significance. 2.2 Workshops/consultations to identify EAF issues in main fisheries at national and regional level. 2.3 Risk analysis workshops to prioritize issues and to develop operational objectives for these. 2.4 Analyses of management options required to incorporate ecosystem considerations in fisheries management. 2.5 Assistance to revise management plans (including consultations when required).
Ecosystem Assessment & Monitoring	3. Procedures and methods for assessment and monitoring of key ecosystem properties established, including the development of standardized data collections, sampling methods and appropriate set of scientific indicators	3.1 Standardization of data collection and reporting; development of data storage routines and analytical tools such as statistical modules, modules for spatial analysis (GIS approach) and time series analysis. 3.2 In close collaboration with other partners, the organization of resources and ecosystem surveys using the R/V DR. FRIDTJOF NANSEN including onboard training. 3.3 Organization of workshops on survey data analysis. 3.4 Establishment and/or strengthening of regional and international scientific working groups (inclusion of ecosystem considerations in WGs). 3.5 Development of scientific indicators for ecosystem monitoring based on both fisheries dependent and independent data. 3.6 Consideration and identification of socio-economic indicators.
Capacity Building	4. Increased capacity at scientific and management level in partner countries on EAF approaches	4.1 Training of personnel in fishery research institutes on methods that are appropriate to EAF, providing on site and on-vessel training. 4.2 Training fisheries managers to include EAF considerations in the management process including in participatory methods.

		<p>4.3 Building institutional capacity to develop information technology, distribution of data archives, emerging methodologies and an expanded knowledge base etc. in furtherance of an EAF.</p> <p>4.4 Support to study tours in specific disciplines.</p> <p>4.5 Fellowships</p> <p>4.6 Training Programme in key areas of EAF</p> <p>4.7 Training programs for the continuation of vessel related activities beyond the life of the project.</p>
Support to Regional Research Vessels	5. Advice on use of national or regional vessels for EAF related research including coordinated regional coverage by local or other vessels	<p>5.1 As and when necessary, provide on request, technical support to the running of acoustic instruments on local vessels to be used for research, including training of national personnel.</p> <p>5.2 Provide technical assistance to the local institutions in carrying out coordinated regional surveys by local research vessels, including on the job training of national personnel.</p> <p>5.3 Support regional surveys by local and international research vessels as well as related targeted research, through the organization of planning groups, including the planning of the inter-calibration between the R/V DR. FRIDTJOF NANSEN with local vessels.</p>
Planning & Dissemination	6. Project planning and dissemination of information.	<p>6.1 Organization of an Annual Forum.</p> <p>6.2 Organization of Steering Committees to assess the project progress, and formulate recommendations regarding requirements and priorities.</p> <p>6.3 Development of a project web site.</p> <p>6.4 Development of public awareness and educational information brochures and other means of communication.</p> <p>6.5 Broad dissemination of lessons learned through participation in other national, regional, and international fora/symposia as well as through sharing of project results, technical reports, and training material.</p> <p>6.6 Drawing on the FAO Technical Guidelines related to the Ecosystem Approach to Fisheries (FAO 2003) and experience gained, prepare field guidelines for implementation of EAF in developing countries (in English, French, and Portuguese).</p>

Annex D: Terms of Reference of Regional Task Group

An EAF Regional Task Group (RTG) will be established in each of the four operational regions of the EAF-Nansen project. The regions coincide with the geographical coverage of the Canary, Guinea, Benguela and Agulhas & Somali Current large Marine Ecosystem projects. Each RTG will report through the EAF-Nansen Coordinator to the Steering Committee. The Chair of each the RTGs will attend the Annual Forum of the EAF-Nansen project and will serve as resource to the Project Steering Committee.

There shall be a chair whose function shall be:

- chair the RTG meetings;
- represent the RTG in other fora as it may be required
- work closely and assist the project coordinator
- liaise with the chairs of the NTGs.

The Chair would be a member of the Scientific Committee of the relevant RFB. The vice chair will assume the functions of the chair in his absence. The tenure of office of the Chair (and vice Chair) will be for a period of two years.

The responsibilities of the RTG will include:

- coordinate and harmonise the work of National Task Groups, especially as regards technical issues and management recommendations at regional level;
- ensure consistency in the national EAF Baseline reports where necessary;
- provide input, comments and advice to the National Task Group (NTG);
- identify and prioritise the EAF issues requiring attention within the regional marine fisheries sector;
- assist in the development of regional goals and objectives for fisheries within an ecosystem approach, making use of input from the National Task Groups and other sources as appropriate;
- propose regional management measures and rules for the consideration of the scientific committee before proceeding to the Commission;
- propose suitable incentive measures to achieve EAF within the region, the barriers to implementation and appropriate means to overcome these;
- recommend appropriate institutional requirements (including capacity building) for successful implementation of EAF within the region;
- adapt and promote guidelines on EAF
- respond to requests from the Scientific Committee in relation to EAF.

Each RTG will consist of the following:

- 1 (or 2 depending on size of the region) representative (s) from each country in the region (the country must also designate an Alternate Task Group member who should be a member of the National Task Group);
- representatives of partner projects;
- representatives of regional non-governmental organizations with the required competency, so as to provide coverage of the major fishery types and interests;

- experts on specialised issues (e.g. economics, small-scale fisheries, community based management, legal) may be co-opted for particular meetings or activities as necessary.

The RTGs will meet as necessary but at least once per year. The first meeting of the RTG will familiarise itself with the EAF principles, consider its TORs and those of the national task groups and agree on a workplan and priority issues for implementation.

Annex E: Terms of Reference of National Task Group

A National Task Group (NTG) will be established in each country by the relevant Fisheries Management Authority as an advisory group on matters of EAF. The NTG will be responsible for overall coordination of the project in each country and will report to the RTG. The Chair of the NTG will be a member of the Regional Task Group.

There shall be a chair whose function shall be:

- chair the NTG meetings;
- represent the NTG in other fora as it may be required
- work closely and assist the project coordinator

The tenure of the chair will be for a period of two years.

The responsibilities of the NTG will include:

- oversee the implementation of the project within the country;
- liaise closely with the national fisheries management agency (Fisheries Department, Ministry of Fisheries) and other agencies as required;
- promote the incorporation and implementation of EAF principles and methodologies in national fisheries management;
- facilitate consultation with different stakeholders where required and ensure that stakeholder opinions are reflected in the work and results of the project;
- take lead in the preparation of the EAF baseline report;
- seek input, comments and advice from the Regional Task Group (RTG) and contribute to the work of the RTG;
- identify and prioritise the EAF issues requiring attention within the national marine fisheries sector, in consultation with stakeholders;
- provide input for the development of national goals and objectives for fisheries within an ecosystem approach, making use of existing policy documents (e.g. national Fisheries Act or equivalent), the identified priority issues, input from the fisheries management agency and other sources as appropriate;
- propose national management measures and rules required to achieve the EAF objectives, based on input from the RTG and FAO and other sources as appropriate;
- consider suitable incentive measures to achieve EAF, the barriers to implementation and appropriate means to overcome these;
- recommend appropriate institutional arrangements (including capacity building) for successful implementation of EAF;
- contribute to the formulation of draft national management plans for selected fisheries.

Each NTG will consist of:

- representatives of the fisheries management agency and key functional groups (e.g. MCS, legal, liaison (communication), policy and planning, etc.)
- representatives of the national fisheries research agency and universities;
- representatives of selected stakeholder groups so as to provide coverage of the major fishery types and interests;
- representatives of other relevant sectors outside the fisheries and of NGOs;
- representatives of national partner projects;

- experts on specialised issues (e.g. economics, small-scale fisheries, community-based management, legal) may be co-opted for particular meetings or activities as necessary.

The NTGs will meet as necessary but at least twice per year. The first meeting of the NTG will familiarise itself with the EAF principles, consider its TORs and agree on a workplan and priority issues for implementation.

**Annex F: Costs and Eligibility Criteria for Discounted Rates for the use of the
R/V DR. FRIDTJOF NANSEN**

The R/V DR. FRIDTJOF NANSEN operates directly within the EAF-Nansen project. Project Output 3: “Ecosystem assessments and monitoring ...” involves the use of R/V DR. FRIDTJOF NANSEN both for direct project activities and other surveys, assessment and monitoring of the marine environment

Cost of the vessel’s operations is shared between the primary donor (Norad) and requesting partners. Access to the vessel and the cost to the partners are determined by a minimum set of conditions (eligibility criteria) as outlined in the table below. Any proposal meeting the criteria below qualifies for the reduced rate which is USD 10,000 per day at present and Norad (through the EAF-Nansen project) pays the difference of the total daily cost.

All proposals received are evaluated in relation to the degree they fulfill the eligibility criteria and priorities are set. Also considered is feasibility in terms of vessel’s location and transfers. Once a year a Survey Planning Meeting is organized to discuss with Partners the proposals received and time schedule, including the terms and conditions of the survey.

If a proposal does not fulfill the criteria for reduced rates it could still be granted use of the vessel but at full cost, and depending on the availability of spare vessel time.

Criteria	Comment
<ul style="list-style-type: none"> The Proposal should conform with the objectives of the EAF-Nansen project <p><i>“Staff of the fisheries research institutions and management administrations in the participating countries provided with additional knowledge on their ecosystems and on EAF principles for their use in planning and monitoring”.</i></p>	<p>→ Monitoring of key ecosystem properties and features (or address key gaps in ecosystem knowledge as identified through a prioritization process)</p> <p>→ should lead to strengthened fisheries management</p>
<ul style="list-style-type: none"> Area of coverage 	<p>→ Priority area for the project for the period 2007-2011 is Sub-Saharan Africa</p>
<ul style="list-style-type: none"> Ecosystem oriented research 	<p>→ Not only limited to fisheries resources monitoring; Shall provide better understanding of ecosystem processes</p>
<ul style="list-style-type: none"> Capacity building 	<p>→ The proposal should contain an element of capacity building of scientists and managers from the project area</p> <ul style="list-style-type: none"> – Post-survey meetings – Survey data analysis – etc
<ul style="list-style-type: none"> Local ownership 	<p>→ The proposal should show evidence of local participation and creation of local ownership</p>
<ul style="list-style-type: none"> Regional approach 	<p>→ Support of regional processes. Is the proposal part of a wider ecosystem initiative?</p>

The first meeting of the EAF-Nansen project Advisory Group was held at the FAO headquarters in Rome, on 17 December 2008. The meeting was attended by 15 Advisory Group members and observers and was chaired by Dr Kevern Cochrane, Chief of the FAO Fisheries Management and Conservation Service.

The meeting was informed that although the project document does not make provision for an Advisory Group, from internal discussions on the governance structure of the project FAO felt the need for an independent body that would look across the regions and would bring in experiences from outside the project area. Consequently, the Advisory Group was constituted to give direction to the project, to play the role of a global “Steering Committee” to assess the project progress, and to advise the project management on implementation of activities.

The project team made presentations on project activities since inception, the project management structure including the role of the EAF national and regional Task Groups, the ecosystem survey component of the project, communications and training. Also presented were the outcomes of the Survey Planning meeting and Project Forum that had taken place on 15 and 16 December respectively and also the work plan for 2009.

The Advisory Group made a number of recommendations on project implementation and outreach and asked FAO to appraise them from time to time on progress of work.