

Beachcraft Trials



AT ENNORE
IN PICTURES

Four specially designed beachcraft prototypes built at yards in Tamil Nadu and Andhra Pradesh were tested for their beachlanding and surf-crossing abilities at Ennore, 20 kilometres north of Madras, during May-June 1980. Supervising the trials were experts from Norway, Australia and India. Keen participants in the trials were four fishermen from Ennore village and six from Kakinada in Andhra Pradesh, who constituted the crew. Excited spectators included young and old, male and female, from the Ennore fishing community. The trials, which led to the selection of two promising prototypes (IND 11 and IND 13) for intensive fishing operations, were organized by the Bay of Bengal Programme, jointly with the Governments of Tamil Nadu and Andhra Pradesh.



IND-10 (above): 7.02 m long. Decked, made of teak, equipped with sail and 5 hp inboard engine.

IND-11 (below): 7.40 m long. Uses polystyrene logs enclosed in a non-watertight framework. Equipped with sail and 5 hp inboard engine. One of the two prototypes selected for intensive fishing trials.





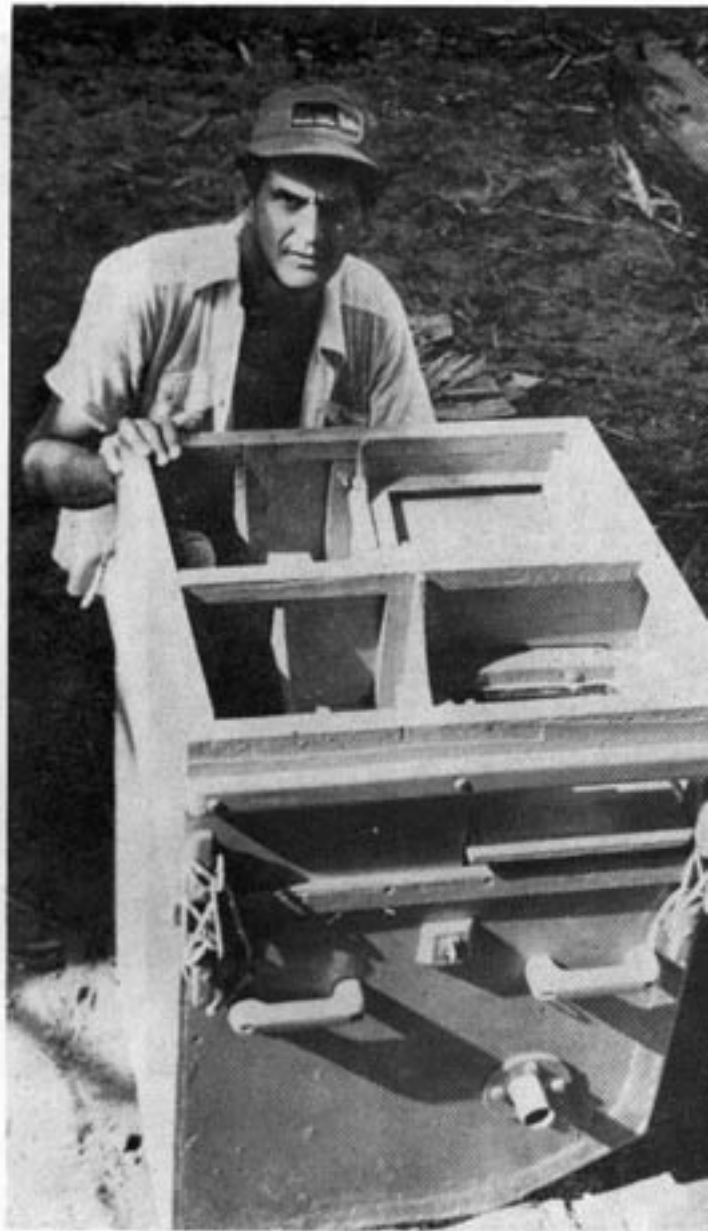
IND-13 (above): 7.40 m long. Decked, built of marine plywood. Equipped with sail and 5 hp inboard engine. One of the two prototypes selected for intensive fishing trials.

IND-14 (below): 7.20 m long. Twin-hull craft built in marine plywood. Hulls decked forward and aft.



Engine box with lid top removed, showing inlet and outlet for air.

Aft view of engine box showing power pole.

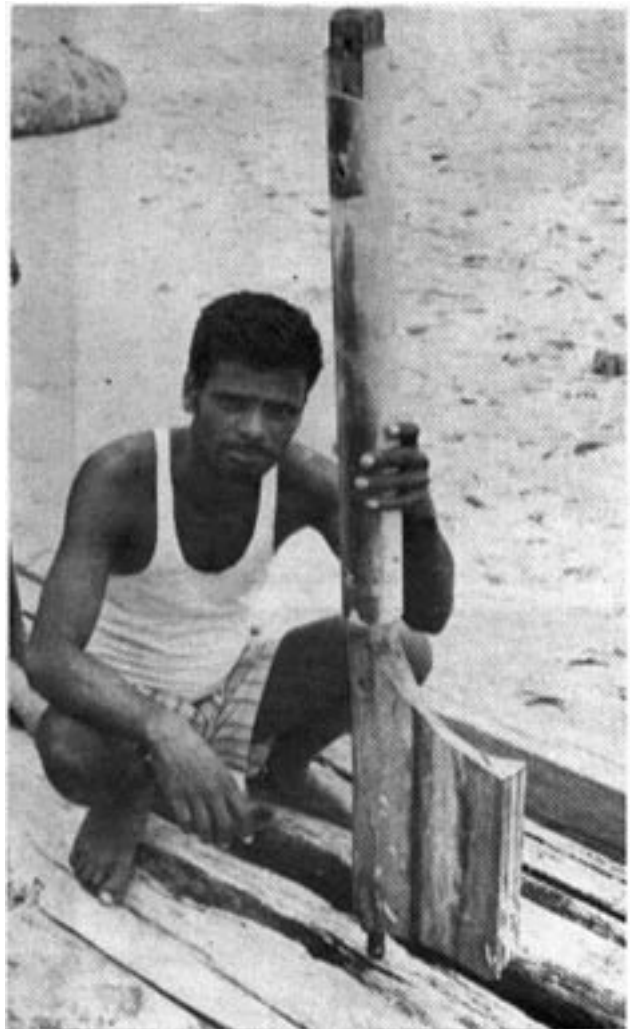


Engine box with forward face and lid removed. Note pivot attached to side.

Engine box installed in IND—11.
Lid removed. Note Inlet and outlet ports in lid.



Fish tail rudder with PVC lined stock.



Propeller and rudder in up position.



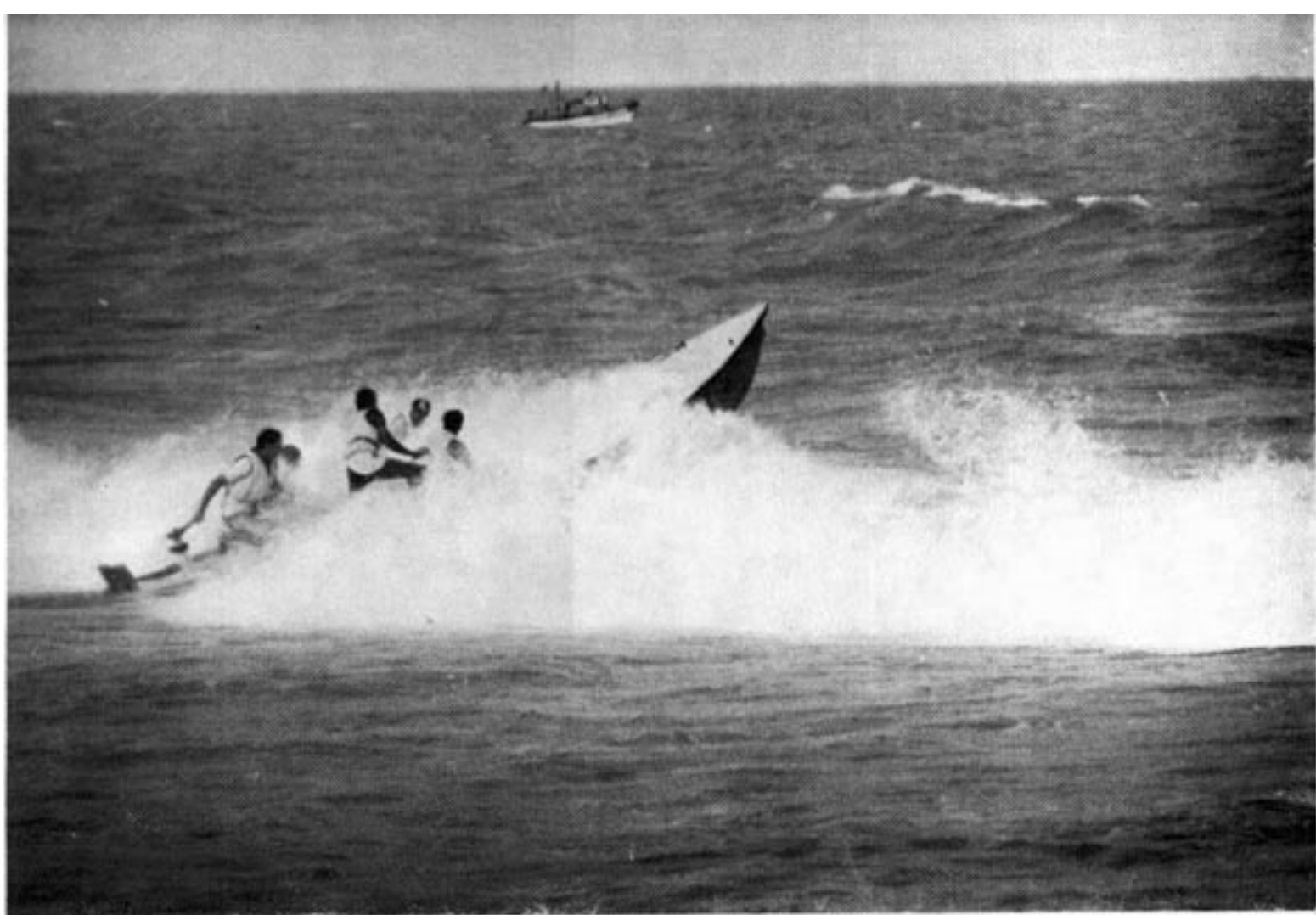
Propeller and rudder in down position.

IND-11 waiting for the right moment to cross the surf.



IND-11 cutting through a breaking wave.





IND-13 crossing the surf.



IND-14 going out. Note platform height from water level.

IND-11 landing on the beach with the crew poised to push the boat up the beach.

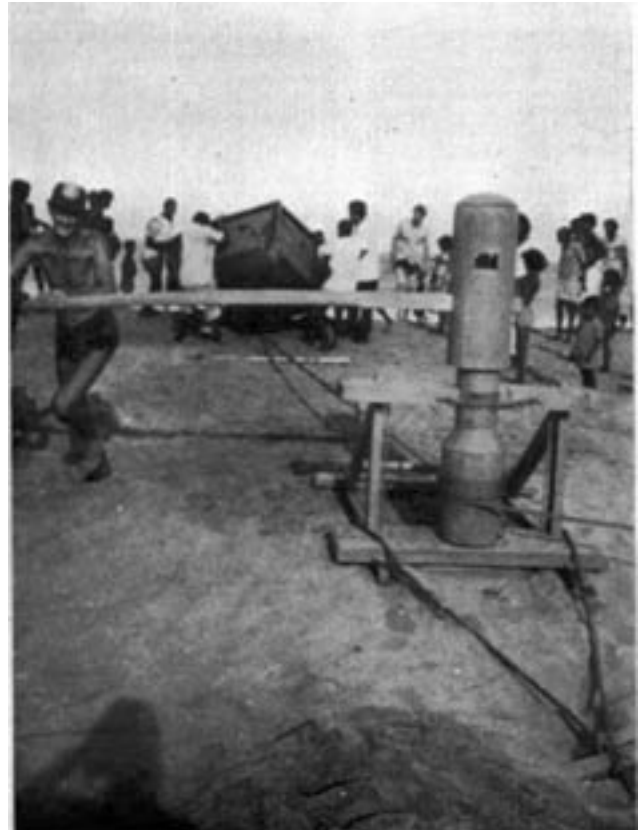


IND-11 using the rope system to cross the surf. Note fore and aft rope fairleads with locking arrangement.

"Walking" IND-11 up the beach. Note steepness of the beach.



Planks and rollers placed beneath IND-10. Note steepness of the beach.



Hauling up IND-11 with the capstan.

The Nava from Andhra Pradesh.



Fishermen using the Andhra Pradesh Nava.