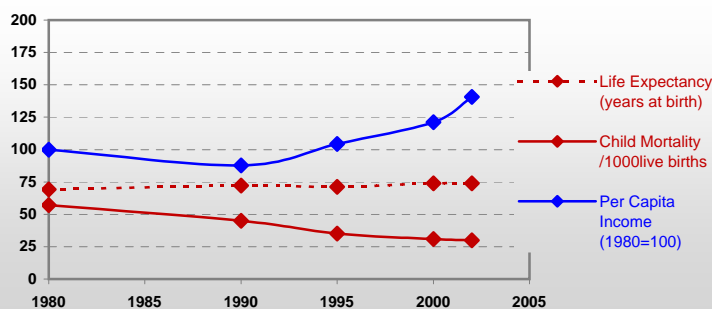


Albania



General / Welfare

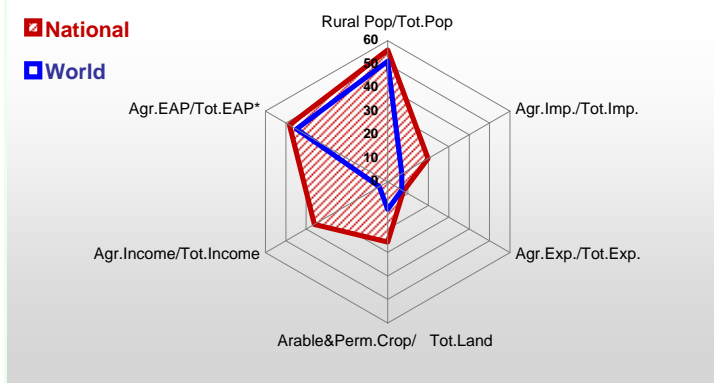
Population ^{04 *}	3 194
Per Capita Income ^{02 **}	1 278
Per Capita Agricultural Income ^{02**}	986
Total Exports ^{02 ****}	330
Total Imports ^{02 ****}	1 504
Agric. External Assistance ^{99-01 ***}	115 658
Food Consumption Inequality (G) ^{ly}	0,13
Income Inequality (G) ^{ly}	0,28
Land Inequality (G) ^{ly}	0,84
Undernourished Population % ⁰⁰⁻⁰²	6



* 1000 ** \$ *** 1000 \$ **** Million \$ --- (G) : Gini Coefficient --- Income refers to GDP at 1995 Constant Prices

Agriculture In The Economy^{ly}

Resources

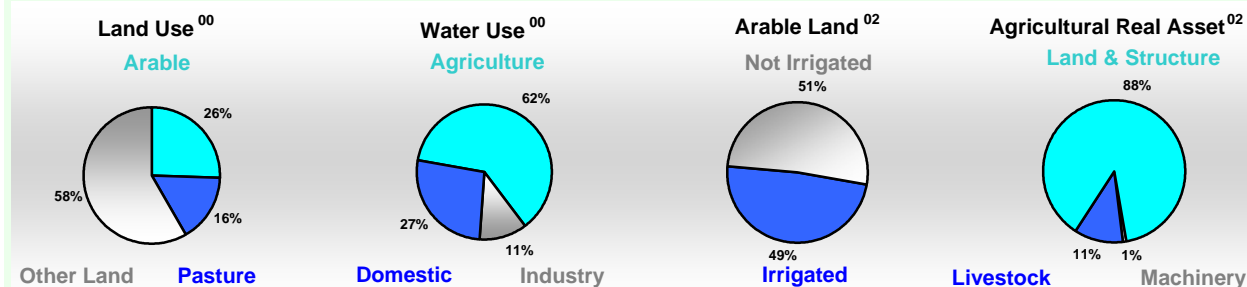


Arable Land ^{00 *}	578
Permanent Crops ^{00 *}	121
Pasture ^{00 *}	445
Cattle & Buffaloes ^{03 **}	700
Sheep & Goats ^{03 **}	2 825
Tractors ^{02 *}	14
Harvesters&Threshers ^{02 *}	1
Fertilizers Production ^{02 ***}	-
Fertilizers Consumption ^{02 ***}	35 357
Rainfall Index ^{02 (mm)}	1 136

* EAP : Economically Active Population

* 1000ha ** 1000heads *** Tonnes N,P₂O₅,K₂O

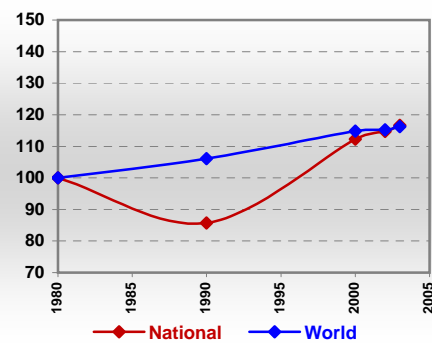
Resources Distribution



Production

Agriculture^{03 *}	Pulpwd.,Rnd&Split ^{**}	15
Cereals	Roundwood ^{**}	305
Meat	Log:Saw&Veneer ^{**}	68
Fruits & Vegetables	Sawnwood ^{**}	97
Roots & Tubers	Wood Charcoal [*]	3
Pulses	Woodfuel ^{**}	222
Oilseeds & Nuts	Wood Pulp [*]	-
Sugar Crops	Wood-based Panels ^{**}	37
Tobacco	Fisheries^{02 *}	0
Fibre Crops	Pelagic	0
Forestry⁰²	Freshwater	1
Indust.Roundwood ^{**}	Demersal	2
Paper, Paperboard [*]	Molluscs	1

Per Capita Agricultural Production Index



* 1000Tonnes ** 1000m³

Time reference= ⁹⁹⁻⁰¹:1999-2001, ⁰⁰:2000, ⁰²:2002, ⁰⁰⁻⁰²:2000-2002, ⁰³:2003, ⁰⁴:2004, ^{ly}:Latest Available Year



Country profiles

Albania

Trade ⁰²

Agricultural Imports *	297
% 4 Major Imports in Agr.Imp	19
% Agr. Imports in Tot. Imports	20
Fishery Imports *	10
Forestry Imports *	14
Agricultural Exports *	25
% 4 Major Exports in Agr.Exp.	18
% Agr. Exports in Tot.Exports	8
Fishery Exports *	9
Forestry Exports *	5



Trade Partners & Products

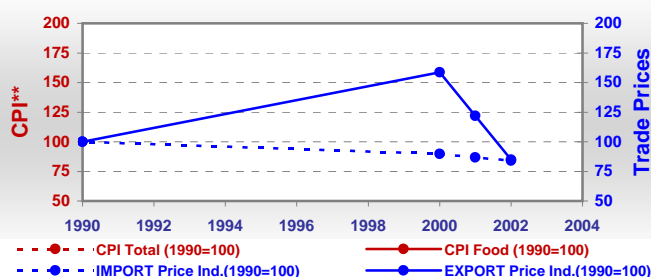
Major Import Partner	Greece	Italy	Russian Fed
Major Export Partner	Greece	Germany	Italy
Major Imports	Cigarettes	Wheat	Flour Wheat
Major Exports	Tobacco	Skinwool Sh	Cigarettes

* Million \$

Prices

Producer Prices ⁰⁰⁻⁰²	\$*	\$ Green *
Wheat	-	-
Rice	-	-
Maize	-	-
Soybean	-	-
Coffee	-	-
Tobacco	-	-
Cow Milk	-	-
Cattle (Live Weight)	-	-
Pig (Live Weight)	-	-
Chicken (Live Weight)	-	-

Consumer and Agricultural Trade Price Indices

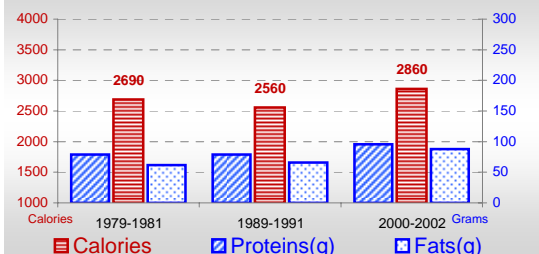


* per Tonne

** CPI : Consumer Price Index

Consumption

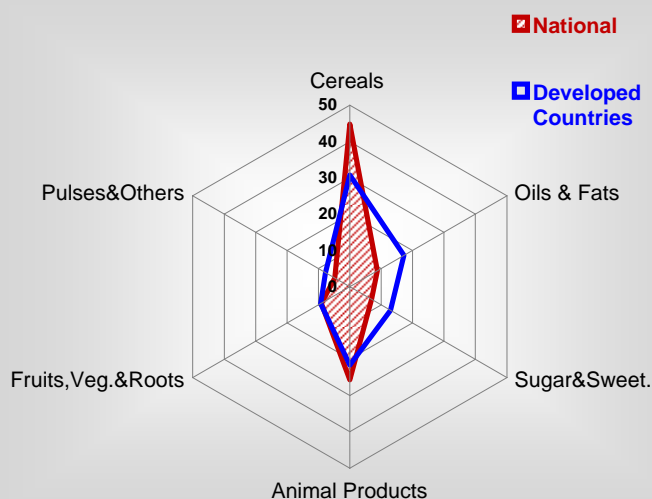
Per Capita Daily Consumption



Per Capita Daily Calorie Intake From Selected Food Items ⁰⁰⁻⁰²

Rice	61
Wheat	1185
Maize	29
Sorghum	-
Potatoes	58
Cassava	-
Sugar	192
Soybean Oil	18
Palm Oil	-
Milk	521
Anim.Fats(Raw&Butter)	49
Eggs	20
Pig Meat	47
Poultry Meat	42
Bovine Meat	55
Sheep & Goats Meat	34

Source of Dietary Energy Consumption % ⁰⁰⁻⁰²



Food Balance ⁰⁰⁻⁰² (1000Tonnes)

Food Groups	Production (+)	Exports (-)	Imports (+)	Seed, Feed, Other Uses (-)	Consumption (=)
Cereals	529	-	464	472	521
Veg.oils	2	-	37	13	26
Sugar&Sw.	4	4	88	8	80
Roots&Tub.	163	0	21	85	99
Meat	69	-	37	1	105
Milk	981	1	20	84	916

Time reference= ⁹⁹⁻⁰¹:1999-2001, ⁰⁰:2000, ⁰²:2002, ⁰⁰⁻⁰²:2000-2002, ⁰³:2003, ⁰⁴:2004, ^{ly}:Latest Available Year