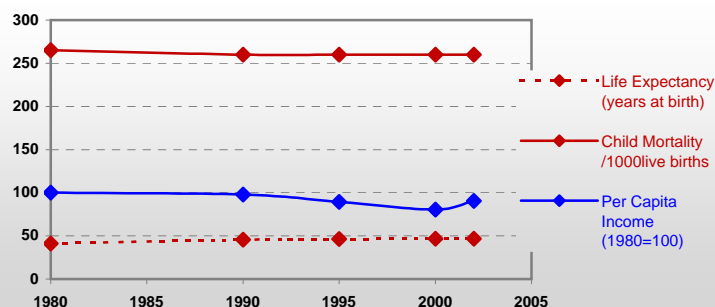


## Angola



### General / Welfare

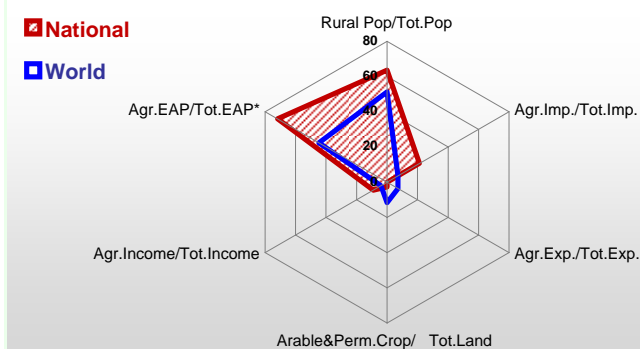
Population <sup>04 *</sup>	14 078
Per Capita Income <sup>02 **</sup>	623
Per Capita Agricultural Income <sup>02**</sup>	75
Total Exports <sup>02 ****</sup>	7 510
Total Imports <sup>02 ****</sup>	3 300
Agric. External Assistance <sup>99-01 ***</sup>	34 665
Food Consumption Inequality (G) <sup>ly</sup>	0,17
Income Inequality (G) <sup>ly</sup>	-
Land Inequality (G) <sup>ly</sup>	-
Undernourished Population % <sup>00-02</sup>	40



\* 1000 \*\* \$ \*\*\*\* 1000 \$ \*\*\*\*\* Million \$ --- (G) : Gini Coefficient --- Income refers to GDP at 1995 Constant Prices

### Agriculture In The Economy<sup>ly</sup>

### Resources

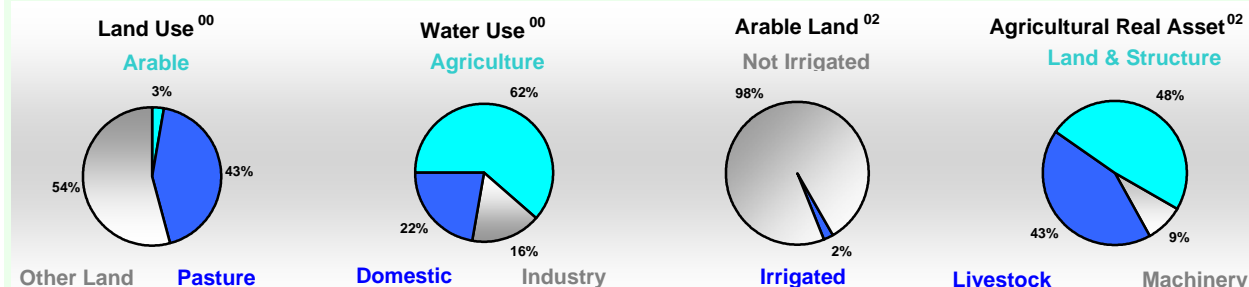


Arable Land <sup>00 *</sup>	3 000
Permanent Crops <sup>00 *</sup>	300
Pasture <sup>00 *</sup>	54 000
Cattle & Buffaloes <sup>03 **</sup>	4 150
Sheep & Goats <sup>03 **</sup>	2 390
Tractors <sup>02 *</sup>	3
Harvesters&Threshers <sup>02 *</sup>	-
Fertilizers Production <sup>02 ***</sup>	-
Fertilizers Consumption <sup>02 ***</sup>	-
Rainfall Index <sup>02 (mm)</sup>	1 124

\* EAP : Economically Active Population

\* 1000ha \*\* 1000heads \*\*\* Tonnes N,P<sub>2</sub>O<sub>5</sub>,K<sub>2</sub>O

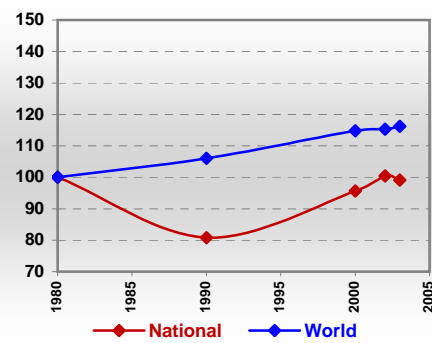
### Resources Distribution



### Production

<b>Agriculture<sup>03 *</sup></b>		
Cereals	663	Pulpwd.,Rnd&Split <sup>**</sup>
Meat	139	Roundwood <sup>**</sup>
Fruits & Vegetables	721	Log:Saw&Veneer <sup>**</sup>
Roots & Tubers	6 165	Sawnwood <sup>**</sup>
Pulses	66	Wood Charcoal <sup>*</sup>
Oilseeds & Nuts	83	Woodfuel <sup>**</sup>
Sugar Crops	360	Wood Pulp <sup>*</sup>
Tobacco	3	Wood-based Panels <sup>**</sup>
Fibre Crops	6	
		<b>Fisheries<sup>02 *</sup></b>
		Pelagic
		Freshwater
<b>Forestry<sup>02</sup></b>		Demersal
Indust.Roundwood <sup>**</sup>	1 116	Molluscs
Paper, Paperboard <sup>*</sup>	-	

### Per Capita Agricultural Production Index



\* 1000Tonnes \*\* 1000m<sup>3</sup>

Time reference= <sup>99-01</sup> :1999-2001, <sup>00</sup> :2000, <sup>02</sup> :2002, <sup>00-02</sup> :2000-2002, <sup>03</sup> :2003, <sup>04</sup> :2004, <sup>ly</sup> :Latest Available Year

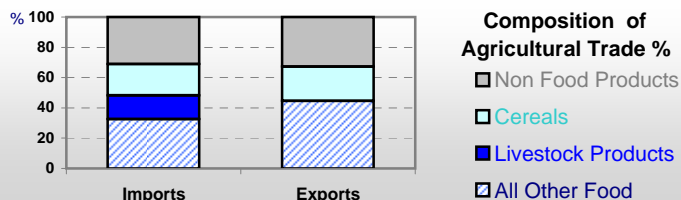


# Country profiles

## Angola

### Trade <sup>02</sup>

Agricultural Imports *	701
% 4 Major Imports in Agr.Imp	6
% Agr. Imports in Tot. Imports	21
Fishery Imports *	18
Forestry Imports *	2
Agricultural Exports *	1
% 4 Major Exports in Agr.Exp.	26
% Agr. Exports in Tot.Exports	0
Fishery Exports *	35
Forestry Exports *	1



### Trade Partners & Products

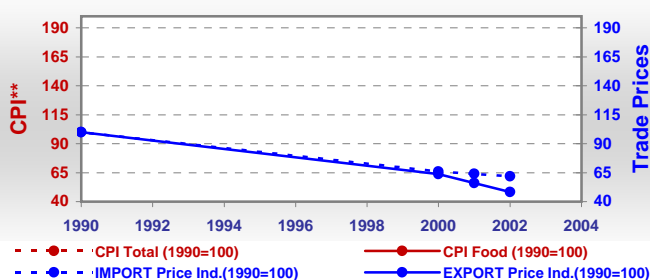
Major Import Partner			
Major Export Partner			
Major Imports	Beer Barley	Bev Non-Alc	Sugar Refind
Major Exports	Fish Meal	Coffee,Green	Pastry

\* Million \$

### Prices

Producer Prices <sup>00-02</sup>	\$*	\$ Green *
Wheat	-	-
Rice	-	-
Maize	-	-
Soybean	-	-
Coffee	-	-
Tobacco	-	-
Cow Milk	-	-
Cattle (Live Weight)	-	-
Pig (Live Weight)	-	-
Chicken (Live Weight)	-	-

### Consumer and Agricultural Trade Price Indices

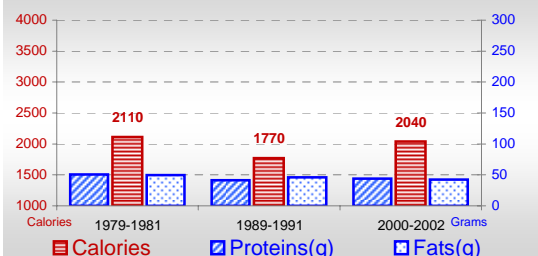


\* per Tonne

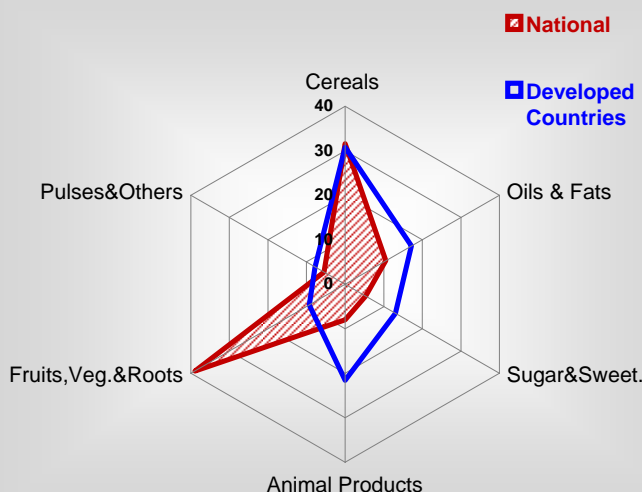
\*\* CPI : Consumer Price Index

### Consumption

#### Per Capita Daily Consumption



#### Source of Dietary Energy Consumption % <sup>00-02</sup>



#### Per Capita Daily Calorie Intake From Selected Food Items <sup>00-02</sup>

Rice	36
Wheat	200
Maize	343
Sorghum	-
Potatoes	4
Cassava	671
Sugar	88
Soybean Oil	84
Palm Oil	68
Milk	27
Anim.Fats(Raw&Butter)	8
Eggs	3
Pig Meat	35
Poultry Meat	16
Bovine Meat	42
Sheep & Goats Meat	4

#### Food Balance <sup>00-02</sup> (1000Tonnes)

Food Groups	Production (+)	Exports (-)	Imports (+)	Seed, Feed, Other Uses (-)	Consumption (=)
Cereals	555	-	627	220	962
Veg.oils	73	-	72	35	110
Sugar&Sw.	54	-	208	108	154
Roots&Tub.	5 510	-	13	2 110	3 412
Meat	139	-	88	0	227
Milk	195	-	23	12	206

Time reference= <sup>99-01</sup>:1999-2001, <sup>00</sup>:2000, <sup>02</sup>:2002, <sup>00-02</sup>:2000-2002, <sup>03</sup>:2003, <sup>04</sup>:2004, <sup>ly</sup>:Latest Available Year