



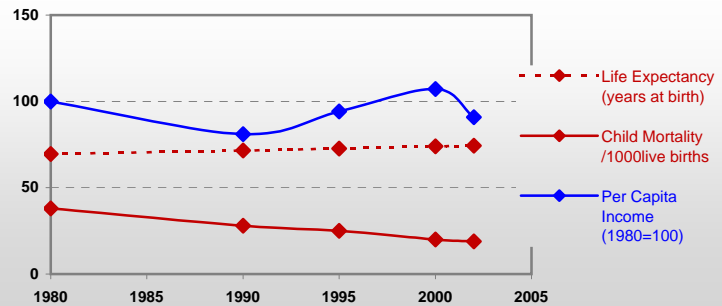
# Country profiles

## Argentina



### General / Welfare

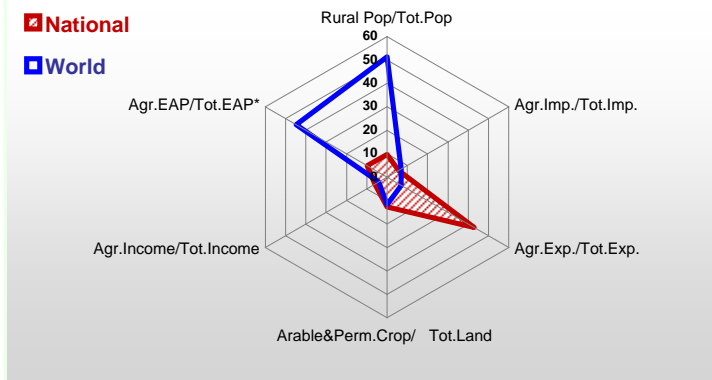
Population <sup>04 *</sup>	38 871
Per Capita Income <sup>02 **</sup>	6 842
Per Capita Agricultural Income <sup>02**</sup>	4 037
Total Exports <sup>02 ****</sup>	25 709
Total Imports <sup>02 ****</sup>	8 990
Agric. External Assistance <sup>99-01 ***</sup>	67 190
Food Consumption Inequality (G) <sup>ly</sup>	0,12
Income Inequality (G) <sup>ly</sup>	0,52
Land Inequality (G) <sup>ly</sup>	0,83
Undernourished Population % <sup>00-02</sup>	< 2.5



\* 1000 \*\* \$ \*\*\* 1000 \$ \*\*\*\* Million \$ --- (G) : Gini Coefficient --- Income refers to GDP at 1995 Constant Prices

### Agriculture In The Economy<sup>ly</sup>

### Resources

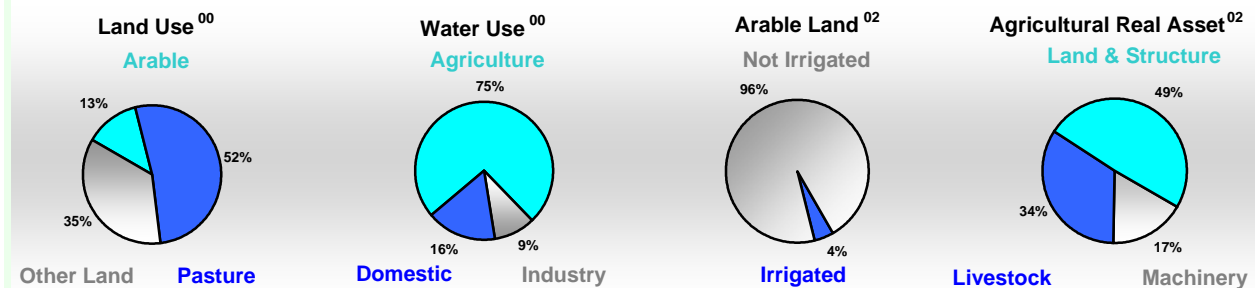


Arable Land <sup>00 *</sup>	33 500
Permanent Crops <sup>00 *</sup>	1 300
Pasture <sup>00 *</sup>	142 000
Cattle & Buffaloes <sup>03 **</sup>	50 869
Sheep & Goats <sup>03 **</sup>	16 650
Tractors <sup>02 *</sup>	9
Harvesters&Threshers <sup>02 *</sup>	1
Fertilizers Production <sup>02 ***</sup>	523 700
Fertilizers Consumption <sup>02 ***</sup>	739 526
Rainfall Index <sup>02 (mm)</sup>	1 062

\* EAP : Economically Active Population

\* 1000ha \*\* 1000heads \*\*\* Tonnes N,P<sub>2</sub>O<sub>5</sub>,K<sub>2</sub>O

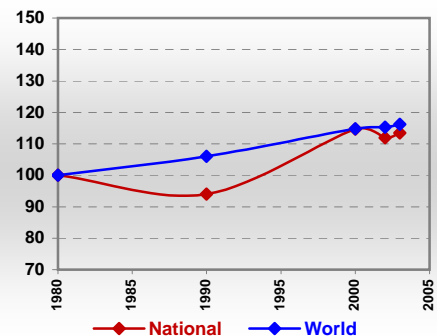
### Resources Distribution



### Production

<b>Agriculture<sup>03 *</sup></b>		Pulpwd.,Rnd&Split <sup>**</sup>	2 962
Cereals	33 961	Roundwood <sup>**</sup>	9 307
Meat	3 725	Log:Saw&Veneer <sup>**</sup>	2 274
Fruits & Vegetables	10 585	Sawnwood <sup>**</sup>	2 130
Roots & Tubers	2 635	Wood Charcoal <sup>*</sup>	6
Pulses	277	Woodfuel <sup>**</sup>	3 972
Oilseeds & Nuts	7 947	Wood Pulp <sup>*</sup>	678
Sugar Crops	19 250	Wood-based Panels <sup>**</sup>	692
Tobacco	118	<b>Fisheries<sup>02 *</sup></b>	
Fibre Crops	68	Pelagic	30
<b>Forestry<sup>02</sup></b>		Freshwater	33
Indust.Roundwood <sup>**</sup>	5 335	Demersal	602
Paper, Paperboard <sup>*</sup>	1 338	Molluscs	52

### Per Capita Agricultural Production Index



\* 1000Tonnes \*\* 1000m<sup>3</sup>

Time reference= <sup>99-01</sup> :1999-2001, <sup>00</sup> :2000, <sup>02</sup> :2002, <sup>00-02</sup> :2000-2002, <sup>03</sup> :2003, <sup>04</sup> :2004, <sup>ly</sup> :Latest Available Year

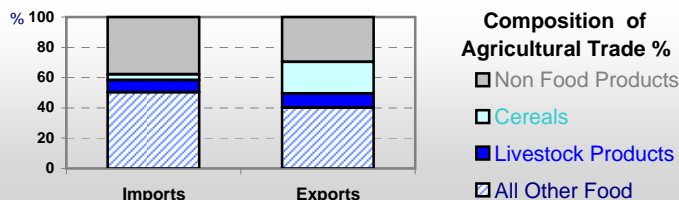


# Country profiles

## Argentina

### Trade <sup>02</sup>

Agricultural Imports *	502
% 4 Major Imports in Agr.Imp	15
% Agr. Imports in Tot. Imports	6
Fishery Imports *	14
Forestry Imports *	259
Agricultural Exports *	11 022
% 4 Major Exports in Agr.Exp.	32
% Agr. Exports in Tot.Exports	43
Fishery Exports *	728
Forestry Exports *	281



### Trade Partners & Products

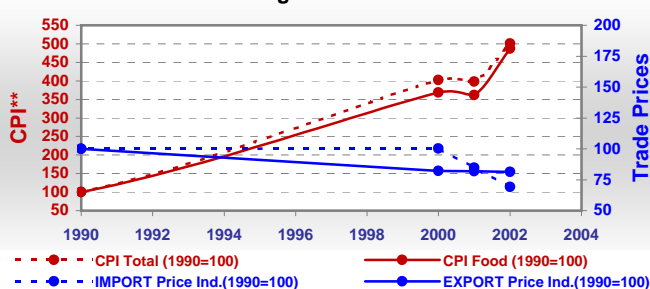
<b>Major Import Partner</b>	Brazil	Paraguay	USA
<b>Major Export Partner</b>	Brazil	Netherlands	China
<b>Major Imports</b>	Soybeans	Food Prep	Bananas
<b>Major Exports</b>	Cake Soybean	Oil Soybean	Soybeans

\* Million \$

### Prices

Producer Prices <sup>00-02</sup>	\$*	\$ Green *
Wheat	118	147
Rice	117	147
Maize	81	97
Soybean	168	199
Coffee	-	-
Tobacco	610	752
Cow Milk	134	144
Cattle (Live Weight)	710	763
Pig (Live Weight)	697	760
Chicken (Live Weight)	576	607

### Consumer and Agricultural Trade Price Indices

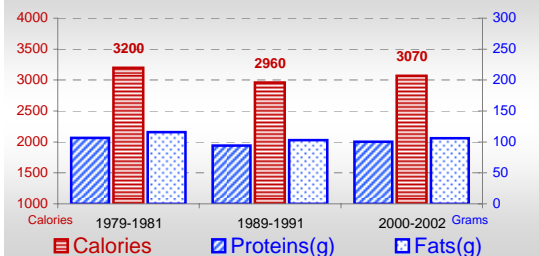


\* per Tonne

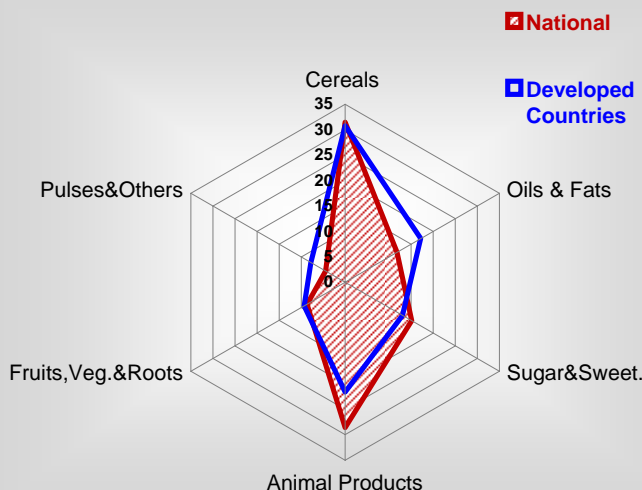
\*\* CPI : Consumer Price Index

### Consumption

#### Per Capita Daily Consumption



#### Source of Dietary Energy Consumption % <sup>00-02</sup>



#### Per Capita Daily Calorie Intake From Selected Food Items <sup>00-02</sup>

Rice	45
Wheat	824
Maize	87
Sorghum	-
Potatoes	93
Cassava	5
Sugar	392
Soybean Oil	33
Palm Oil	-
Milk	270
Anim.Fats(Raw&Butter)	74
Eggs	26
Pig Meat	50
Poultry Meat	113
Bovine Meat	371
Sheep & Goats Meat	9

#### Food Balance <sup>00-02</sup> (1000Tonnes)

Food Groups	Production (+)	Exports (-)	Imports (+)	Seed, Feed, Other Uses (-)	Consumption (=)
Cereals	35 306	22 682	69	7 738	4 955
Veg.oils	5 216	4 595	29	203	447
Sugar&Sw.	2 122	430	21	-62	1 775
Roots&Tub.	2 832	157	58	477	2 255
Meat	3 990	366	95	118	3 601
Milk	9 496	1 395	63	578	7 586

Time reference= <sup>99-01</sup>:1999-2001, <sup>00</sup>:2000, <sup>02</sup>:2002, <sup>00-02</sup>:2000-2002, <sup>03</sup>:2003, <sup>04</sup>:2004, <sup>ly</sup>:Latest Available Year