



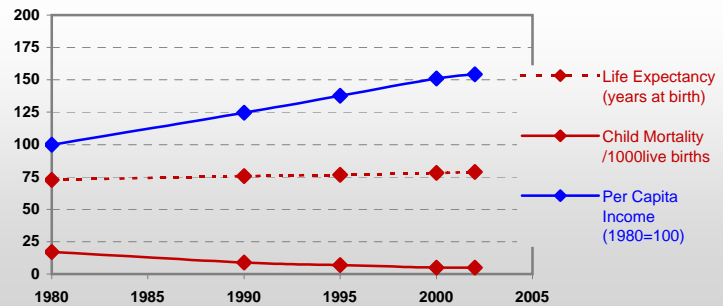
# Country profiles

## Austria



### General / Welfare

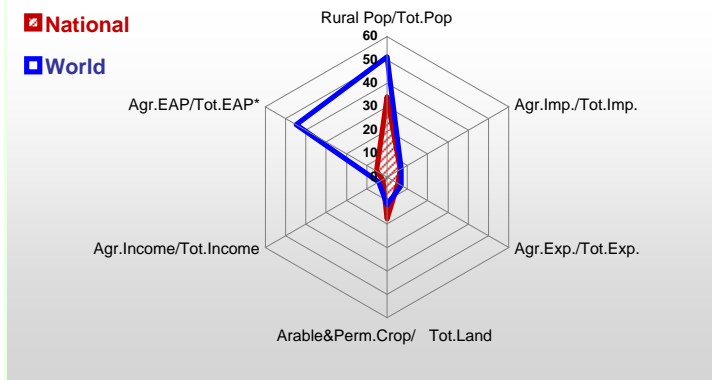
Population <sup>04 *</sup>	8 120
Per Capita Income <sup>02 **</sup>	34 044
Per Capita Agricultural Income <sup>02**</sup>	16 484
Total Exports <sup>02 ****</sup>	78 706
Total Imports <sup>02 ****</sup>	78 333
Agric. External Assistance <sup>99-01 ***</sup>	-86 368
Food Consumption Inequality (G) <sup>ly</sup>	0,11
Income Inequality (G) <sup>ly</sup>	0,30
Land Inequality (G) <sup>ly</sup>	0,59
Undernourished Population % <sup>00-02</sup>	< 2.5



\* 1000 \*\* \$ \*\*\*\* Million \$ --- (G): Gini Coefficient --- Income refers to GDP at 1995 Constant Prices

### Agriculture In The Economy<sup>ly</sup>

### Resources

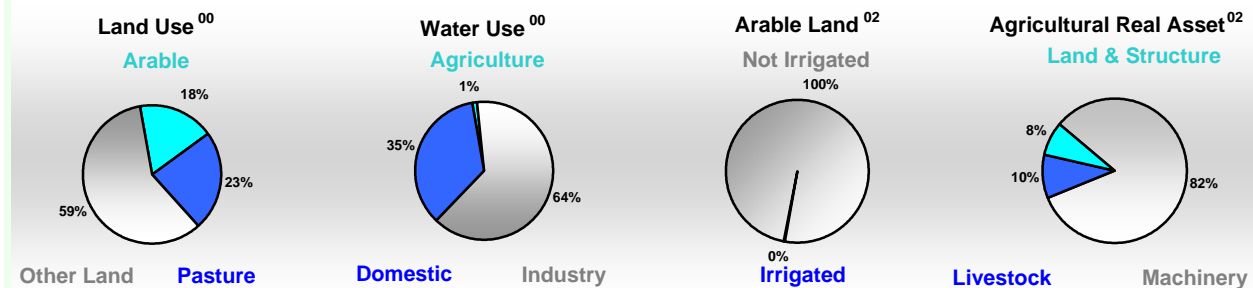


Arable Land <sup>00 *</sup>	1 399
Permanent Crops <sup>00 *</sup>	71
Pasture <sup>00 *</sup>	1 920
Cattle & Buffaloes <sup>03 **</sup>	2 067
Sheep & Goats <sup>03 **</sup>	362
Tractors <sup>02 *</sup>	237
Harvesters&Threshers <sup>02 *</sup>	10
Fertilizers Production <sup>02 ***</sup>	325 600
Fertilizers Consumption <sup>02 ***</sup>	208 300
Rainfall Index <sup>02 (mm)</sup>	1 230

\* EAP: Economically Active Population

\* 1000ha \*\* 1000heads \*\*\* Tonnes N,P<sub>2</sub>O<sub>5</sub>,K<sub>2</sub>O

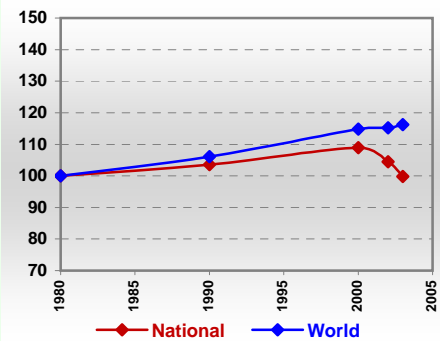
### Resources Distribution



### Production

<b>Agriculture<sup>03 *</sup></b>		Pulpwd.,Rnd&Split <sup>**</sup>	2 626
Cereals	3 990	Roundwood <sup>**</sup>	14 845
Meat	998	Log:Saw&Veneer <sup>**</sup>	9 183
Fruits & Vegetables	1 636	Sawnwood <sup>**</sup>	10 415
Roots & Tubers	560	Wood Charcoal <sup>*</sup>	-
Pulses	113	Woodfuel <sup>**</sup>	3 036
Oilseeds & Nuts	94	Wood Pulp <sup>*</sup>	1 755
Sugar Crops	2 585	Wood-based Panels <sup>**</sup>	3 420
Tobacco	0	<b>Fisheries<sup>02 *</sup></b>	
Fibre Crops	-	Pelagic	-
<b>Forestry<sup>02</sup></b>		Freshwater	3
Indust.Roundwood <sup>**</sup>	11 809	Demersal	-
Paper, Paperboard <sup>*</sup>	4 419	Molluscs	-

### Per Capita Agricultural Production Index



\* 1000Tonnes \*\* 1000m<sup>3</sup>

Time reference= <sup>99-01</sup>:1999-2001, <sup>00</sup>:2000, <sup>02</sup>:2002, <sup>00-02</sup>:2000-2002, <sup>03</sup>:2003, <sup>04</sup>:2004, <sup>ly</sup>:Latest Available Year

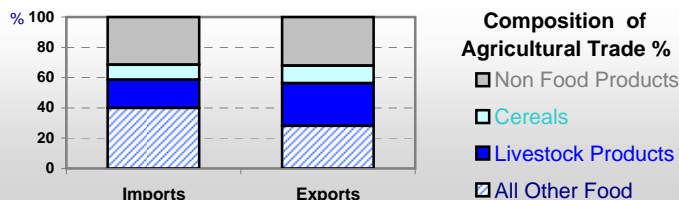


# Country profiles

## Austria

### Trade <sup>02</sup>

Agricultural Imports *	4 973
% 4 Major Imports in Agr.Imp	14
% Agr. Imports in Tot. Imports	6
Fishery Imports *	193
Forestry Imports *	2 232
Agricultural Exports *	4 167
% 4 Major Exports in Agr.Exp.	9
% Agr. Exports in Tot.Exports	5
Fishery Exports *	19
Forestry Exports *	4 622



### Trade Partners & Products

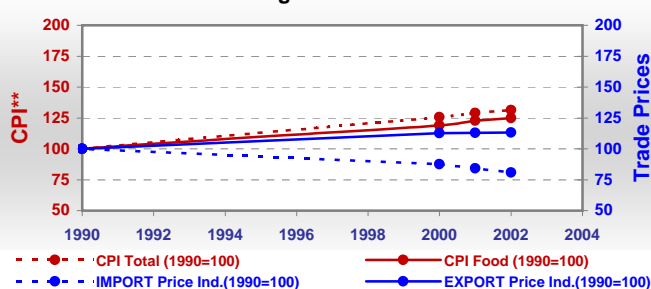
Major Import Partner	Germany	Italy	Netherlands
Major Export Partner	Germany	Italy	Switzerland
Major Imports	Food Prep	Pastry	Cheese W Cow
Major Exports	Bev Non-Alc	Pastry	Cheese W Cow

\* Million \$

### Prices

Producer Prices <sup>00-02</sup>	\$*	\$ Green *
Wheat	95	82
Rice	-	-
Maize	94	81
Soybean	184	159
Coffee	-	-
Tobacco	1 003	863
Cow Milk	287	247
Cattle (Live Weight)	1 340	1 153
Pig (Live Weight)	1 082	934
Chicken (Live Weight)	735	633

### Consumer and Agricultural Trade Price Indices

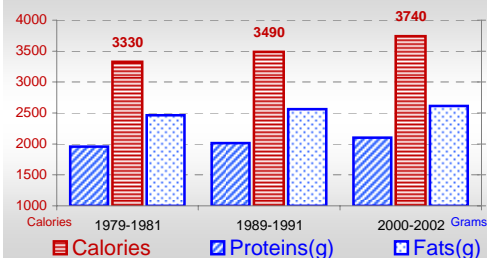


\* per Tonne

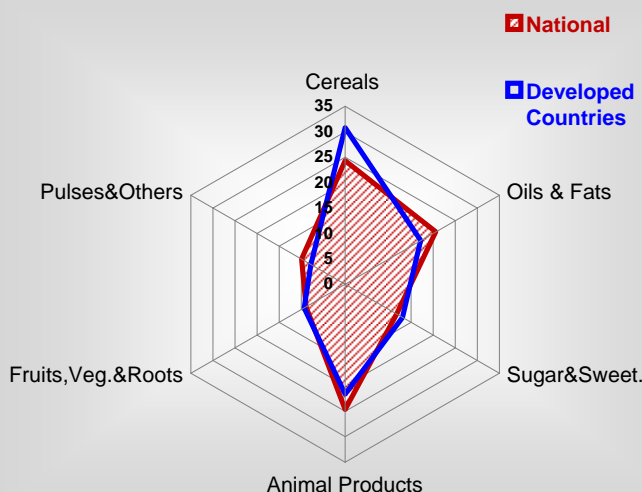
\*\* CPI : Consumer Price Index

### Consumption

#### Per Capita Daily Consumption



#### Source of Dietary Energy Consumption % <sup>00-02</sup>



#### Per Capita Daily Calorie Intake From Selected Food Items <sup>00-02</sup>

Rice	61
Wheat	625
Maize	109
Sorghum	-
Potatoes	117
Cassava	-
Sugar	410
Soybean Oil	66
Palm Oil	12
Milk	359
Anim.Fats(Raw&Butter)	298
Eggs	49
Pig Meat	352
Poultry Meat	62
Bovine Meat	60
Sheep & Goats Meat	7

#### Food Balance <sup>00-02</sup> (1000Tonnes)

Food Groups	Production (+)	Exports (-)	Imports (+)	Seed, Feed, Other Uses (-)	Consumption (=)
Cereals	4 687	1 167	864	3 460	924
Veg.oils	134	99	172	57	150
Sugar&Sw.	772	283	376	496	369
Roots&Tub.	691	43	115	258	505
Meat	966	242	179	0	903
Milk	3 335	1 374	820	445	2 336

Time reference= <sup>99-01</sup>:1999-2001, <sup>00</sup>:2000, <sup>02</sup>:2002, <sup>00-02</sup>:2000-2002, <sup>03</sup>:2003, <sup>04</sup>:2004, <sup>ly</sup>:Latest Available Year