



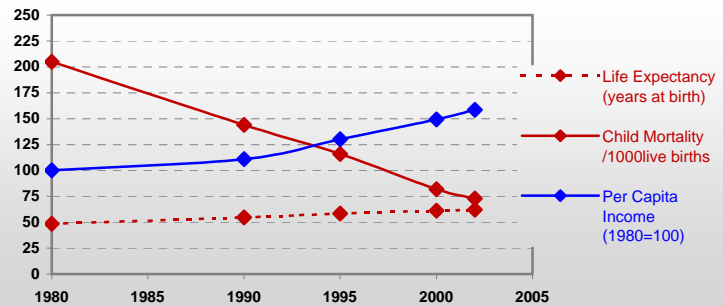
Country profiles

Bangladesh



General / Welfare

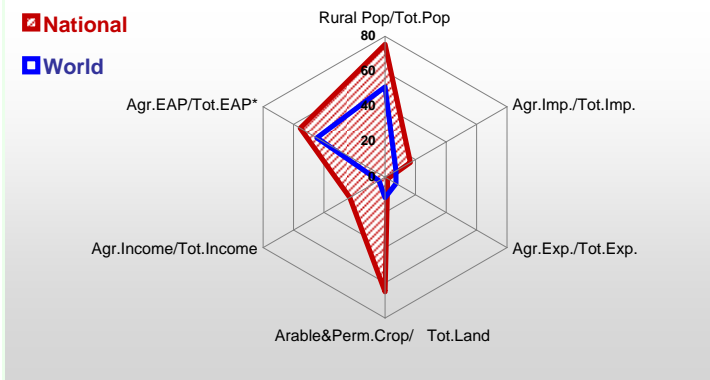
Population ^{04 *}	149 664
Per Capita Income ^{02 **}	396
Per Capita Agricultural Income ^{02**}	163
Total Exports ^{02 ****}	5 937
Total Imports ^{02 ****}	8 474
Agric. External Assistance ^{99-01 ***}	811 861
Food Consumption Inequality (G) ^{ly}	0,18
Income Inequality (G) ^{ly}	0,32
Land Inequality (G) ^{ly}	0,62
Undernourished Population % ⁰⁰⁻⁰²	30



* 1000 ** \$ *** 1000 \$ **** Million \$ --- (G) : Gini Coefficient --- Income refers to GDP at 1995 Constant Prices

Agriculture In The Economy^{ly}

Resources

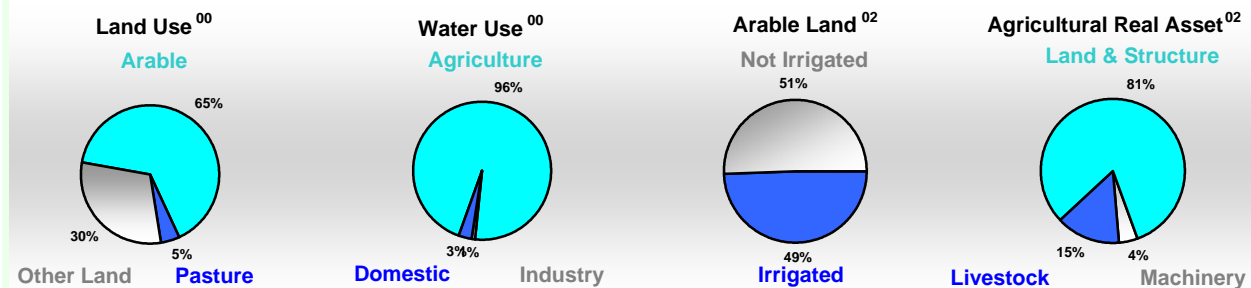


Arable Land ^{00 *}	8 134
Permanent Crops ^{00 *}	350
Pasture ^{00 *}	600
Cattle & Buffaloes ^{03 **}	25 350
Sheep & Goats ^{03 **}	35 760
Tractors ^{02 *}	1
Harvesters&Threshers ^{02 *}	-
Fertilizers Production ^{02 ***}	162 700
Fertilizers Consumption ^{02 ***}	1 423 600
Rainfall Index ^{02 (mm)}	2 278

* EAP : Economically Active Population

* 1000ha ** 1000heads *** Tonnes N,P₂O₅,K₂O

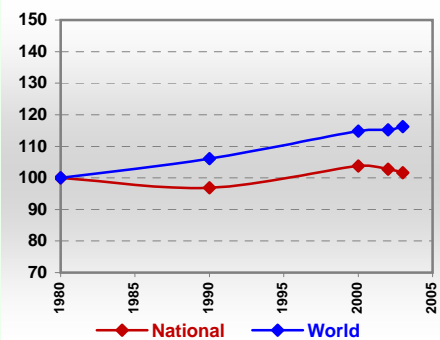
Resources Distribution



Production

Agriculture^{03 *}			
Cereals	40 667	Pulpwd.,Rnd&Split ^{**}	21
Meat	441	Roundwood ^{**}	28 338
Fruits & Vegetables	3 388	Log:Saw&Veneer ^{**}	174
Roots & Tubers	3 718	Sawnwood ^{**}	70
Pulses	345	Wood Charcoal [*]	297
Oilseeds & Nuts	148	Woodfuel ^{**}	27 763
Sugar Crops	6 838	Wood Pulp [*]	19
Tobacco	40	Wood-based Panels ^{**}	9
Fibre Crops	809	Fisheries^{02 *}	
		Pelagic	0
		Freshwater	1 562
		Demersal	-
		Molluscs	-

Per Capita Agricultural Production Index



* 1000Tonnes ** 1000m³

Time reference= ⁹⁹⁻⁰¹ :1999-2001, ⁰⁰ :2000, ⁰² :2002, ⁰⁰⁻⁰² :2000-2002, ⁰³ :2003, ⁰⁴ :2004, ^{ly} :Latest Available Year



Country profiles

Bangladesh

Trade ⁰²

Agricultural Imports *	1 404
% 4 Major Imports in Agr.Imp	35
% Agr. Imports in Tot. Imports	17
Fishery Imports *	10
Forestry Imports *	39
Agricultural Exports *	100
% 4 Major Exports in Agr.Exp.	77
% Agr. Exports in Tot.Exports	2
Fishery Exports *	305
Forestry Exports *	0



Trade Partners & Products

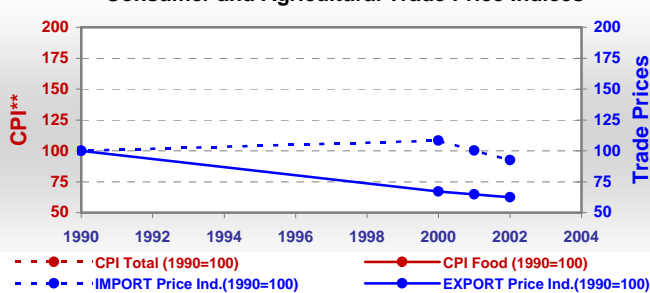
Major Import Partner			
Major Export Partner			
Major Imports	Oil of Palm	Wheat	Oil Soyabean
Major Exports	Jute	Vegetables F	Tea

* Million \$

Prices

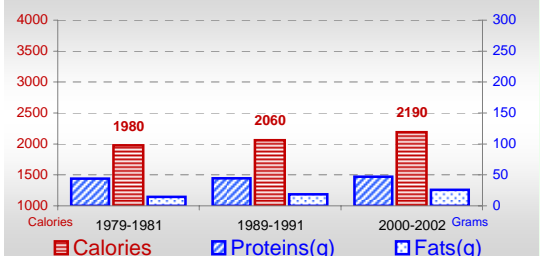
Producer Prices ⁰⁰⁻⁰²	\$*	\$ Green *
Wheat	149	209
Rice	114	160
Maize	152	213
Soybean	-	-
Coffee	-	-
Tobacco	492	691
Cow Milk	225	315
Cattle (Live Weight)	906	1 272
Pig (Live Weight)	-	-
Chicken (Live Weight)	840	1 177

Consumer and Agricultural Trade Price Indices

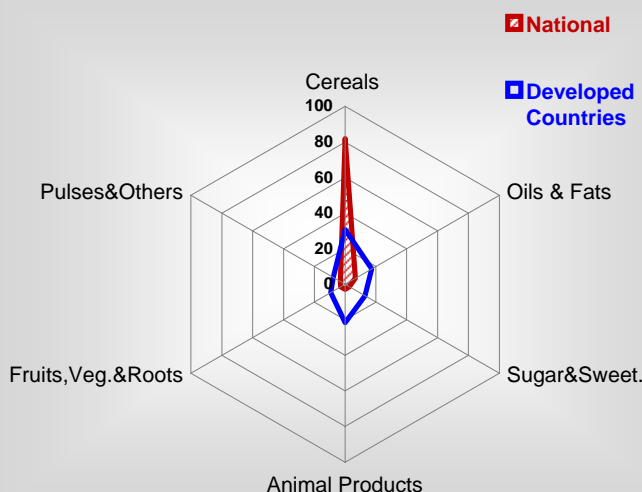


Consumption

Per Capita Daily Consumption



Source of Dietary Energy Consumption % ⁰⁰⁻⁰²



Per Capita Daily Calorie Intake From Selected Food Items ⁰⁰⁻⁰²

Rice	1577
Wheat	195
Maize	16
Sorghum	-
Potatoes	34
Cassava	-
Sugar	24
Soybean Oil	68
Palm Oil	36
Milk	24
Anim.Fats(Raw&Butter)	5
Eggs	4
Pig Meat	-
Poultry Meat	3
Bovine Meat	6
Sheep & Goats Meat	4

Food Balance ^{00-02 (1000Tonnes)}

Food Groups	Production (+)	Exports (-)	Imports (+)	Seed, Feed, Others Uses (-)	Consumption (=)
Cereals	26 623	1	2 678	3 492	25 808
Veg.oils	222	-	1 005	408	819
Sugar&Sw.	892	-	338	340	890
Roots&Tub.	3 408	1	91	642	2 856
Meat	435	-	-	0	435
Milk	2 139	-	345	535	1 949

Time reference= ⁹⁹⁻⁰¹:1999-2001, ⁰⁰:2000, ⁰²:2002, ⁰⁰⁻⁰²:2000-2002, ⁰³:2003, ⁰⁴:2004, ^{ly}:Latest Available Year