



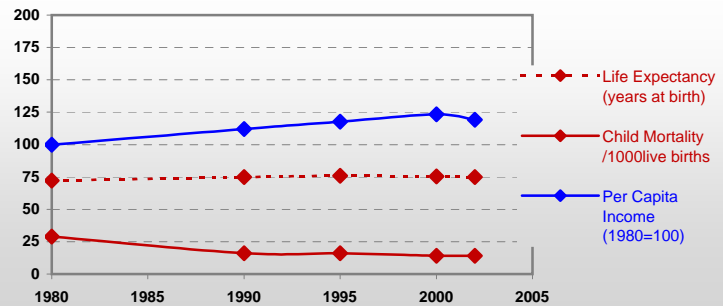
Country profiles

Barbados



General / Welfare

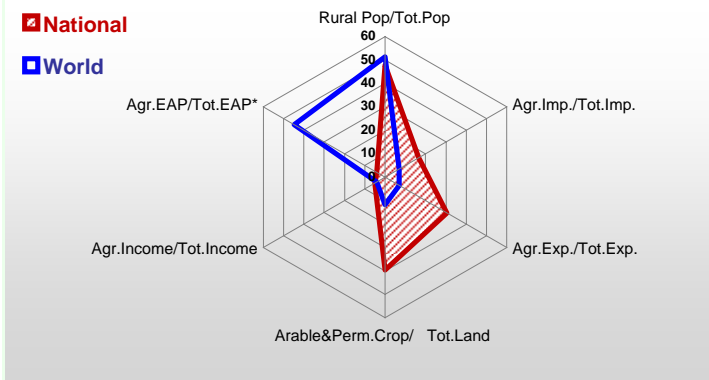
Population ^{04 *}	271
Per Capita Income ^{02 **}	7 850
Per Capita Agricultural Income ^{02**}	10 100
Total Exports ^{02 ****}	241
Total Imports ^{02 ****}	1 071
Agric. External Assistance ^{99-01 ***}	2 524
Food Consumption Inequality (G) ^{ly}	0,12
Income Inequality (G) ^{ly}	0,49
Land Inequality (G) ^{ly}	0,94
Undernourished Population % ⁰⁰⁻⁰²	-



*1000 ** \$ *** 1000 \$ **** Million \$ --- (G) : Gini Coefficient --- Income refers to GDP at 1995 Constant Prices

Agriculture In The Economy^{ly}

Resources

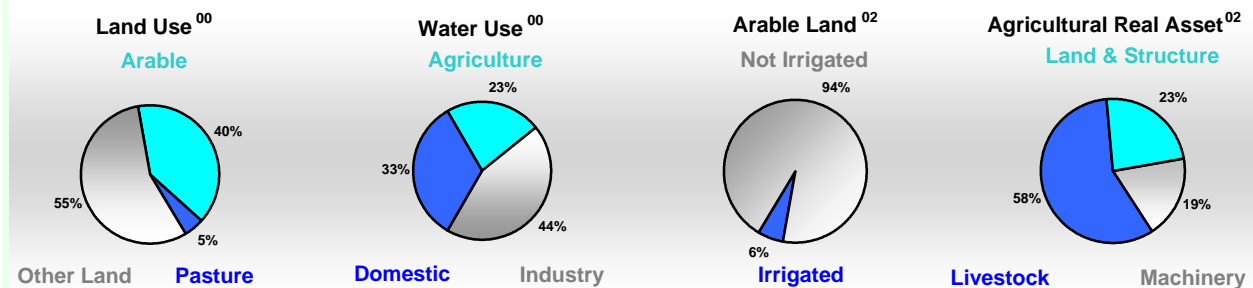


Arable Land ^{00 *}	16
Permanent Crops ^{00 *}	1
Pasture ^{00 *}	2
Cattle & Buffaloes ^{03 **}	14
Sheep & Goats ^{03 **}	32
Tractors ^{02 *}	37
Harvesters&Threshers ^{02 *}	-
Fertilizers Production ^{02 ***}	-
Fertilizers Consumption ^{02 ***}	811
Rainfall Index ^{02 (mm)}	-

* EAP : Economically Active Population

* 1000ha ** 1000heads *** Tonnes N,P₂O₅,K₂O

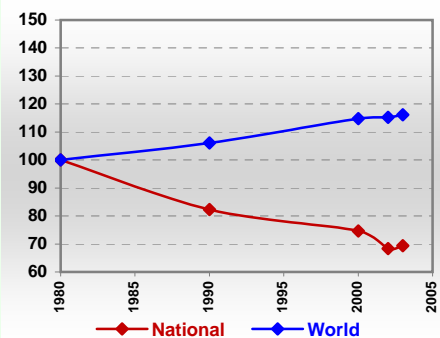
Resources Distribution



Production

Agriculture^{03 *}	Pulpwd.,Rnd&Split ^{**}	-	
Cereals	0	Roundwood ^{**}	5
Meat	14	Log:Saw&Veneer ^{**}	5
Fruits & Vegetables	17	Sawnwood ^{**}	-
Roots & Tubers	4	Wood Charcoal [*]	-
Pulses	1	Woodfuel ^{**}	-
Oilseeds & Nuts	0	Wood Pulp [*]	-
Sugar Crops	365	Wood-based Panels ^{**}	-
Tobacco	-	Fisheries^{02 *}	-
Fibre Crops	-	Pelagic	2
		Freshwater	-
Forestry⁰²		Demersal	0
Indust.Roundwood ^{**}	5	Molluscs	-
Paper, Paperboard [*]	-		-

Per Capita Agricultural Production Index



* 1000Tonnes ** 1000m³

Time reference= ⁹⁹⁻⁰¹:1999-2001, ⁰⁰:2000, ⁰²:2002, ⁰⁰⁻⁰²:2000-2002, ⁰³:2003, ⁰⁴:2004, ^{ly}:Latest Available Year



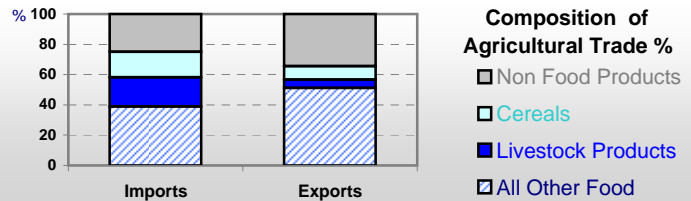
Country profiles

Barbados

Trade ⁰²

Agricultural Imports *	176
% 4 Major Imports in Agr.Imp	15
% Agr. Imports in Tot. Imports	16
Fishery Imports *	13
Forestry Imports *	27
Agricultural Exports *	73
% 4 Major Exports in Agr.Exp.	60
% Agr. Exports in Tot.Exports	30
Fishery Exports *	1
Forestry Exports *	0

* Million \$



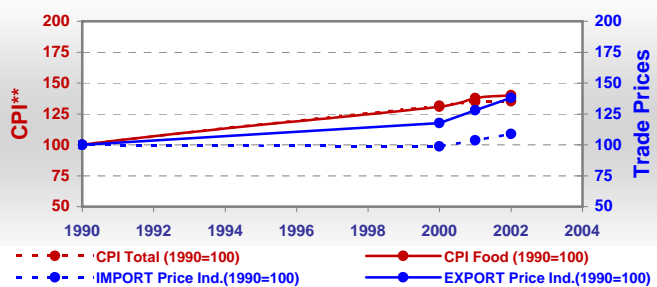
Trade Partners & Products

Major Import Partner	USA	Trinidad Tbg	UK
Major Export Partner	UK	USA	Trinidad Tbg
Major Imports	Food Prep	Bev Non-Alc	Bev Dis Alc
Major Exports	Bev Dis Alc	Sugar,C. Raw	Food Prep

Prices

Producer Prices ⁰⁰⁻⁰²	\$*	\$ Green *
Wheat	-	-
Rice	-	-
Maize	-	748
Soybean	-	-
Coffee	-	-
Tobacco	-	-
Cow Milk	1 000	337
Cattle (Live Weight)	2 008	677
Pig (Live Weight)	2 399	808
Chicken (Live Weight)	1 643	554

Consumer and Agricultural Trade Price Indices

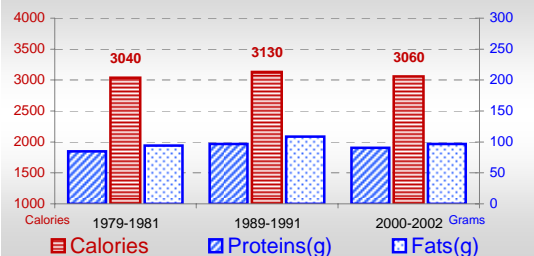


* per Tonne

** CPI : Consumer Price Index

Consumption

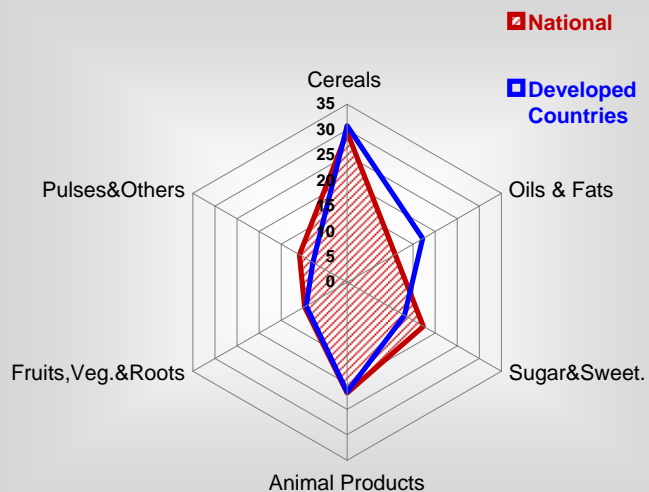
Per Capita Daily Consumption



Per Capita Daily Calorie Intake From Selected Food Items ⁰⁰⁻⁰²

Rice	186
Wheat	568
Maize	121
Sorghum	-
Potatoes	70
Cassava	7
Sugar	516
Soybean Oil	127
Palm Oil	-
Milk	179
Anim.Fats(Raw&Butter)	83
Eggs	9
Pig Meat	83
Poultry Meat	199
Bovine Meat	68
Sheep & Goats Meat	41

Source of Dietary Energy Consumption % ⁰⁰⁻⁰²



Food Balance ⁰⁰⁻⁰² (1000Tonnes)

Food Groups	Production (+)	Exports (-)	Imports (+)	Seed, Feed, Other Uses (-)	Consumption (=)
Cereals	2	7	71	38	28
Veg.oils	4	3	5	3	3
Sugar&Sw.	52	48	14	3	15
Roots&Tub.	8	0	13	2	18
Meat	17	1	10	3	23
Milk	8	-	29	10	27

Time reference= ⁹⁹⁻⁰¹:1999-2001, ⁰⁰:2000, ⁰²:2002, ⁰⁰⁻⁰²:2000-2002, ⁰³:2003, ⁰⁴:2004, ^{ly}:Latest Available Year