



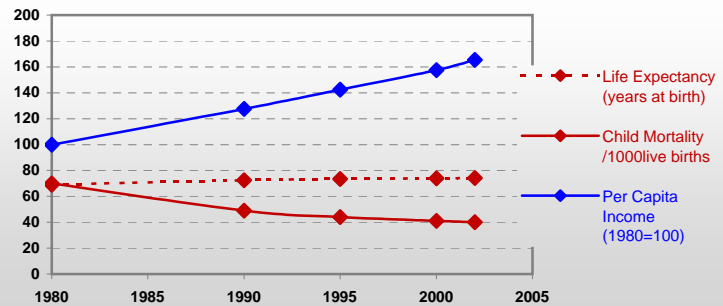
Country profiles

Belize



General / Welfare

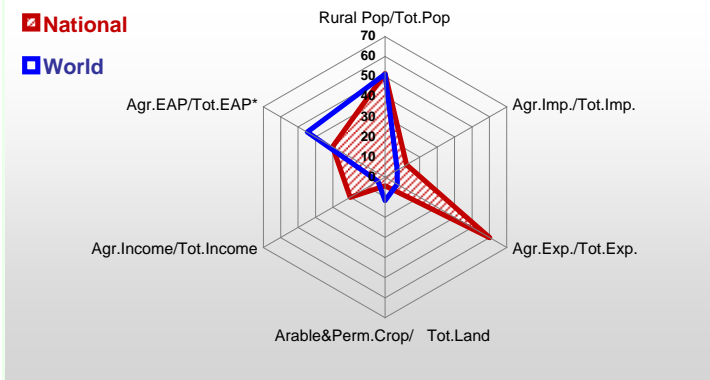
Population ^{04 *}	261
Per Capita Income ^{02 **}	3 231
Per Capita Agricultural Income ^{02**}	2 213
Total Exports ^{02 ****}	169
Total Imports ^{02 ****}	527
Agric. External Assistance ^{99-01 ***}	3 718
Food Consumption Inequality (G) ^{ly}	0,14
Income Inequality (G) ^{ly}	-
Land Inequality (G) ^{ly}	-
Undernourished Population % ⁰⁰⁻⁰²	-



*1000 ** \$ *** 1000 \$ **** Million \$ --- (G) : Gini Coefficient --- Income refers to GDP at 1995 Constant Prices

Agriculture In The Economy^{ly}

Resources

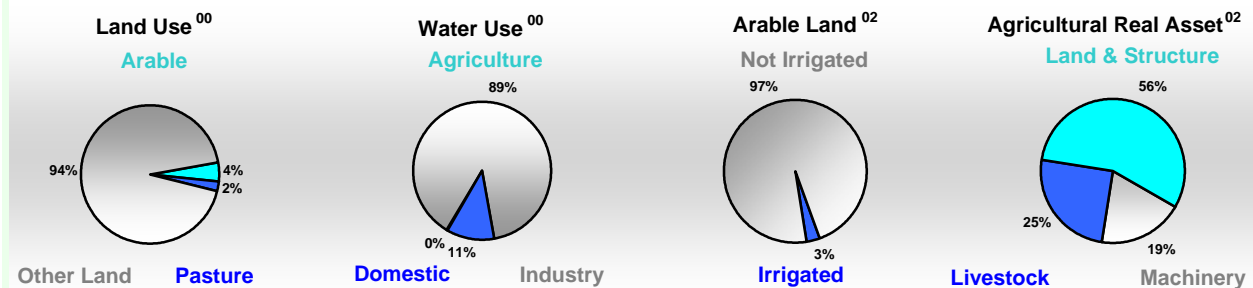


Arable Land ^{00 *}	64
Permanent Crops ^{00 *}	35
Pasture ^{00 *}	50
Cattle & Buffaloes ^{03 **}	58
Sheep & Goats ^{03 **}	5
Tractors ^{02 *}	16
Harvesters&Threshers ^{02 *}	1
Fertilizers Production ^{02 ***}	-
Fertilizers Consumption ^{02 ***}	4 700
Rainfall Index ^{02 (mm)}	1 655

* EAP : Economically Active Population

* 1000ha ** 1000heads *** Tonnes N,P₂O₅,K₂O

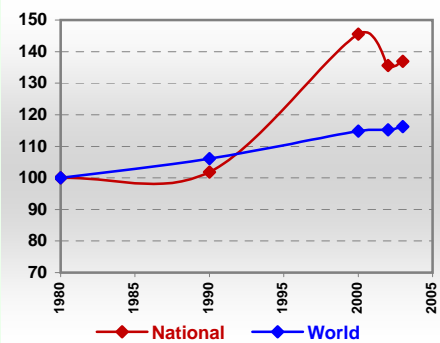
Resources Distribution



Production

Agriculture^{03 *}		
Cereals	56	Pulpwd.,Rnd&Split ^{**}
Meat	17	Roundwood ^{**}
Fruits & Vegetables	336	Log:Saw&Veneer ^{**}
Roots & Tubers	4	Sawnwood ^{**}
Pulses	8	Wood Charcoal [*]
Oilseeds & Nuts	1	Woodfuel ^{**}
Sugar Crops	1 073	Wood Pulp [*]
Tobacco	-	Wood-based Panels ^{**}
Fibre Crops	-	
Forestry⁰²		Fisheries^{02 *}
Indust.Roundwood ^{**}	62	Pelagic
Paper, Paperboard [*]	-	Freshwater
		Demersal
		Molluscs

Per Capita Agricultural Production Index



* 1000Tonnes ** 1000m³

Time reference= ⁹⁹⁻⁰¹ :1999-2001, ⁰⁰ :2000, ⁰² :2002, ⁰⁰⁻⁰² :2000-2002, ⁰³ :2003, ⁰⁴ :2004, ^{ly} :Latest Available Year



Country profiles

Belize

Trade ⁰²

Agricultural Imports *	64
% 4 Major Imports in Agr.Imp	16
% Agr. Imports in Tot. Imports	12
Fishery Imports *	2
Forestry Imports *	3
Agricultural Exports *	108
% 4 Major Exports in Agr.Exp.	71
% Agr. Exports in Tot.Exports	60
Fishery Exports *	10
Forestry Exports *	2



Trade Partners & Products

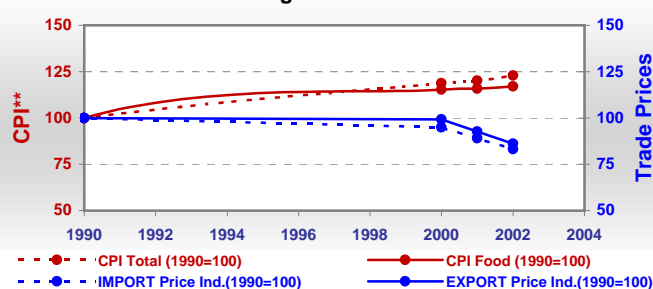
Major Import Partner			
Major Export Partner			
Major Imports	Bev Dis Alc	Food Prep	Com Feed Oth
Major Exports	Sugar,C. Raw	Oranj Conc	Bananas

* Million \$

Prices

Producer Prices ⁰⁰⁻⁰²	\$*	\$ Green *
Wheat	-	-
Rice	224	229
Maize	172	176
Soybean	-	-
Coffee	-	-
Tobacco	-	-
Cow Milk	320	327
Cattle (Live Weight)	1 133	1 160
Pig (Live Weight)	1 297	1 327
Chicken (Live Weight)	873	894

Consumer and Agricultural Trade Price Indices

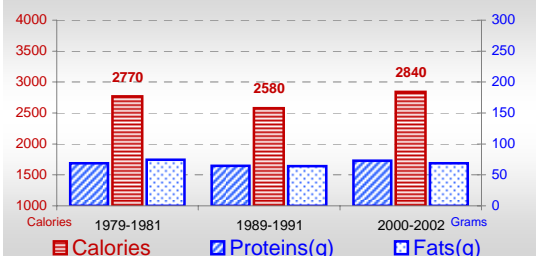


* per Tonne

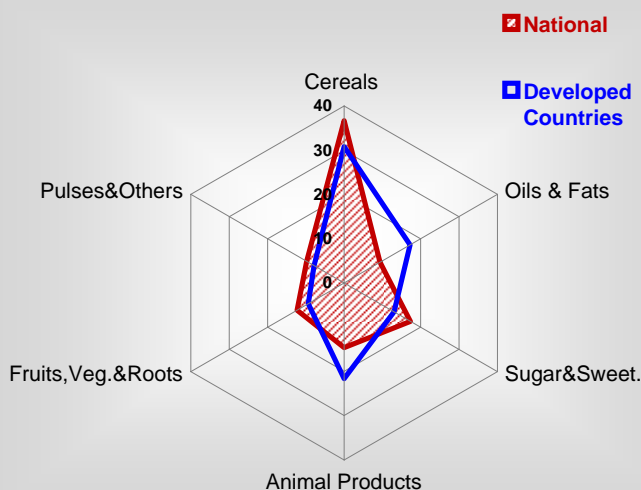
** CPI : Consumer Price Index

Consumption

Per Capita Daily Consumption



Source of Dietary Energy Consumption % ⁰⁰⁻⁰²



Per Capita Daily Calorie Intake From Selected Food Items ⁰⁰⁻⁰²

Rice	280
Wheat	556
Maize	167
Sorghum	29
Potatoes	23
Cassava	23
Sugar	483
Soybean Oil	12
Palm Oil	16
Milk	153
Anim.Fats(Raw&Butter)	166
Eggs	19
Pig Meat	56
Poultry Meat	120
Bovine Meat	35
Sheep & Goats Meat	-

Food Balance ⁰⁰⁻⁰² (1000Tonnes)

Food Groups	Production (+)	Exports (-)	Imports (+)	Seed, Feed, Other Uses (-)	Consumption (=)
Cereals	50	1	26	44	31
Veg.oils	-	-	2	1	1
Sugar&Sw.	115	102	1	1	13
Roots&Tub.	4	0	2	0	6
Meat	13	-	2	4	11
Milk	2	-	20	2	20

Time reference= ⁹⁹⁻⁰¹:1999-2001, ⁰⁰:2000, ⁰²:2002, ⁰⁰⁻⁰²:2000-2002, ⁰³:2003, ⁰⁴:2004, ^{ly}:Latest Available Year