



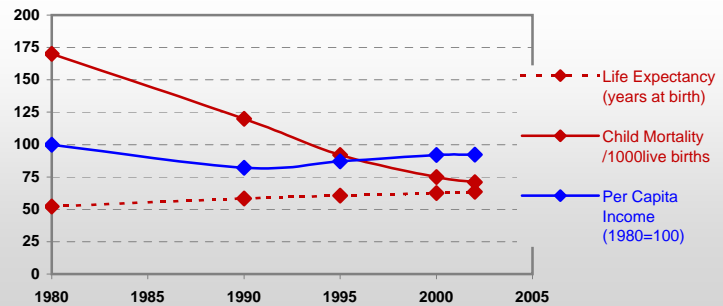
Country profiles

Bolivia



General / Welfare

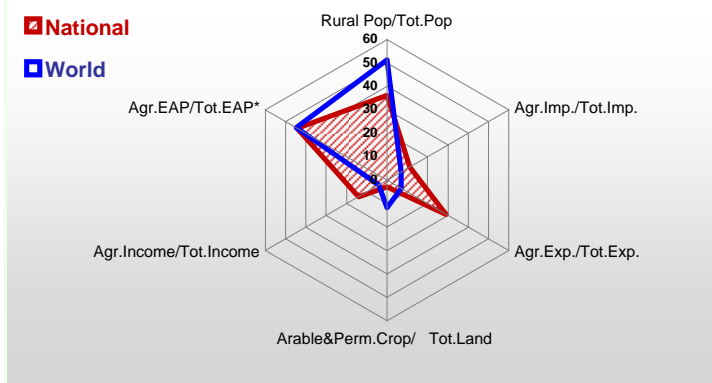
Population ^{04 *}	8 973
Per Capita Income ^{02 **}	940
Per Capita Agricultural Income ^{02**}	319
Total Exports ^{02 ****}	1 299
Total Imports ^{02 ****}	1 775
Agric. External Assistance ^{99-01 ***}	297 959
Food Consumption Inequality (G) ^{ly}	0,14
Income Inequality (G) ^{ly}	0,45
Land Inequality (G) ^{ly}	-
Undernourished Population % ⁰⁰⁻⁰²	21



*1000 ** \$ *** 1000 \$ **** Million \$ --- (G) : Gini Coefficient --- Income refers to GDP at 1995 Constant Prices

Agriculture In The Economy^{ly}

Resources

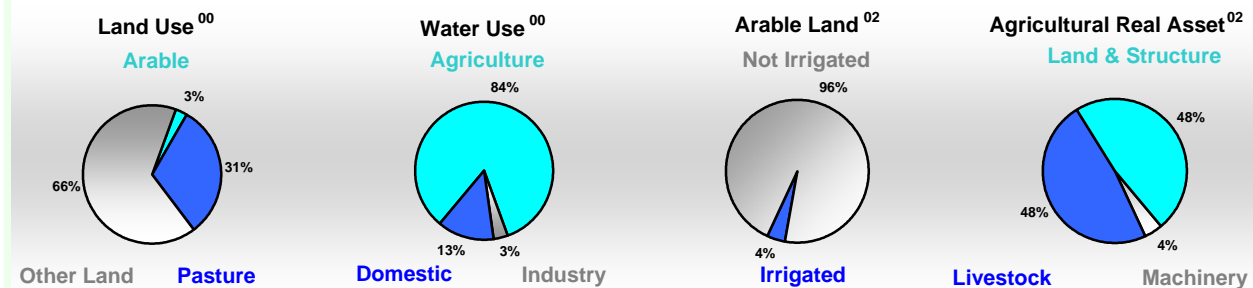


Arable Land ^{00 *}	2 928
Permanent Crops ^{00 *}	203
Pasture ^{00 *}	33 831
Cattle & Buffaloes ^{03 **}	6 680
Sheep & Goats ^{03 **}	10 097
Tractors ^{02 *}	2
Harvesters&Threshers ^{02 *}	0
Fertilizers Production ^{02 ***}	-
Fertilizers Consumption ^{02 ***}	13 741
Rainfall Index ^{02 (mm)}	1 507

* EAP : Economically Active Population

* 1000ha ** 1000heads *** Tonnes N,P₂O₅,K₂O

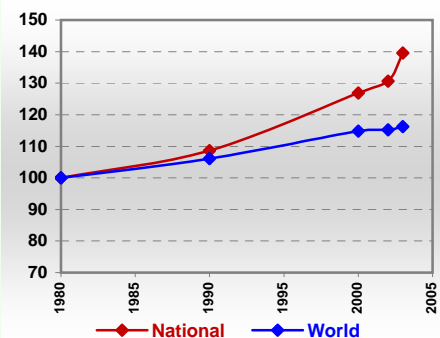
Resources Distribution



Production

Agriculture^{03 *}		
Cereals	1 486	Pulpwd.,Rnd&Split ^{**}
Meat	440	Roundwood ^{**}
Fruits & Vegetables	1 840	Log:Saw&Veneer ^{**}
Roots & Tubers	1 288	Sawnwood ^{**}
Pulses	51	Wood Charcoal [*]
Oilseeds & Nuts	438	Woodfuel ^{**}
Sugar Crops	4 872	Wood Pulp [*]
Tobacco	1	Wood-based Panels ^{**}
Fibre Crops	26	
Forestry⁰²		Fisheries^{02 *}
Indust.Roundwood ^{**}	8 054	Pelagic
Paper, Paperboard [*]	-	Freshwater
		Demersal
		Molluscs

Per Capita Agricultural Production Index



* 1000Tonnes ** 1000m³

Time reference= ⁹⁹⁻⁰¹:1999-2001, ⁰⁰:2000, ⁰²:2002, ⁰⁰⁻⁰²:2000-2002, ⁰³:2003, ⁰⁴:2004, ^{ly}:Latest Available Year

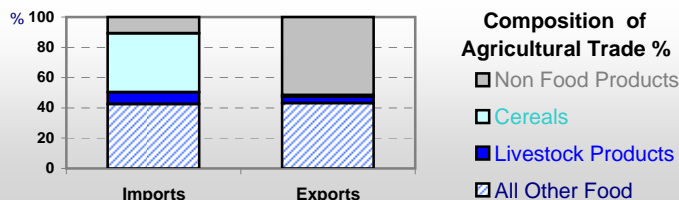


Country profiles

Bolivia

Trade ⁰²

Agricultural Imports *	196
% 4 Major Imports in Agr.Imp	31
% Agr. Imports in Tot. Imports	11
Fishery Imports *	5
Forestry Imports *	35
Agricultural Exports *	383
% 4 Major Exports in Agr.Exp.	6
% Agr. Exports in Tot.Exports	29
Fishery Exports *	0
Forestry Exports *	24



Trade Partners & Products

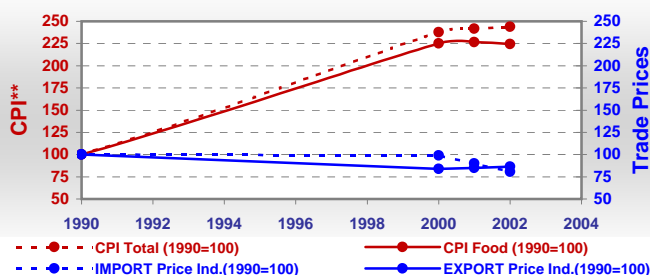
Major Import Partner			
Major Export Partner			
Major Imports	Soybeans	Wheat	Flour Wheat
Major Exports	Cake Soybean	Oil Soybean	Brazilnut Sh

* Million \$

Prices

Producer Prices ⁰⁰⁻⁰²	\$*	\$ Green *
Wheat	183	253
Rice	153	211
Maize	162	224
Soybean	139	192
Coffee	864	1 194
Tobacco	1 119	1 546
Cow Milk	145	200
Cattle (Live Weight)	490	676
Pig (Live Weight)	720	995
Chicken (Live Weight)	688	950

Consumer and Agricultural Trade Price Indices

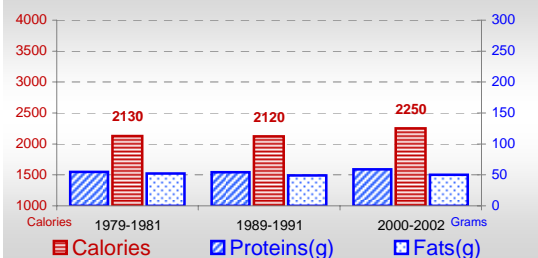


* per Tonne

** CPI : Consumer Price Index

Consumption

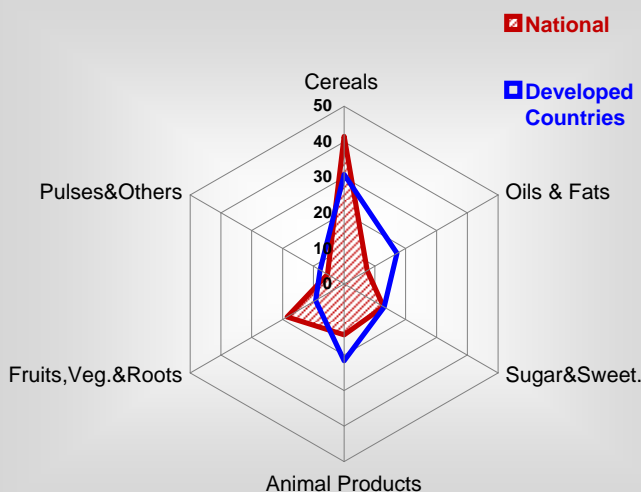
Per Capita Daily Consumption



Per Capita Daily Calorie Intake From Selected Food Items ⁰⁰⁻⁰²

Rice	209
Wheat	348
Maize	347
Sorghum	-
Potatoes	122
Cassava	47
Sugar	286
Soybean Oil	59
Palm Oil	-
Milk	49
Anim.Fats(Raw&Butter)	31
Eggs	12
Pig Meat	46
Poultry Meat	68
Bovine Meat	113
Sheep & Goats Meat	14

Source of Dietary Energy Consumption % ⁰⁰⁻⁰²



Food Balance ⁰⁰⁻⁰² (1000Tonnes)

Food Groups	Production (+)	Exports (-)	Imports (+)	Seed, Feed, Others Uses (-)	Consumption (=)
Cereals	1 175	13	491	651	1 002
Veg.oils	234	197	8	-3	48
Sugar&Sw.	370	38	11	96	247
Roots&Tub.	1 462	0	7	659	810
Meat	417	1	2	0	418
Milk	271	32	73	23	289

Time reference= ⁹⁹⁻⁰¹:1999-2001, ⁰⁰:2000, ⁰²:2002, ⁰⁰⁻⁰²:2000-2002, ⁰³:2003, ⁰⁴:2004, ^{ly}:Latest Available Year