



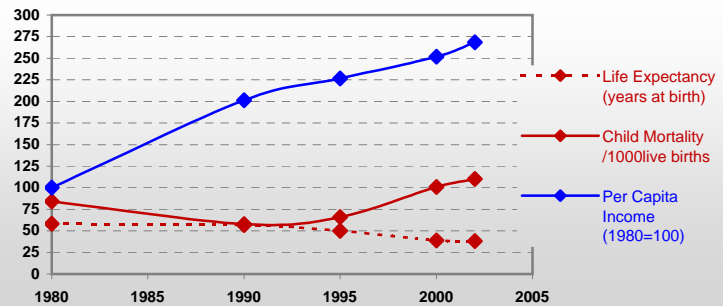
# Country profiles

## Botswana



### General / Welfare

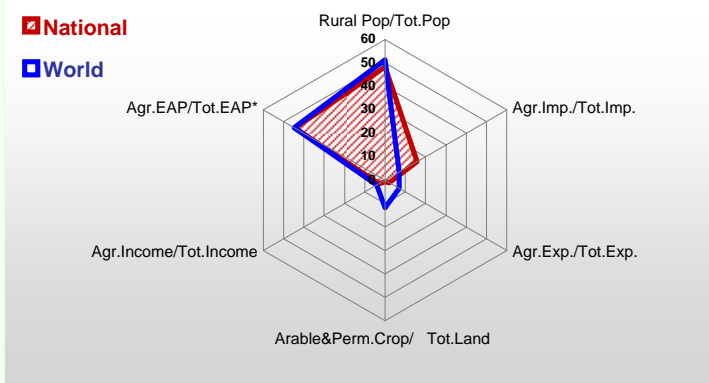
Population <sup>04 *</sup>	1 795
Per Capita Income <sup>02 **</sup>	4 102
Per Capita Agricultural Income <sup>02**</sup>	226
Total Exports <sup>02 ****</sup>	2 333
Total Imports <sup>02 ****</sup>	1 652
Agric. External Assistance <sup>99-01 ***</sup>	15 845
Food Consumption Inequality (G) <sup>ly</sup>	0,14
Income Inequality (G) <sup>ly</sup>	0,63
Land Inequality (G) <sup>ly</sup>	-
Undernourished Population % <sup>00-02</sup>	32



\*1000 \*\* \$ \*\*\* 1000 \$ \*\*\*\* Million \$ --- (G) : Gini Coefficient --- Income refers to GDP at 1995 Constant Prices

### Agriculture In The Economy<sup>ly</sup>

### Resources

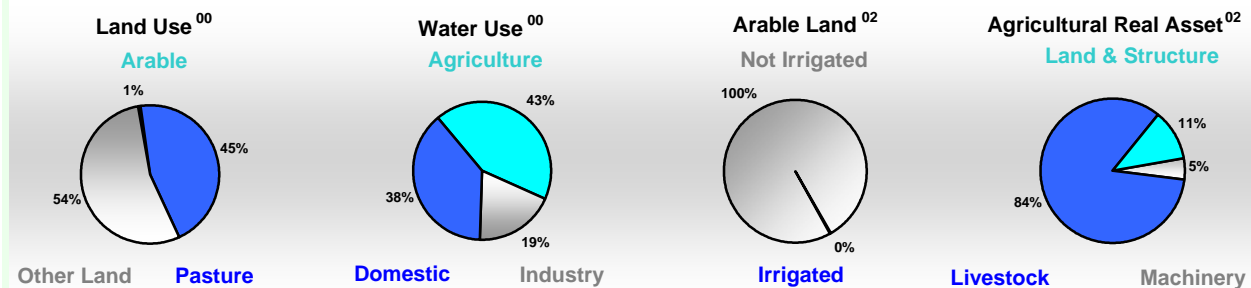


Arable Land <sup>00 *</sup>	370
Permanent Crops <sup>00 *</sup>	3
Pasture <sup>00 *</sup>	25 600
Cattle & Buffaloes <sup>03 **</sup>	1 700
Sheep & Goats <sup>03 **</sup>	2 650
Tractors <sup>02 *</sup>	16
Harvesters&Threshers <sup>02 *</sup>	0
Fertilizers Production <sup>02 ***</sup>	-
Fertilizers Consumption <sup>02 ***</sup>	4 600
Rainfall Index <sup>02 (mm)</sup>	389

\* EAP : Economically Active Population

\* 1000ha \*\* 1000heads \*\*\* Tonnes N,P<sub>2</sub>O<sub>5</sub>,K<sub>2</sub>O

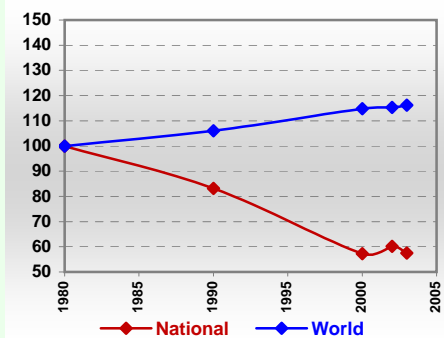
### Resources Distribution



### Production

<b>Agriculture<sup>03 *</sup></b>	Cereals	44	Pulpwd.,Rnd&Split <sup>**</sup>	-
	Meat	57	Roundwood <sup>**</sup>	750
	Fruits & Vegetables	27	Log:Saw&Veneer <sup>**</sup>	-
	Roots & Tubers	93	Sawnwood <sup>**</sup>	-
	Pulses	18	Wood Charcoal <sup>*</sup>	62
	Oilseeds & Nuts	3	Woodfuel <sup>**</sup>	645
	Sugar Crops	-	Wood Pulp <sup>*</sup>	-
	Tobacco	-	Wood-based Panels <sup>**</sup>	-
	Fibre Crops	1	<b>Fisheries<sup>02 *</sup></b>	
<b>Forestry<sup>02</sup></b>	Indust.Roundwood <sup>**</sup>	105	Pelagic	-
	Paper, Paperboard <sup>*</sup>	-	Freshwater	0
			Demersal	-
			Molluscs	-

### Per Capita Agricultural Production Index



\* 1000Tonnes \*\* 1000m<sup>3</sup>

Time reference= <sup>99-01</sup>:1999-2001, <sup>00</sup>:2000, <sup>02</sup>:2002, <sup>00-02</sup>:2000-2002, <sup>03</sup>:2003, <sup>04</sup>:2004, <sup>ly</sup>:Latest Available Year



# Country profiles

## Botswana

### Trade <sup>02</sup>

Agricultural Imports *	272
% 4 Major Imports in Agr.Imp	9
% Agr. Imports in Tot. Imports	16
Fishery Imports *	5
Forestry Imports *	15
Agricultural Exports *	49
% 4 Major Exports in Agr.Exp.	67
% Agr. Exports in Tot.Exports	2
Fishery Exports *	0
Forestry Exports *	-



### Trade Partners & Products

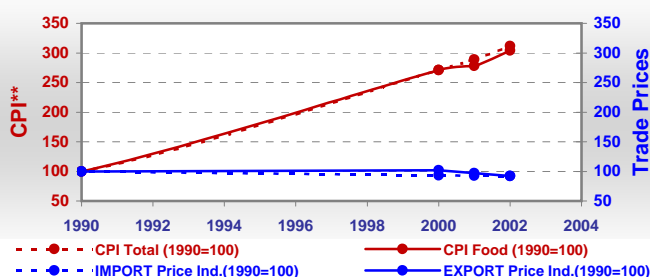
Major Import Partner			
Major Export Partner			
Major Imports	Food Prep	Sugar,C. Raw	Mil Rice
Major Exports	Beef Bonless	Beef Veal	Skin W Calve

\* Million \$

### Prices

Producer Prices <sup>00-02</sup>	\$*	\$ Green *
Wheat	-	-
Rice	-	-
Maize	-	-
Soybean	-	-
Coffee	-	-
Tobacco	-	-
Cow Milk	-	-
Cattle (Live Weight)	-	-
Pig (Live Weight)	-	-
Chicken (Live Weight)	-	-

### Consumer and Agricultural Trade Price Indices

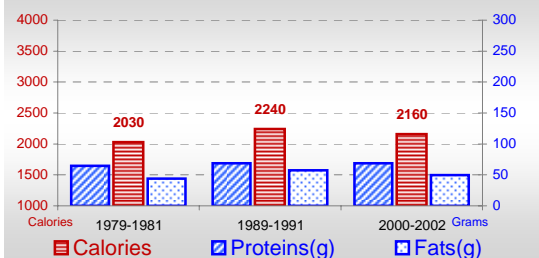


\* per Tonne

\*\* CPI : Consumer Price Index

### Consumption

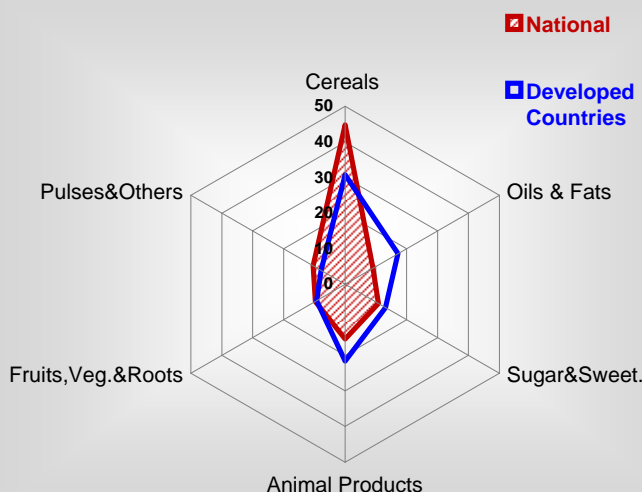
#### Per Capita Daily Consumption



#### Per Capita Daily Calorie Intake From Selected Food Items <sup>00-02</sup>

Rice	87
Wheat	283
Maize	368
Sorghum	212
Potatoes	20
Cassava	-
Sugar	208
Soybean Oil	29
Palm Oil	2
Milk	216
Anim.Fats(Raw&Butter)	30
Eggs	7
Pig Meat	9
Poultry Meat	18
Bovine Meat	28
Sheep & Goats Meat	18

#### Source of Dietary Energy Consumption % <sup>00-02</sup>



### Food Balance <sup>00-02</sup> (1000Tonnes)

Food Groups	Production (+)	Exports (-)	Imports (+)	Seed, Feed, Others Uses (-)	Consumption (=)
Cereals	25	15	193	8	195
Veg.oils	1	1	14	3	11
Sugar&Sw.	-	2	54	9	43
Roots&Tub.	91	1	31	22	99
Meat	60	22	3	-3	44
Milk	105	1	187	42	249

Time reference= <sup>99-01</sup>:1999-2001, <sup>00</sup>:2000, <sup>02</sup>:2002, <sup>00-02</sup>:2000-2002, <sup>03</sup>:2003, <sup>04</sup>:2004, <sup>ly</sup>:Latest Available Year