



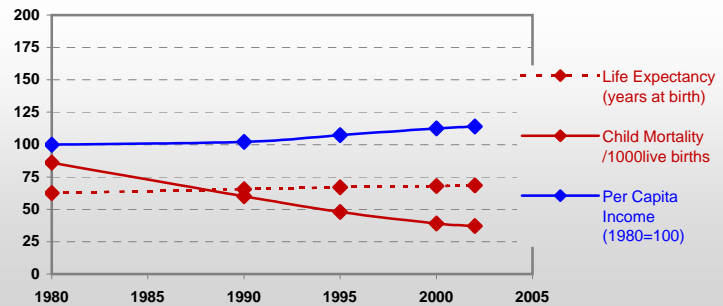
Country profiles

Brazil



General / Welfare

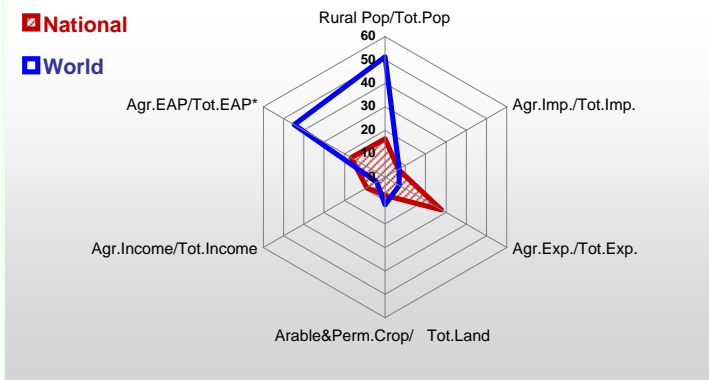
Population ^{04 *}	180 654
Per Capita Income ^{02 **}	4 642
Per Capita Agricultural Income ^{02**}	2 574
Total Exports ^{02 ****}	60 362
Total Imports ^{02 ****}	49 603
Agric. External Assistance ^{99-01 ***}	970 387
Food Consumption Inequality (G) ^{ly}	0,17
Income Inequality (G) ^{ly}	0,59
Land Inequality (G) ^{ly}	0,85
Undernourished Population % ⁰⁰⁻⁰²	9



*1000 ** \$ *** 1000 \$ **** Million \$ --- (G) : Gini Coefficient --- Income refers to GDP at 1995 Constant Prices

Agriculture In The Economy^{ly}

Resources

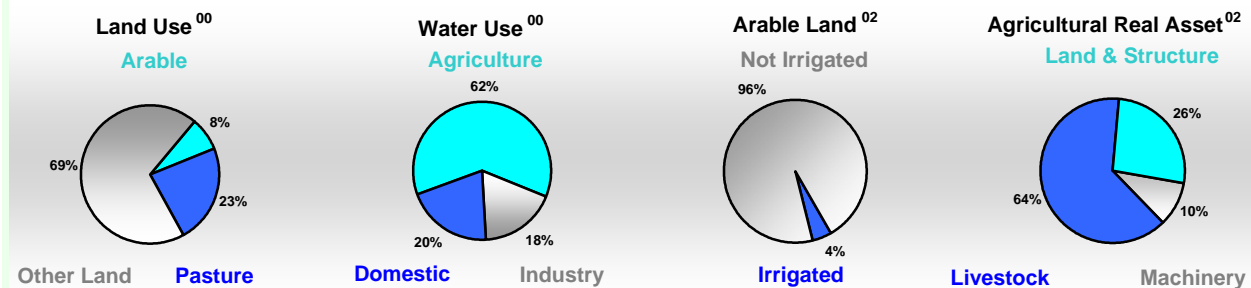


Arable Land ^{00 *}	57 640
Permanent Crops ^{00 *}	7 560
Pasture ^{00 *}	196 206
Cattle & Buffaloes ^{03 **}	190 713
Sheep & Goats ^{03 **}	23 269
Tractors ^{02 *}	14
Harvesters&Threshers ^{02 *}	1
Fertilizers Production ^{02 ***}	2 608 732
Fertilizers Consumption ^{02 ***}	7 682 000
Rainfall Index ^{02 (mm)}	1 940

* EAP : Economically Active Population

* 1000ha ** 1000heads *** Tonnes N,P₂O₅,K₂O

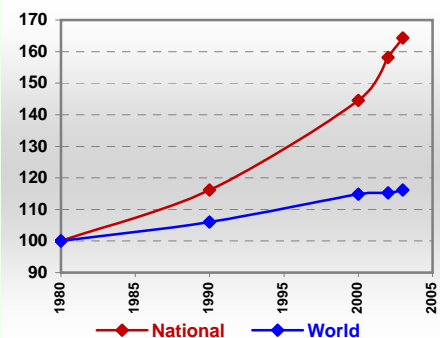
Resources Distribution



Production

Agriculture^{03 *}		
Cereals	66 895	Pulpwd.,Rnd&Split ^{**}
Meat	18 389	Roundwood ^{**}
Fruits & Vegetables	42 333	Log:Saw&Veneer ^{**}
Roots & Tubers	25 919	Sawnwood ^{**}
Pulses	3 328	Wood Charcoal [*]
Oilseeds & Nuts	10 443	Woodfuel ^{**}
Sugar Crops	389 849	Wood Pulp [*]
Tobacco	656	Wood-based Panels ^{**}
Fibre Crops	1 030	
Forestry⁰²		Fisheries^{02 *}
Indust.Roundwood ^{**}	102 994	Pelagic
Paper, Paperboard [*]	7 354	Freshwater
		Demersal
		Molluscs

Per Capita Agricultural Production Index



* 1000Tonnes ** 1000m³

Time reference= ⁹⁹⁻⁰¹:1999-2001, ⁰⁰:2000, ⁰²:2002, ⁰⁰⁻⁰²:2000-2002, ⁰³:2003, ⁰⁴:2004, ^{ly}:Latest Available Year

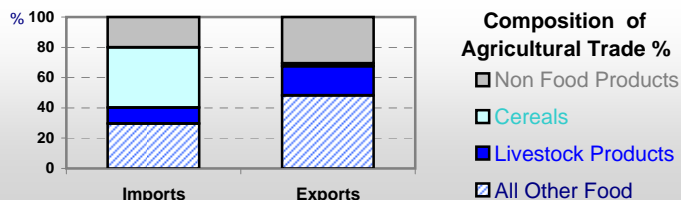


Country profiles

Brazil

Trade ⁰²

Agricultural Imports *	3 238
% 4 Major Imports in Agr.Imp	30
% Agr. Imports in Tot. Imports	7
Fishery Imports *	222
Forestry Imports *	728
Agricultural Exports *	16 725
% 4 Major Exports in Agr.Exp.	21
% Agr. Exports in Tot.Exports	28
Fishery Exports *	344
Forestry Exports *	2 629



Trade Partners & Products

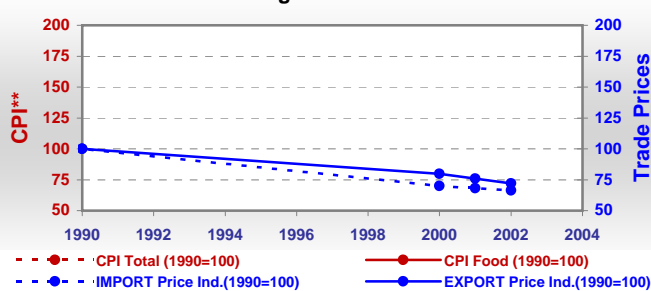
Major Import Partner	Argentina	Paraguay	USA
Major Export Partner	Netherlands	Russian Fed	USA
Major Imports	Wheat	Soybeans	Malt Barley
Major Exports	Soybeans	Cake Soybean	Chicken Meat

* Million \$

Prices

Producer Prices ⁰⁰⁻⁰²	\$*	\$ Green *
Wheat	104	186
Rice	118	210
Maize	77	134
Soybean	142	256
Coffee	441	751
Tobacco	921	1 664
Cow Milk	132	232
Cattle (Live Weight)	608	1 083
Pig (Live Weight)	441	782
Chicken (Live Weight)	460	815

Consumer and Agricultural Trade Price Indices

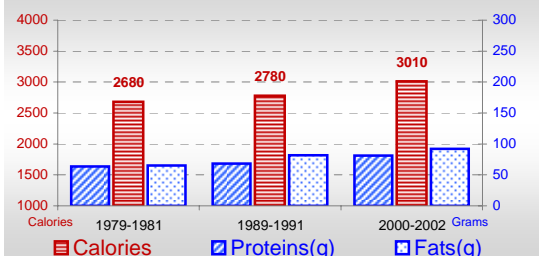


* per Tonne

** CPI : Consumer Price Index

Consumption

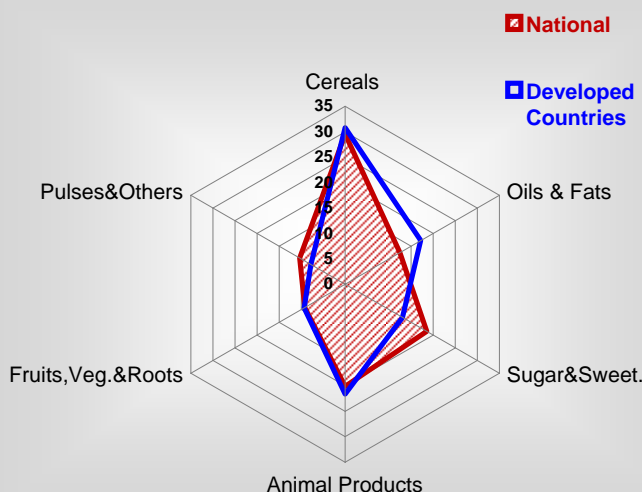
Per Capita Daily Consumption



Per Capita Daily Calorie Intake From Selected Food Items ⁰⁰⁻⁰²

Rice	372
Wheat	345
Maize	161
Sorghum	-
Potatoes	27
Cassava	105
Sugar	537
Soybean Oil	258
Palm Oil	15
Milk	193
Anim.Fats(Raw&Butter)	55
Eggs	26
Pig Meat	98
Poultry Meat	129
Bovine Meat	134
Sheep & Goats Meat	4

Source of Dietary Energy Consumption % ⁰⁰⁻⁰²



Food Balance ⁰⁰⁻⁰² (1000Tonnes)

Food Groups	Production (+)	Exports (-)	Imports (+)	Seed, Feed, Others Uses (-)	Consumption (=)
Cereals	47 776	429	9 870	38 926	18 291
Veg.oils	5 117	1 707	267	1 393	2 284
Sugar&Sw.	20 795	10 822	30	75	9 928
Roots&Tub.	26 559	88	193	16 002	10 661
Meat	16 354	2 487	62	-2	13 931
Milk	21 421	82	1 129	2 502	19 966

Time reference= ⁹⁹⁻⁰¹:1999-2001, ⁰⁰:2000, ⁰²:2002, ⁰⁰⁻⁰²:2000-2002, ⁰³:2003, ⁰⁴:2004, ^{ly}:Latest Available Year