



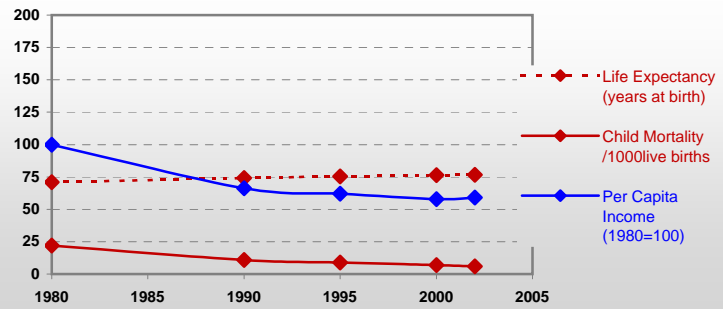
Country profiles

Brunei



General / Welfare

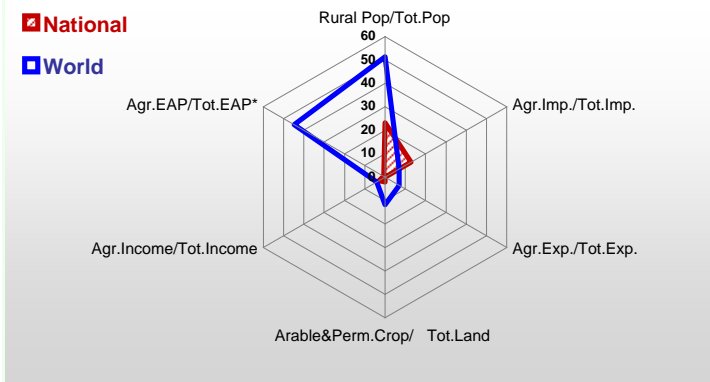
Population ^{04 *}	366
Per Capita Income ^{02 **}	16 752
Per Capita Agricultural Income ^{02**}	93 500
Total Exports ^{02 ****}	3 380
Total Imports ^{02 ****}	1 612
Agric. External Assistance ^{99-01 ***}	30
Food Consumption Inequality (G) ^{ly}	0,12
Income Inequality (G) ^{ly}	-
Land Inequality (G) ^{ly}	-
Undernourished Population % ⁰⁰⁻⁰²	-



*1000 ** \$ **** 1000 \$ ***** Million \$ --- (G) : Gini Coefficient --- Income refers to GDP at 1995 Constant Prices

Agriculture In The Economy^{ly}

Resources

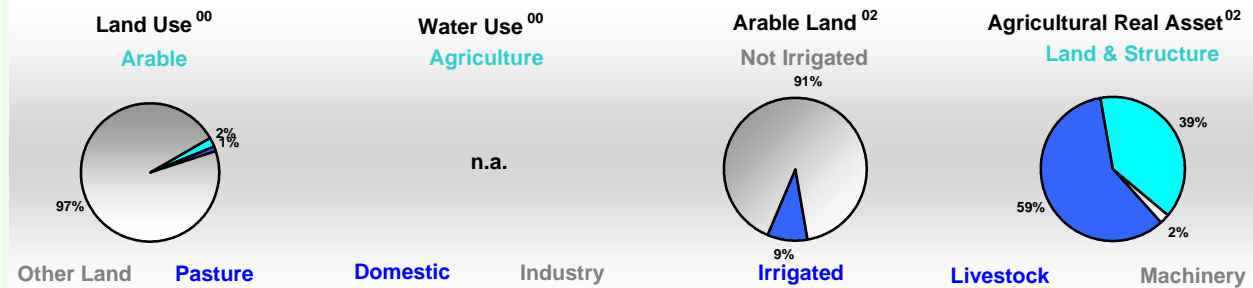


Arable Land ^{00 *}	7
Permanent Crops ^{00 *}	4
Pasture ^{00 *}	6
Cattle & Buffaloes ^{03 **}	8
Sheep & Goats ^{03 **}	7
Tractors ^{02 *}	8
Harvesters&Threshers ^{02 *}	1
Fertilizers Production ^{02 ***}	-
Fertilizers Consumption ^{02 ***}	-
Rainfall Index ^{02 (mm)}	3 024

* EAP : Economically Active Population

* 1000ha ** 1000heads *** Tonnes N,P₂O₅,K₂O

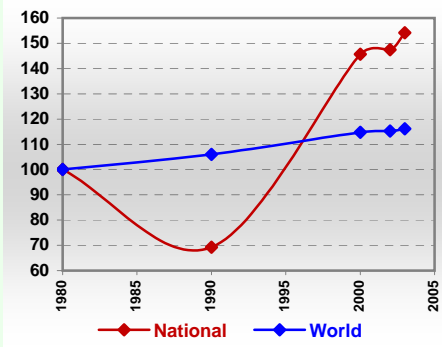
Resources Distribution



Production

Agriculture ^{03 *}		Forestry ⁰²		Fisheries ^{02 *}	
Cereals	0	Indust.Roundwood ^{**}	217	Pulpwd.,Rnd&Split ^{**}	-
Meat	18	Paper, Paperboard [*]	-	Roundwood ^{**}	229
Fruits & Vegetables	16			Log:Saw&Veneer ^{**}	206
Roots & Tubers	2			Sawnwood ^{**}	90
Pulses	-			Wood Charcoal [*]	0
Oilseeds & Nuts	0			Woodfuel ^{**}	12
Sugar Crops	-			Wood Pulp [*]	-
Tobacco	-			Wood-based Panels ^{**}	-
Fibre Crops	-				-
				Pelagic	0
				Freshwater	0
				Demersal	0
				Molluscs	0

Per Capita Agricultural Production Index



* 1000Tonnes ** 1000m³

Time reference= ⁹⁹⁻⁰¹:1999-2001, ⁰⁰:2000, ⁰²:2002, ⁰⁰⁻⁰²:2000-2002, ⁰³:2003, ⁰⁴:2004, ^{ly}:Latest Available Year



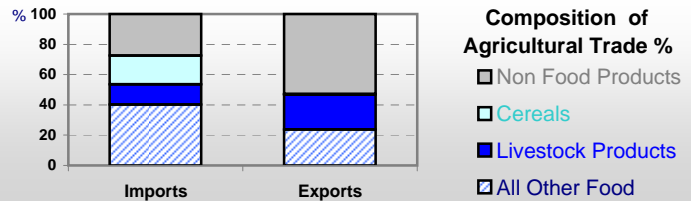
Country profiles

Brunei

Trade ⁰²

Agricultural Imports *	204
% 4 Major Imports in Agr.Imp	5
% Agr. Imports in Tot. Imports	13
Fishery Imports *	13
Forestry Imports *	3
Agricultural Exports *	1
% 4 Major Exports in Agr.Exp.	15
% Agr. Exports in Tot.Exports	0
Fishery Exports *	0
Forestry Exports *	0

* Million \$



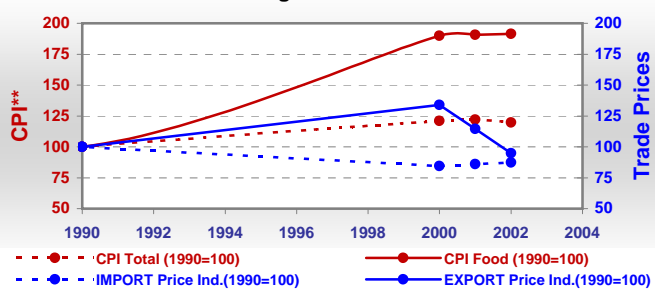
Trade Partners & Products

Major Import Partner	Malaysia	Singapore	Australia
Major Export Partner	Malaysia	Singapore	India
Major Imports	Food Prep	Cattle	Tobacco Prod
Major Exports	Skin W Calve	Choc Prod Ns	Bev Non-Alc

Prices

Producer Prices ⁰⁰⁻⁰²	\$*	\$ Green *
Wheat	-	-
Rice	-	-
Maize	-	-
Soybean	-	-
Coffee	-	-
Tobacco	-	-
Cow Milk	-	-
Cattle (Live Weight)	-	-
Pig (Live Weight)	-	-
Chicken (Live Weight)	-	-

Consumer and Agricultural Trade Price Indices

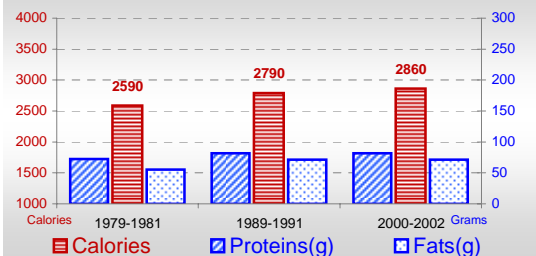


* per Tonne

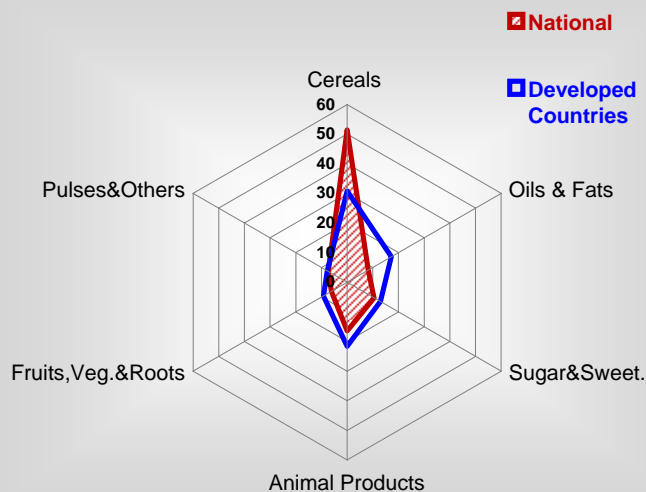
** CPI : Consumer Price Index

Consumption

Per Capita Daily Consumption



Source of Dietary Energy Consumption % ⁰⁰⁻⁰²



Per Capita Daily Calorie Intake From Selected Food Items ⁰⁰⁻⁰²

Rice	749
Wheat	456
Maize	170
Sorghum	-
Potatoes	19
Cassava	16
Sugar	257
Soybean Oil	3
Palm Oil	123
Milk	104
Anim.Fats(Raw&Butter)	35
Eggs	54
Pig Meat	28
Poultry Meat	157
Bovine Meat	58
Sheep & Goats Meat	5

Food Balance ⁰⁰⁻⁰² (1000Tonnes)

Food Groups	Production (+)	Exports (-)	Imports (+)	Seed, Feed, Other Uses (-)	Consumption (=)
Cereals	-	-	62	8	54
Veg.oils	-	-	6	3	3
Sugar&Sw.	-	-	15	3	12
Roots&Tub.	2	-	5	1	7
Meat	16	-	4	-1	21
Milk	-	-	32	8	24

Time reference= ⁹⁹⁻⁰¹:1999-2001, ⁰⁰:2000, ⁰²:2002, ⁰⁰⁻⁰²:2000-2002, ⁰³:2003, ⁰⁴:2004, ^{ly}:Latest Available Year