



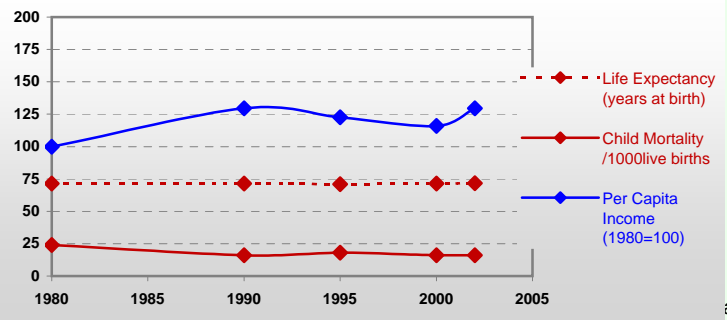
Country profiles

Bulgaria



General / Welfare

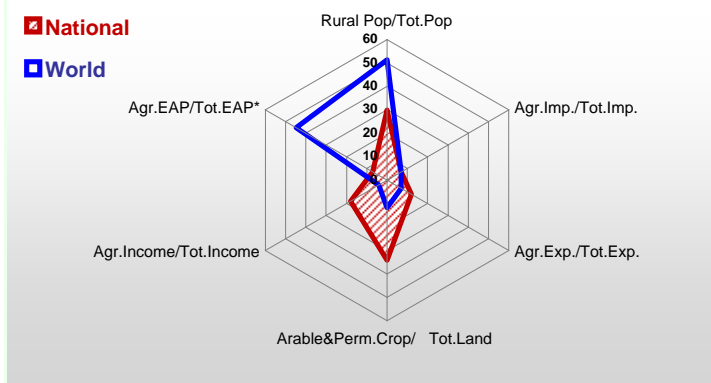
Population ⁰⁴ *	7 829
Per Capita Income ⁰² **	1 720
Per Capita Agricultural Income ⁰² **	4 591
Total Exports ⁰² ****	5 692
Total Imports ⁰² ****	7 903
Agric. External Assistance ⁹⁹⁻⁰¹ ***	138 118
Food Consumption Inequality (G) ^{ly}	0,14
Income Inequality (G) ^{ly}	0,32
Land Inequality (G) ^{ly}	-
Undernourished Population % ⁰⁰⁻⁰²	11



* 1000 ** \$ **** Million \$ --- (G): Gini Coefficient --- Income refers to GDP at 1995 Constant Prices

Agriculture In The Economy ^{ly}

Resources

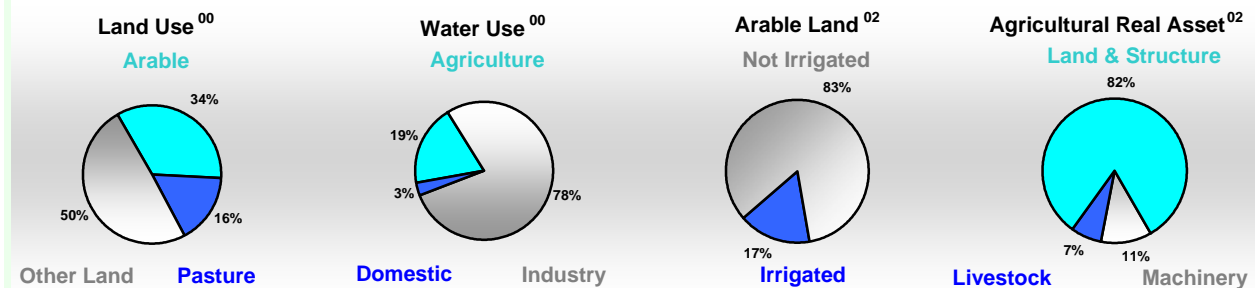


Arable Land ⁰⁰ *	3 526
Permanent Crops ⁰⁰ *	252
Pasture ⁰⁰ *	1 804
Cattle & Buffaloes ⁰³ **	699
Sheep & Goats ⁰³ **	2 628
Tractors ⁰² *	10
Harvesters&Threshers ⁰² *	3
Fertilizers Production ⁰² ***	357 065
Fertilizers Consumption ⁰² ***	165 943
Rainfall Index ⁰² (mm)	730

* EAP: Economically Active Population

* 1000ha ** 1000heads *** Tonnes N,P₂O₅,K₂O

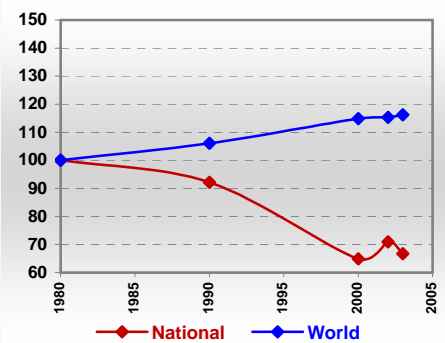
Resources Distribution



Production

Agriculture ⁰³ *		
Cereals	3 819	Pulpwd.,Rnd&Split **
Meat	464	Roundwood **
Fruits & Vegetables	1 910	Log:Saw&Veneer **
Roots & Tubers	630	Sawnwood **
Pulses	25	Wood Charcoal *
Oilseeds & Nuts	344	Woodfuel **
Sugar Crops	9	Wood Pulp *
Tobacco	60	Wood-based Panels **
Fibre Crops	2	
		Fisheries ⁰² *
		Pelagic
		Freshwater
		Demersal
		Molluscs

Per Capita Agricultural Production Index



* 1000Tonnes ** 1000m³

Time reference= ⁹⁹⁻⁰¹:1999-2001, ⁰⁰:2000, ⁰²:2002, ⁰⁰⁻⁰²:2000-2002, ⁰³:2003, ⁰⁴:2004, ^{ly}:Latest Available Year

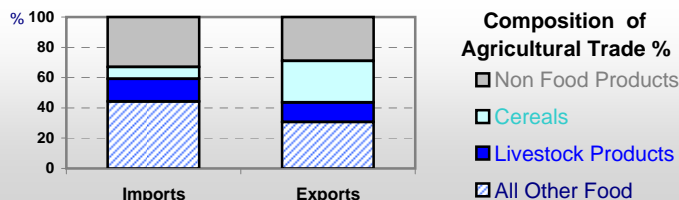


Country profiles

Bulgaria

Trade ⁰²

Agricultural Imports *	546
% 4 Major Imports in Agr.Imp	9
% Agr. Imports in Tot. Imports	7
Fishery Imports *	15
Forestry Imports *	154
Agricultural Exports *	669
% 4 Major Exports in Agr.Exp.	24
% Agr. Exports in Tot.Exports	12
Fishery Exports *	5
Forestry Exports *	139



Trade Partners & Products

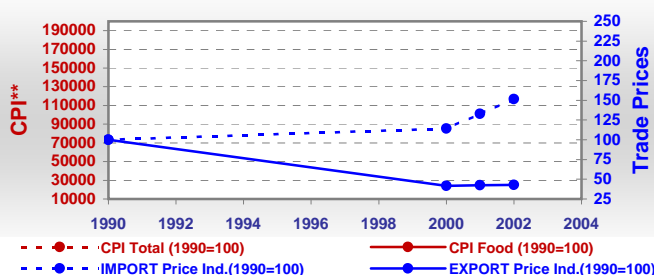
Major Import Partner			
Major Export Partner			
Major Imports	Food Prep	Sugar,C. Raw	Tobacco
Major Exports	Wheat	Wine	Tobacco

* Million \$

Prices

Producer Prices ⁰⁰⁻⁰²	\$*	\$ Green *
Wheat	82	124
Rice	173	261
Maize	98	147
Soybean	201	302
Coffee	-	-
Tobacco	1 371	2 064
Cow Milk	161	243
Cattle (Live Weight)	654	986
Pig (Live Weight)	940	1 419
Chicken (Live Weight)	703	1 060

Consumer and Agricultural Trade Price Indices

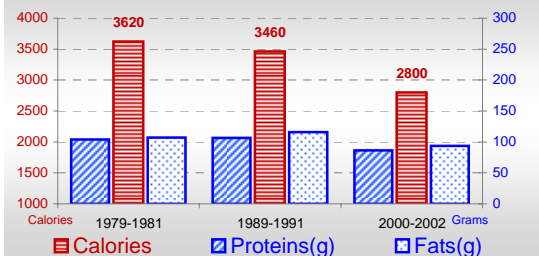


* per Tonne

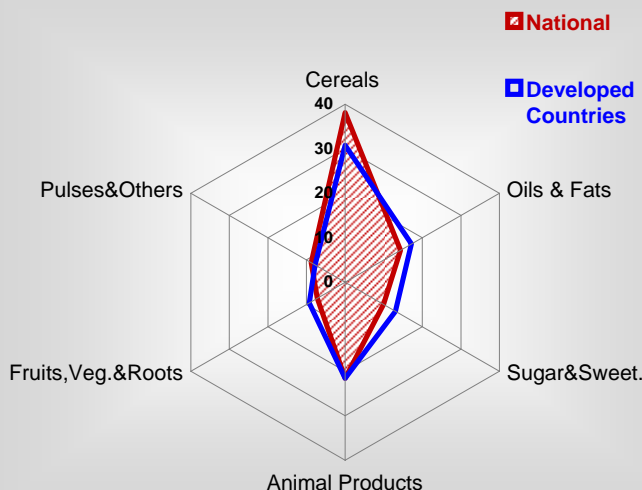
** CPI : Consumer Price Index

Consumption

Per Capita Daily Consumption



Source of Dietary Energy Consumption % ⁰⁰⁻⁰²



Per Capita Daily Calorie Intake From Selected Food Items ⁰⁰⁻⁰²

Rice	42
Wheat	914
Maize	94
Sorghum	-
Potatoes	60
Cassava	-
Sugar	267
Soybean Oil	27
Palm Oil	-
Milk	256
Anim.Fats(Raw&Butter)	74
Eggs	39
Pig Meat	150
Poultry Meat	56
Bovine Meat	34
Sheep & Goats Meat	40

Food Balance ^{00-02 (1000Tonnes)}

Food Groups	Production (+)	Exports (-)	Imports (+)	Seed, Feed, Others Uses (-)	Consumption (=)
Cereals	6 030	1 062	178	3 967	1 179
Veg.oils	145	26	48	57	110
Sugar&Sw.	30	31	229	-5	233
Roots&Tub.	542	1	44	318	267
Meat	475	15	69	-1	530
Milk	1 563	68	69	313	1 251

Time reference= ⁹⁹⁻⁰¹:1999-2001, ⁰⁰:2000, ⁰²:2002, ⁰⁰⁻⁰²:2000-2002, ⁰³:2003, ⁰⁴:2004, ^{ly}:Latest Available Year