



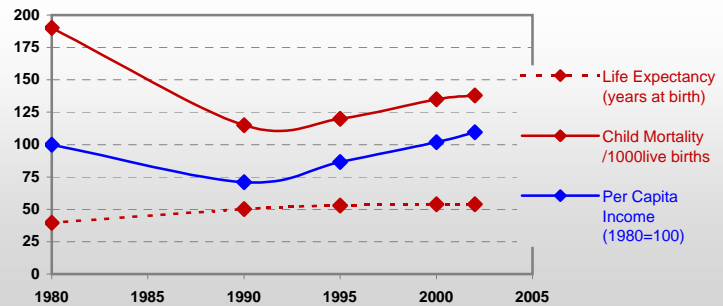
Country profiles

Cambodia



General / Welfare

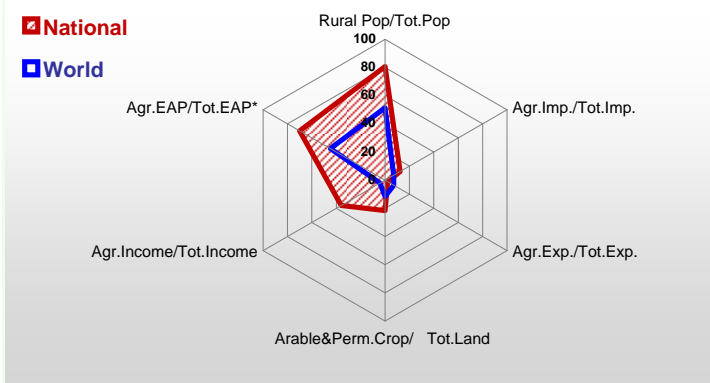
Population ^{04 *}	14 482
Per Capita Income ^{02 **}	416
Per Capita Agricultural Income ^{02**}	197
Total Exports ^{02 ****}	1 766
Total Imports ^{02 ****}	2 311
Agric. External Assistance ^{99-01 ***}	338 961
Food Consumption Inequality (G) ^{ly}	0,15
Income Inequality (G) ^{ly}	0,40
Land Inequality (G) ^{ly}	-
Undernourished Population % ⁰⁰⁻⁰²	33



* 1000 ** \$ **** Million \$ --- (G): Gini Coefficient --- Income refers to GDP at 1995 Constant Prices

Agriculture In The Economy^{ly}

Resources

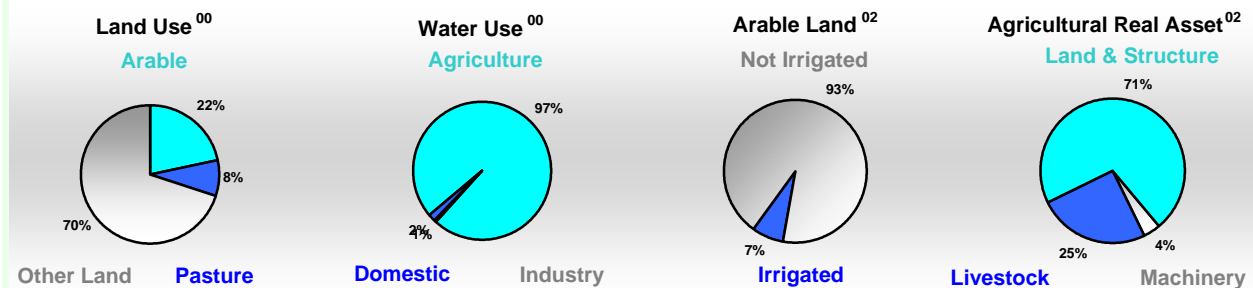


Arable Land ^{00 *}	3 700
Permanent Crops ^{00 *}	107
Pasture ^{00 *}	1 500
Cattle & Buffaloes ^{03 **}	3 570
Sheep & Goats ^{03 **}	-
Tractors ^{02 *}	1
Harvesters&Threshers ^{02 *}	0
Fertilizers Production ^{02 ***}	-
Fertilizers Consumption ^{02 ***}	-
Rainfall Index ^{02 (mm)}	1 993

* EAP: Economically Active Population ---

* 1000ha ** 1000heads *** Tonnes N,P₂O₅,K₂O

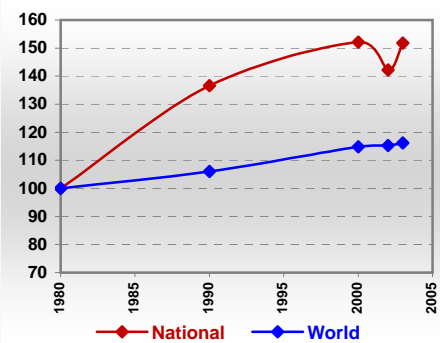
Resources Distribution



Production

Agriculture^{03 *}		
Cereals	4 490	Pulpwd.,Rnd&Split ^{**}
Meat	195	Roundwood ^{**}
Fruits & Vegetables	798	Log:Saw&Veneer ^{**}
Roots & Tubers	199	Sawnwood ^{**}
Pulses	24	Wood Charcoal [*]
Oilseeds & Nuts	28	Woodfuel ^{**}
Sugar Crops	220	Wood Pulp [*]
Tobacco	7	Wood-based Panels ^{**}
Fibre Crops	4	
Forestry⁰²		Fisheries^{02 *}
Indust.Roundwood ^{**}	125	Pelagic
Paper, Paperboard [*]	-	Freshwater
		Demersal
		Molluscs

Per Capita Agricultural Production Index



* 1000Tonnes ** 1000m³

Time reference= ⁹⁹⁻⁰¹:1999-2001, ⁰⁰:2000, ⁰²:2002, ⁰⁰⁻⁰²:2000-2002, ⁰³:2003, ⁰⁴:2004, ^{ly}:Latest Available Year



Country profiles

Cambodia

Trade ⁰²

Agricultural Imports *	281
% 4 Major Imports in Agr.Imp	14
% Agr. Imports in Tot. Imports	12
Fishery Imports *	4
Forestry Imports *	14
Agricultural Exports *	36
% 4 Major Exports in Agr.Exp.	82
% Agr. Exports in Tot.Exports	2
Fishery Exports *	22
Forestry Exports *	6



Trade Partners & Products

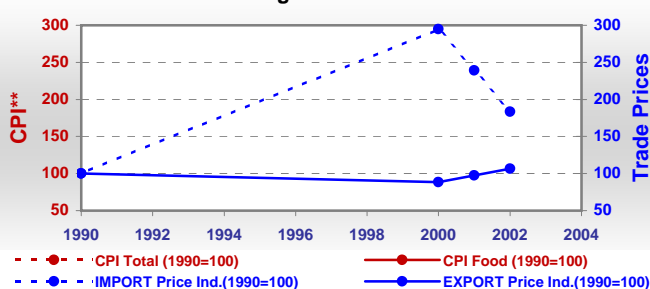
Major Import Partner			
Major Export Partner			
Major Imports	Cigarettes	Sugar Refind	Bev Dis Alc
Major Exports	Rubber Dry	Hide W Cattle	Mil Rice

* Million \$

Prices

Producer Prices ⁰⁰⁻⁰²	\$*	\$ Green *
Wheat	-	-
Rice	107	126
Maize	120	140
Soybean	330	387
Coffee	2 668	3 125
Tobacco	1 690	1 979
Cow Milk	59	69
Cattle (Live Weight)	752	881
Pig (Live Weight)	805	942
Chicken (Live Weight)	1 478	1 735

Consumer and Agricultural Trade Price Indices

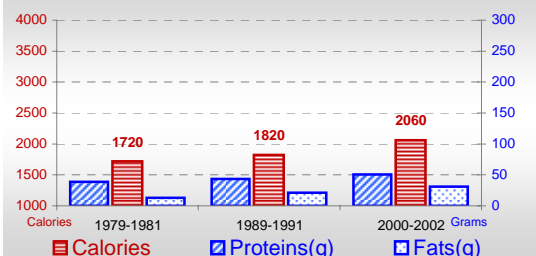


* per Tonne

** CPI : Consumer Price Index

Consumption

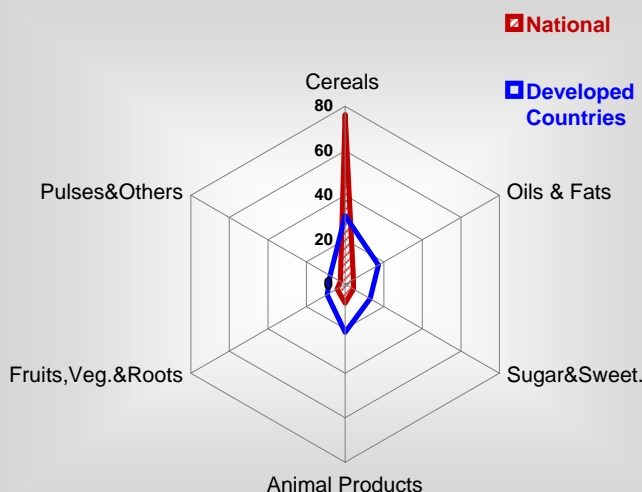
Per Capita Daily Consumption



Per Capita Daily Calorie Intake From Selected Food Items ⁰⁰⁻⁰²

Rice	1445
Wheat	18
Maize	103
Sorghum	-
Potatoes	-
Cassava	27
Sugar	78
Soybean Oil	10
Palm Oil	42
Milk	10
Anim.Fats(Raw&Butter)	15
Eggs	4
Pig Meat	77
Poultry Meat	9
Bovine Meat	21
Sheep & Goats Meat	-

Source of Dietary Energy Consumption % ⁰⁰⁻⁰²



Food Balance ⁰⁰⁻⁰² (1000Tonnes)

Food Groups	Production (+)	Exports (-)	Imports (+)	Seed, Feed, Other Uses (-)	Consumption (=)
Cereals	2 820	2	124	685	2 257
Veg.oils	18	-	33	10	41
Sugar&Sw.	19	-	135	30	124
Roots&Tub.	192	0	0	10	183
Meat	197	-	-	0	197
Milk	20	-	45	1	64

Time reference= ⁹⁹⁻⁰¹:1999-2001, ⁰⁰:2000, ⁰²:2002, ⁰⁰⁻⁰²:2000-2002, ⁰³:2003, ⁰⁴:2004, ^{ly}:Latest Available Year