



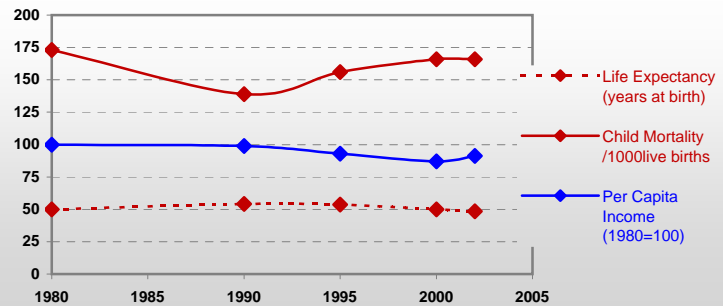
Country profiles

Cameroon



General / Welfare

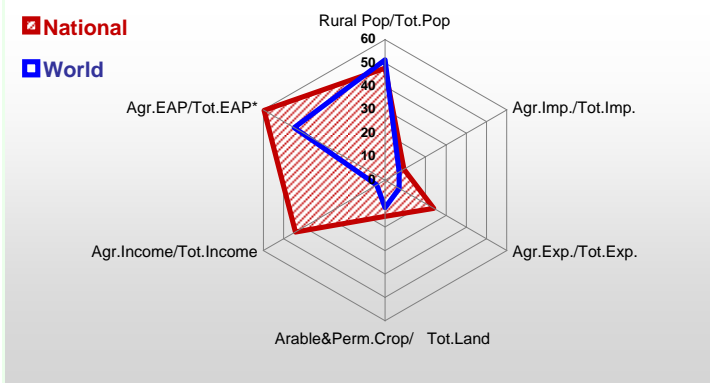
Population ^{04 *}	16 296
Per Capita Income ^{02 **}	700
Per Capita Agricultural Income ^{02**}	608
Total Exports ^{02 ****}	2 017
Total Imports ^{02 ****}	2 000
Agric. External Assistance ^{99-01 ***}	82 729
Food Consumption Inequality (G) ^{ly}	0,14
Income Inequality (G) ^{ly}	0,45
Land Inequality (G) ^{ly}	-
Undernourished Population % ⁰⁰⁻⁰²	25



* 1000 ** \$ *** 1000 \$ **** Million \$ --- (G) : Gini Coefficient --- Income refers to GDP at 1995 Constant Prices

Agriculture In The Economy^{ly}

Resources

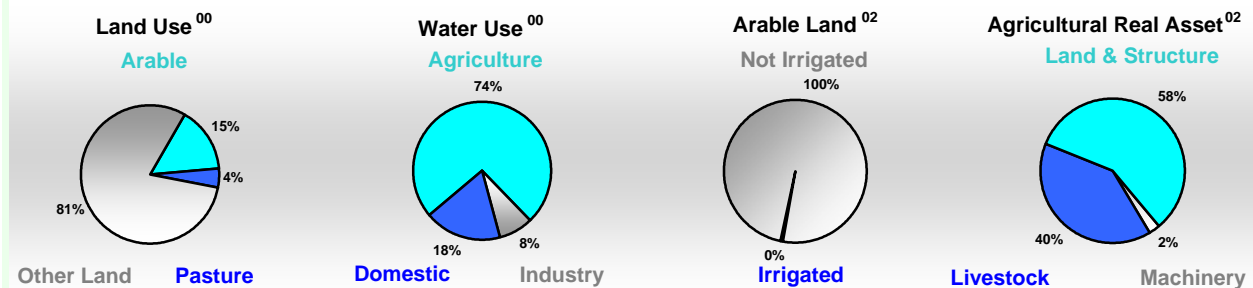


Arable Land ^{00 *}	5 960
Permanent Crops ^{00 *}	1 200
Pasture ^{00 *}	2 000
Cattle & Buffaloes ^{03 **}	5 900
Sheep & Goats ^{03 **}	8 200
Tractors ^{02 *}	0
Harvesters&Threshers ^{02 *}	-
Fertilizers Production ^{02 ***}	-
Fertilizers Consumption ^{02 ***}	34 899
Rainfall Index ^{02 (mm)}	1 778

* EAP : Economically Active Population

* 1000ha ** 1000heads *** Tonnes N,P₂O₅,K₂O

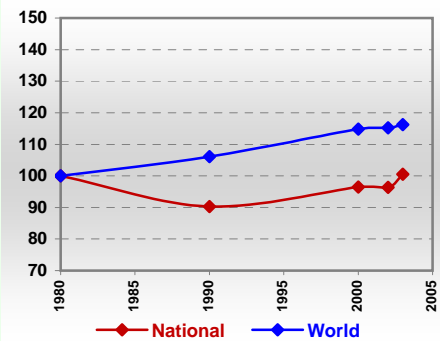
Resources Distribution



Production

Agriculture^{03 *}		Pulpwd.,Rnd&Split^{**}	-
Cereals	1 412	Roundwood ^{**}	10 526
Meat	219	Log:Saw&Veneer ^{**}	1 190
Fruits & Vegetables	3 332	Sawnwood ^{**}	800
Roots & Tubers	3 540	Wood Charcoal [*]	353
Pulses	267	Woodfuel ^{**}	9 256
Oilseeds & Nuts	407	Wood Pulp [*]	-
Sugar Crops	1 400	Wood-based Panels ^{**}	98
Tobacco	5	Fisheries^{02 *}	
Fibre Crops	93	Pelagic	45
Forestry⁰²		Freshwater	65
Indust.Roundwood ^{**}	1 270	Demersal	9
Paper, Paperboard [*]	-	Molluscs	0

Per Capita Agricultural Production Index



* 1000Tonnes ** 1000m³

Time reference= ⁹⁹⁻⁰¹ :1999-2001, ⁰⁰ :2000, ⁰² :2002, ⁰⁰⁻⁰² :2000-2002, ⁰³ :2003, ⁰⁴ :2004, ^{ly} :Latest Available Year



Country profiles

Cameroon

Trade ⁰²

Agricultural Imports *	170
% 4 Major Imports in Agr.Imp	50
% Agr. Imports in Tot. Imports	9
Fishery Imports *	14
Forestry Imports *	43
Agricultural Exports *	483
% 4 Major Exports in Agr.Exp.	50
% Agr. Exports in Tot.Exports	24
Fishery Exports *	0
Forestry Exports *	371



Trade Partners & Products

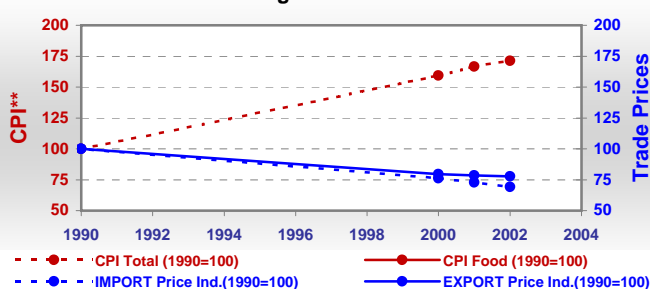
Major Import Partner	France	China	Belgium
Major Export Partner	Netherlands	France	Italy
Major Imports	Mil Rice	Wheat	Sugar Refind
Major Exports	Cocoa Beans	Cotton Lint	Coffee,Green

* Million \$

Prices

Producer Prices ⁰⁰⁻⁰²	\$*	\$ Green *
Wheat	118	119
Rice	188	189
Maize	176	177
Soybean	-	-
Coffee	514	517
Tobacco	2 204	2 216
Cow Milk	201	202
Cattle (Live Weight)	911	916
Pig (Live Weight)	1 294	1 300
Chicken (Live Weight)	1 215	1 221

Consumer and Agricultural Trade Price Indices

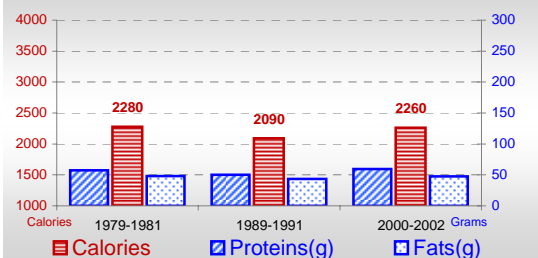


* per Tonne

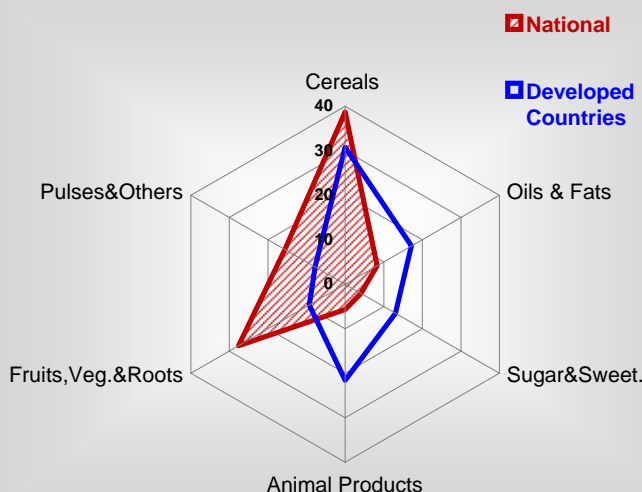
** CPI : Consumer Price Index

Consumption

Per Capita Daily Consumption



Source of Dietary Energy Consumption % ⁰⁰⁻⁰²



Per Capita Daily Calorie Intake From Selected Food Items ⁰⁰⁻⁰²

Rice	157
Wheat	107
Maize	366
Sorghum	208
Potatoes	13
Cassava	283
Sugar	90
Soybean Oil	7
Palm Oil	116
Milk	26
Anim.Fats(Raw&Butter)	6
Eggs	2
Pig Meat	9
Poultry Meat	8
Bovine Meat	32
Sheep & Goats Meat	10

Food Balance ^{00-02 (1000Tonnes)}

Food Groups	Production (+)	Exports (-)	Imports (+)	Seed, Feed, Other Uses (-)	Consumption (=)
Cereals	1 342	3	521	310	1 550
Veg.oils	196	10	16	87	115
Sugar&Sw.	101	2	49	-1	149
Roots&Tub.	3 537	2	0	1 263	2 273
Meat	215	-	11	0	226
Milk	184	3	48	9	220

Time reference= ⁹⁹⁻⁰¹:1999-2001, ⁰⁰:2000, ⁰²:2002, ⁰⁰⁻⁰²:2000-2002, ⁰³:2003, ⁰⁴:2004, ^{ly}:Latest Available Year