



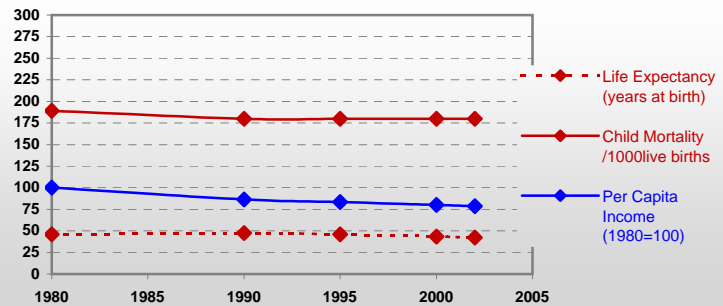
Country profiles

Central African Rep.



General / Welfare

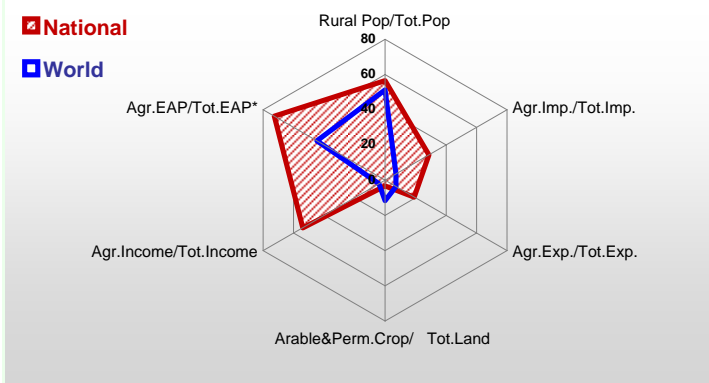
Population ^{04 *}	3 912
Per Capita Income ^{02 **}	332
Per Capita Agricultural Income ^{02**}	251
Total Exports ^{02 ****}	143
Total Imports ^{02 ****}	109
Agric. External Assistance ^{99-01 ***}	18 680
Food Consumption Inequality (G) ^{ly}	0,16
Income Inequality (G) ^{ly}	0,61
Land Inequality (G) ^{ly}	-
Undernourished Population % ⁰⁰⁻⁰²	43



*1000 ** \$ *** 1000 \$ **** Million \$ --- (G) : Gini Coefficient --- Income refers to GDP at 1995 Constant Prices

Agriculture In The Economy^{ly}

Resources

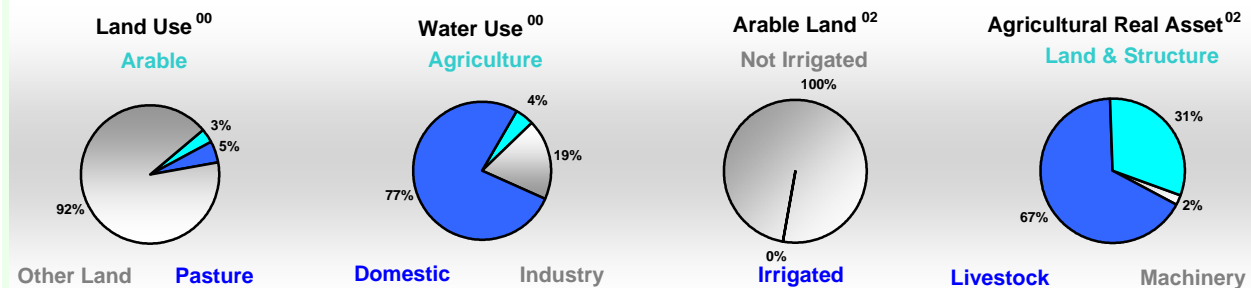


Arable Land ^{00 *}	1 930
Permanent Crops ^{00 *}	94
Pasture ^{00 *}	3 125
Cattle & Buffaloes ^{03 **}	3 347
Sheep & Goats ^{03 **}	3 167
Tractors ^{02 *}	0
Harvesters&Threshers ^{02 *}	0
Fertilizers Production ^{02 ***}	-
Fertilizers Consumption ^{02 ***}	600
Rainfall Index ^{02 (mm)}	1 309

* EAP : Economically Active Population

* 1000ha ** 1000heads *** Tonnes N,P₂O₅,K₂O

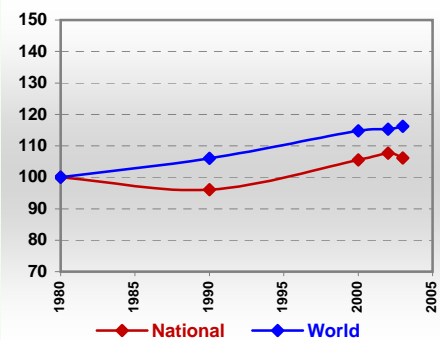
Resources Distribution



Production

Agriculture ^{03 *}		Forestry ⁰²		Fisheries ^{02 *}	
Cereals	202	Indust.Roundwood **	1 058	Pulpwd.,Rnd&Split **	-
Meat	123	Paper, Paperboard *	-	Roundwood **	3 058
Fruits & Vegetables	308			Log:Saw&Veneer **	750
Roots & Tubers	1 014			Sawnwood **	150
Pulses	30			Wood Charcoal *	21
Oilseeds & Nuts	76			Woodfuel **	2 000
Sugar Crops	90			Wood Pulp *	-
Tobacco	0			Wood-based Panels **	4
Fibre Crops	10				
				Pelagic	-
				Freshwater	15
				Demersal	-
				Molluscs	-

Per Capita Agricultural Production Index



* 1000Tonnes ** 1000m³

Time reference= ⁹⁹⁻⁰¹ :1999-2001, ⁰⁰ :2000, ⁰² :2002, ⁰⁰⁻⁰² :2000-2002, ⁰³ :2003, ⁰⁴ :2004, ^{ly} :Latest Available Year

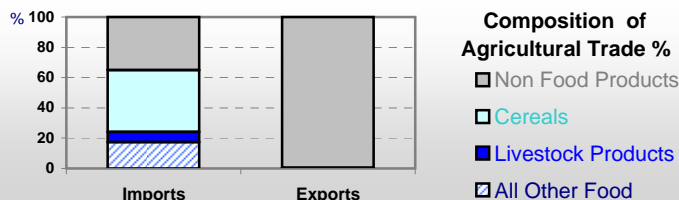


Country profiles

Central African Rep.

Trade ⁰²

Agricultural Imports *	31
% 4 Major Imports in Agr.Imp	30
% Agr. Imports in Tot. Imports	29
Fishery Imports *	0
Forestry Imports *	0
Agricultural Exports *	27
% 4 Major Exports in Agr.Exp.	55
% Agr. Exports in Tot.Exports	19
Fishery Exports *	-
Forestry Exports *	106



* Million \$

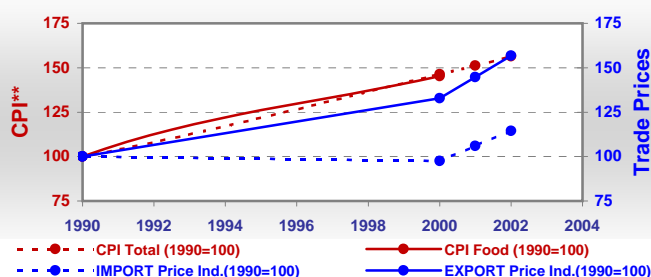
Trade Partners & Products

Major Import Partner			
Major Export Partner			
Major Imports	Flour Wheat	Oil Vg Or Ns	Tobacco
Major Exports	Cotton Lint	Tobacco	Coffee,Green

Prices

Producer Prices ⁰⁰⁻⁰²	\$*	\$ Green *
Wheat	-	-
Rice	-	-
Maize	-	-
Soybean	-	-
Coffee	-	-
Tobacco	-	-
Cow Milk	-	-
Cattle (Live Weight)	-	-
Pig (Live Weight)	-	-
Chicken (Live Weight)	-	-

Consumer and Agricultural Trade Price Indices

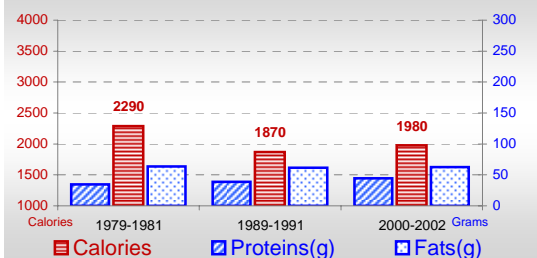


* per Tonne

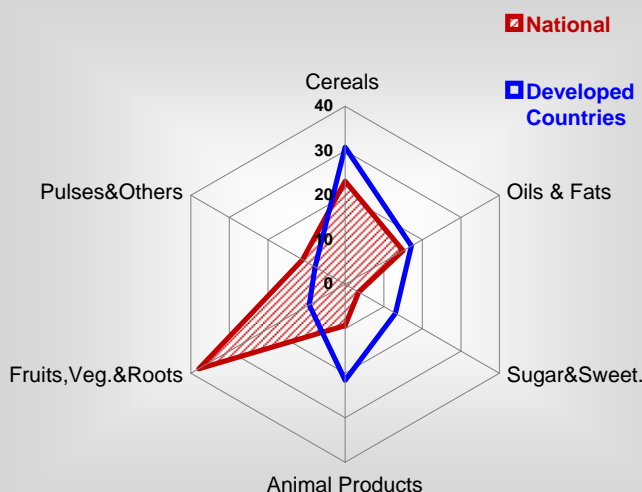
** CPI : Consumer Price Index

Consumption

Per Capita Daily Consumption



Source of Dietary Energy Consumption % ⁰⁰⁻⁰²



Per Capita Daily Calorie Intake From Selected Food Items ⁰⁰⁻⁰²

Rice	47
Wheat	87
Maize	206
Sorghum	95
Potatoes	-
Cassava	370
Sugar	39
Soybean Oil	6
Palm Oil	13
Milk	29
Anim.Fats(Raw&Butter)	20
Eggs	1
Pig Meat	29
Poultry Meat	3
Bovine Meat	86
Sheep & Goats Meat	11

Food Balance ⁰⁰⁻⁰² (1000Tonnes)

Food Groups	Production (+)	Exports (-)	Imports (+)	Seed, Feed, Other Uses (-)	Consumption (=)
Cereals	184	-	52	32	204
Veg.oils	41	-	2	0	43
Sugar&Sw.	26	-	2	0	28
Roots&Tub.	1 036	-	0	78	959
Meat	98	-	-	-1	99
Milk	64	-	2	3	63

Time reference= ⁹⁹⁻⁰¹:1999-2001, ⁰⁰:2000, ⁰²:2002, ⁰⁰⁻⁰²:2000-2002, ⁰³:2003, ⁰⁴:2004, ^{ly}:Latest Available Year