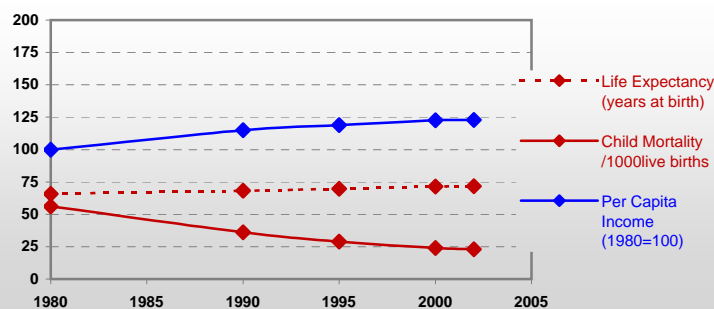


Colombia



General / Welfare

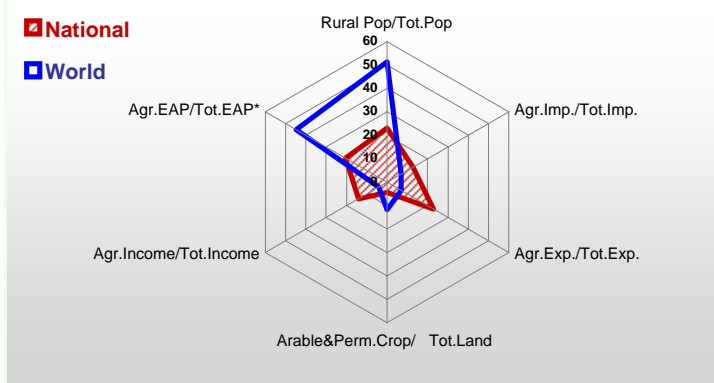
Population ^{04 *}	44 914
Per Capita Income ^{02 **}	2 282
Per Capita Agricultural Income ^{02**}	1 580
Total Exports ^{02 ****}	11 908
Total Imports ^{02 ****}	12 699
Agric. External Assistance ^{99-01 ***}	112 329
Food Consumption Inequality (G) ^{ly}	0,16
Income Inequality (G) ^{ly}	0,58
Land Inequality (G) ^{ly}	0,80
Undernourished Population % ⁰⁰⁻⁰²	13



*1000 ** \$ **** 1000 \$ ***** Million \$ --- (G) : Gini Coefficient --- Income refers to GDP at 1995 Constant Prices

Agriculture In The Economy^{ly}

Resources

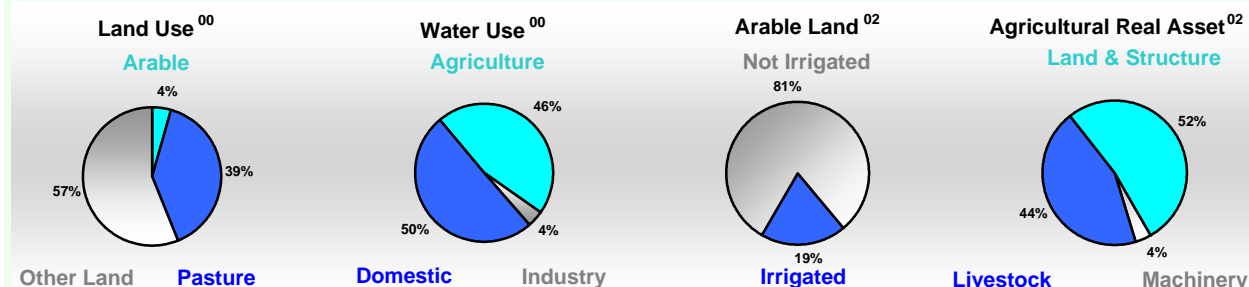


Arable Land ^{00 *}	2 818
Permanent Crops ^{00 *}	1 727
Pasture ^{00 *}	40 920
Cattle & Buffaloes ^{03 **}	25 000
Sheep & Goats ^{03 **}	3 250
Tractors ^{02 *}	9
Harvesters&Threshers ^{02 *}	1
Fertilizers Production ^{02 ***}	22 000
Fertilizers Consumption ^{02 ***}	691 500
Rainfall Index ^{02 (mm)}	2 708

* EAP : Economically Active Population

* 1000ha ** 1000heads *** Tonnes N,P₂O₅,K₂O

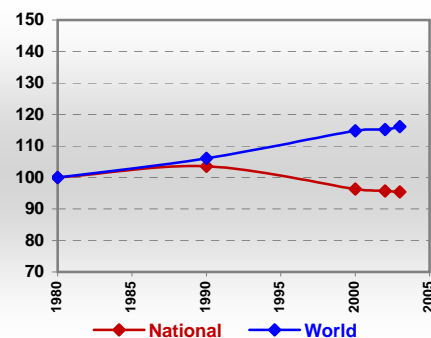
Resources Distribution



Production

Agriculture^{03 *}		Pulpwd.,Rnd&Split ^{**}	778
Cereals	4 062	Roundwood ^{**}	11 610
Meat	1 442	Log:Saw&Veneer ^{**}	1 161
Fruits & Vegetables	8 631	Sawnwood ^{**}	527
Roots & Tubers	5 071	Wood Charcoal [*]	147
Pulses	170	Woodfuel ^{**}	9 598
Oilseeds & Nuts	616	Wood Pulp [*]	202
Sugar Crops	37 000	Wood-based Panels ^{**}	182
Tobacco	18	Fisheries^{02 *}	
Fibre Crops	49	Pelagic	65
Forestry⁰²		Freshwater	78
Indust.Roundwood ^{**}	2 012	Demersal	3
Paper, Paperboard [*]	837	Molluscs	0

Per Capita Agricultural Production Index



* 1000Tonnes ** 1000m³

Time reference= ⁹⁹⁻⁰¹ :1999-2001, ⁰⁰ :2000, ⁰² :2002, ⁰⁰⁻⁰² :2000-2002, ⁰³ :2003, ⁰⁴ :2004, ^{ly} :Latest Available Year

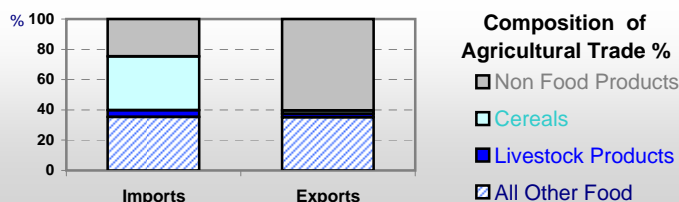


Country profiles

Colombia

Trade ⁰²

Agricultural Imports *	1 603
% 4 Major Imports in Agr.Imp	18
% Agr. Imports in Tot. Imports	13
Fishery Imports *	77
Forestry Imports *	342
Agricultural Exports *	2 724
% 4 Major Exports in Agr.Exp.	68
% Agr. Exports in Tot.Exports	23
Fishery Exports *	166
Forestry Exports *	131



Trade Partners & Products

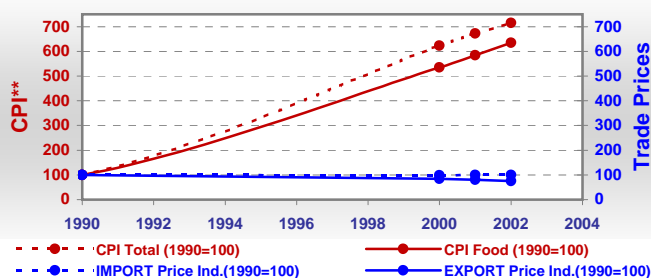
Major Import Partner	USA	Bolivia	Canada
Major Export Partner	USA	Venezuela	Germany
Major Imports	Maize	Wheat	Soybeans
Major Exports	Coffee,Green	Bananas	Sugar Conf

* Million \$

Prices

Producer Prices ⁰⁰⁻⁰²	\$*	\$ Green *
Wheat	197	165
Rice	208	175
Maize	173	145
Soybean	282	236
Coffee	1 087	903
Tobacco	624	523
Cow Milk	216	181
Cattle (Live Weight)	790	666
Pig (Live Weight)	1 015	851
Chicken (Live Weight)	890	745

Consumer and Agricultural Trade Price Indices

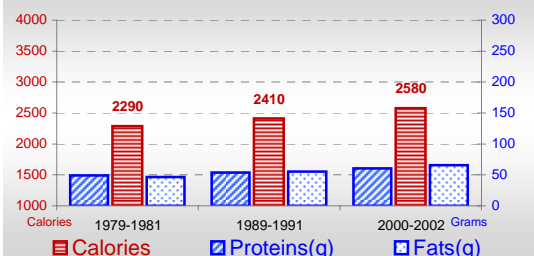


* per Tonne

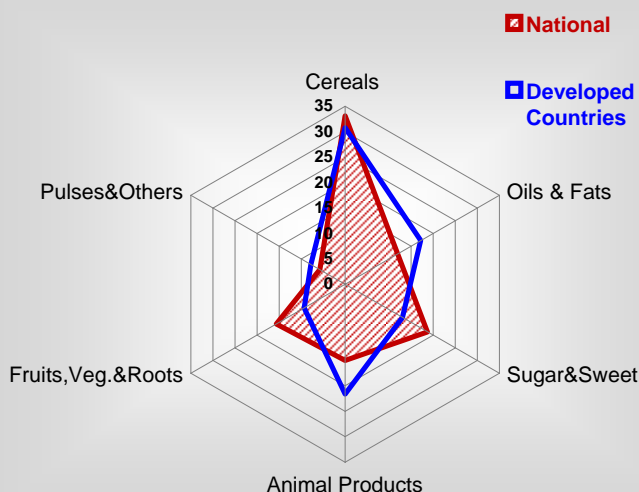
** CPI : Consumer Price Index

Consumption

Per Capita Daily Consumption



Source of Dietary Energy Consumption % ⁰⁰⁻⁰²



Per Capita Daily Calorie Intake From Selected Food Items ⁰⁰⁻⁰²

Rice	305
Wheat	207
Maize	330
Sorghum	-
Potatoes	95
Cassava	83
Sugar	292
Soybean Oil	85
Palm Oil	137
Milk	183
Anim.Fats(Raw&Butter)	31
Eggs	23
Pig Meat	17
Poultry Meat	49
Bovine Meat	96
Sheep & Goats Meat	1

Food Balance ^{00-02 (1000Tonnes)}

Food Groups	Production (+)	Exports (-)	Imports (+)	Seed, Feed, Other Uses (-)	Consumption (=)
Cereals	2 996	87	3 511	2 179	4 241
Veg.oils	716	151	214	293	486
Sugar&Sw.	3 803	1 135	70	606	2 132
Roots&Tub.	5 029	57	79	1 287	3 764
Meat	1 405	5	44	12	1 432
Milk	5 886	147	133	1 117	4 755

Time reference= ⁹⁹⁻⁰¹:1999-2001, ⁰⁰:2000, ⁰²:2002, ⁰⁰⁻⁰²:2000-2002, ⁰³:2003, ⁰⁴:2004, ^{ly}:Latest Available Year