



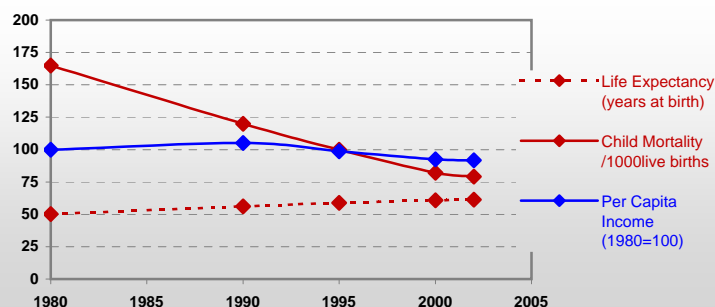
Country profiles

Comoros



General / Welfare

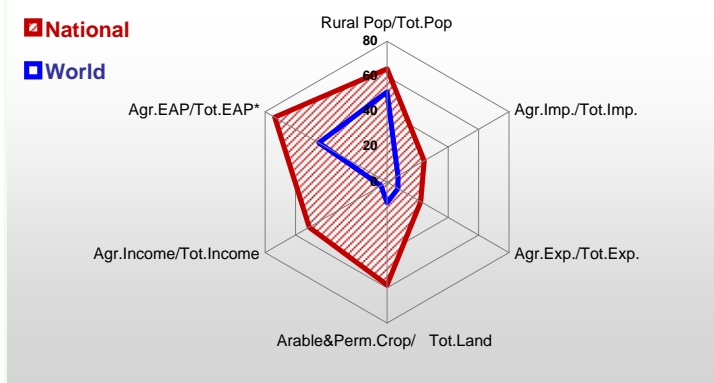
Population ^{04 *}	790
Per Capita Income ^{02 **}	436
Per Capita Agricultural Income ^{02**}	241
Total Exports ^{02 ****}	40
Total Imports ^{02 ****}	85
Agric. External Assistance ^{99-01 ***}	5 453
Food Consumption Inequality (G) ^{ly}	0,15
Income Inequality (G) ^{ly}	-
Land Inequality (G) ^{ly}	-
Undernourished Population % ⁰⁰⁻⁰²	-



*1000 ** \$ **** Million \$ --- (G) : Gini Coefficient --- Income refers to GDP at 1995 Constant Prices

Agriculture In The Economy^{ly}

Resources



Arable Land ^{00 *}	80
Permanent Crops ^{00 *}	50
Pasture ^{00 *}	15
Cattle & Buffaloes ^{03 **}	52
Sheep & Goats ^{03 **}	136
Tractors ^{02 *}	-
Harvesters&Threshers ^{02 *}	-
Fertilizers Production ^{02 ***}	-
Fertilizers Consumption ^{02 ***}	300
Rainfall Index ^{02 (mm)}	2 448

* EAP : Economically Active Population

* 1000ha ** 1000heads *** Tonnes N,P₂O₅,K₂O

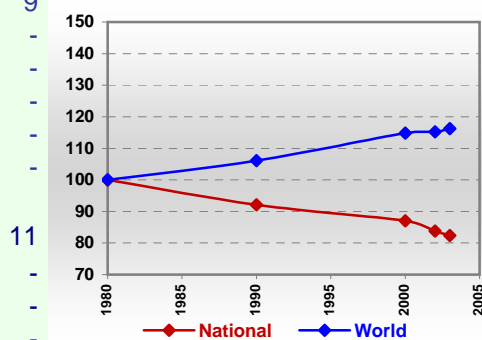
Resources Distribution



Production

Agriculture ^{03 *}		Forestry ⁰²		Fisheries ^{02 *}	
Cereals	21	Indust.Roundwood ^{**}	9	Pulpwd.,Rnd&Split ^{**}	-
Meat	2	Paper, Paperboard [*]	-	Roundwood ^{**}	9
Fruits & Vegetables	67			Log:Saw&Veneer ^{**}	9
Roots & Tubers	74			Sawnwood ^{**}	-
Pulses	14			Wood Charcoal [*]	-
Oilseeds & Nuts	10			Woodfuel ^{**}	-
Sugar Crops	-			Wood Pulp [*]	-
Tobacco	-			Wood-based Panels ^{**}	-
Fibre Crops	-				-
				Pelagic	11
				Freshwater	-
				Demersal	-
				Molluscs	-

Per Capita Agricultural Production Index



* 1000Tonnes ** 1000m³

Time reference= ⁹⁹⁻⁰¹:1999-2001, ⁰⁰:2000, ⁰²:2002, ⁰⁰⁻⁰²:2000-2002, ⁰³:2003, ⁰⁴:2004, ^{ly}:Latest Available Year

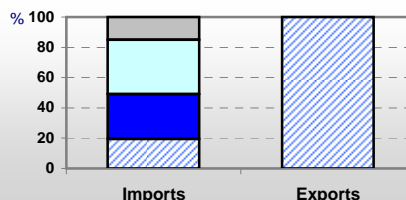


Country profiles

Comoros

Trade ⁰²

Agricultural Imports *	20
% 4 Major Imports in Agr.Imp	26
% Agr. Imports in Tot. Imports	24
Fishery Imports *	0
Forestry Imports *	0
Agricultural Exports *	8
% 4 Major Exports in Agr.Exp.	100
% Agr. Exports in Tot.Exports	22
Fishery Exports *	0
Forestry Exports *	-



Composition of Agricultural Trade %

- Non Food Products
- Cereals
- Livestock Products
- All Other Food

Trade Partners & Products

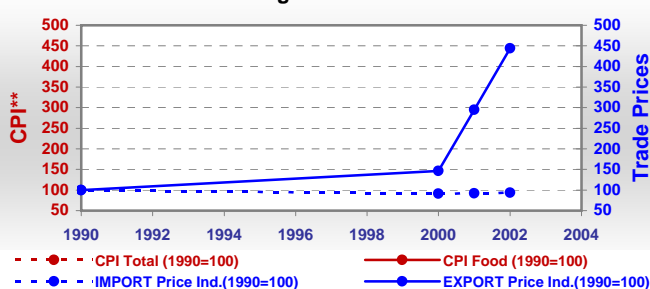
Major Import Partner	France	India	South Africa
Major Export Partner	France	USA	Germany
Major Imports	Mil Rice	Chicken Meat	Beef Bonless
Major Exports	Vanilla	Cloves	Ess Oils nes

* Million \$

Prices

Producer Prices ⁰⁰⁻⁰²	\$*	\$ Green *
Wheat	-	-
Rice	-	-
Maize	-	-
Soybean	-	-
Coffee	-	-
Tobacco	-	-
Cow Milk	-	-
Cattle (Live Weight)	-	-
Pig (Live Weight)	-	-
Chicken (Live Weight)	-	-

Consumer and Agricultural Trade Price Indices

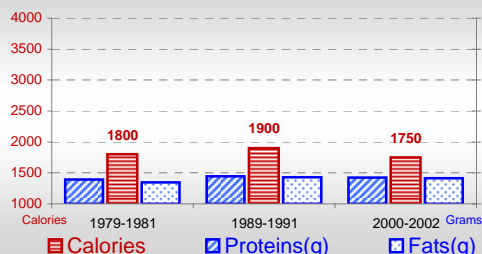


* per Tonne

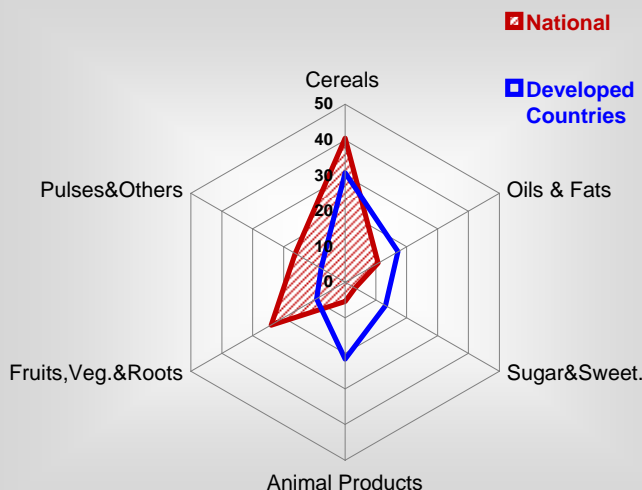
** CPI : Consumer Price Index

Consumption

Per Capita Daily Consumption



Source of Dietary Energy Consumption % ⁰⁰⁻⁰²



Per Capita Daily Calorie Intake From Selected Food Items ⁰⁰⁻⁰²

Rice	585
Wheat	85
Maize	35
Sorghum	-
Potatoes	2
Cassava	218
Sugar	53
Soybean Oil	11
Palm Oil	7
Milk	17
Anim.Fats(Raw&Butter)	2
Eggs	3
Pig Meat	-
Poultry Meat	13
Bovine Meat	15
Sheep & Goats Meat	2

Food Balance ⁰⁰⁻⁰² (1000Tonnes)

Food Groups	Production (+)	Exports (-)	Imports (+)	Seed, Feed, Other Uses (-)	Consumption (=)
Cereals	15	-	44	6	53
Veg.oils	5	-	1	0	6
Sugar&Sw.	-	-	7	3	4
Roots&Tub.	73	0	0	3	70
Meat	2	-	4	0	6
Milk	5	-	2	0	7

Time reference= ⁹⁹⁻⁰¹:1999-2001, ⁰⁰:2000, ⁰²:2002, ⁰⁰⁻⁰²:2000-2002, ⁰³:2003, ⁰⁴:2004, ^{ly}:Latest Available Year