



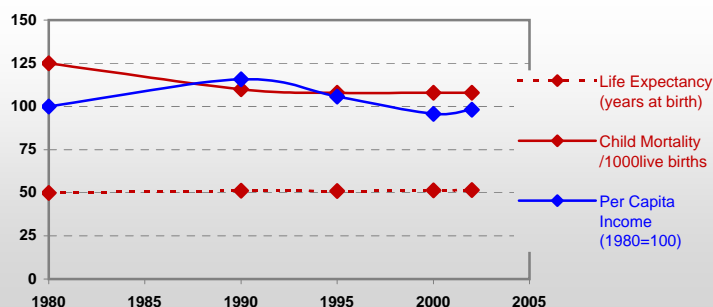
Country profiles

Congo



General / Welfare

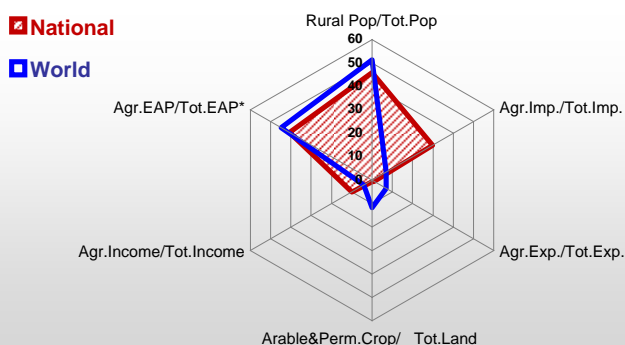
Population ^{04 *}	3 818
Per Capita Income ^{02 **}	700
Per Capita Agricultural Income ^{02**}	179
Total Exports ^{02 ****}	2 270
Total Imports ^{02 ****}	580
Agric. External Assistance ^{99-01 ***}	2 754
Food Consumption Inequality (G) ^{ly}	0,16
Income Inequality (G) ^{ly}	-
Land Inequality (G) ^{ly}	-
Undernourished Population % ⁰⁰⁻⁰²	37



*1000 ** \$ *** 1000 \$ **** Million \$ --- (G) : Gini Coefficient --- Income refers to GDP at 1995 Constant Prices

Agriculture In The Economy^{ly}

Resources

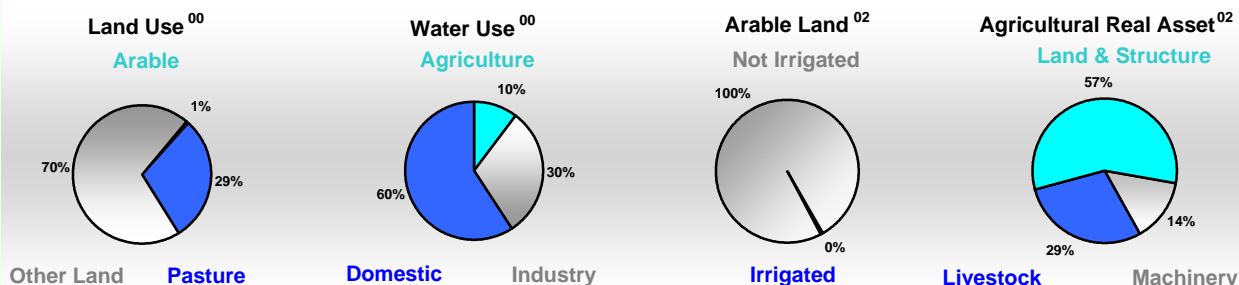


Arable Land ^{00 *}	180
Permanent Crops ^{00 *}	50
Pasture ^{00 *}	10 000
Cattle & Buffaloes ^{03 **}	122
Sheep & Goats ^{03 **}	391
Tractors ^{02 *}	4
Harvesters&Threshers ^{02 *}	0
Fertilizers Production ^{02 ***}	-
Fertilizers Consumption ^{02 ***}	236
Rainfall Index ^{02 (mm)}	1 426

* EAP : Economically Active Population

* 1000ha ** 1000heads *** Tonnes N,P₂O₅,K₂O

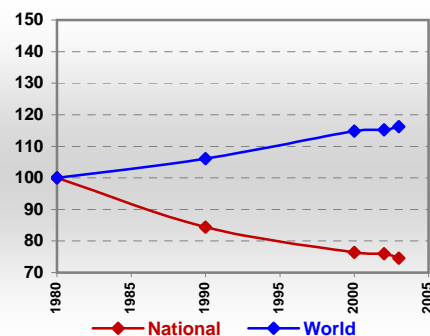
Resources Distribution



Production

Agriculture ^{03 *}		Forestry ⁰²		Fisheries ^{02 *}	
Cereals	8	Indust.Roundwood **	1 251	Pulpwd.,Rnd&Split **	361
Meat	28	Paper, Paperboard *	-	Roundwood **	2 437
Fruits & Vegetables	265			Log:Saw&Veneer **	520
Roots & Tubers	939			Sawnwood **	140
Pulses	9			Wood Charcoal *	3
Oilseeds & Nuts	27			Woodfuel **	1 186
Sugar Crops	460			Wood Pulp *	-
Tobacco	0			Wood-based Panels **	25
Fibre Crops	-				
				Pelagic	13
				Freshwater	21
				Demersal	4
				Molluscs	-

Per Capita Agricultural Production Index



* 1000Tonnes ** 1000m³

Time reference= ⁹⁹⁻⁰¹ :1999-2001, ⁰⁰ :2000, ⁰² :2002, ⁰⁰⁻⁰² :2000-2002, ⁰³ :2003, ⁰⁴ :2004, ^{ly} :Latest Available Year

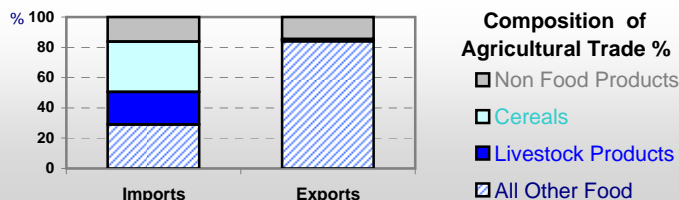


Country profiles

Congo

Trade ⁰²

Agricultural Imports *	270
% 4 Major Imports in Agr.Imp	11
% Agr. Imports in Tot. Imports	30
Fishery Imports *	12
Forestry Imports *	2
Agricultural Exports *	24
% 4 Major Exports in Agr.Exp.	65
% Agr. Exports in Tot.Exports	1
Fishery Exports *	3
Forestry Exports *	263



Trade Partners & Products

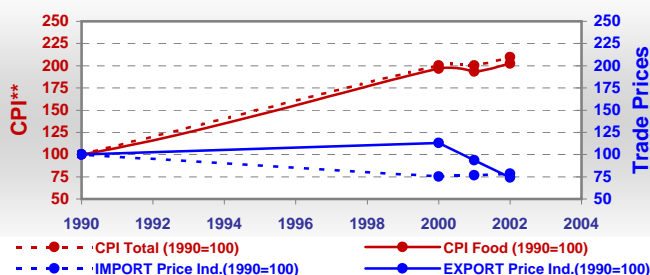
Major Import Partner			
Major Export Partner			
Major Imports	Mil Rice	Wheat	Oil Soyabean
Major Exports	Sugar,C. Raw	Sugar Refind	Bran Wheat

* Million \$

Prices

Producer Prices ⁰⁰⁻⁰²	\$*	\$ Green *
Wheat	-	-
Rice	160	52
Maize	259	84
Soybean	-	-
Coffee	638	206
Tobacco	1 052	343
Cow Milk	612	199
Cattle (Live Weight)	1 504	490
Pig (Live Weight)	1 116	364
Chicken (Live Weight)	2 877	937

Consumer and Agricultural Trade Price Indices

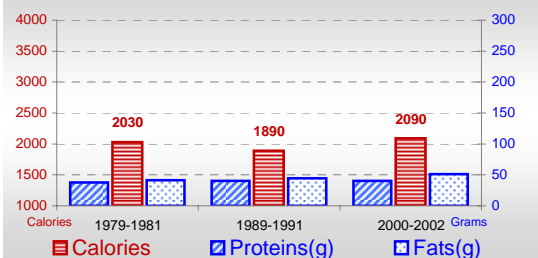


* per Tonne

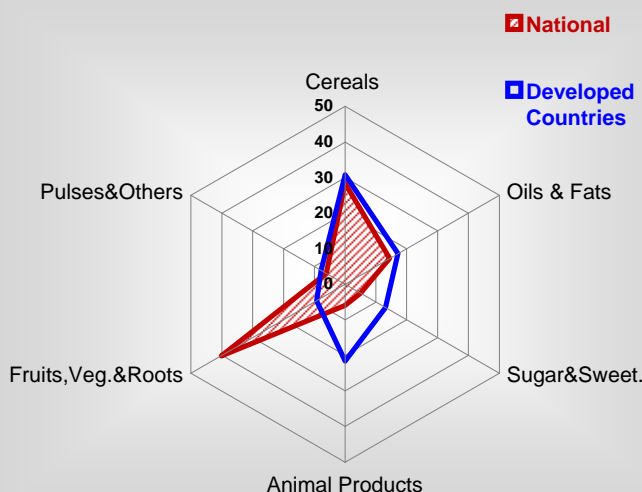
** CPI : Consumer Price Index

Consumption

Per Capita Daily Consumption



Source of Dietary Energy Consumption % ⁰⁰⁻⁰²



Per Capita Daily Calorie Intake From Selected Food Items ⁰⁰⁻⁰²

Rice	136
Wheat	390
Maize	63
Sorghum	-
Potatoes	2
Cassava	686
Sugar	104
Soybean Oil	118
Palm Oil	110
Milk	27
Anim.Fats(Raw&Butter)	2
Eggs	2
Pig Meat	18
Poultry Meat	14
Bovine Meat	6
Sheep & Goats Meat	1

Food Balance ^{00-02 (1000Tonnes)}

Food Groups	Production (+)	Exports (-)	Imports (+)	Seed, Feed, Other Uses (-)	Consumption (=)
Cereals	7	-	248	5	250
Veg.oils	19	-	31	6	44
Sugar&Sw.	43	41	35	0	37
Roots&Tub.	901	1	3	15	888
Meat	27	-	20	0	47
Milk	1	-	46	0	47

Time reference= ⁹⁹⁻⁰¹:1999-2001, ⁰⁰:2000, ⁰²:2002, ⁰⁰⁻⁰²:2000-2002, ⁰³:2003, ⁰⁴:2004, ^{ly}:Latest Available Year