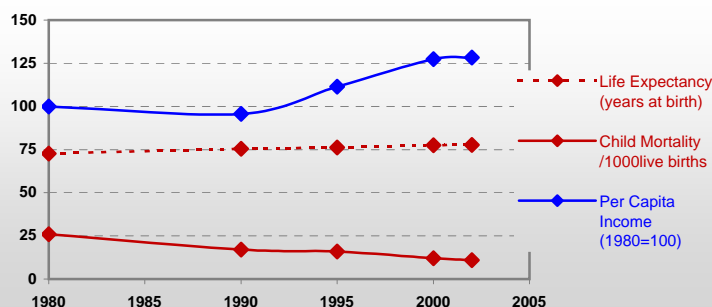


Costa Rica



General / Welfare

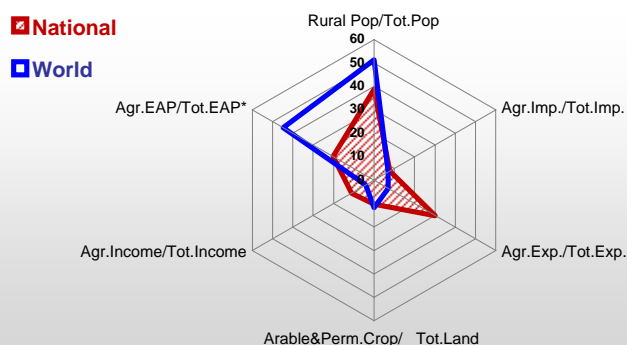
Population ^{04 *}	4 250
Per Capita Income ^{02 **}	3 938
Per Capita Agricultural Income ^{02**}	2 090
Total Exports ^{02 ****}	5 290
Total Imports ^{02 ****}	6 959
Agric. External Assistance ^{99-01 ***}	61 019
Food Consumption Inequality (G) ^{ly}	0,12
Income Inequality (G) ^{ly}	0,47
Land Inequality (G) ^{ly}	-
Undernourished Population % ⁰⁰⁻⁰²	4



* 1000 ** \$ *** 1000 \$ **** Million \$ --- (G) : Gini Coefficient --- Income refers to GDP at 1995 Constant Prices

Agriculture In The Economy^{ly}

Resources

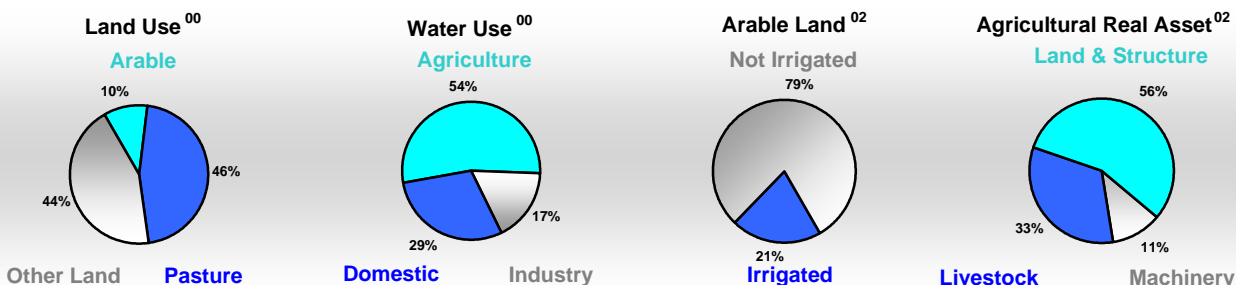


Arable Land ^{00 *}	225
Permanent Crops ^{00 *}	300
Pasture ^{00 *}	2 340
Cattle & Buffaloes ^{03 **}	1 150
Sheep & Goats ^{03 **}	6
Tractors ^{02 *}	31
Harvesters&Threshers ^{02 *}	5
Fertilizers Production ^{02 ***}	-
Fertilizers Consumption ^{02 ***}	151 562
Rainfall Index ^{02 (mm)}	2 926

* EAP : Economically Active Population

* 1000ha ** 1000heads *** Tonnes N,P₂O₅,K₂O

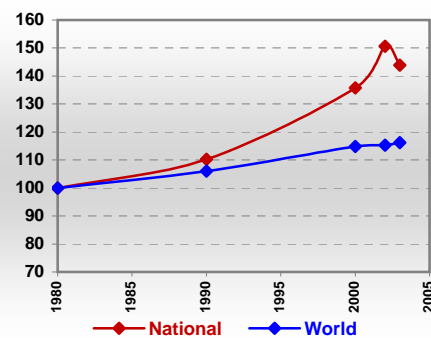
Resources Distribution



Production

Agriculture^{03 *}		Pulpwd.,Rnd&Split^{**}	-
Cereals	229	Roundwood ^{**}	5 150
Meat	182	Log:Saw&Veneer ^{**}	1 441
Fruits & Vegetables	3 772	Sawnwood ^{**}	812
Roots & Tubers	213	Wood Charcoal [*]	10
Pulses	15	Woodfuel ^{**}	3 463
Oilseeds & Nuts	145	Wood Pulp [*]	3
Sugar Crops	3 959	Wood-based Panels ^{**}	65
Tobacco	0	Fisheries^{02 *}	
Fibre Crops	1	Pelagic	16
Forestry⁰²		Freshwater	15
Indust.Roundwood ^{**}	1 687	Demersal	9
Paper, Paperboard [*]	20	Molluscs	-

Per Capita Agricultural Production Index



* 1000Tonnes ** 1000m³

Time reference= ⁹⁹⁻⁰¹ :1999-2001, ⁰⁰ :2000, ⁰² :2002, ⁰⁰⁻⁰² :2000-2002, ⁰³ :2003, ⁰⁴ :2004, ^{ly} :Latest Available Year

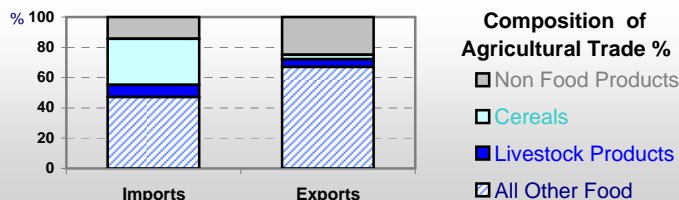


Country profiles

Costa Rica

Trade ⁰²

Agricultural Imports *	555
% 4 Major Imports in Agr.Imp	11
% Agr. Imports in Tot. Imports	8
Fishery Imports *	32
Forestry Imports *	245
Agricultural Exports *	1 591
% 4 Major Exports in Agr.Exp.	44
% Agr. Exports in Tot.Exports	30
Fishery Exports *	138
Forestry Exports *	22



Trade Partners & Products

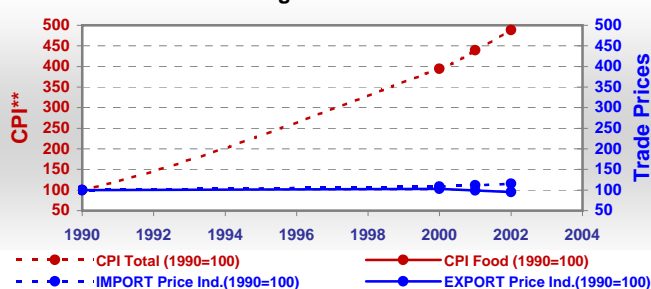
Major Import Partner	USA	Mexico	Guatemala
Major Export Partner	USA	Germany	Netherlands
Major Imports	Maize	Soybeans	Food Prep
Major Exports	Bananas	Pineapples	Coffee, Green

* Million \$

Prices

Producer Prices ⁰⁰⁻⁰²	\$*	\$ Green *
Wheat	-	-
Rice	253	229
Maize	216	195
Soybean	-	-
Coffee	1 060	962
Tobacco	1 434	1 301
Cow Milk	132	120
Cattle (Live Weight)	387	351
Pig (Live Weight)	493	447
Chicken (Live Weight)	451	409

Consumer and Agricultural Trade Price Indices

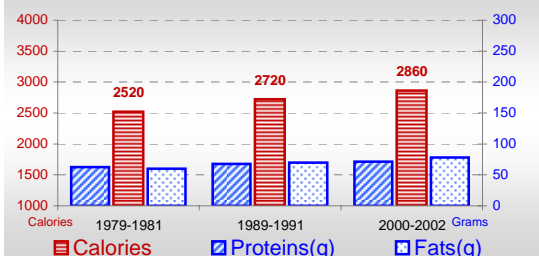


* per Tonne

** CPI : Consumer Price Index

Consumption

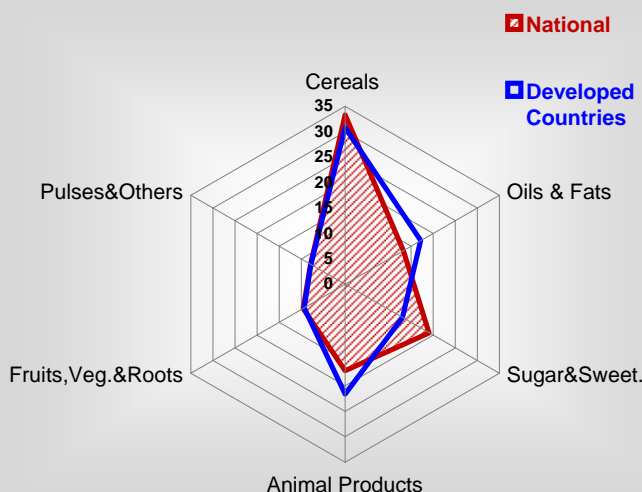
Per Capita Daily Consumption



Per Capita Daily Calorie Intake From Selected Food Items ⁰⁰⁻⁰²

Rice	537
Wheat	352
Maize	31
Sorghum	-
Potatoes	38
Cassava	5
Sugar	501
Soybean Oil	150
Palm Oil	125
Milk	294
Anim.Fats(Raw&Butter)	77
Eggs	35
Pig Meat	26
Poultry Meat	65
Bovine Meat	52
Sheep & Goats Meat	-

Source of Dietary Energy Consumption % ⁰⁰⁻⁰²



Food Balance ⁰⁰⁻⁰² (1000Tonnes)

Food Groups	Production (+)	Exports (-)	Imports (+)	Seed, Feed, Other Uses (-)	Consumption (=)
Cereals	183	78	850	508	447
Veg.oils	196	93	16	69	50
Sugar&Sw.	378	149	16	17	228
Roots&Tub.	216	211	21	-72	98
Meat	186	23	6	-3	172
Milk	763	44	34	60	693

Time reference= ⁹⁹⁻⁰¹:1999-2001, ⁰⁰:2000, ⁰²:2002, ⁰⁰⁻⁰²:2000-2002, ⁰³:2003, ⁰⁴:2004, ^{ly}:Latest Available Year