



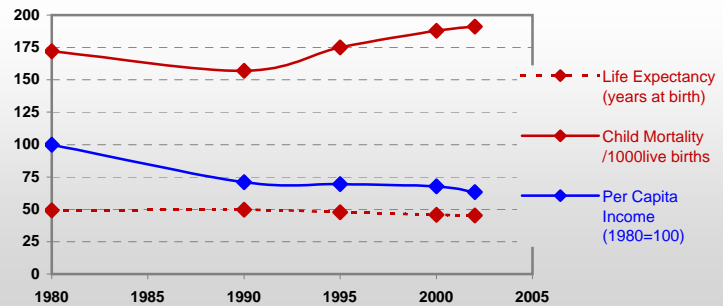
Country profiles

Côte d' Ivoire



General / Welfare

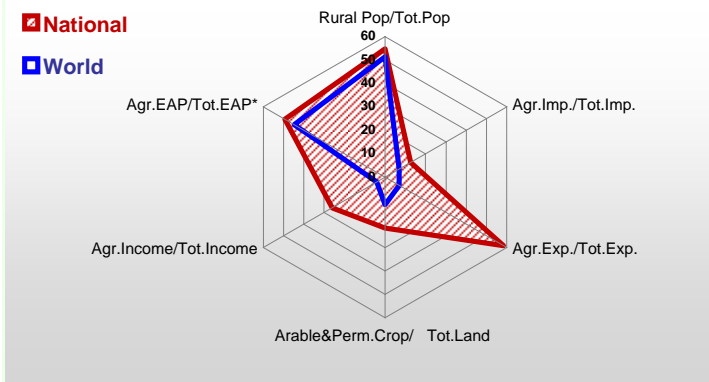
Population ⁰⁴ *	16 897
Per Capita Income ⁰² **	776
Per Capita Agricultural Income ⁰² **	436
Total Exports ⁰² ****	5 167
Total Imports ⁰² ****	3 700
Agric. External Assistance ⁹⁹⁻⁰¹ ***	96 811
Food Consumption Inequality (G) ^{ly}	0,16
Income Inequality (G) ^{ly}	0,45
Land Inequality (G) ^{ly}	-
Undernourished Population % ⁰⁰⁻⁰²	14



* 1000 ** \$ *** 1000 \$ **** Million \$ --- (G) : Gini Coefficient --- Income refers to GDP at 1995 Constant Prices

Agriculture In The Economy ^{ly}

Resources

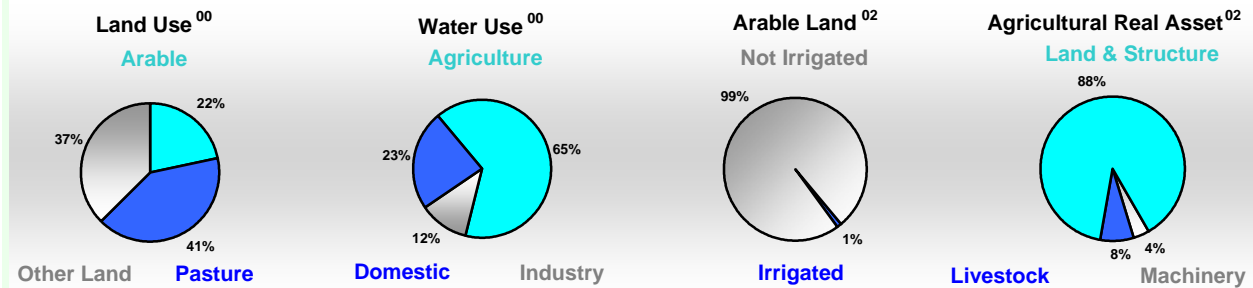


Arable Land ⁰⁰ *	3 100
Permanent Crops ⁰⁰ *	3 800
Pasture ⁰⁰ *	13 000
Cattle & Buffaloes ⁰³ **	1 480
Sheep & Goats ⁰³ **	2 715
Tractors ⁰² *	1
Harvesters&Threshers ⁰² *	0
Fertilizers Production ⁰² ***	-
Fertilizers Consumption ⁰² ***	109 000
Rainfall Index ⁰² (mm)	-

* EAP : Economically Active Population

* 1000ha ** 1000heads *** Tonnes N,P₂O₅,K₂O

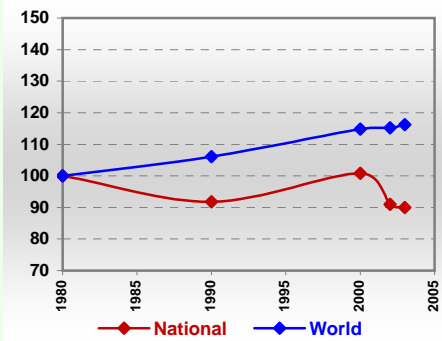
Resources Distribution



Production

Agriculture ⁰³ *		Pulpwd.,Rnd&Split **	-
Cereals	1 560	Roundwood **	11 581
Meat	170	Log:Saw&Veneer **	2 084
Fruits & Vegetables	2 634	Sawnwood **	620
Roots & Tubers	5 113	Wood Charcoal *	49
Pulses	9	Woodfuel **	8 581
Oilseeds & Nuts	505	Wood Pulp *	-
Sugar Crops	1 045	Wood-based Panels **	323
Tobacco	10	Fisheries ⁰² *	
Fibre Crops	152	Pelagic	23
Forestry ⁰²		Freshwater	23
Indust.Roundwood **	3 000	Demersal	6
Paper, Paperboard *	-	Molluscs	0

Per Capita Agricultural Production Index



* 1000Tonnes ** 1000m³

Time reference= ⁹⁹⁻⁰¹ :1999-2001, ⁰⁰ :2000, ⁰² :2002, ⁰⁰⁻⁰² :2000-2002, ⁰³ :2003, ⁰⁴ :2004, ^{ly} :Latest Available Year

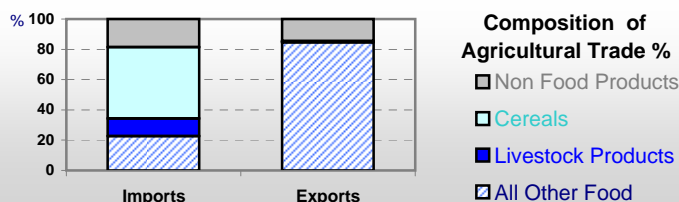


Country profiles

Côte d' Ivoire

Trade ⁰²

Agricultural Imports *	461
% 4 Major Imports in Agr.Imp	41
% Agr. Imports in Tot. Imports	12
Fishery Imports *	180
Forestry Imports *	38
Agricultural Exports *	3 006
% 4 Major Exports in Agr.Exp.	71
% Agr. Exports in Tot.Exports	58
Fishery Exports *	140
Forestry Exports *	183



Trade Partners & Products

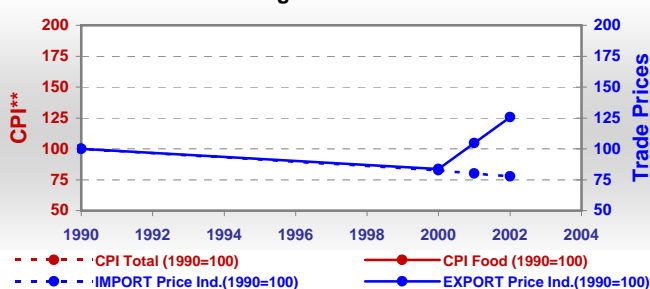
Major Import Partner	France	India	Thailand
Major Export Partner	Netherlands	France	USA
Major Imports	Mil Rice	Wheat	Cattle
Major Exports	Cocoa Beans	Cocoa Paste	Cocoa Butter

* Million \$

Prices

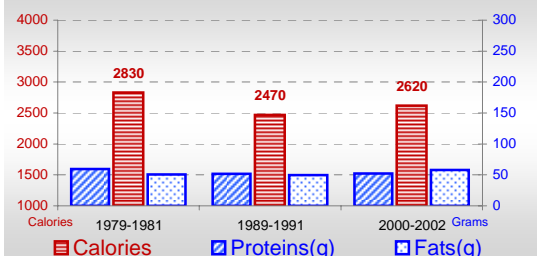
Producer Prices ⁰⁰⁻⁰²	\$*	\$ Green *
Wheat	-	-
Rice	154	184
Maize	121	144
Soybean	76	90
Coffee	466	559
Tobacco	280	335
Cow Milk	225	268
Cattle (Live Weight)	1 099	1 310
Pig (Live Weight)	1 029	1 227
Chicken (Live Weight)	1 379	1 645

Consumer and Agricultural Trade Price Indices

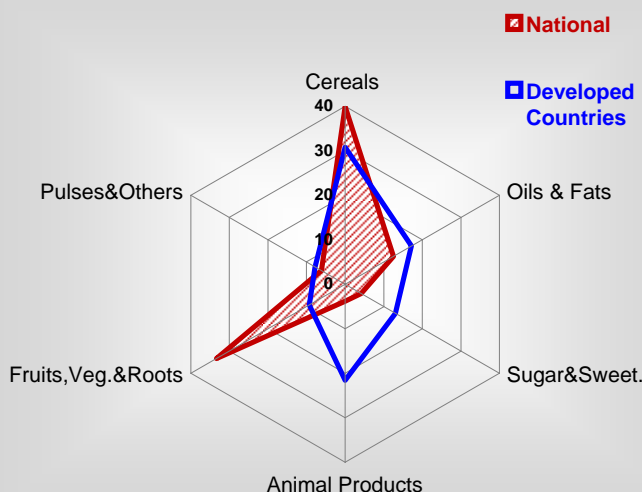


Consumption

Per Capita Daily Consumption



Source of Dietary Energy Consumption % ⁰⁰⁻⁰²



Per Capita Daily Calorie Intake From Selected Food Items ⁰⁰⁻⁰²

Rice	597
Wheat	155
Maize	246
Sorghum	13
Potatoes	2
Cassava	285
Sugar	105
Soybean Oil	3
Palm Oil	242
Milk	12
Anim.Fats(Raw&Butter)	4
Eggs	6
Pig Meat	8
Poultry Meat	14
Bovine Meat	17
Sheep & Goats Meat	2

Food Balance ^{00-02 (1000Tonnes)}

Food Groups	Production (+)	Exports (-)	Imports (+)	Seed, Feed, Other Uses (-)	Consumption (=)
Cereals	1 443	45	1 034	541	1 891
Veg.oils	374	149	26	34	217
Sugar&Sw.	178	55	39	-17	179
Roots&Tub.	-	-	-	0	-
Meat	166	-	9	1	174
Milk	25	50	118	-15	108

Time reference= ⁹⁹⁻⁰¹:1999-2001, ⁰⁰:2000, ⁰²:2002, ⁰⁰⁻⁰²:2000-2002, ⁰³:2003, ⁰⁴:2004, ^{ly}:Latest Available Year