



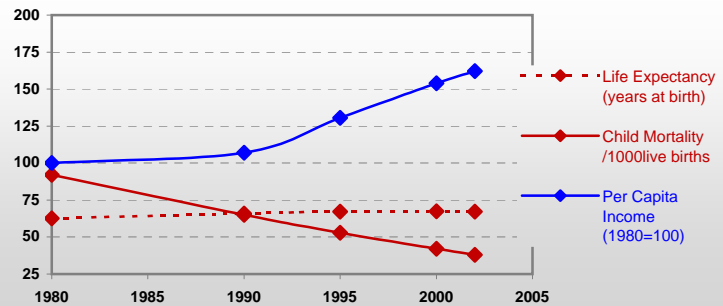
Country profiles

Dominican Rep.



General / Welfare

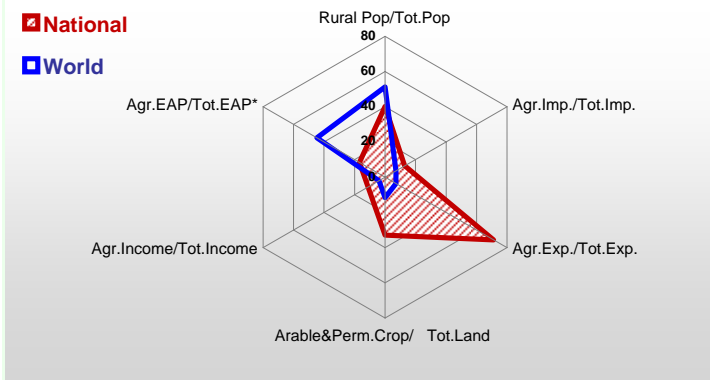
Population ^{04 *}	8 872
Per Capita Income ^{02 **}	2 254
Per Capita Agricultural Income ^{02**}	1 549
Total Exports ^{02 ****}	848
Total Imports ^{02 ****}	6 237
Agric. External Assistance ^{99-01 ***}	116 103
Food Consumption Inequality (G) ^{ly}	0,13
Income Inequality (G) ^{ly}	0,47
Land Inequality (G) ^{ly}	-
Undernourished Population % ⁰⁰⁻⁰²	25



* 1000 ** \$ **** Million \$ --- (G): Gini Coefficient --- Income refers to GDP at 1995 Constant Prices

Agriculture In The Economy^{ly}

Resources

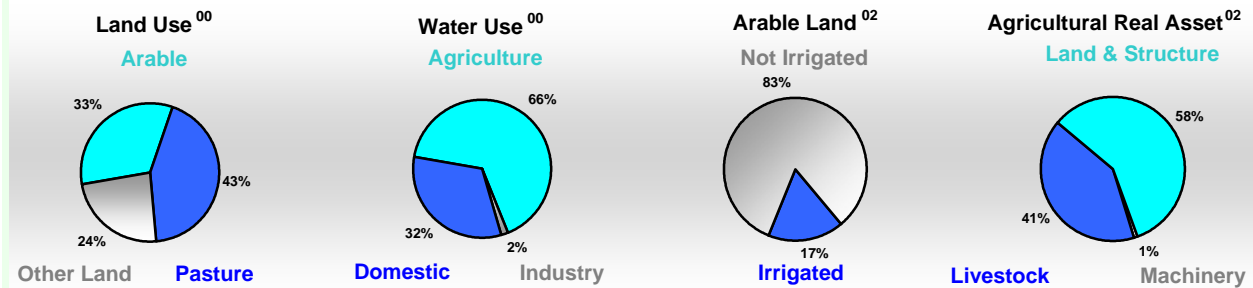


Arable Land ^{00 *}	1 096
Permanent Crops ^{00 *}	500
Pasture ^{00 *}	2 100
Cattle & Buffaloes ^{03 **}	2 160
Sheep & Goats ^{03 **}	311
Tractors ^{02 *}	2
Harvesters&Threshers ^{02 *}	-
Fertilizers Production ^{02 ***}	-
Fertilizers Consumption ^{02 ***}	89 703
Rainfall Index ^{02 (mm)}	821

* EAP: Economically Active Population

* 1000ha ** 1000heads *** Tonnes N,P₂O₅,K₂O

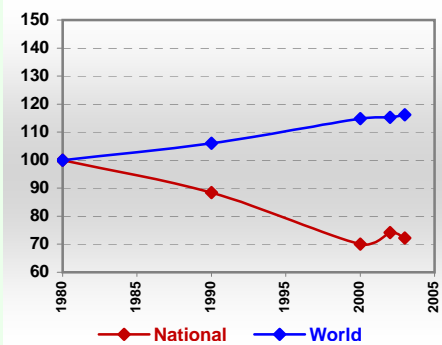
Resources Distribution



Production

Agriculture^{03 *}		Pulpwd.,Rnd&Split ^{**}	-
Cereals	656	Roundwood ^{**}	562
Meat	324	Log:Saw&Veneer ^{**}	4
Fruits & Vegetables	1 643	Sawnwood ^{**}	-
Roots & Tubers	311	Wood Charcoal [*]	70
Pulses	53	Woodfuel ^{**}	556
Oilseeds & Nuts	55	Wood Pulp [*]	-
Sugar Crops	5 019	Wood-based Panels ^{**}	-
Tobacco	19	Fisheries^{02 *}	
Fibre Crops	1	Pelagic	3
Forestry⁰²		Freshwater	5
Indust.Roundwood ^{**}	6	Demersal	5
Paper, Paperboard [*]	130	Molluscs	4

Per Capita Agricultural Production Index



* 1000Tonnes ** 1000m³

Time reference= ⁹⁹⁻⁰¹:1999-2001, ⁰⁰:2000, ⁰²:2002, ⁰⁰⁻⁰²:2000-2002, ⁰³:2003, ⁰⁴:2004, ^{ly}:Latest Available Year

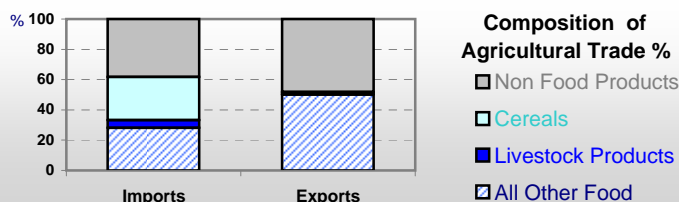


Country profiles

Dominican Rep.

Trade ⁰²

Agricultural Imports *	810
% 4 Major Imports in Agr.Imp	28
% Agr. Imports in Tot. Imports	13
Fishery Imports *	72
Forestry Imports *	194
Agricultural Exports *	603
% 4 Major Exports in Agr.Exp.	24
% Agr. Exports in Tot.Exports	71
Fishery Exports *	2
Forestry Exports *	1



Trade Partners & Products

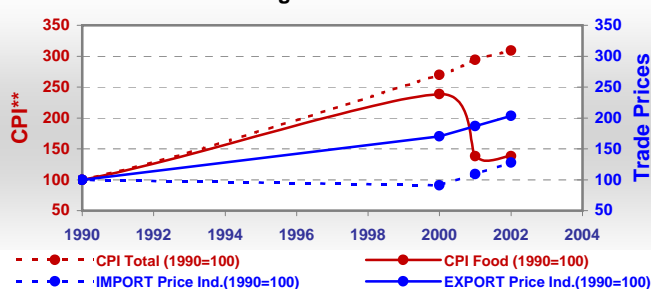
Major Import Partner			
Major Export Partner			
Major Imports	Tobacco	Maize	Cake Soybean
Major Exports	Cigars	Sugar,C. Raw	Cocoa Beans

* Million \$

Prices

Producer Prices ⁰⁰⁻⁰²	\$*	\$ Green *
Wheat	-	-
Rice	513	384
Maize	226	170
Soybean	-	-
Coffee	1 061	795
Tobacco	935	703
Cow Milk	182	138
Cattle (Live Weight)	1 629	1 226
Pig (Live Weight)	1 515	1 142
Chicken (Live Weight)	1 086	820

Consumer and Agricultural Trade Price Indices

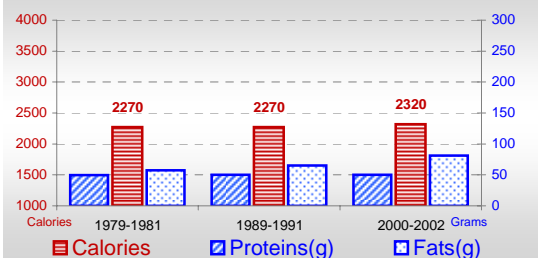


* per Tonne

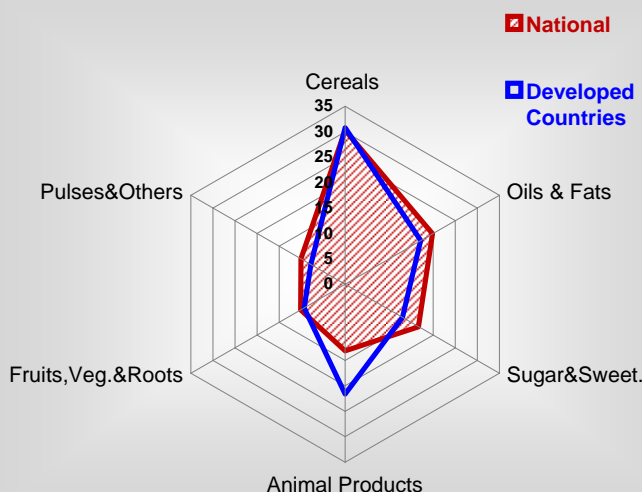
** CPI : Consumer Price Index

Consumption

Per Capita Daily Consumption



Source of Dietary Energy Consumption % ⁰⁰⁻⁰²



Per Capita Daily Calorie Intake From Selected Food Items ⁰⁰⁻⁰²

Rice	418
Wheat	203
Maize	79
Sorghum	-
Potatoes	9
Cassava	36
Sugar	385
Soybean Oil	256
Palm Oil	104
Milk	96
Anim.Fats(Raw&Butter)	40
Eggs	24
Pig Meat	28
Poultry Meat	82
Bovine Meat	49
Sheep & Goats Meat	1

Food Balance ⁰⁰⁻⁰² (1000Tonnes)

Food Groups	Production (+)	Exports (-)	Imports (+)	Seed, Feed, Other Uses (-)	Consumption (=)
Cereals	490	10	1 447	1 249	678
Veg.oils	40	5	144	31	148
Sugar&Sw.	480	214	53	-22	341
Roots&Tub.	271	31	1	30	211
Meat	334	-	4	0	338
Milk	445	-	95	23	517

Time reference= ⁹⁹⁻⁰¹:1999-2001, ⁰⁰:2000, ⁰²:2002, ⁰⁰⁻⁰²:2000-2002, ⁰³:2003, ⁰⁴:2004, ^{ly}:Latest Available Year