



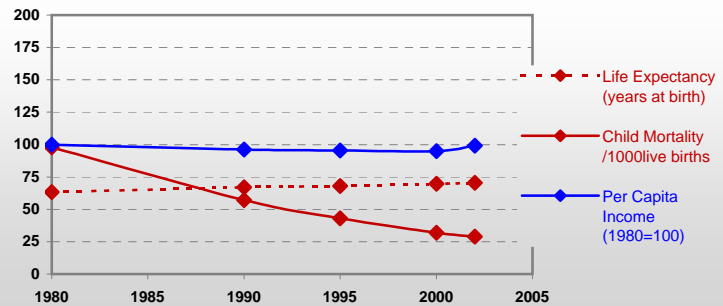
Country profiles

Ecuador



General / Welfare

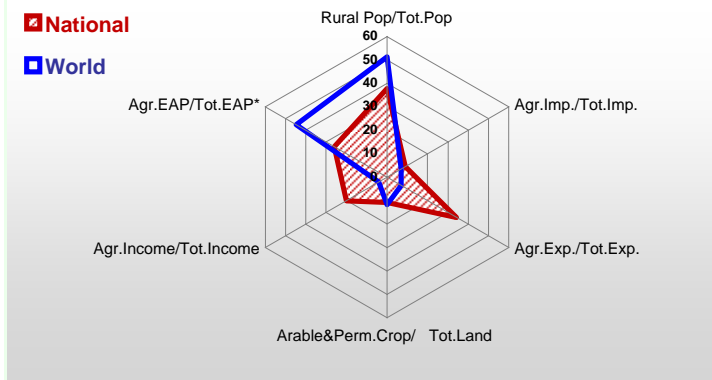
Population ^{04 *}	13 192
Per Capita Income ^{02 **}	1 796
Per Capita Agricultural Income ^{02**}	1 362
Total Exports ^{02 ****}	5 030
Total Imports ^{02 ****}	6 431
Agric. External Assistance ^{99-01 ***}	156 897
Food Consumption Inequality (G) ^{ly}	0,13
Income Inequality (G) ^{ly}	0,44
Land Inequality (G) ^{ly}	-
Undernourished Population % ⁰⁰⁻⁰²	4



*1000 ** \$ **** 1000 \$ ***** Million \$ --- (G) : Gini Coefficient --- Income refers to GDP at 1995 Constant Prices

Agriculture In The Economy^{ly}

Resources

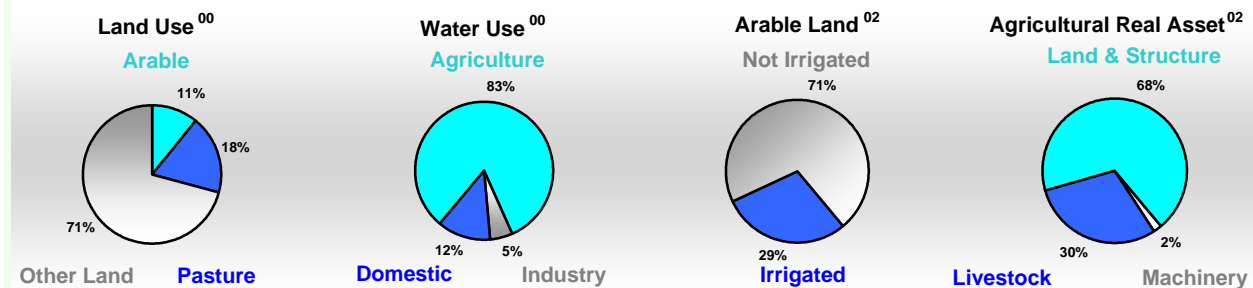


Arable Land ^{00 *}	1 616
Permanent Crops ^{00 *}	1 363
Pasture ^{00 *}	5 087
Cattle & Buffaloes ^{03 **}	4 977
Sheep & Goats ^{03 **}	2 924
Tractors ^{02 *}	9
Harvesters&Threshers ^{02 *}	1
Fertilizers Production ^{02 ***}	-
Fertilizers Consumption ^{02 ***}	229 522
Rainfall Index ^{02 (mm)}	2 320

* EAP : Economically Active Population

* 1000ha ** 1000heads *** Tonnes N,P₂O₅,K₂O

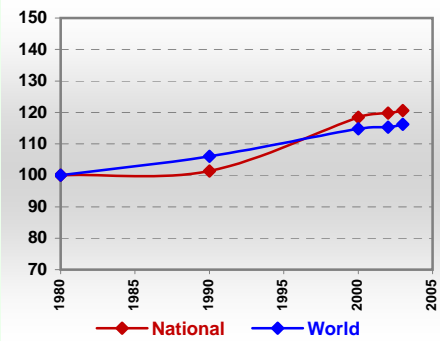
Resources Distribution



Production

Agriculture^{03 *}	Pulpwd.,Rnd&Split ^{**}	913
Cereals	Roundwood ^{**}	6 187
Meat	Log:Saw&Veneer ^{**}	-
Fruits & Vegetables	Sawnwood ^{**}	750
Roots & Tubers	Wood Charcoal [*]	104
Pulses	Woodfuel ^{**}	5 274
Oilseeds & Nuts	Wood Pulp [*]	2
Sugar Crops	Wood-based Panels ^{**}	270
Tobacco	Fisheries^{02 *}	
Fibre Crops	Pelagic	268
Forestry⁰²	Freshwater	9
Indust.Roundwood ^{**}	Demersal	9
Paper, Paperboard [*]	Molluscs	0

Per Capita Agricultural Production Index



* 1000Tonnes ** 1000m³

Time reference= ⁹⁹⁻⁰¹ :1999-2001, ⁰⁰ :2000, ⁰² :2002, ⁰⁰⁻⁰² :2000-2002, ⁰³ :2003, ⁰⁴ :2004, ^{ly} :Latest Available Year



Country profiles

Ecuador

Trade ⁰²

Agricultural Imports *	579
% 4 Major Imports in Agr.Imp	17
% Agr. Imports in Tot. Imports	9
Fishery Imports *	25
Forestry Imports *	277
Agricultural Exports *	1 724
% 4 Major Exports in Agr.Exp.	61
% Agr. Exports in Tot.Exports	34
Fishery Exports *	700
Forestry Exports *	69



Trade Partners & Products

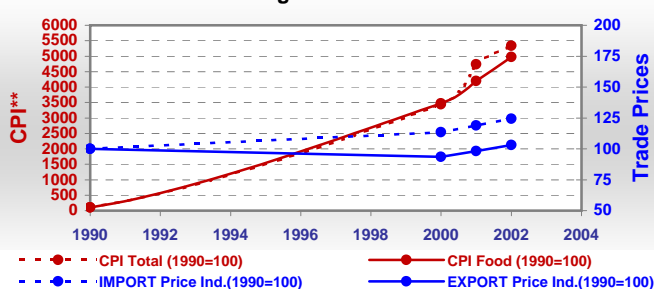
Major Import Partner	USA	Chile	Colombia
Major Export Partner	USA	Italy	Russian Fed
Major Imports	Wheat	Food Prep	Cake Soybean
Major Exports	Bananas	Cocoa Beans	Fruit Pr nes

* Million \$

Prices

Producer Prices ⁰⁰⁻⁰²	\$*	\$ Green *
Wheat	216	249
Rice	142	164
Maize	434	501
Soybean	224	259
Coffee	90	104
Tobacco	849	980
Cow Milk	236	273
Cattle (Live Weight)	1 293	1 492
Pig (Live Weight)	1 516	1 749
Chicken (Live Weight)	1 506	1 737

Consumer and Agricultural Trade Price Indices

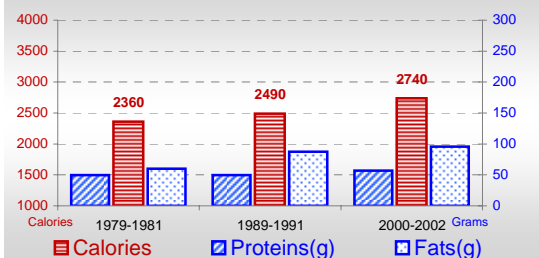


* per Tonne

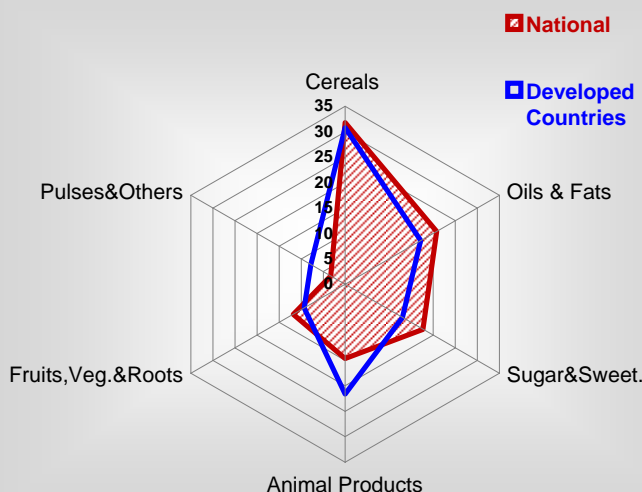
** CPI : Consumer Price Index

Consumption

Per Capita Daily Consumption



Source of Dietary Energy Consumption % ⁰⁰⁻⁰²



Per Capita Daily Calorie Intake From Selected Food Items ⁰⁰⁻⁰²

Rice	462
Wheat	275
Maize	107
Sorghum	-
Potatoes	45
Cassava	13
Sugar	478
Soybean Oil	125
Palm Oil	345
Milk	171
Anim.Fats(Raw&Butter)	80
Eggs	13
Pig Meat	35
Poultry Meat	68
Bovine Meat	89
Sheep & Goats Meat	3

Food Balance ⁰⁰⁻⁰² (1000Tonnes)

Food Groups	Production (+)	Exports (-)	Imports (+)	Seed, Feed, Other Uses (-)	Consumption (=)
Cereals	1 411	135	768	765	1 279
Veg.oils	319	47	75	92	255
Sugar&Sw.	559	48	43	-75	629
Roots&Tub.	485	31	7	100	360
Meat	538	5	3	0	536
Milk	2 299	3	11	1 075	1 232

Time reference= ⁹⁹⁻⁰¹:1999-2001, ⁰⁰:2000, ⁰²:2002, ⁰⁰⁻⁰²:2000-2002, ⁰³:2003, ⁰⁴:2004, ^{ly}:Latest Available Year