



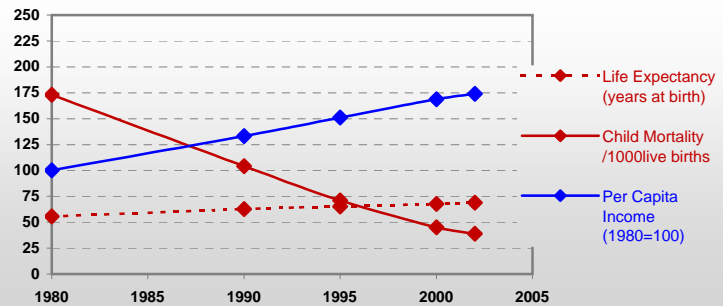
Country profiles

Egypt



General / Welfare

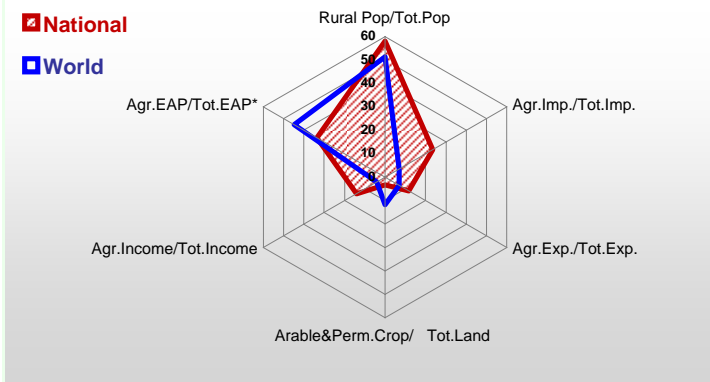
Population ^{04 *}	73 390
Per Capita Income ^{02 **}	1 250
Per Capita Agricultural Income ^{02**}	477
Total Exports ^{02 ****}	6 643
Total Imports ^{02 ****}	14 644
Agric. External Assistance ^{99-01 ***}	752 205
Food Consumption Inequality (G) ^{ly}	0,16
Income Inequality (G) ^{ly}	0,34
Land Inequality (G) ^{ly}	0,65
Undernourished Population % ⁰⁰⁻⁰²	3



* 1000 ** \$ *** 1000 \$ **** Million \$ --- (G) : Gini Coefficient --- Income refers to GDP at 1995 Constant Prices

Agriculture In The Economy^{ly}

Resources

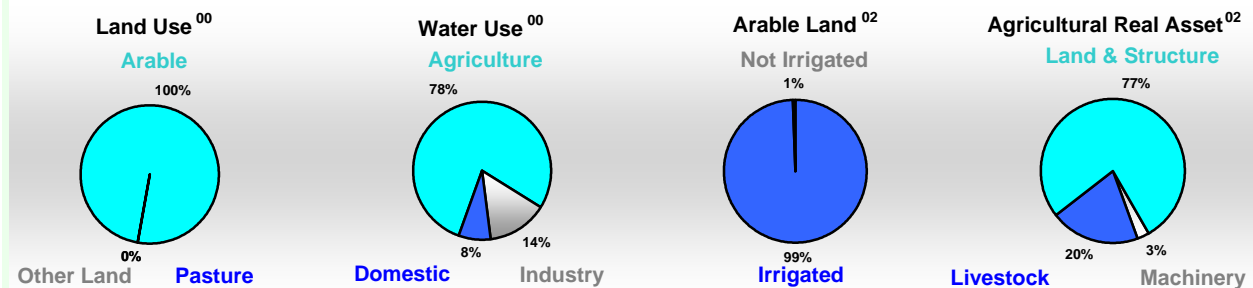


Arable Land ^{00 *}	2 821
Permanent Crops ^{00 *}	470
Pasture ^{00 *}	-
Cattle & Buffaloes ^{03 **}	7 370
Sheep & Goats ^{03 **}	8 142
Tractors ^{02 *}	31
Harvesters&Threshers ^{02 *}	1
Fertilizers Production ^{02 ***}	1 735 386
Fertilizers Consumption ^{02 ***}	1 268 803
Rainfall Index ^{02 (mm)}	107

* EAP : Economically Active Population

* 1000ha ** 1000heads *** Tonnes N,P₂O₅,K₂O

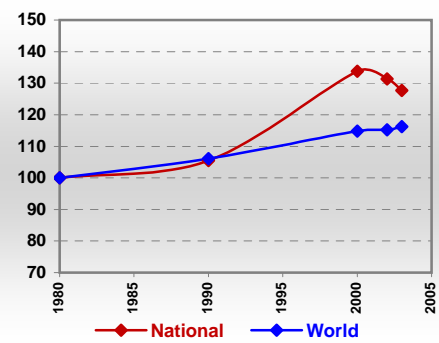
Resources Distribution



Production

Agriculture ^{03 *}		Forestry ⁰²		Fisheries ^{02 *}	
Cereals	19 796	Indust.Roundwood ^{**}	268	Pelagic	38
Meat	1 490	Paper, Paperboard [*]	460	Freshwater	513
Fruits & Vegetables	22 328			Demersal	196
Roots & Tubers	2 391			Molluscs	5
Pulses	491				
Oilseeds & Nuts	255				
Sugar Crops	19 026				
Tobacco	-				
Fibre Crops	211				
Pulpwd.,Rnd&Split ^{**}	-				
Roundwood ^{**}	16 752				
Log:Saw&Veneer ^{**}	134				
Sawnwood ^{**}	4				
Wood Charcoal [*]	1 232				
Woodfuel ^{**}	16 484				
Wood Pulp [*]	-				
Wood-based Panels ^{**}	131				

Per Capita Agricultural Production Index



* 1000Tonnes ** 1000m³

Time reference=⁹⁹⁻⁰¹:1999-2001, ⁰⁰:2000, ⁰²:2002, ⁰⁰⁻⁰²:2000-2002, ⁰³:2003, ⁰⁴:2004, ^{ly}:Latest Available Year



Country profiles

Egypt

Trade ⁰²

Agricultural Imports *	3 437
% 4 Major Imports in Agr.Imp	24
% Agr. Imports in Tot. Imports	23
Fishery Imports *	107
Forestry Imports *	707
Agricultural Exports *	774
% 4 Major Exports in Agr.Exp.	65
% Agr. Exports in Tot.Exports	12
Fishery Exports *	2
Forestry Exports *	40



Trade Partners & Products

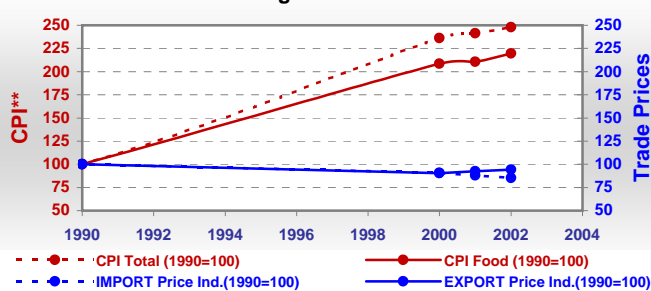
Major Import Partner	USA	Brazil	Australia
Major Export Partner	Italy	India	Saudi Arabia
Major Imports	Wheat	Maize	Cake Soybean
Major Exports	Cotton Lint	Mil Rice	Potatoes

* Million \$

Prices

Producer Prices ⁰⁰⁻⁰²	\$*	\$ Green *
Wheat	179	184
Rice	155	161
Maize	156	161
Soybean	278	287
Coffee	-	-
Tobacco	-	-
Cow Milk	332	342
Cattle (Live Weight)	1 968	2 035
Pig (Live Weight)	2 619	2 716
Chicken (Live Weight)	1 395	1 436

Consumer and Agricultural Trade Price Indices

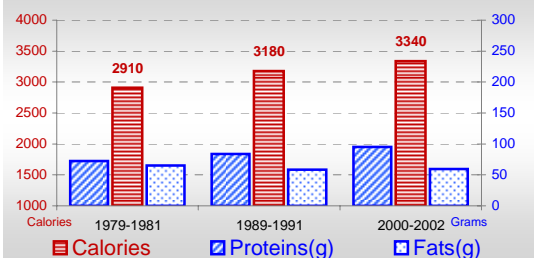


* per Tonne

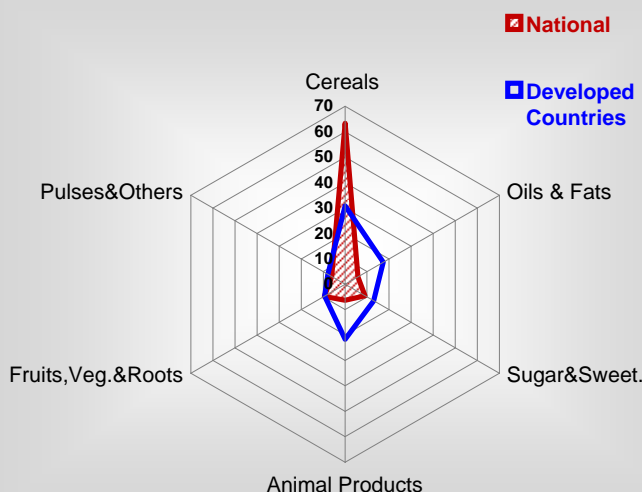
** CPI : Consumer Price Index

Consumption

Per Capita Daily Consumption



Source of Dietary Energy Consumption % ⁰⁰⁻⁰²



Per Capita Daily Calorie Intake From Selected Food Items ⁰⁰⁻⁰²

Rice	401
Wheat	1085
Maize	587
Sorghum	40
Potatoes	39
Cassava	-
Sugar	293
Soybean Oil	37
Palm Oil	-
Milk	73
Anim.Fats(Raw&Butter)	51
Eggs	9
Pig Meat	-
Poultry Meat	37
Bovine Meat	37
Sheep & Goats Meat	10

Food Balance ⁰⁰⁻⁰² (1000Tonnes)

Food Groups	Production (+)	Exports (-)	Imports (+)	Seed, Feed, Other Uses (-)	Consumption (=)
Cereals	17 659	507	9 812	10 761	16 203
Veg.oils	166	25	558	288	411
Sugar&Sw.	1 556	24	535	-37	2 104
Roots&Tub.	2 199	214	55	447	1 592
Meat	1 422	1	146	-1	1 568
Milk	3 963	22	294	751	3 484

Time reference= ⁹⁹⁻⁰¹:1999-2001, ⁰⁰:2000, ⁰²:2002, ⁰⁰⁻⁰²:2000-2002, ⁰³:2003, ⁰⁴:2004, ^{ly}:Latest Available Year