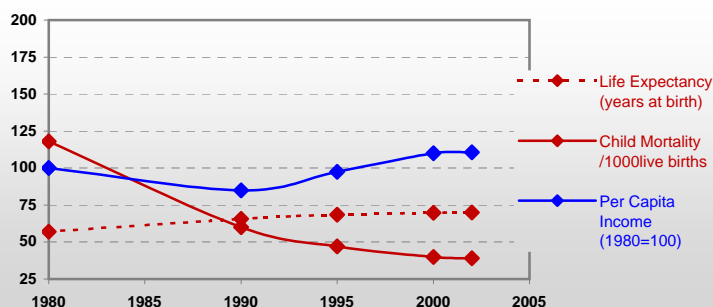


## El Salvador



### General / Welfare

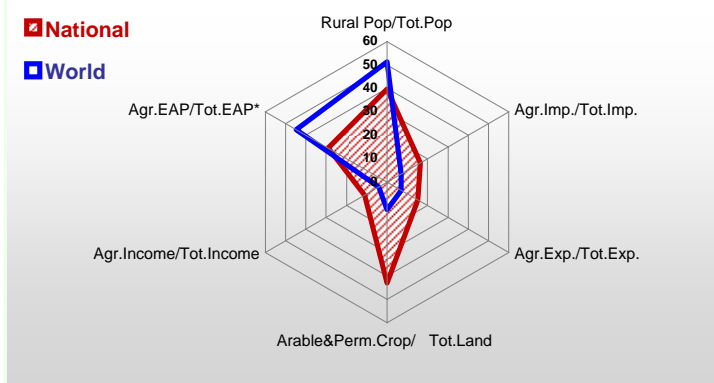
Population <sup>04 *</sup>	6 614
Per Capita Income <sup>02 **</sup>	1 787
Per Capita Agricultural Income <sup>02**</sup>	641
Total Exports <sup>02 ****</sup>	2 950
Total Imports <sup>02 ****</sup>	5 080
Agric. External Assistance <sup>99-01 ***</sup>	200 285
Food Consumption Inequality (G) <sup>ly</sup>	0,14
Income Inequality (G) <sup>ly</sup>	0,53
Land Inequality (G) <sup>ly</sup>	-
Undernourished Population % <sup>00-02</sup>	11



\* 1000 \*\* \$ \*\*\*\* Million \$ --- (G): Gini Coefficient --- Income refers to GDP at 1995 Constant Prices

### Agriculture In The Economy<sup>ly</sup>

### Resources

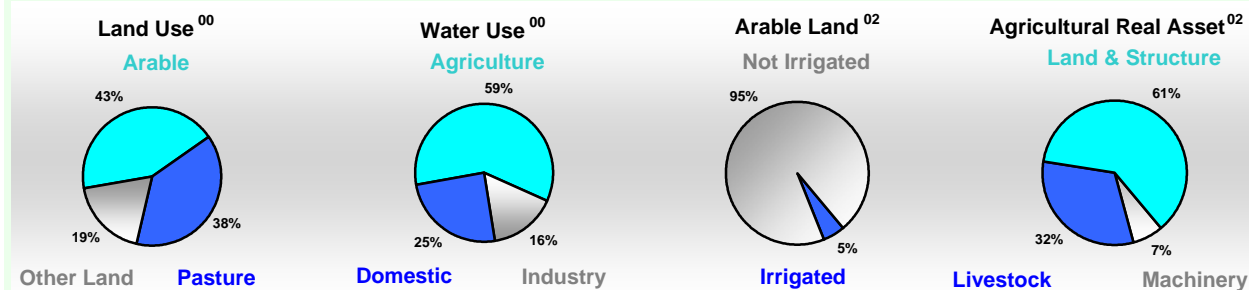


Arable Land <sup>00 *</sup>	640
Permanent Crops <sup>00 *</sup>	250
Pasture <sup>00 *</sup>	794
Cattle & Buffaloes <sup>03 **</sup>	1 000
Sheep & Goats <sup>03 **</sup>	16
Tractors <sup>02 *</sup>	5
Harvesters&Threshers <sup>02 *</sup>	1
Fertilizers Production <sup>02 ***</sup>	-
Fertilizers Consumption <sup>02 ***</sup>	55 333
Rainfall Index <sup>02 (mm)</sup>	1 305

\* EAP: Economically Active Population

\* 1000ha \*\* 1000heads \*\*\* Tonnes N,P<sub>2</sub>O<sub>5</sub>,K<sub>2</sub>O

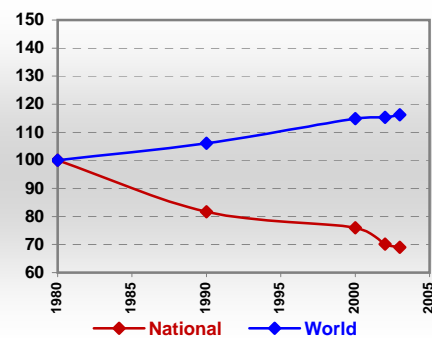
### Resources Distribution



### Production

<b>Agriculture<sup>03 *</sup></b>		<b>Forestry<sup>02</sup></b>	
Cereals	791	Indust.Roundwood **	682
Meat	117	Paper, Paperboard *	56
Fruits & Vegetables	421		
Roots & Tubers	83		
Pulses	83		
Oilseeds & Nuts	9		
Sugar Crops	4 532		
Tobacco	1		
Fibre Crops	6		
		<b>Fisheries<sup>02 *</sup></b>	
		Pulpwd.,Rnd&Split **	-
		Roundwood **	5 200
		Log:Saw&Veneer **	682
		Sawnwood **	58
		Wood Charcoal *	19
		Woodfuel **	4 518
		Wood Pulp *	-
		Wood-based Panels **	-
		Pelagic	15
		Freshwater	3
		Demersal	3
		Molluscs	1

### Per Capita Agricultural Production Index



\* 1000Tonnes \*\* 1000m<sup>3</sup>

Time reference= <sup>99-01</sup>:1999-2001, <sup>00</sup>:2000, <sup>02</sup>:2002, <sup>00-02</sup>:2000-2002, <sup>03</sup>:2003, <sup>04</sup>:2004, <sup>ly</sup>:Latest Available Year

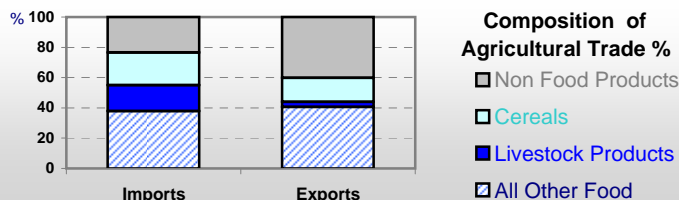


# Country profiles

## El Salvador

### Trade <sup>02</sup>

Agricultural Imports *	834
% 4 Major Imports in Agr.Imp	23
% Agr. Imports in Tot. Imports	16
Fishery Imports *	7
Forestry Imports *	157
Agricultural Exports *	445
% 4 Major Exports in Agr.Exp.	39
% Agr. Exports in Tot.Exports	15
Fishery Exports *	22
Forestry Exports *	11



### Trade Partners & Products

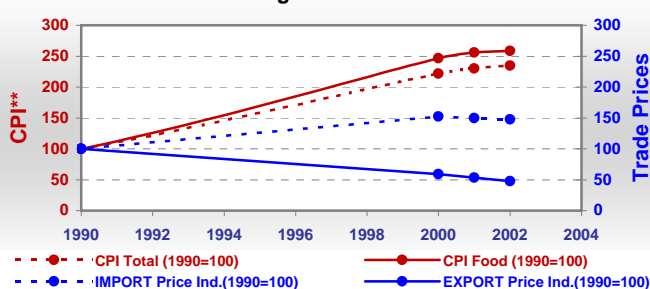
Major Import Partner	USA	Guatemala	Nicaragua
Major Export Partner	Guatemala	USA	Honduras
Major Imports	Food Prep	Maize	Wheat
Major Exports	Coffee,Green	Sugar,C. Raw	Food Prep

\* Million \$

### Prices

Producer Prices <sup>00-02</sup>	\$*	\$ Green *
Wheat	-	-
Rice	209	172
Maize	212	175
Soybean	347	287
Coffee	618	510
Tobacco	2 751	2 271
Cow Milk	387	319
Cattle (Live Weight)	1 265	1 044
Pig (Live Weight)	1 328	1 096
Chicken (Live Weight)	1 620	1 337

### Consumer and Agricultural Trade Price Indices

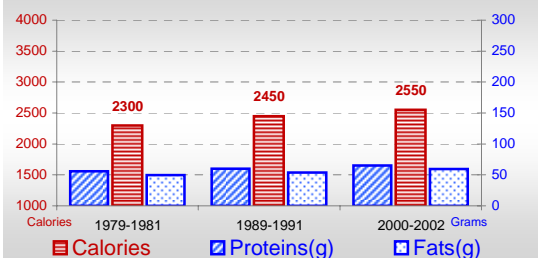


\* per Tonne

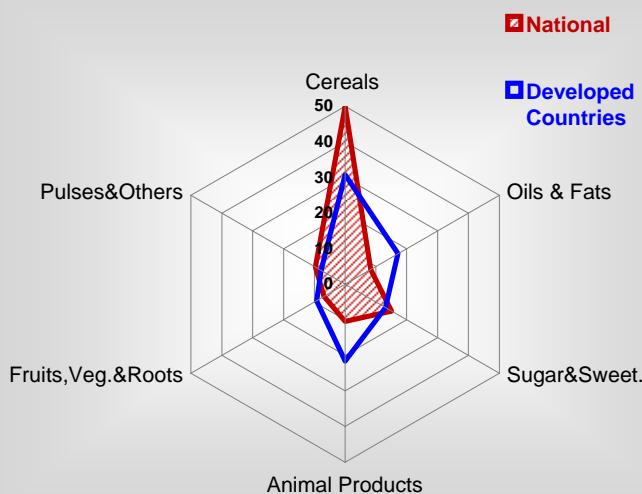
\*\* CPI : Consumer Price Index

### Consumption

#### Per Capita Daily Consumption



#### Source of Dietary Energy Consumption % <sup>00-02</sup>



#### Per Capita Daily Calorie Intake From Selected Food Items <sup>00-02</sup>

Rice	100
Wheat	228
Maize	798
Sorghum	145
Potatoes	20
Cassava	7
Sugar	355
Soybean Oil	76
Palm Oil	-
Milk	148
Anim.Fats(Raw&Butter)	66
Eggs	29
Pig Meat	9
Poultry Meat	41
Bovine Meat	28
Sheep & Goats Meat	-

#### Food Balance <sup>00-02 (1000Tonnes)</sup>

Food Groups	Production (+)	Exports (-)	Imports (+)	Seed, Feed, Other Uses (-)	Consumption (=)
Cereals	772	94	768	565	881
Veg.oils	5	15	101	53	38
Sugar&Sw.	523	294	18	-1	248
Roots&Tub.	88	1	57	14	131
Meat	119	3	20	0	136
Milk	393	6	198	20	565

Time reference= <sup>99-01</sup>:1999-2001, <sup>00</sup>:2000, <sup>02</sup>:2002, <sup>00-02</sup>:2000-2002, <sup>03</sup>:2003, <sup>04</sup>:2004, <sup>ly</sup>:Latest Available Year