



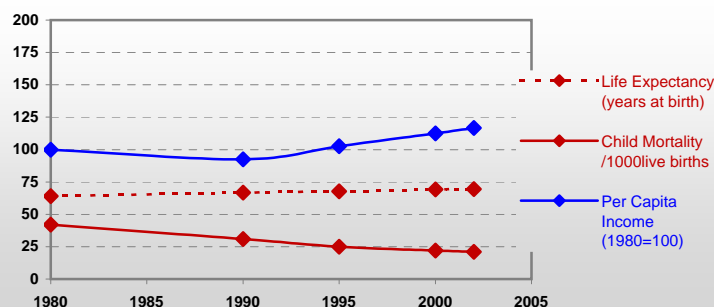
Country profiles

Fiji



General / Welfare

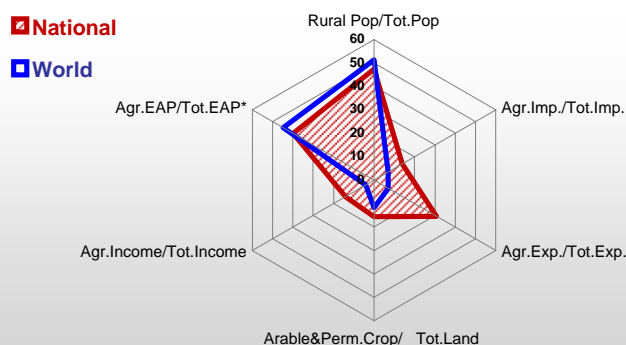
Population ^{04 *}	847
Per Capita Income ^{02 **}	2 840
Per Capita Agricultural Income ^{02**}	1 012
Total Exports ^{02 ****}	548
Total Imports ^{02 ****}	896
Agric. External Assistance ^{99-01 ***}	1 329
Food Consumption Inequality (G) ^{ly}	0,13
Income Inequality (G) ^{ly}	-
Land Inequality (G) ^{ly}	0,77
Undernourished Population % ⁰⁰⁻⁰²	-



*1000 ** \$ **** Million \$ --- (G) : Gini Coefficient --- Income refers to GDP at 1995 Constant Prices

Agriculture In The Economy^{ly}

Resources

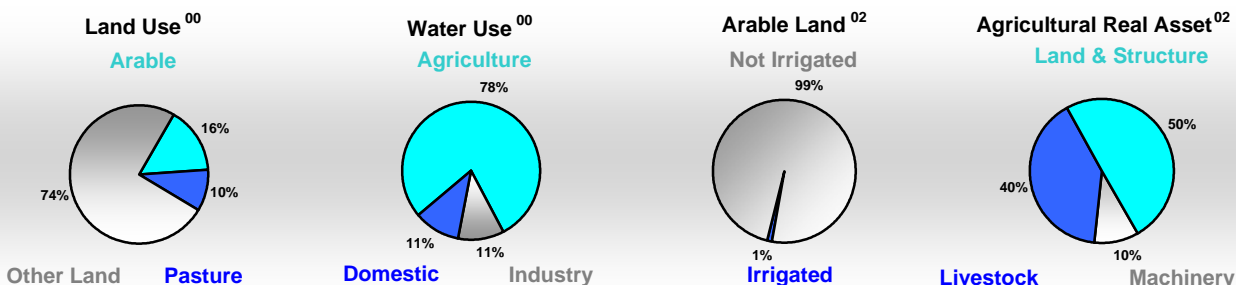


Arable Land ^{00 *}	200
Permanent Crops ^{00 *}	85
Pasture ^{00 *}	175
Cattle & Buffaloes ^{03 **}	320
Sheep & Goats ^{03 **}	254
Tractors ^{02 *}	35
Harvesters&Threshers ^{02 *}	-
Fertilizers Production ^{02 ***}	-
Fertilizers Consumption ^{02 ***}	12 290
Rainfall Index ^{02 (mm)}	2 376

* EAP : Economically Active Population

* 1000ha ** 1000heads *** Tonnes N,P₂O₅,K₂O

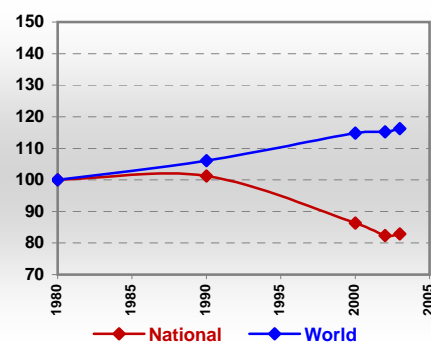
Resources Distribution



Production

Agriculture^{03 *}		
Cereals	17	Pulpwd.,Rnd&Split ^{**}
Meat	20	Roundwood ^{**}
Fruits & Vegetables	44	Log:Saw&Veneer ^{**}
Roots & Tubers	86	Sawnwood ^{**}
Pulses	1	Wood Charcoal [*]
Oilseeds & Nuts	16	Woodfuel ^{**}
Sugar Crops	2 817	Wood Pulp [*]
Tobacco	0	Wood-based Panels ^{**}
Fibre Crops	-	
Forestry⁰²		Fisheries^{02 *}
Indust.Roundwood ^{**}	346	Pelagic
Paper, Paperboard [*]	-	Freshwater
		Demersal
		Molluscs

Per Capita Agricultural Production Index



* 1000Tonnes ** 1000m³

Time reference=⁹⁹⁻⁰¹:1999-2001, ⁰⁰:2000, ⁰²:2002, ⁰⁰⁻⁰²:2000-2002, ⁰³:2003, ⁰⁴:2004, ^{ly}:Latest Available Year

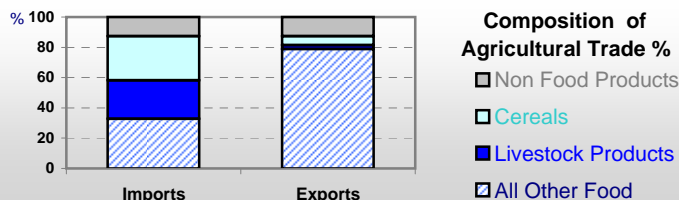


Country profiles

Fiji

Trade ⁰²

Agricultural Imports *	124
% 4 Major Imports in Agr.Imp	30
% Agr. Imports in Tot. Imports	14
Fishery Imports *	35
Forestry Imports *	17
Agricultural Exports *	168
% 4 Major Exports in Agr.Exp.	71
% Agr. Exports in Tot.Exports	31
Fishery Exports *	38
Forestry Exports *	18



Trade Partners & Products

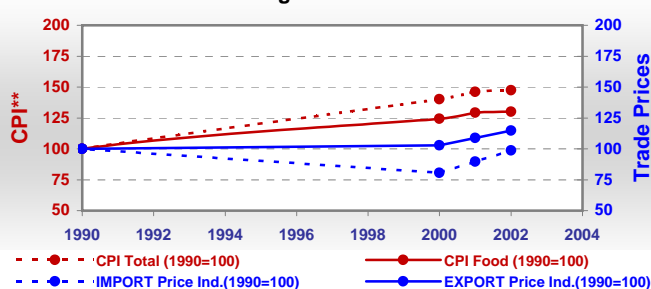
Major Import Partner	Australia	New Zealand	Thailand
Major Export Partner	UK	Japan	USA
Major Imports	Wheat	Mutton Lamb	Rice,Husked
Major Exports	Sugar,C. Raw	Waters,Ice E	Taro

* Million \$

Prices

Producer Prices ⁰⁰⁻⁰²	\$*	\$ Green *
Wheat	-	-
Rice	-	-
Maize	-	-
Soybean	-	-
Coffee	-	-
Tobacco	-	-
Cow Milk	-	-
Cattle (Live Weight)	-	-
Pig (Live Weight)	-	-
Chicken (Live Weight)	-	-

Consumer and Agricultural Trade Price Indices

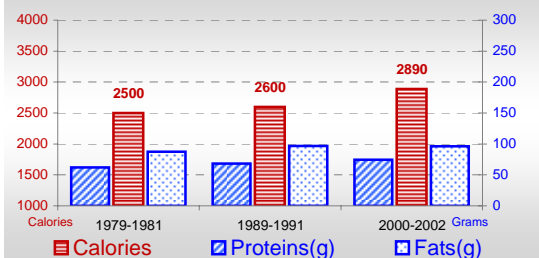


* per Tonne

** CPI : Consumer Price Index

Consumption

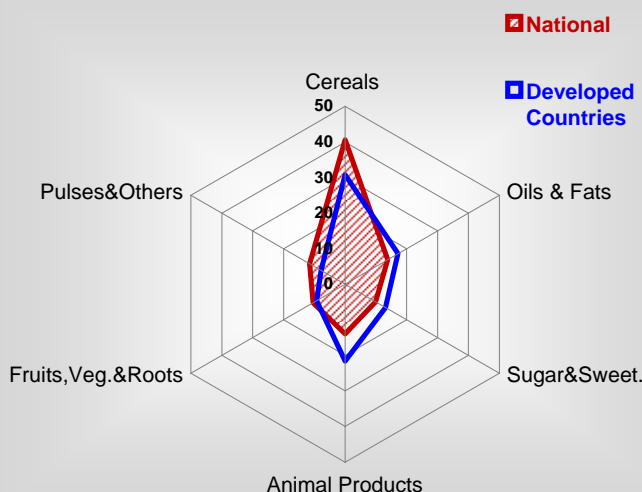
Per Capita Daily Consumption



Per Capita Daily Calorie Intake From Selected Food Items ⁰⁰⁻⁰²

Rice	419
Wheat	732
Maize	8
Sorghum	-
Potatoes	42
Cassava	75
Sugar	283
Soybean Oil	217
Palm Oil	-
Milk	57
Anim.Fats(Raw&Butter)	114
Eggs	22
Pig Meat	44
Poultry Meat	46
Bovine Meat	66
Sheep & Goats Meat	87

Source of Dietary Energy Consumption % ⁰⁰⁻⁰²



Food Balance ⁰⁰⁻⁰² (1000Tonnes)

Food Groups	Production (+)	Exports (-)	Imports (+)	Seed, Feed, Other Uses (-)	Consumption (=)
Cereals	10	18	179	53	118
Veg.oils	8	4	10	4	10
Sugar&Sw.	321	295	6	5	27
Roots&Tub.	83	16	19	4	80
Meat	22	1	14	1	34
Milk	57	1	19	47	28

Time reference= ⁹⁹⁻⁰¹:1999-2001, ⁰⁰:2000, ⁰²:2002, ⁰⁰⁻⁰²:2000-2002, ⁰³:2003, ⁰⁴:2004, ^{ly}:Latest Available Year