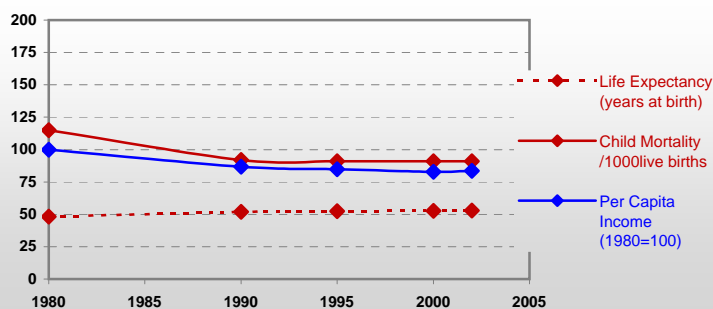


Gabon



General / Welfare

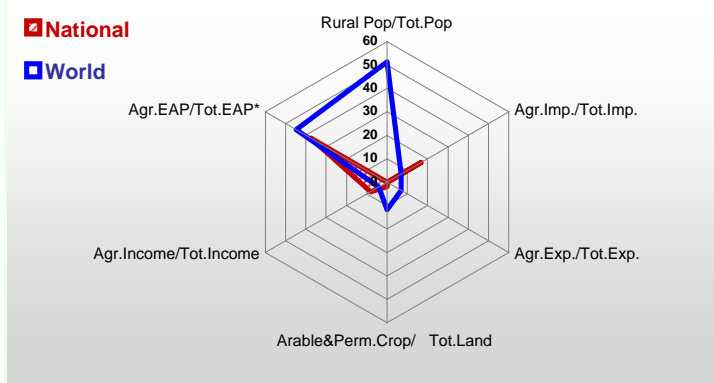
| | |
|---|--------|
| Population ^{04 *} | 1 351 |
| Per Capita Income ^{02 **} | 4 323 |
| Per Capita Agricultural Income ^{02**} | 1 015 |
| Total Exports ^{02 ****} | 2 105 |
| Total Imports ^{02 ****} | 950 |
| Agric. External Assistance ^{99-01 ***} | 11 546 |
| Food Consumption Inequality (G) ^{ly} | 0,12 |
| Income Inequality (G) ^{ly} | - |
| Land Inequality (G) ^{ly} | - |
| Undernourished Population % ⁰⁰⁻⁰² | 6 |



*1000 ** \$ **** Million \$ --- (G) : Gini Coefficient --- Income refers to GDP at 1995 Constant Prices

Agriculture In The Economy^{ly}

Resources

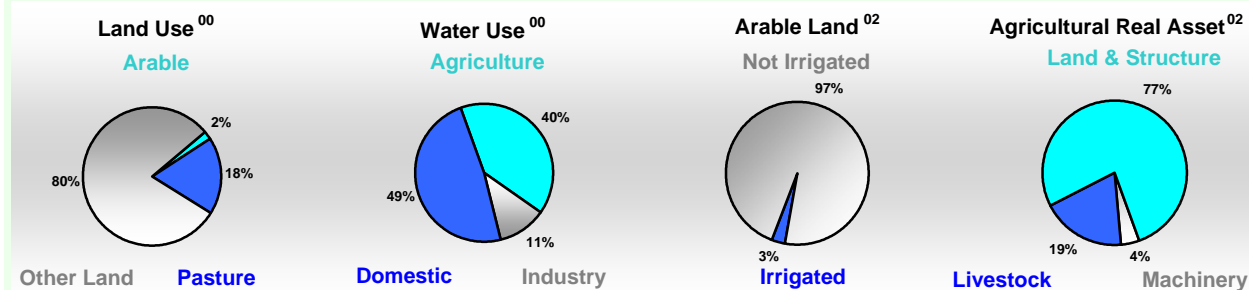


| | |
|---|-------|
| Arable Land ^{00 *} | 325 |
| Permanent Crops ^{00 *} | 170 |
| Pasture ^{00 *} | 4 665 |
| Cattle & Buffaloes ^{03 **} | 35 |
| Sheep & Goats ^{03 **} | 285 |
| Tractors ^{02 *} | 5 |
| Harvesters&Threshers ^{02 *} | - |
| Fertilizers Production ^{02 ***} | - |
| Fertilizers Consumption ^{02 ***} | 300 |
| Rainfall Index ^{02 (mm)} | 1 504 |

* EAP : Economically Active Population

* 1000ha ** 1000heads *** Tonnes N,P₂O₅,K₂O

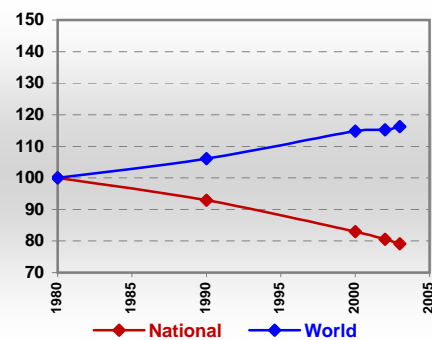
Resources Distribution



Production

| | | |
|-----------------------------------|-------|---------------------------------|
| Agriculture^{03 *} | | |
| Cereals | 32 | Pulpwd.,Rnd&Split ** |
| Meat | 32 | Roundwood ** |
| Fruits & Vegetables | 329 | Log:Saw&Veneer ** |
| Roots & Tubers | 447 | Sawnwood ** |
| Pulses | 0 | Wood Charcoal * |
| Oilseeds & Nuts | 13 | Woodfuel ** |
| Sugar Crops | 235 | Wood Pulp * |
| Tobacco | - | Wood-based Panels ** |
| Fibre Crops | - | |
| Forestry⁰² | | Fisheries^{02 *} |
| Indust.Roundwood ** | 2 584 | Pelagic |
| Paper, Paperboard * | - | Freshwater |
| | | Demersal |
| | | Molluscs |

Per Capita Agricultural Production Index



* 1000Tonnes ** 1000m³

Time reference= ⁹⁹⁻⁰¹:1999-2001, ⁰⁰:2000, ⁰²:2002, ⁰⁰⁻⁰²:2000-2002, ⁰³:2003, ⁰⁴:2004, ^{ly}:Latest Available Year



Country profiles

Gabon

Trade ⁰²

| | |
|--------------------------------|-----|
| Agricultural Imports * | 158 |
| % 4 Major Imports in Agr.Imp | 22 |
| % Agr. Imports in Tot. Imports | 17 |
| Fishery Imports * | 2 |
| Forestry Imports * | 4 |
| Agricultural Exports * | 2 |
| % 4 Major Exports in Agr.Exp. | 32 |
| % Agr. Exports in Tot.Exports | 0 |
| Fishery Exports * | 11 |
| Forestry Exports * | 312 |



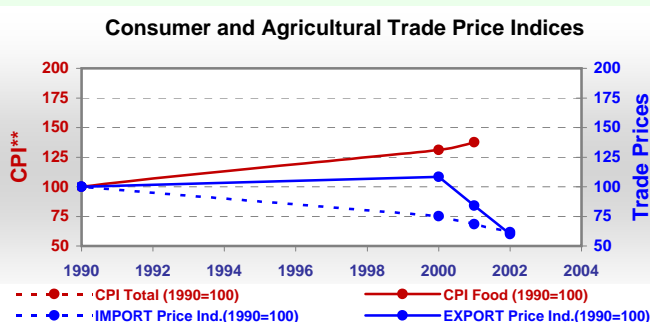
Trade Partners & Products

| | | | |
|-----------------------------|------------|-------------|------------|
| Major Import Partner | | | |
| Major Export Partner | | | |
| Major Imports | Mil Rice | Food Prep | Wheat |
| Major Exports | Rubber Dry | Oil of Palm | Bran Wheat |

* Million \$

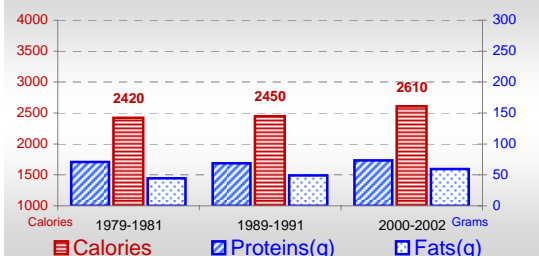
Prices

| Producer Prices ⁰⁰⁻⁰² | \$* | \$ Green * |
|----------------------------------|-----|------------|
| Wheat | - | - |
| Rice | - | - |
| Maize | - | - |
| Soybean | - | - |
| Coffee | - | - |
| Tobacco | - | - |
| Cow Milk | - | - |
| Cattle (Live Weight) | - | - |
| Pig (Live Weight) | - | - |
| Chicken (Live Weight) | - | - |

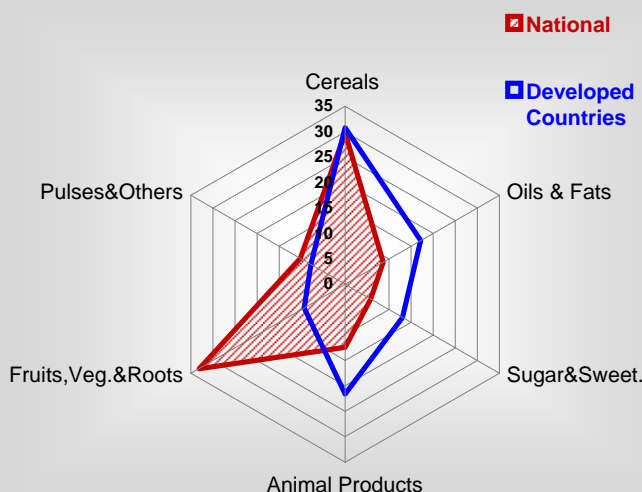


Consumption

Per Capita Daily Consumption



Source of Dietary Energy Consumption % ⁰⁰⁻⁰²



Per Capita Daily Calorie Intake From Selected Food Items ⁰⁰⁻⁰²

| | |
|-----------------------|-----|
| Rice | 257 |
| Wheat | 401 |
| Maize | 101 |
| Sorghum | - |
| Potatoes | 2 |
| Cassava | 241 |
| Sugar | 149 |
| Soybean Oil | 49 |
| Palm Oil | 85 |
| Milk | 60 |
| Anim.Fats(Raw&Butter) | 16 |
| Eggs | 4 |
| Pig Meat | 47 |
| Poultry Meat | 53 |
| Bovine Meat | 13 |
| Sheep & Goats Meat | 4 |

Food Balance ⁰⁰⁻⁰² (1000Tonnes)

| Food Groups | Production (+) | Exports (-) | Imports (+) | Seed, Feed, Other Uses (-) | Consumption (=) |
|-------------|----------------|-------------|-------------|----------------------------|-----------------|
| Cereals | 30 | - | 160 | 65 | 125 |
| Veg.oils | 7 | 5 | 8 | -1 | 11 |
| Sugar&Sw. | 19 | - | 1 | 0 | 20 |
| Roots&Tub. | 446 | 0 | 4 | 216 | 235 |
| Meat | 32 | - | 27 | 1 | 58 |
| Milk | 2 | - | 36 | 1 | 37 |

Time reference= ⁹⁹⁻⁰¹:1999-2001, ⁰⁰:2000, ⁰²:2002, ⁰⁰⁻⁰²:2000-2002, ⁰³:2003, ⁰⁴:2004, ^{ly}:Latest Available Year