



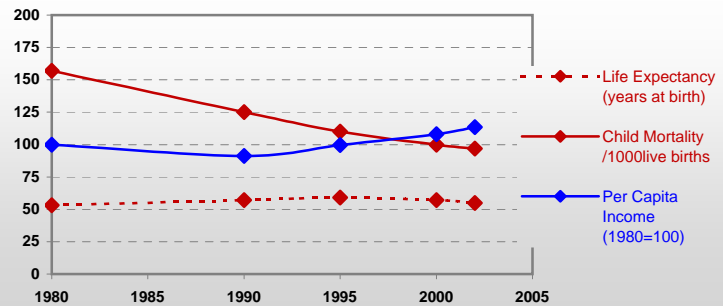
Country profiles

Ghana



General / Welfare

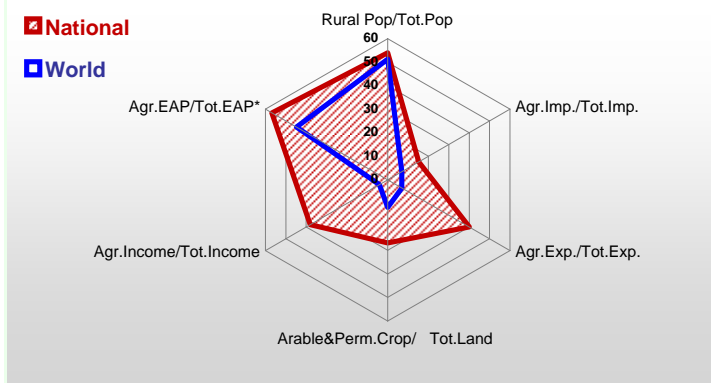
Population ^{04 *}	21 377
Per Capita Income ^{02 **}	429
Per Capita Agricultural Income ^{02**}	291
Total Exports ^{02 ****}	1 650
Total Imports ^{02 ****}	3 254
Agric. External Assistance ^{99-01 ***}	390 687
Food Consumption Inequality (G) ^{ly}	0,15
Income Inequality (G) ^{ly}	0,30
Land Inequality (G) ^{ly}	-
Undernourished Population % ⁰⁰⁻⁰²	13



*1000 ** \$ *** 1000 \$ **** Million \$ --- (G) : Gini Coefficient --- Income refers to GDP at 1995 Constant Prices

Agriculture In The Economy^{ly}

Resources

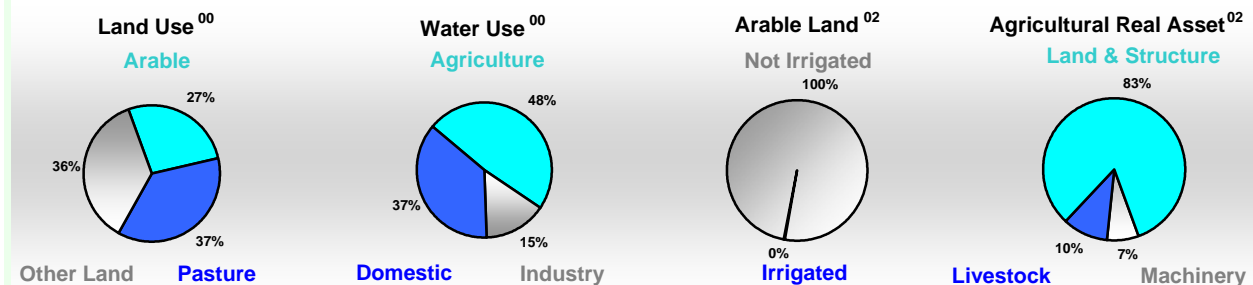


Arable Land ^{00 *}	3 950
Permanent Crops ^{00 *}	2 150
Pasture ^{00 *}	8 350
Cattle & Buffaloes ^{03 **}	1 350
Sheep & Goats ^{03 **}	6 360
Tractors ^{02 *}	1
Harvesters&Threshers ^{02 *}	0
Fertilizers Production ^{02 ***}	-
Fertilizers Consumption ^{02 ***}	31 030
Rainfall Index ^{02 (mm)}	1 112

* EAP : Economically Active Population

* 1000ha ** 1000heads *** Tonnes N,P₂O₅,K₂O

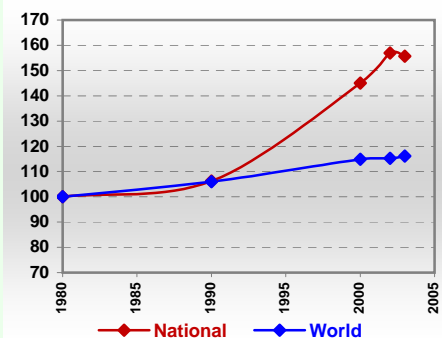
Resources Distribution



Production

Agriculture^{03 *}		Pulpwd.,Rnd&Split^{**}	-
Cereals	2 041	Roundwood ^{**}	21 782
Meat	172	Log:Saw&Veneer ^{**}	1 104
Fruits & Vegetables	3 416	Sawnwood ^{**}	461
Roots & Tubers	15 947	Wood Charcoal [*]	752
Pulses	15	Woodfuel ^{**}	20 678
Oilseeds & Nuts	324	Wood Pulp [*]	-
Sugar Crops	140	Wood-based Panels ^{**}	391
Tobacco	1	Fisheries^{02 *}	
Fibre Crops	7	Pelagic	230
Forestry⁰²		Freshwater	86
Indust.Roundwood ^{**}	1 104	Demersal	30
Paper, Paperboard [*]	-	Molluscs	-

Per Capita Agricultural Production Index



* 1000Tonnes ** 1000m³

Time reference= ⁹⁹⁻⁰¹:1999-2001, ⁰⁰:2000, ⁰²:2002, ⁰⁰⁻⁰²:2000-2002, ⁰³:2003, ⁰⁴:2004, ^{ly}:Latest Available Year



Country profiles

Ghana

Trade ⁰²

Agricultural Imports *	497
% 4 Major Imports in Agr.Imp	18
% Agr. Imports in Tot. Imports	15
Fishery Imports *	125
Forestry Imports *	20
Agricultural Exports *	659
% 4 Major Exports in Agr.Exp.	84
% Agr. Exports in Tot.Exports	40
Fishery Exports *	92
Forestry Exports *	148



Trade Partners & Products

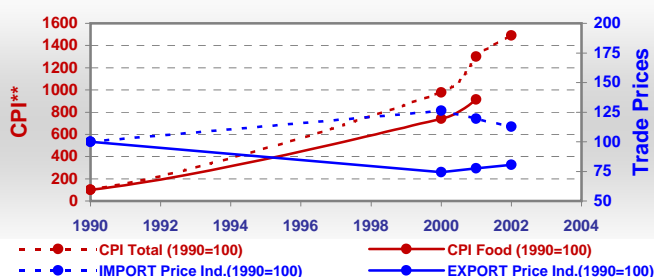
Major Import Partner	USA	Brazil	Canada
Major Export Partner			
Major Imports	Sugar Refind	Wheat	Cattle
Major Exports	Cocoa Beans	Cocoa Butter	Cocoa Paste

* Million \$

Prices

Producer Prices ⁰⁰⁻⁰²	\$*	\$ Green *
Wheat	-	-
Rice	303	381
Maize	147	183
Soybean	-	-
Coffee	767	989
Tobacco	806	1 040
Cow Milk	95	121
Cattle (Live Weight)	374	456
Pig (Live Weight)	897	1 126
Chicken (Live Weight)	1 874	2 384

Consumer and Agricultural Trade Price Indices

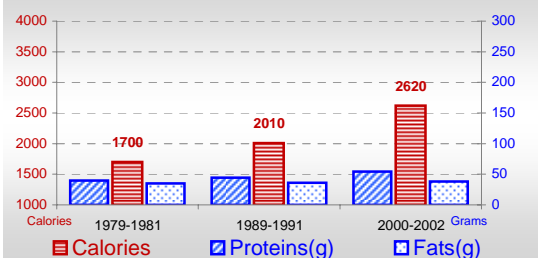


* per Tonne

** CPI : Consumer Price Index

Consumption

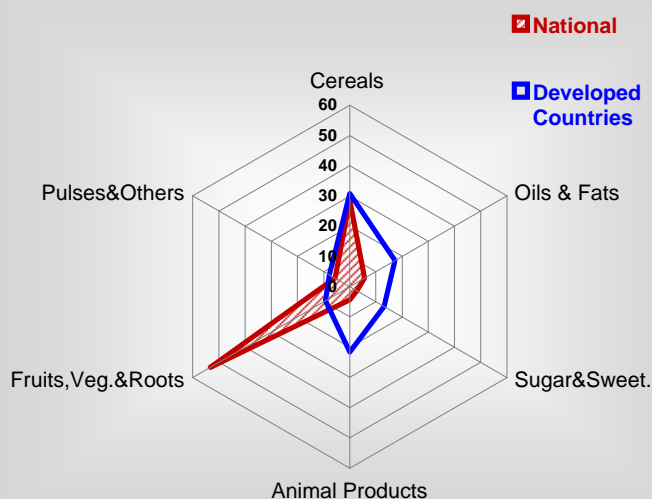
Per Capita Daily Consumption



Per Capita Daily Calorie Intake From Selected Food Items ⁰⁰⁻⁰²

Rice	200
Wheat	86
Maize	337
Sorghum	74
Potatoes	1
Cassava	637
Sugar	68
Soybean Oil	6
Palm Oil	74
Milk	11
Anim.Fats(Raw&Butter)	5
Eggs	3
Pig Meat	6
Poultry Meat	5
Bovine Meat	7
Sheep & Goats Meat	4

Source of Dietary Energy Consumption % ⁰⁰⁻⁰²



Food Balance ⁰⁰⁻⁰² (1000Tonnes)

Food Groups	Production (+)	Exports (-)	Imports (+)	Seed, Feed, Other Uses (-)	Consumption (=)
Cereals	1 742	3	596	569	1 766
Veg.oils	212	44	46	94	120
Sugar&Sw.	-	12	212	59	141
Roots&Tub.	14 352	17	13	6 270	8 078
Meat	166	-	25	1	190
Milk	34	3	117	1	147

Time reference= ⁹⁹⁻⁰¹:1999-2001, ⁰⁰:2000, ⁰²:2002, ⁰⁰⁻⁰²:2000-2002, ⁰³:2003, ⁰⁴:2004, ^{ly}:Latest Available Year