



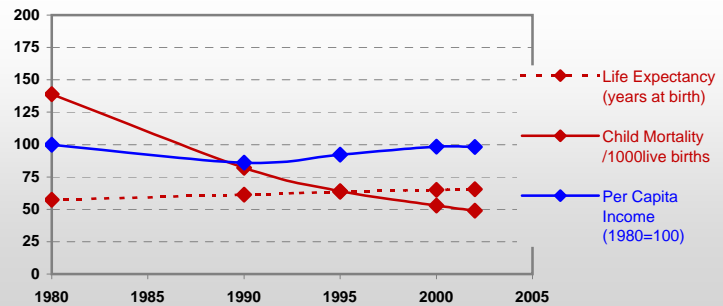
# Country profiles

## Guatemala



### General / Welfare

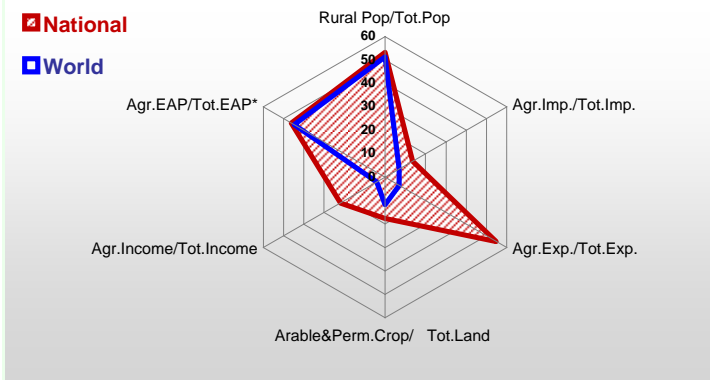
Population <sup>04 *</sup>	12 661
Per Capita Income <sup>02 **</sup>	1 552
Per Capita Agricultural Income <sup>02**</sup>	713
Total Exports <sup>02 ****</sup>	2 232
Total Imports <sup>02 ****</sup>	6 078
Agric. External Assistance <sup>99-01 ***</sup>	251 258
Food Consumption Inequality (G) <sup>ly</sup>	0,15
Income Inequality (G) <sup>ly</sup>	0,48
Land Inequality (G) <sup>ly</sup>	-
Undernourished Population % <sup>00-02</sup>	24



\* 1000 \*\* \$ \*\*\* 1000 \$ \*\*\*\* Million \$ --- (G) : Gini Coefficient --- Income refers to GDP at 1995 Constant Prices

### Agriculture In The Economy <sup>ly</sup>

### Resources

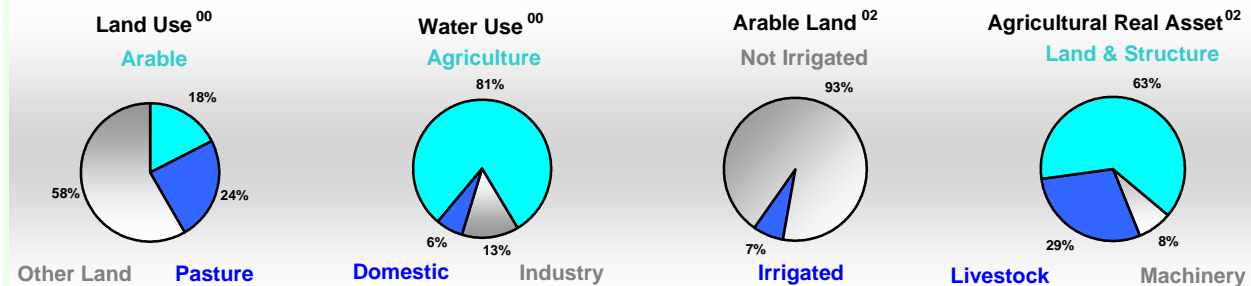


Arable Land <sup>00 *</sup>	1 360
Permanent Crops <sup>00 *</sup>	545
Pasture <sup>00 *</sup>	2 602
Cattle & Buffaloes <sup>03 **</sup>	2 540
Sheep & Goats <sup>03 **</sup>	372
Tractors <sup>02 *</sup>	3
Harvesters&Threshers <sup>02 *</sup>	2
Fertilizers Production <sup>02 ***</sup>	-
Fertilizers Consumption <sup>02 ***</sup>	186 200
Rainfall Index <sup>02 (mm)</sup>	2 104

\* EAP : Economically Active Population

\* 1000ha \*\* 1000heads \*\*\* Tonnes N,P<sub>2</sub>O<sub>5</sub>,K<sub>2</sub>O

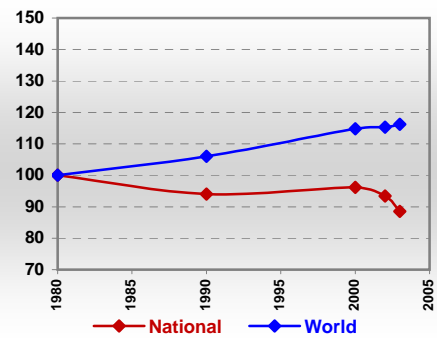
### Resources Distribution



### Production

<b>Agriculture <sup>03 *</sup></b>		<b>Pulpwd.,Rnd&amp;Split <sup>**</sup></b>	-
Cereals	1 147	Roundwood <sup>**</sup>	15 725
Meat	248	Log:Saw&Veneer <sup>**</sup>	492
Fruits & Vegetables	2 972	Sawnwood <sup>**</sup>	340
Roots & Tubers	264	Wood Charcoal <sup>*</sup>	18
Pulses	130	Woodfuel <sup>**</sup>	15 207
Oilseeds & Nuts	156	Wood Pulp <sup>*</sup>	-
Sugar Crops	17 500	Wood-based Panels <sup>**</sup>	43
Tobacco	21		
Fibre Crops	2	<b>Fisheries <sup>02 *</sup></b>	
		Pelagic	15
<b>Forestry <sup>02</sup></b>		Freshwater	10
Indust.Roundwood <sup>**</sup>	518	Demersal	0
Paper, Paperboard <sup>*</sup>	31	Molluscs	0

### Per Capita Agricultural Production Index



\* 1000Tonnes \*\* 1000m<sup>3</sup>

Time reference= <sup>99-01</sup>:1999-2001, <sup>00</sup>:2000, <sup>02</sup>:2002, <sup>00-02</sup>:2000-2002, <sup>03</sup>:2003, <sup>04</sup>:2004, <sup>ly</sup>:Latest Available Year

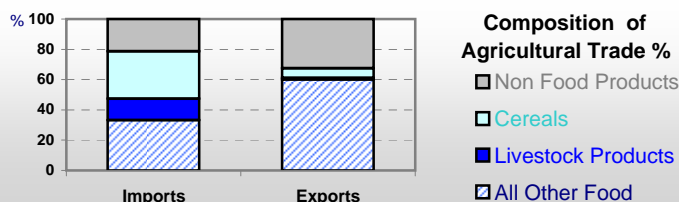


# Country profiles

## Guatemala

### Trade <sup>02</sup>

Agricultural Imports *	821
% 4 Major Imports in Agr.Imp	21
% Agr. Imports in Tot. Imports	14
Fishery Imports *	12
Forestry Imports *	190
Agricultural Exports *	1 220
% 4 Major Exports in Agr.Exp.	41
% Agr. Exports in Tot.Exports	55
Fishery Exports *	8
Forestry Exports *	26



### Trade Partners & Products

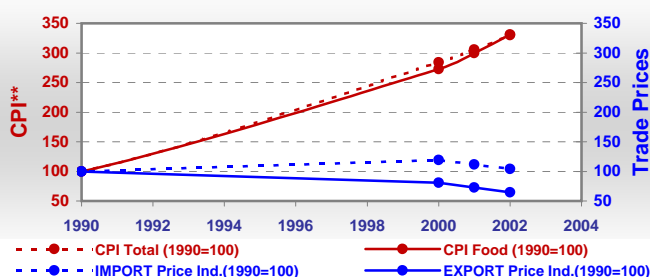
<b>Major Import Partner</b>	USA	El Salvador	Mexico
<b>Major Export Partner</b>	USA	El Salvador	Korea Rep
<b>Major Imports</b>	Food Prep	Wheat	Maize
<b>Major Exports</b>	Coffee,Green	Sugar,C. Raw	Bananas

\* Million \$

### Prices

Producer Prices <sup>00-02</sup>	\$*	\$ Green *
Wheat	-	-
Rice	-	-
Maize	-	-
Soybean	-	-
Coffee	-	-
Tobacco	-	-
Cow Milk	-	-
Cattle (Live Weight)	-	-
Pig (Live Weight)	-	-
Chicken (Live Weight)	-	-

### Consumer and Agricultural Trade Price Indices

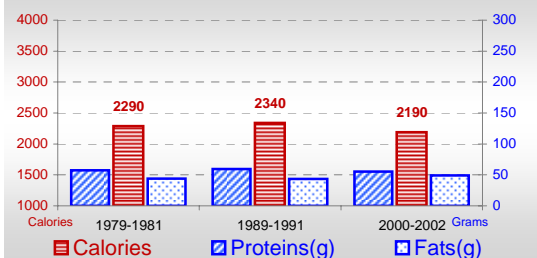


\* per Tonne

\*\* CPI : Consumer Price Index

### Consumption

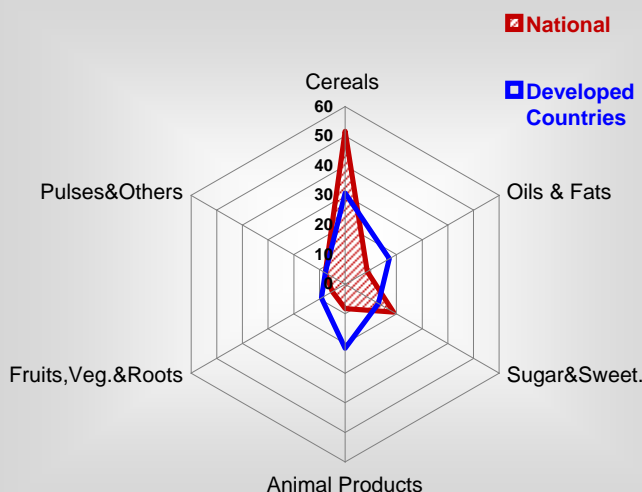
#### Per Capita Daily Consumption



#### Per Capita Daily Calorie Intake From Selected Food Items <sup>00-02</sup>

Rice	45
Wheat	230
Maize	842
Sorghum	4
Potatoes	8
Cassava	3
Sugar	389
Soybean Oil	75
Palm Oil	33
Milk	68
Anim.Fats(Raw&Butter)	21
Eggs	23
Pig Meat	11
Poultry Meat	48
Bovine Meat	23
Sheep & Goats Meat	1

#### Source of Dietary Energy Consumption % <sup>00-02</sup>



### Food Balance <sup>00-02</sup> (1000Tonnes)

Food Groups	Production (+)	Exports (-)	Imports (+)	Seed, Feed, Other Uses (-)	Consumption (=)
Cereals	1 157	98	1 028	585	1 502
Veg.oils	100	68	97	47	82
Sugar&Sw.	1 785	1 266	25	49	495
Roots&Tub.	248	66	17	131	67
Meat	238	5	39	1	271
Milk	267	3	219	0	483

Time reference= <sup>99-01</sup>:1999-2001, <sup>00</sup>:2000, <sup>02</sup>:2002, <sup>00-02</sup>:2000-2002, <sup>03</sup>:2003, <sup>04</sup>:2004, <sup>ly</sup>:Latest Available Year