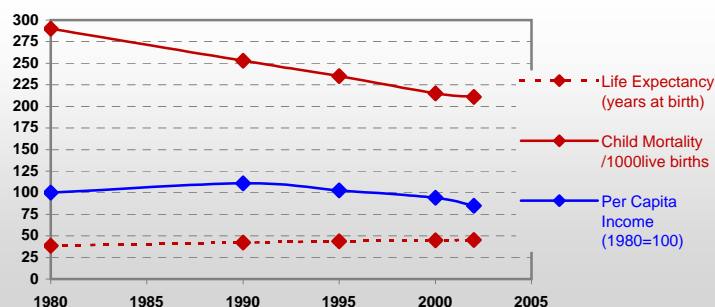


## Guinea Bissau



### General / Welfare

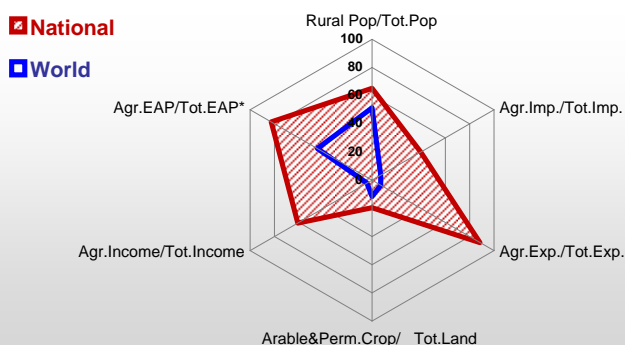
Population <sup>04 *</sup>	1 538
Per Capita Income <sup>02 **</sup>	162
Per Capita Agricultural Income <sup>02**</sup>	120
Total Exports <sup>02 ****</sup>	54
Total Imports <sup>02 ****</sup>	58
Agric. External Assistance <sup>99-01 ***</sup>	10 818
Food Consumption Inequality (G) <sup>ly</sup>	0,16
Income Inequality (G) <sup>ly</sup>	0,47
Land Inequality (G) <sup>ly</sup>	0,62
Undernourished Population % <sup>00-02</sup>	-



\* 1000 \*\* \$ \*\*\*\* 1000 \$ \*\*\*\*\* Million \$ --- (G) : Gini Coefficient --- Income refers to GDP at 1995 Constant Prices

### Agriculture In The Economy<sup>ly</sup>

### Resources

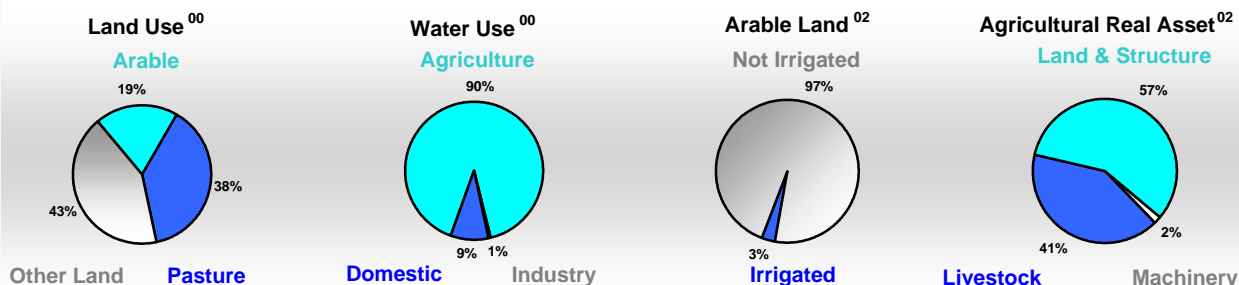


Arable Land <sup>00 *</sup>	300
Permanent Crops <sup>00 *</sup>	248
Pasture <sup>00 *</sup>	1 080
Cattle & Buffaloes <sup>03 **</sup>	520
Sheep & Goats <sup>03 **</sup>	620
Tractors <sup>02 *</sup>	0
Harvesters&Threshers <sup>02 *</sup>	-
Fertilizers Production <sup>02 ***</sup>	-
Fertilizers Consumption <sup>02 ***</sup>	2 400
Rainfall Index <sup>02 (mm)</sup>	1 223

\* EAP : Economically Active Population

\* 1000ha \*\* 1000heads \*\*\* Tonnes N,P<sub>2</sub>O<sub>5</sub>,K<sub>2</sub>O

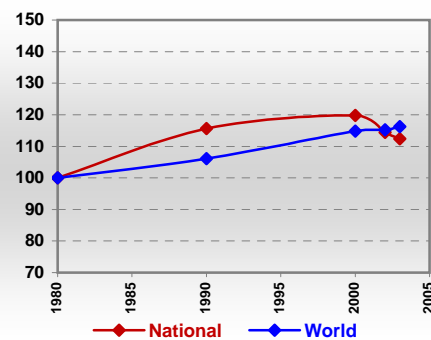
### Resources Distribution



### Production

Agriculture <sup>03 *</sup>		Forestry <sup>02</sup>		Fisheries <sup>02 *</sup>	
Cereals	156	Indust.Roundwood **	170	Pulpwd.,Rnd&Split **	-
Meat	19	Paper, Paperboard *	-	Roundwood **	592
Fruits & Vegetables	99			Log:Saw&Veneer **	40
Roots & Tubers	99			Sawnwood **	16
Pulses	2			Wood Charcoal *	-
Oilseeds & Nuts	100			Woodfuel **	422
Sugar Crops	6			Wood Pulp *	-
Tobacco	-			Wood-based Panels **	-
Fibre Crops	2				
				Pelagic	0
				Freshwater	0
				Demersal	4
				Molluscs	0

### Per Capita Agricultural Production Index



\* 1000Tonnes \*\* 1000m<sup>3</sup>

Time reference= <sup>99-01</sup>:1999-2001, <sup>00</sup>:2000, <sup>02</sup>:2002, <sup>00-02</sup>:2000-2002, <sup>03</sup>:2003, <sup>04</sup>:2004, <sup>ly</sup>:Latest Available Year

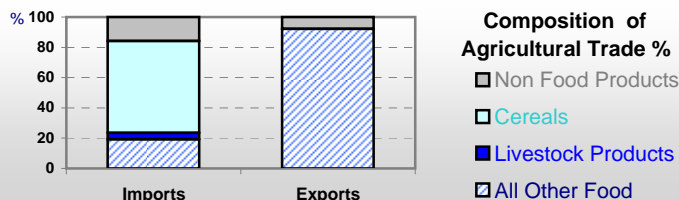


# Country profiles

## Guinea Bissau

### Trade <sup>02</sup>

Agricultural Imports *	41
% 4 Major Imports in Agr.Imp	58
% Agr. Imports in Tot. Imports	40
Fishery Imports *	0
Forestry Imports *	0
Agricultural Exports *	47
% 4 Major Exports in Agr.Exp.	95
% Agr. Exports in Tot.Exports	88
Fishery Exports *	5
Forestry Exports *	1



### Trade Partners & Products

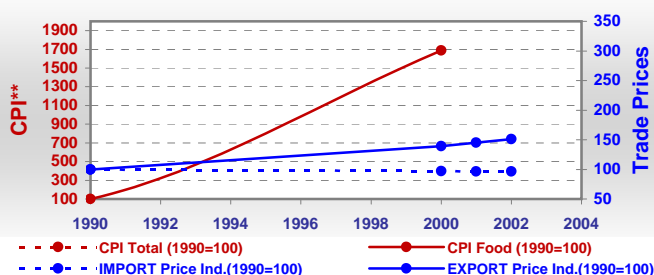
Major Import Partner			
Major Export Partner			
Major Imports	Mil Rice	Flour Wheat	Oil Soyabean
Major Exports	Cashew Nuts	Cotton Lint	Cottonseed

\* Million \$

### Prices

Producer Prices <sup>00-02</sup>	\$*	\$ Green *
Wheat	-	-
Rice	-	-
Maize	-	-
Soybean	-	-
Coffee	-	-
Tobacco	-	-
Cow Milk	-	-
Cattle (Live Weight)	-	-
Pig (Live Weight)	-	-
Chicken (Live Weight)	-	-

### Consumer and Agricultural Trade Price Indices

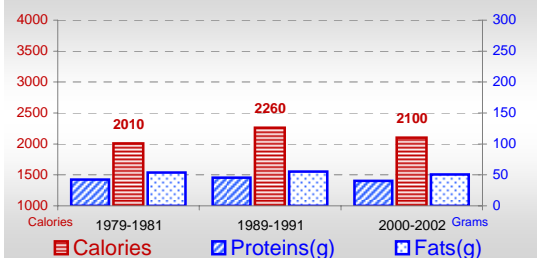


\* per Tonne

\*\* CPI : Consumer Price Index

### Consumption

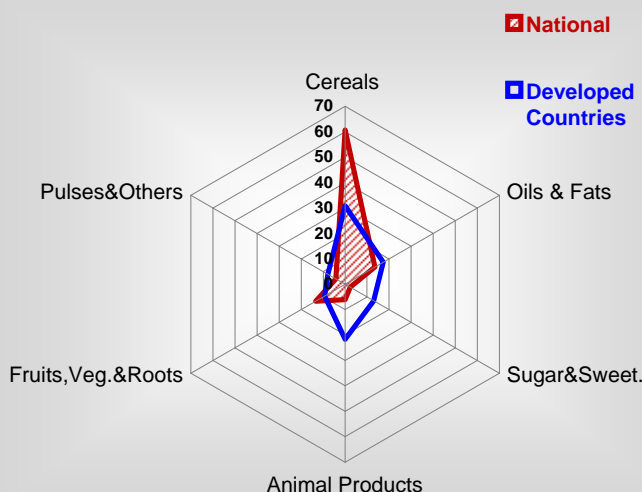
#### Per Capita Daily Consumption



#### Per Capita Daily Calorie Intake From Selected Food Items <sup>00-02</sup>

Rice	874
Wheat	82
Maize	138
Sorghum	75
Potatoes	-
Cassava	71
Sugar	45
Soybean Oil	61
Palm Oil	57
Milk	26
Anim.Fats(Raw&Butter)	10
Eggs	2
Pig Meat	65
Poultry Meat	4
Bovine Meat	18
Sheep & Goats Meat	4

#### Source of Dietary Energy Consumption % <sup>00-02</sup>



### Food Balance <sup>00-02</sup> (1000Tonnes)

Food Groups	Production (+)	Exports (-)	Imports (+)	Seed, Feed, Other Uses (-)	Consumption (=)
Cereals	132	-	88	28	192
Veg.oils	18	-	5	7	16
Sugar&Sw.	-	-	7	-1	8
Roots&Tub.	98	-	0	7	92
Meat	18	-	1	0	19
Milk	18	-	3	1	20

Time reference= <sup>99-01</sup>:1999-2001, <sup>00</sup>:2000, <sup>02</sup>:2002, <sup>00-02</sup>:2000-2002, <sup>03</sup>:2003, <sup>04</sup>:2004, <sup>ly</sup>:Latest Available Year