



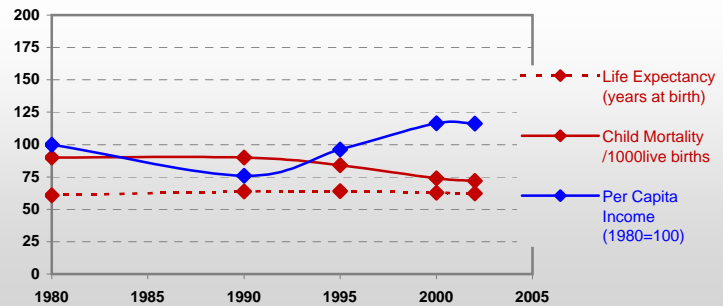
Country profiles

Guyana



General / Welfare

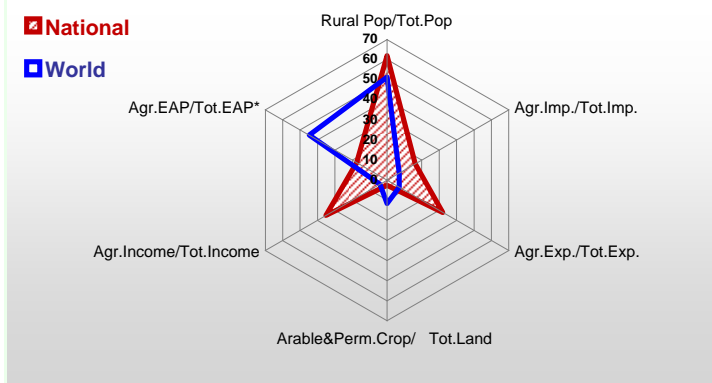
Population ^{04 *}	767
Per Capita Income ^{02 **}	950
Per Capita Agricultural Income ^{02**}	1 938
Total Exports ^{02 ****}	496
Total Imports ^{02 ****}	563
Agric. External Assistance ^{99-01 ***}	6 867
Food Consumption Inequality (G) ^{ly}	0,14
Income Inequality (G) ^{ly}	0,43
Land Inequality (G) ^{ly}	-
Undernourished Population % ⁰⁰⁻⁰²	9



*1000 ** \$ **** Million \$ --- (G) : Gini Coefficient --- Income refers to GDP at 1995 Constant Prices

Agriculture In The Economy^{ly}

Resources

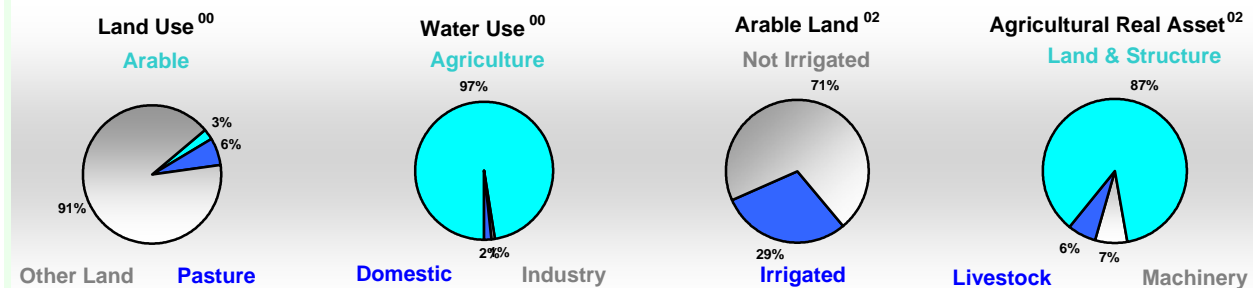


Arable Land ^{00 *}	480
Permanent Crops ^{00 *}	30
Pasture ^{00 *}	1 230
Cattle & Buffaloes ^{03 **}	110
Sheep & Goats ^{03 **}	209
Tractors ^{02 *}	8
Harvesters&Threshers ^{02 *}	1
Fertilizers Production ^{02 ***}	-
Fertilizers Consumption ^{02 ***}	17 879
Rainfall Index ^{02 (mm)}	2 171

* EAP : Economically Active Population

* 1000ha ** 1000heads *** Tonnes N,P₂O₅,K₂O

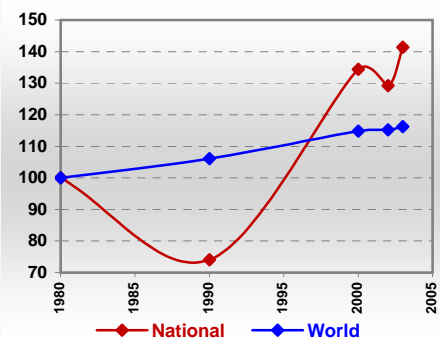
Resources Distribution



Production

Agriculture^{03 *}		
Cereals	506	Pulpwd.,Rnd&Split ^{**}
Meat	27	Roundwood ^{**}
Fruits & Vegetables	110	Log:Saw&Veneer ^{**}
Roots & Tubers	40	Sawnwood ^{**}
Pulses	1	Wood Charcoal [*]
Oilseeds & Nuts	6	Woodfuel ^{**}
Sugar Crops	3 000	Wood Pulp [*]
Tobacco	0	Wood-based Panels ^{**}
Fibre Crops	-	Fisheries^{02 *}
		Pelagic
		Freshwater
Forestry⁰²		Demersal
Indust.Roundwood ^{**}	269	Molluscs
Paper, Paperboard [*]	-	

Per Capita Agricultural Production Index



* 1000Tonnes ** 1000m³

Time reference= ⁹⁹⁻⁰¹ :1999-2001, ⁰⁰ :2000, ⁰² :2002, ⁰⁰⁻⁰² :2000-2002, ⁰³ :2003, ⁰⁴ :2004, ^{ly} :Latest Available Year



Country profiles

Guyana

Trade ⁰²

Agricultural Imports *	91
% 4 Major Imports in Agr.Imp	21
% Agr. Imports in Tot. Imports	16
Fishery Imports *	3
Forestry Imports *	2
Agricultural Exports *	158
% 4 Major Exports in Agr.Exp.	67
% Agr. Exports in Tot.Exports	32
Fishery Exports *	54
Forestry Exports *	28



Trade Partners & Products

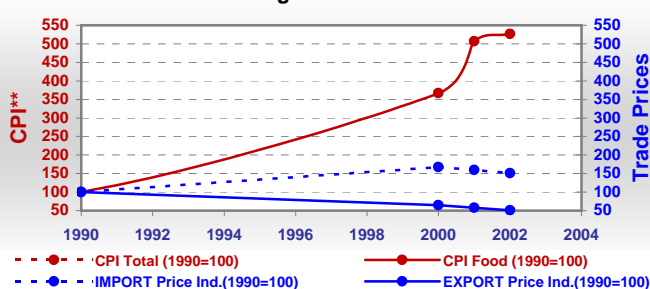
Major Import Partner	USA	Trinidad Tbg	Netherlands
Major Export Partner	UK	Portugal	Jamaica
Major Imports	Cowmilk Dry	Wheat	Food Prep
Major Exports	Sugar,C. Raw	Rice,Husked	Bev Dis Alc

* Million \$

Prices

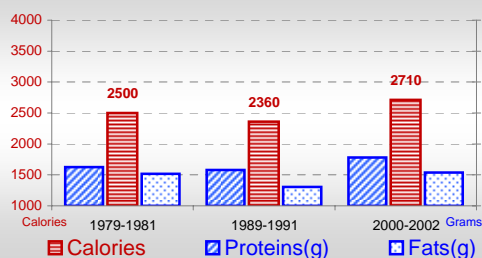
Producer Prices ⁰⁰⁻⁰²	\$*	\$ Green *
Wheat	-	-
Rice	-	-
Maize	-	-
Soybean	-	-
Coffee	-	-
Tobacco	-	-
Cow Milk	-	-
Cattle (Live Weight)	-	-
Pig (Live Weight)	-	-
Chicken (Live Weight)	-	-

Consumer and Agricultural Trade Price Indices

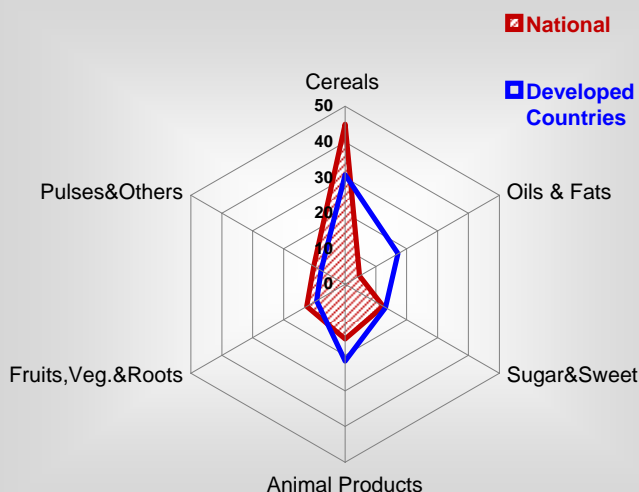


Consumption

Per Capita Daily Consumption



Source of Dietary Energy Consumption % ⁰⁰⁻⁰²



Per Capita Daily Calorie Intake From Selected Food Items ⁰⁰⁻⁰²

Rice	786
Wheat	417
Maize	13
Sorghum	-
Potatoes	22
Cassava	79
Sugar	316
Soybean Oil	17
Palm Oil	4
Milk	178
Anim.Fats(Raw&Butter)	16
Eggs	7
Pig Meat	14
Poultry Meat	112
Bovine Meat	15
Sheep & Goats Meat	4

Food Balance ⁰⁰⁻⁰² (1000Tonnes)

Food Groups	Production (+)	Exports (-)	Imports (+)	Seed, Feed, Other Uses (-)	Consumption (=)
Cereals	311	216	67	60	102
Veg.oils	2	-	3	2	3
Sugar&Sw.	296	278	13	3	28
Roots&Tub.	47	0	10	17	39
Meat	16	-	9	1	24
Milk	30	-	56	-1	87

Time reference= ⁹⁹⁻⁰¹:1999-2001, ⁰⁰:2000, ⁰²:2002, ⁰⁰⁻⁰²:2000-2002, ⁰³:2003, ⁰⁴:2004, ^{ly}:Latest Available Year