

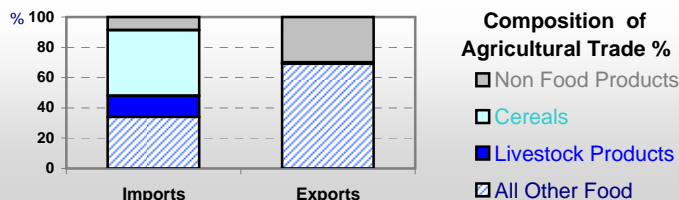


Country profiles

Haiti

Trade ⁰²

Agricultural Imports *	364
% 4 Major Imports in Agr.Imp	39
% Agr. Imports in Tot. Imports	32
Fishery Imports *	5
Forestry Imports *	16
Agricultural Exports *	17
% 4 Major Exports in Agr.Exp.	57
% Agr. Exports in Tot.Exports	6
Fishery Exports *	4
Forestry Exports *	-



Trade Partners & Products

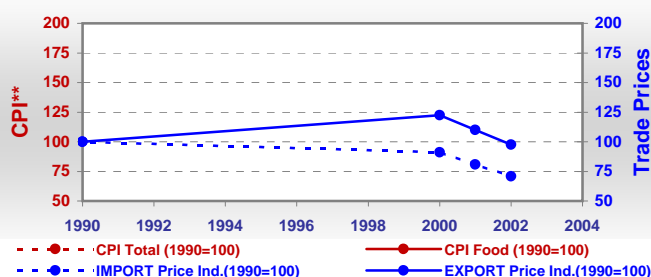
Major Import Partner			
Major Export Partner			
Major Imports	Mil Rice	Wheat	Sugar,C. Raw
Major Exports	Cocoa Beans	Ess Oils nes	Mangoes

* Million \$

Prices

Producer Prices ⁰⁰⁻⁰²	\$*	\$ Green *
Wheat	-	-
Rice	-	-
Maize	-	-
Soybean	-	-
Coffee	-	-
Tobacco	-	-
Cow Milk	-	-
Cattle (Live Weight)	-	-
Pig (Live Weight)	-	-
Chicken (Live Weight)	-	-

Consumer and Agricultural Trade Price Indices

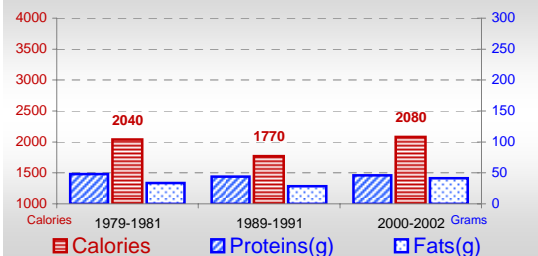


* per Tonne

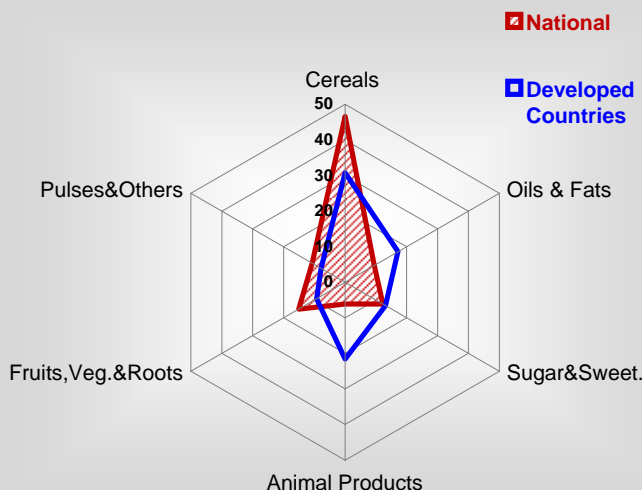
** CPI : Consumer Price Index

Consumption

Per Capita Daily Consumption



Source of Dietary Energy Consumption % ⁰⁰⁻⁰²



Per Capita Daily Calorie Intake From Selected Food Items ⁰⁰⁻⁰²

Rice	411
Wheat	287
Maize	238
Sorghum	33
Potatoes	2
Cassava	64
Sugar	231
Soybean Oil	141
Palm Oil	9
Milk	38
Anim.Fats(Raw&Butter)	14
Eggs	2
Pig Meat	29
Poultry Meat	12
Bovine Meat	30
Sheep & Goats Meat	4

Food Balance ⁰⁰⁻⁰² (1000Tonnes)

Food Groups	Production (+)	Exports (-)	Imports (+)	Seed, Feed, Other Uses (-)	Consumption (=)
Cereals	352	-	605	84	873
Veg.oils	1	-	83	23	61
Sugar&Sw.	27	-	161	-18	206
Roots&Tub.	761	0	0	184	577
Meat	95	-	26	1	120
Milk	66	-	65	3	128

Time reference= ⁹⁹⁻⁰¹:1999-2001, ⁰⁰:2000, ⁰²:2002, ⁰⁰⁻⁰²:2000-2002, ⁰³:2003, ⁰⁴:2004, ^{ly}:Latest Available Year