



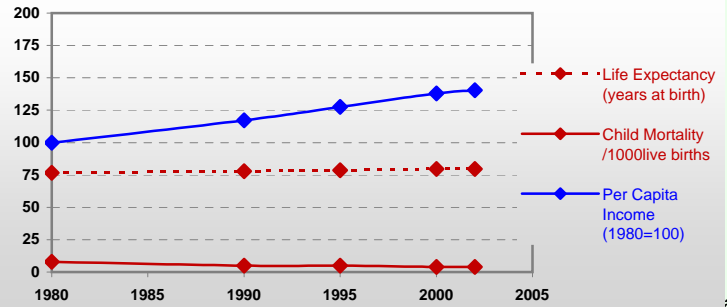
Country profiles

Iceland



General / Welfare

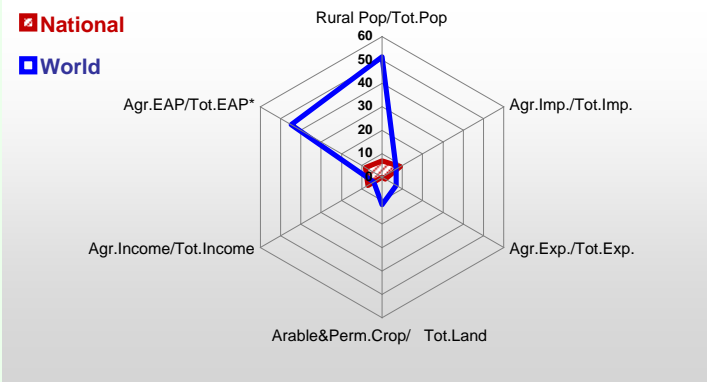
Population ^{04 *}	292
Per Capita Income ^{02 **}	31 385
Per Capita Agricultural Income ^{02**}	29 727
Total Exports ^{02 ****}	2 240
Total Imports ^{02 ****}	2 277
Agric. External Assistance ^{99-01 ***}	-
Food Consumption Inequality (G) ^{ly}	0,11
Income Inequality (G) ^{ly}	-
Land Inequality (G) ^{ly}	-
Undernourished Population % ⁰⁰⁻⁰²	< 2.5



* 1000 ** \$ *** 1000 \$ **** Million \$ --- (G) : Gini Coefficient --- Income refers to GDP at 1995 Constant Prices

Agriculture In The Economy^{ly}

Resources

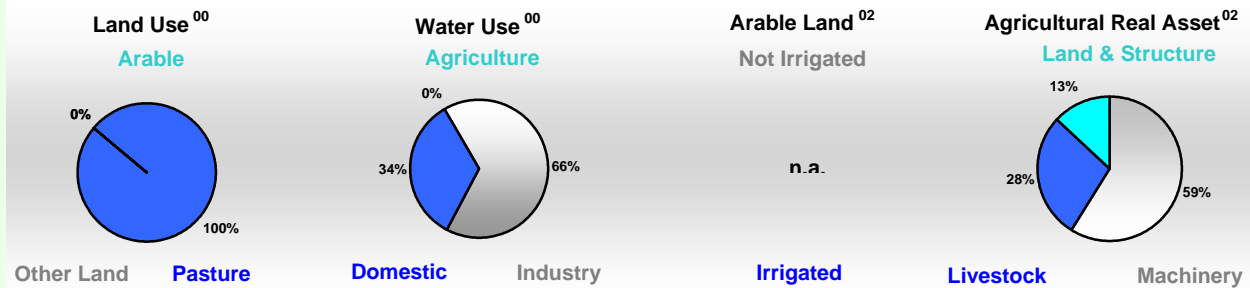


Arable Land ^{00 *}	7
Permanent Crops ^{00 *}	-
Pasture ^{00 *}	2 274
Cattle & Buffaloes ^{03 **}	67
Sheep & Goats ^{03 **}	470
Tractors ^{02 *}	-
Harvesters&Threshers ^{02 *}	4
Fertilizers Production ^{02 ***}	-
Fertilizers Consumption ^{02 ***}	17 888
Rainfall Index ^{02 (mm)}	969

* EAP : Economically Active Population

* 1000ha ** 1000heads *** Tonnes N,P₂O₅,K₂O

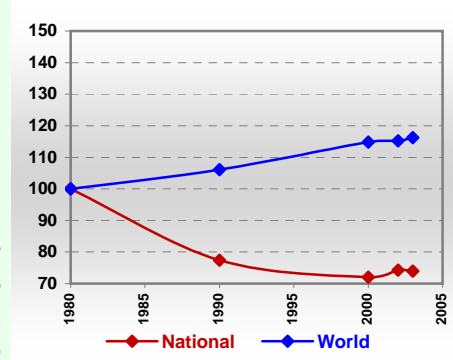
Resources Distribution



Production

Agriculture^{03 *}	Pulpwd.,Rnd&Split ^{**}	-
Cereals	- Roundwood ^{**}	-
Meat	28 Log:Saw&Veneer ^{**}	-
Fruits & Vegetables	4 Sawnwood ^{**}	-
Roots & Tubers	7 Wood Charcoal [*]	-
Pulses	- Woodfuel ^{**}	-
Oilseeds & Nuts	- Wood Pulp [*]	-
Sugar Crops	- Wood-based Panels ^{**}	-
Tobacco	-	-
Fibre Crops	-	-
Forestry⁰²	Fisheries^{02 *}	1 303
Indust.Roundwood ^{**}	- Pelagic	3
Paper, Paperboard [*]	- Freshwater	772
	- Demersal	18
	- Molluscs	-

Per Capita Agricultural Production Index



* 1000Tonnes ** 1000m³

Time reference= ⁹⁹⁻⁰¹:1999-2001, ⁰⁰:2000, ⁰²:2002, ⁰⁰⁻⁰²:2000-2002, ⁰³:2003, ⁰⁴:2004, ^{ly}:Latest Available Year

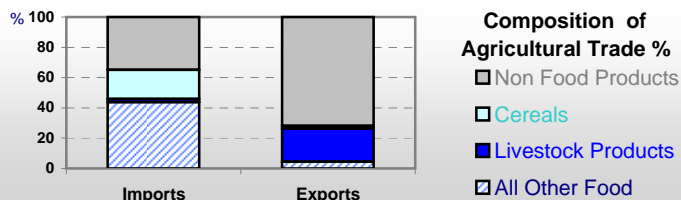


Country profiles

Iceland

Trade ⁰²

Agricultural Imports *	204
% 4 Major Imports in Agr.Imp	21
% Agr. Imports in Tot. Imports	9
Fishery Imports *	73
Forestry Imports *	53
Agricultural Exports *	34
% 4 Major Exports in Agr.Exp.	50
% Agr. Exports in Tot.Exports	2
Fishery Exports *	1 429
Forestry Exports *	0



Trade Partners & Products

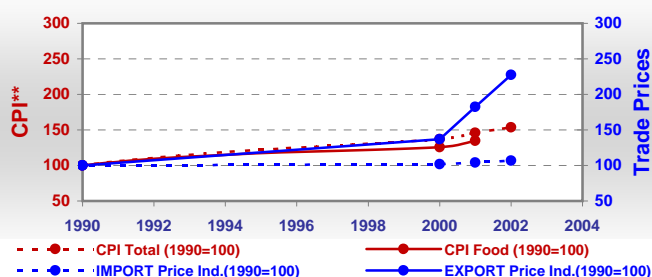
Major Import Partner	USA	Denmark	Netherlands
Major Export Partner	Denmark	UK	Norway
Major Imports	Food Prep	Cigarettes	Pastry
Major Exports	Fish Meal	Oils Fish	Mutton Lamb

* Million \$

Prices

Producer Prices ⁰⁰⁻⁰²	\$*	\$ Green *
Wheat	-	-
Rice	-	-
Maize	-	-
Soybean	-	-
Coffee	-	-
Tobacco	-	-
Cow Milk	793	281
Cattle (Live Weight)	2 815	990
Pig (Live Weight)	2 304	813
Chicken (Live Weight)	3 208	1 134

Consumer and Agricultural Trade Price Indices

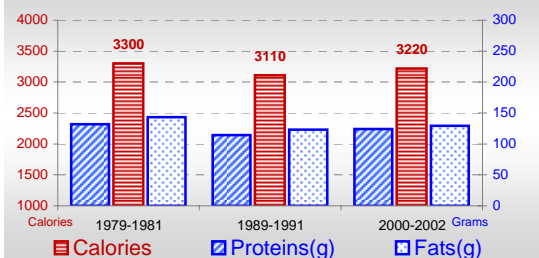


* per Tonne

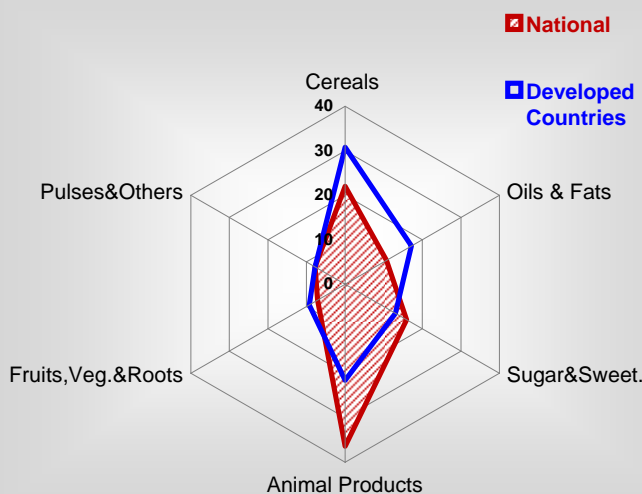
** CPI : Consumer Price Index

Consumption

Per Capita Daily Consumption



Source of Dietary Energy Consumption % ⁰⁰⁻⁰²



Per Capita Daily Calorie Intake From Selected Food Items ⁰⁰⁻⁰²

Rice	35
Wheat	642
Maize	-
Sorghum	-
Potatoes	87
Cassava	-
Sugar	449
Soybean Oil	125
Palm Oil	-
Milk	451
Anim.Fats(Raw&Butter)	109
Eggs	30
Pig Meat	191
Poultry Meat	47
Bovine Meat	79
Sheep & Goats Meat	170

Food Balance ⁰⁰⁻⁰² (1000Tonnes)

Food Groups	Production (+)	Exports (-)	Imports (+)	Seed, Feed, Other Uses (-)	Consumption (=)
Cereals	-	-	85	61	24
Veg.oils	-	-	5	3	2
Sugar&Sw.	11	-	14	9	16
Roots&Tub.	10	0	7	2	15
Meat	25	2	-	0	23
Milk	107	-	1	39	69

Time reference= ⁹⁹⁻⁰¹:1999-2001, ⁰⁰:2000, ⁰²:2002, ⁰⁰⁻⁰²:2000-2002, ⁰³:2003, ⁰⁴:2004, ^{ly}:Latest Available Year