



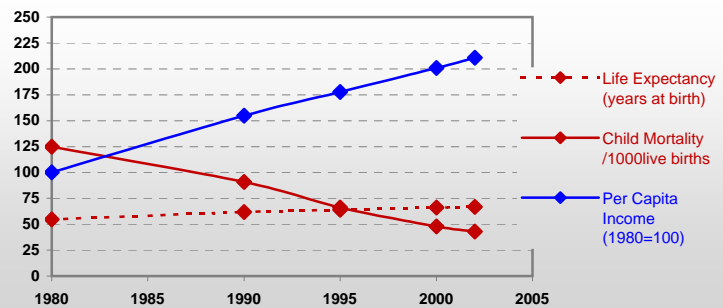
# Country profiles

## Indonesia



### General / Welfare

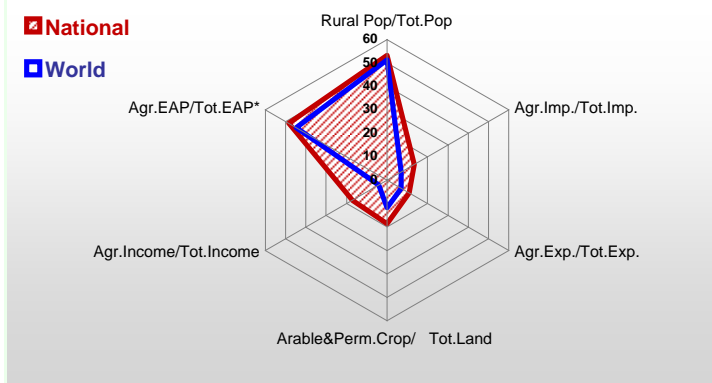
Population <sup>04 *</sup>	222 611
Per Capita Income <sup>02 **</sup>	1 060
Per Capita Agricultural Income <sup>02**</sup>	410
Total Exports <sup>02 ****</sup>	57 159
Total Imports <sup>02 ****</sup>	31 289
Agric. External Assistance <sup>99-01 ***</sup>	1 371 824
Food Consumption Inequality (G) <sup>ly</sup>	0,15
Income Inequality (G) <sup>ly</sup>	0,34
Land Inequality (G) <sup>ly</sup>	0,46
Undernourished Population % <sup>00-02</sup>	6



\* 1000 \*\* \$ \*\*\* 1000 \$ \*\*\*\* Million \$ --- (G) : Gini Coefficient --- Income refers to GDP at 1995 Constant Prices

### Agriculture In The Economy<sup>ly</sup>

### Resources

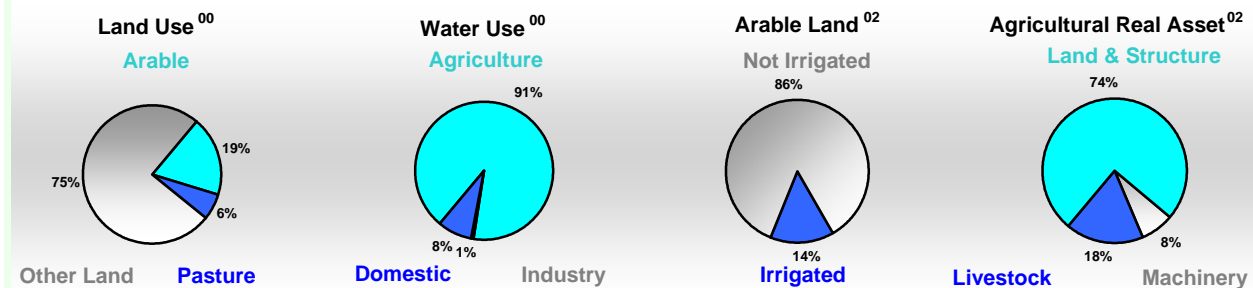


Arable Land <sup>00 *</sup>	20 500
Permanent Crops <sup>00 *</sup>	13 100
Pasture <sup>00 *</sup>	11 177
Cattle & Buffaloes <sup>03 **</sup>	13 851
Sheep & Goats <sup>03 **</sup>	21 410
Tractors <sup>02 *</sup>	5
Harvesters&Threshers <sup>02 *</sup>	16
Fertilizers Production <sup>02 ***</sup>	3 083 775
Fertilizers Consumption <sup>02 ***</sup>	2 992 000
Rainfall Index <sup>02 (mm)</sup>	2 749

\* EAP : Economically Active Population

\* 1000ha \*\* 1000heads \*\*\* Tonnes N,P<sub>2</sub>O<sub>5</sub>,K<sub>2</sub>O

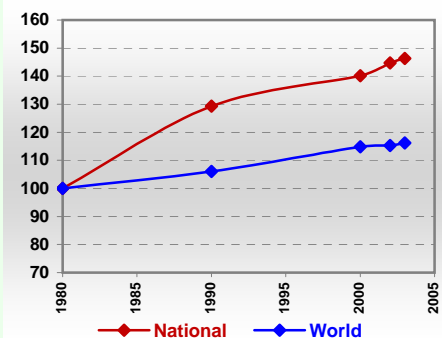
### Resources Distribution



### Production

<b>Agriculture<sup>03 *</sup></b>		<b>Pulpwd.,Rnd&amp;Split<sup>**</sup></b>	3 248
Cereals	62 989	Roundwood <sup>**</sup>	115 552
Meat	2 209	Log:Saw&Veneer <sup>**</sup>	26 500
Fruits & Vegetables	18 785	Sawnwood <sup>**</sup>	6 500
Roots & Tubers	21 673	Wood Charcoal <sup>*</sup>	71
Pulses	318	Woodfuel <sup>**</sup>	82 556
Oilseeds & Nuts	14 026	Wood Pulp <sup>*</sup>	5 482
Sugar Crops	24 500	Wood-based Panels <sup>**</sup>	12 635
Tobacco	135	<b>Fisheries<sup>02 *</sup></b>	
Fibre Crops	106	Pelagic	2 184
<b>Forestry<sup>02</sup></b>		Freshwater	1 089
Indust.Roundwood <sup>**</sup>	32 997	Demersal	808
Paper, Paperboard <sup>*</sup>	6 995	Molluscs	90

### Per Capita Agricultural Production Index



\* 1000Tonnes \*\* 1000m<sup>3</sup>

Time reference= <sup>99-01</sup> :1999-2001, <sup>00</sup> :2000, <sup>02</sup> :2002, <sup>00-02</sup> :2000-2002, <sup>03</sup> :2003, <sup>04</sup> :2004, <sup>ly</sup> :Latest Available Year

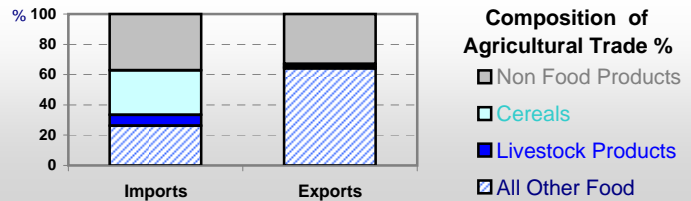


# Country profiles

## Indonesia

### Trade <sup>02</sup>

Agricultural Imports *	4 201
% 4 Major Imports in Agr.Imp	40
% Agr. Imports in Tot. Imports	13
Fishery Imports *	77
Forestry Imports *	975
Agricultural Exports *	6 207
% 4 Major Exports in Agr.Exp.	55
% Agr. Exports in Tot.Exports	11
Fishery Exports *	1 491
Forestry Exports *	4 705



### Trade Partners & Products

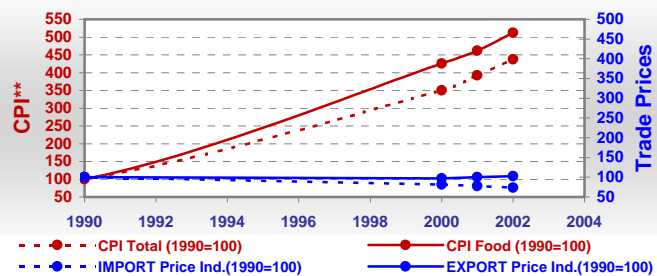
<b>Major Import Partner</b>	Australia	USA	China
<b>Major Export Partner</b>	USA	India	Netherlands
<b>Major Imports</b>	Cotton Lint	Wheat	Soybeans
<b>Major Exports</b>	Oil of Palm	Rubber Dry	Cocoa Beans

\* Million \$

### Prices

Producer Prices <sup>00-02</sup>	\$*	\$ Green *
Wheat	-	-
Rice	124	137
Maize	124	138
Soybean	278	308
Coffee	860	948
Tobacco	566	626
Cow Milk	115	128
Cattle (Live Weight)	1 100	1 215
Pig (Live Weight)	979	1 082
Chicken (Live Weight)	947	1 047

### Consumer and Agricultural Trade Price Indices

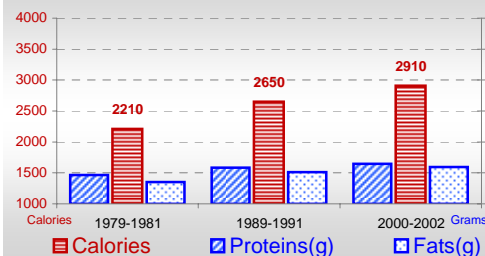


\* per Tonne

\*\* CPI : Consumer Price Index

### Consumption

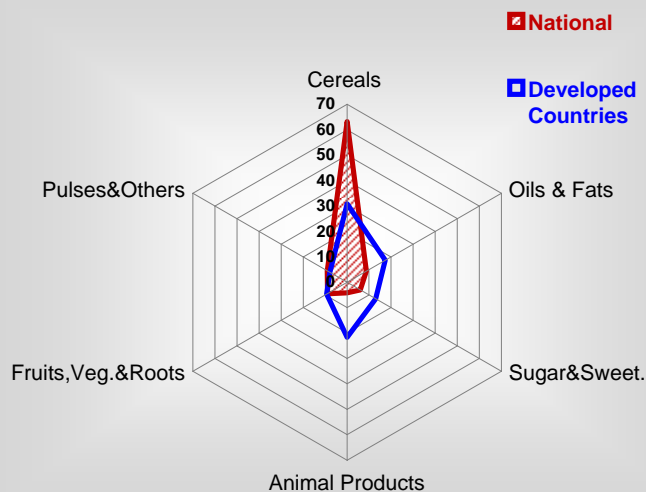
#### Per Capita Daily Consumption



#### Per Capita Daily Calorie Intake From Selected Food Items <sup>00-02</sup>

Rice	1469
Wheat	131
Maize	241
Sorghum	-
Potatoes	7
Cassava	155
Sugar	161
Soybean Oil	2
Palm Oil	192
Milk	10
Anim.Fats(Raw&Butter)	7
Eggs	13
Pig Meat	21
Poultry Meat	14
Bovine Meat	10
Sheep & Goats Meat	2

#### Source of Dietary Energy Consumption % <sup>00-02</sup>



### Food Balance <sup>00-02 (1000Tonnes)</sup>

Food Groups	Production (+)	Exports (-)	Imports (+)	Seed, Feed, Other Uses (-)	Consumption (=)
Cereals	43 743	133	6 663	6 833	43 440
Veg.oils	9 772	6 992	61	677	2 164
Sugar&Sw.	2 351	48	1 390	-84	3 777
Roots&Tub.	19 697	672	575	5 069	14 531
Meat	1 752	12	35	-8	1 783
Milk	797	295	1 167	95	1 574

Time reference= <sup>99-01</sup>:1999-2001, <sup>00</sup>:2000, <sup>02</sup>:2002, <sup>00-02</sup>:2000-2002, <sup>03</sup>:2003, <sup>04</sup>:2004, <sup>ly</sup>:Latest Available Year