



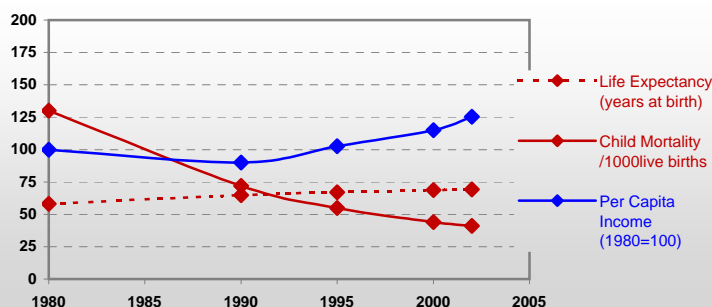
# Country profiles

## Iran



### General / Welfare

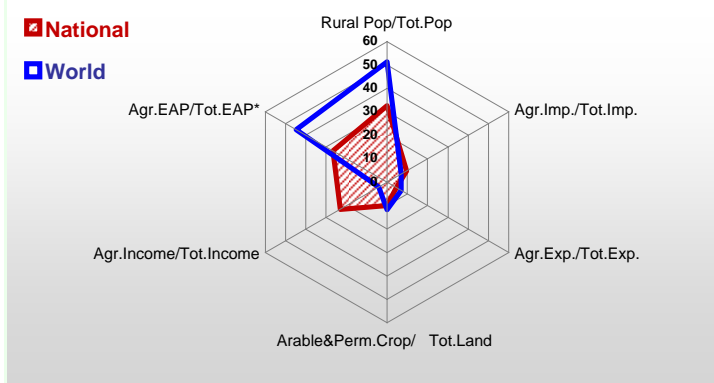
Population <sup>04 *</sup>	69 788
Per Capita Income <sup>02 **</sup>	1 801
Per Capita Agricultural Income <sup>02**</sup>	1 567
Total Exports <sup>02 ****</sup>	28 186
Total Imports <sup>02 ****</sup>	23 786
Agric. External Assistance <sup>99-01 ***</sup>	1 492
Food Consumption Inequality (G) <sup>ly</sup>	0,15
Income Inequality (G) <sup>ly</sup>	0,43
Land Inequality (G) <sup>ly</sup>	0,70
Undernourished Population % <sup>00-02</sup>	4



\*1000 \*\* \$ \*\*\* 1000 \$ \*\*\*\* Million \$ --- (G) : Gini Coefficient --- Income refers to GDP at 1995 Constant Prices

### Agriculture In The Economy<sup>ly</sup>

### Resources

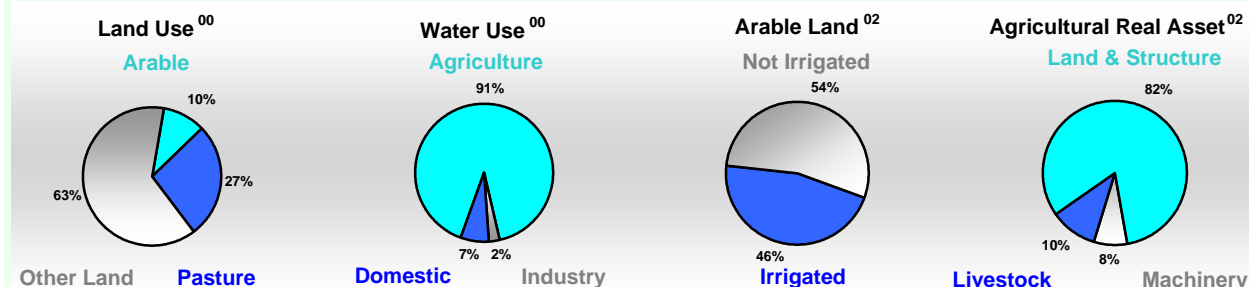


Arable Land <sup>00 *</sup>	14 324
Permanent Crops <sup>00 *</sup>	2 002
Pasture <sup>00 *</sup>	44 000
Cattle & Buffaloes <sup>03 **</sup>	9 550
Sheep & Goats <sup>03 **</sup>	79 900
Tractors <sup>02 *</sup>	16
Harvesters&Threshers <sup>02 *</sup>	0
Fertilizers Production <sup>02 ***</sup>	917 048
Fertilizers Consumption <sup>02 ***</sup>	1 291 547
Rainfall Index <sup>02 (mm)</sup>	258

\* EAP : Economically Active Population

\* 1000ha \*\* 1000heads \*\*\* Tonnes N,P<sub>2</sub>O<sub>5</sub>,K<sub>2</sub>O

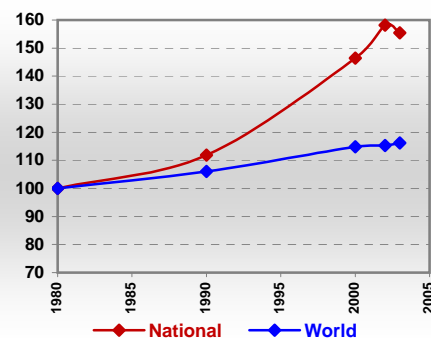
### Resources Distribution



### Production

<b>Agriculture<sup>03 *</sup></b>		Pulpwd.,Rnd&Split <sup>**</sup>	488
Cereals	21 610	Roundwood <sup>**</sup>	1 317
Meat	1 603	Log:Saw&Veneer <sup>**</sup>	319
Fruits & Vegetables	24 494	Sawnwood <sup>**</sup>	106
Roots & Tubers	3 550	Wood Charcoal <sup>*</sup>	22
Pulses	581	Woodfuel <sup>**</sup>	257
Oilseeds & Nuts	688	Wood Pulp <sup>*</sup>	-
Sugar Crops	11 500	Wood-based Panels <sup>**</sup>	414
Tobacco	20	<b>Fisheries<sup>02 *</sup></b>	
Fibre Crops	120	Pelagic	131
<b>Forestry<sup>02</sup></b>		Freshwater	120
Indust.Roundwood <sup>**</sup>	1 060	Demersal	15
Paper, Paperboard <sup>*</sup>	46	Molluscs	-

### Per Capita Agricultural Production Index



\* 1000Tonnes \*\* 1000m<sup>3</sup>

Time reference= <sup>99-01</sup>:1999-2001, <sup>00</sup>:2000, <sup>02</sup>:2002, <sup>00-02</sup>:2000-2002, <sup>03</sup>:2003, <sup>04</sup>:2004, <sup>ly</sup>:Latest Available Year

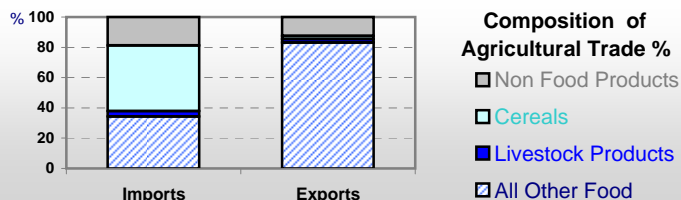


# Country profiles

## Iran

### Trade <sup>02</sup>

Agricultural Imports *	2 106
% 4 Major Imports in Agr.Imp	22
% Agr. Imports in Tot. Imports	9
Fishery Imports *	30
Forestry Imports *	453
Agricultural Exports *	1 107
% 4 Major Exports in Agr.Exp.	45
% Agr. Exports in Tot.Exports	5
Fishery Exports *	51
Forestry Exports *	2



### Trade Partners & Products

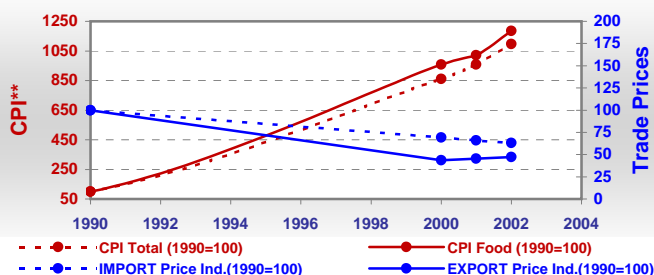
<b>Major Import Partner</b>	Brazil	Untd Arab Em	Australia
<b>Major Export Partner</b>	Untd Arab Em	Germany	China
<b>Major Imports</b>	Wheat	Oil Soyabean	Mil Rice
<b>Major Exports</b>	Pistachios	Raisins	Chick-Peas

\* Million \$

### Prices

Producer Prices <sup>00-02</sup>	\$*	\$ Green *
Wheat	427	178
Rice	966	408
Maize	350	146
Soybean	807	329
Coffee	-	-
Tobacco	1 097	457
Cow Milk	512	205
Cattle (Live Weight)	3 702	1 561
Pig (Live Weight)	-	-
Chicken (Live Weight)	3 613	1 398

### Consumer and Agricultural Trade Price Indices

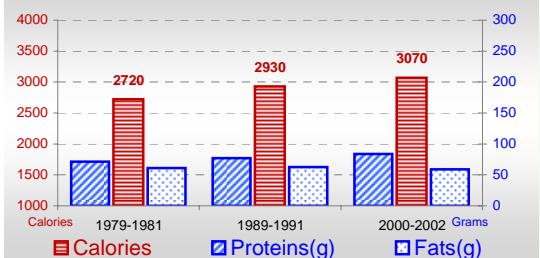


\* per Tonne

\*\* CPI : Consumer Price Index

### Consumption

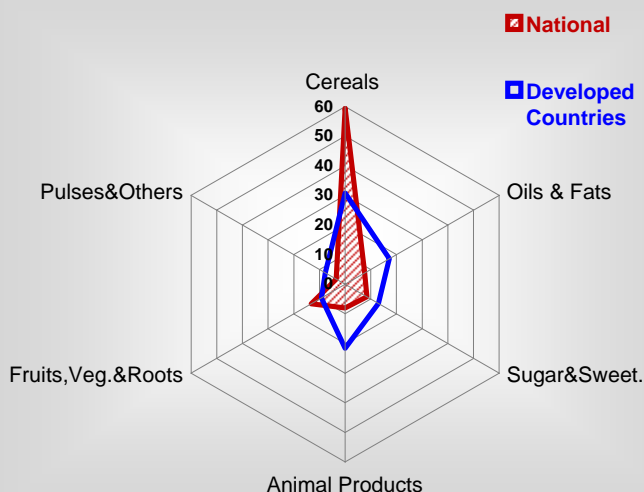
#### Per Capita Daily Consumption



#### Per Capita Daily Calorie Intake From Selected Food Items <sup>00-02</sup>

Rice	312
Wheat	1498
Maize	10
Sorghum	-
Potatoes	93
Cassava	-
Sugar	255
Soybean Oil	122
Palm Oil	-
Milk	90
Anim.Fats(Raw&Butter)	49
Eggs	26
Pig Meat	-
Poultry Meat	44
Bovine Meat	26
Sheep & Goats Meat	43

#### Source of Dietary Energy Consumption % <sup>00-02</sup>



### Food Balance <sup>00-02</sup> (1000Tonnes)

Food Groups	Production (+)	Exports (-)	Imports (+)	Seed, Feed, Others Uses (-)	Consumption (=)
Cereals	15 140	72	8 689	9 847	13 910
Veg.oils	167	166	921	401	521
Sugar&Sw.	944	28	955	87	1 784
Roots&Tub.	3 633	78	25	545	3 035
Meat	1 591	10	30	0	1 611
Milk	5 926	29	61	2 035	3 923

Time reference= <sup>99-01</sup>:1999-2001, <sup>00</sup>:2000, <sup>02</sup>:2002, <sup>00-02</sup>:2000-2002, <sup>03</sup>:2003, <sup>04</sup>:2004, <sup>ly</sup>:Latest Available Year