



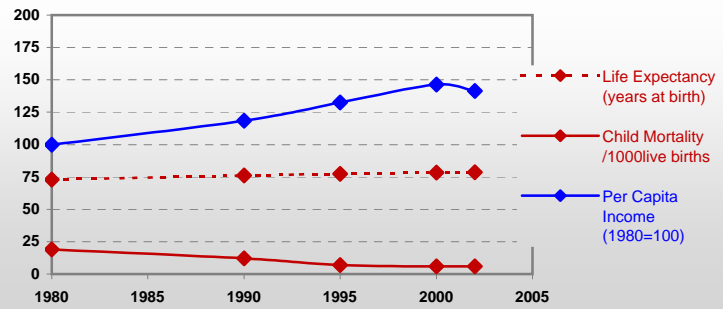
# Country profiles

## Israel



### General / Welfare

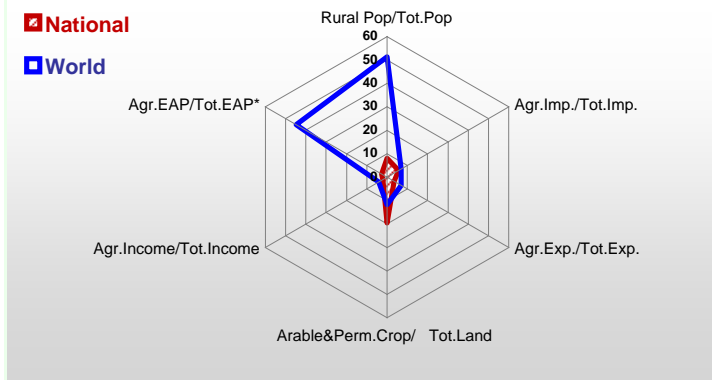
Population <sup>04 *</sup>	6 560
Per Capita Income <sup>02 **</sup>	16 676
Per Capita Agricultural Income <sup>02**</sup>	16 529
Total Exports <sup>02 ****</sup>	29 347
Total Imports <sup>02 ****</sup>	33 106
Agric. External Assistance <sup>99-01 ***</sup>	2 406
Food Consumption Inequality (G) <sup>ly</sup>	0,11
Income Inequality (G) <sup>ly</sup>	0,36
Land Inequality (G) <sup>ly</sup>	-
Undernourished Population % <sup>00-02</sup>	< 2.5



\* 1000 \*\* \$ \*\*\*\* Million \$ --- (G) : Gini Coefficient --- Income refers to GDP at 1995 Constant Prices

### Agriculture In The Economy<sup>ly</sup>

### Resources

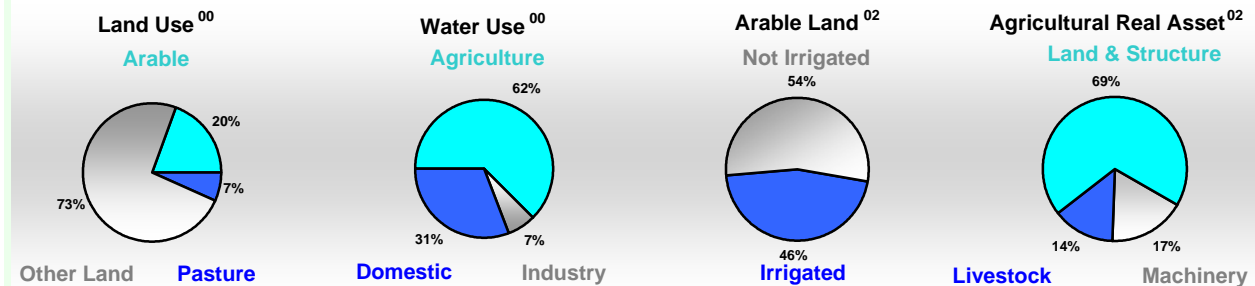


Arable Land <sup>00 *</sup>	338
Permanent Crops <sup>00 *</sup>	86
Pasture <sup>00 *</sup>	142
Cattle & Buffaloes <sup>03 **</sup>	390
Sheep & Goats <sup>03 **</sup>	458
Tractors <sup>02 *</sup>	72
Harvesters&Threshers <sup>02 *</sup>	1
Fertilizers Production <sup>02 ***</sup>	2 269 600
Fertilizers Consumption <sup>02 ***</sup>	81 300
Rainfall Index <sup>02 (mm)</sup>	427

\* EAP : Economically Active Population

\* 1000ha \*\* 1000heads \*\*\* Tonnes N,P<sub>2</sub>O<sub>5</sub>,K<sub>2</sub>O

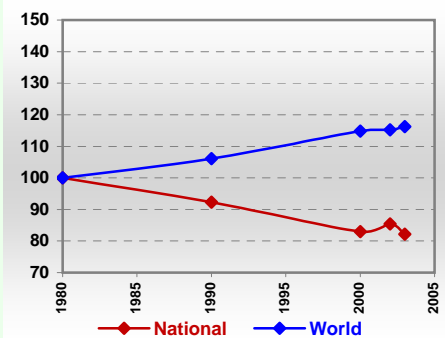
### Resources Distribution



### Production

<b>Agriculture<sup>03 *</sup></b>			
Cereals	303	Pulpwd.,Rnd&Split <sup>**</sup>	7
Meat	565	Roundwood <sup>**</sup>	27
Fruits & Vegetables	2 761	Log:Saw&Veneer <sup>**</sup>	11
Roots & Tubers	434	Sawnwood <sup>**</sup>	-
Pulses	17	Wood Charcoal <sup>*</sup>	-
Oilseeds & Nuts	32	Woodfuel <sup>**</sup>	2
Sugar Crops	-	Wood Pulp <sup>*</sup>	-
Tobacco	-	Wood-based Panels <sup>**</sup>	181
Fibre Crops	18	<b>Fisheries<sup>02 *</sup></b>	
		Pelagic	1
		Freshwater	19
<b>Forestry<sup>02</sup></b>		Demersal	7
Indust.Roundwood <sup>**</sup>	25	Molluscs	-
Paper, Paperboard <sup>*</sup>	275		

### Per Capita Agricultural Production Index



\* 1000Tonnes \*\* 1000m<sup>3</sup>

Time reference= <sup>99-01</sup> :1999-2001, <sup>00</sup> :2000, <sup>02</sup> :2002, <sup>00-02</sup> :2000-2002, <sup>03</sup> :2003, <sup>04</sup> :2004, <sup>ly</sup> :Latest Available Year

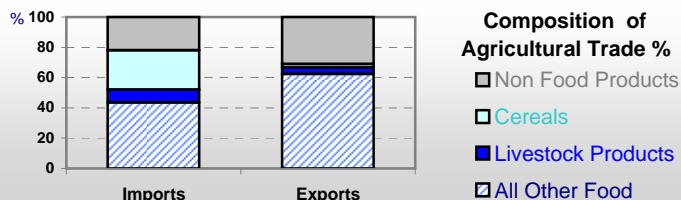


# Country profiles

## Israel

### Trade <sup>02</sup>

Agricultural Imports *	1 901
% 4 Major Imports in Agr.Imp	19
% Agr. Imports in Tot. Imports	6
Fishery Imports *	134
Forestry Imports *	759
Agricultural Exports *	1 022
% 4 Major Exports in Agr.Exp.	32
% Agr. Exports in Tot.Exports	3
Fishery Exports *	8
Forestry Exports *	45



### Trade Partners & Products

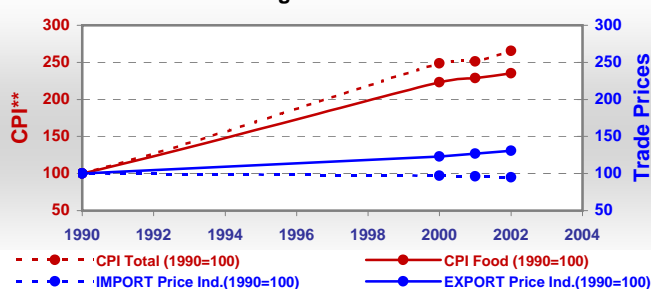
Major Import Partner	USA	UK	Netherlands
Major Export Partner	Netherlands	UK	USA
Major Imports	Wheat	Food Prep	Soybeans
Major Exports	Food Prep	Seeds	Avocados

\* Million \$

### Prices

Producer Prices <sup>00-02</sup>	\$*	\$ Green *
Wheat	161	123
Rice	-	-
Maize	434	330
Soybean	-	-
Coffee	-	-
Tobacco	2 449	1 874
Cow Milk	350	266
Cattle (Live Weight)	1 788	1 361
Pig (Live Weight)	2 588	1 981
Chicken (Live Weight)	605	461

### Consumer and Agricultural Trade Price Indices



\* per Tonne

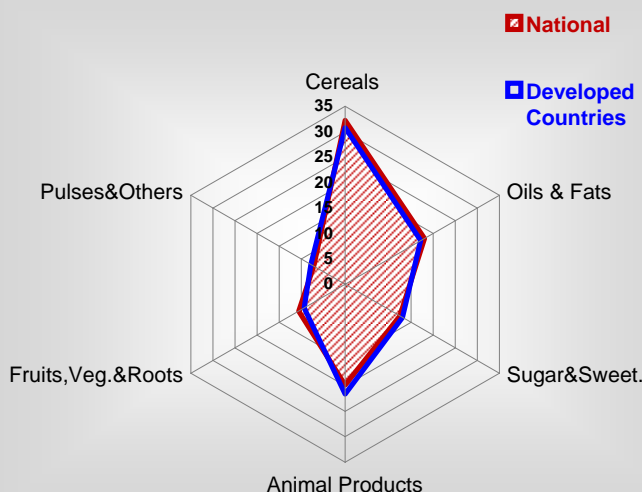
\*\* CPI : Consumer Price Index

### Consumption

#### Per Capita Daily Consumption



#### Source of Dietary Energy Consumption % <sup>00-02</sup>



#### Per Capita Daily Calorie Intake From Selected Food Items <sup>00-02</sup>

Rice	103
Wheat	973
Maize	81
Sorghum	-
Potatoes	83
Cassava	-
Sugar	438
Soybean Oil	298
Palm Oil	66
Milk	244
Anim.Fats(Raw&Butter)	26
Eggs	41
Pig Meat	26
Poultry Meat	247
Bovine Meat	104
Sheep & Goats Meat	8

#### Food Balance <sup>00-02 (1000Tonnes)</sup>

Food Groups	Production (+)	Exports (-)	Imports (+)	Seed, Feed, Other Uses (-)	Consumption (=)
Cereals	234	18	3 366	2 659	923
Veg.oils	135	4	109	85	155
Sugar&Sw.	3	30	495	177	291
Roots&Tub.	406	114	69	78	283
Meat	523	7	74	1	589
Milk	1 260	11	134	55	1 328

Time reference= <sup>99-01</sup>:1999-2001, <sup>00</sup>:2000, <sup>02</sup>:2002, <sup>00-02</sup>:2000-2002, <sup>03</sup>:2003, <sup>04</sup>:2004, <sup>ly</sup>:Latest Available Year