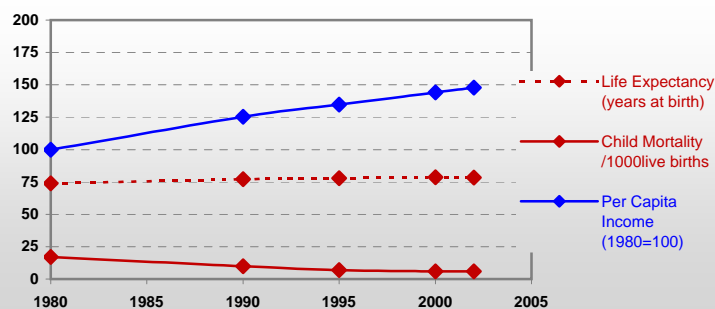


Italy



General / Welfare

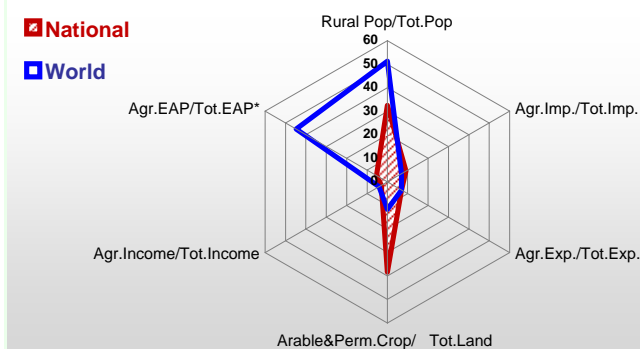
Population ^{04 *}	57 346
Per Capita Income ^{02 **}	21 396
Per Capita Agricultural Income ^{02**}	12 496
Total Exports ^{02 ****}	254 535
Total Imports ^{02 ****}	247 120
Agric. External Assistance ^{99-01 ***}	-114 390
Food Consumption Inequality (G) ^{ly}	0,11
Income Inequality (G) ^{ly}	0,36
Land Inequality (G) ^{ly}	0,73
Undernourished Population % ⁰⁰⁻⁰²	< 2.5



* 1000 ** \$ *** 1000 \$ **** Million \$ --- (G): Gini Coefficient --- Income refers to GDP at 1995 Constant Prices

Agriculture In The Economy^{ly}

Resources

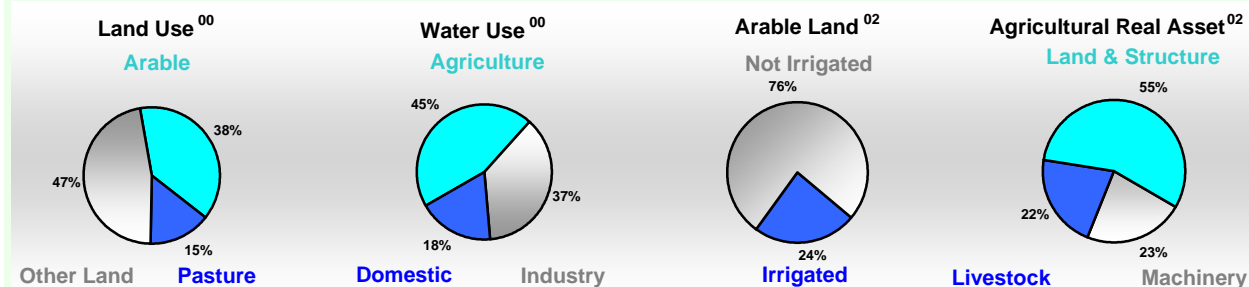


Arable Land ^{00 *}	8 479
Permanent Crops ^{00 *}	2 805
Pasture ^{00 *}	4 353
Cattle & Buffaloes ^{03 **}	6 660
Sheep & Goats ^{03 **}	12 280
Tractors ^{02 *}	200
Harvesters&Threshers ^{02 *}	6
Fertilizers Production ^{02 ***}	450 200
Fertilizers Consumption ^{02 ***}	1 432 642
Rainfall Index ^{02 (mm)}	932

* EAP: Economically Active Population

* 1000ha ** 1000heads *** Tonnes N,P₂O₅,K₂O

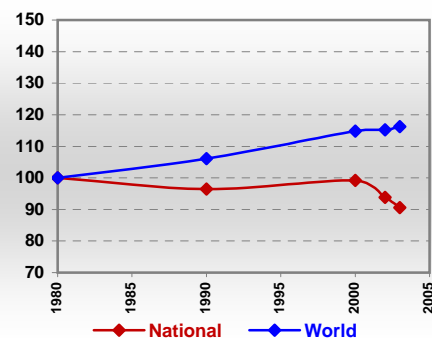
Resources Distribution



Production

Agriculture^{03 *}			
Cereals	18 113	Pulpwd.,Rnd&Split ^{**}	590
Meat	4 093	Roundwood ^{**}	7 789
Fruits & Vegetables	30 882	Log:Saw&Veneer ^{**}	1 840
Roots & Tubers	1 972	Sawnwood ^{**}	1 605
Pulses	121	Wood Charcoal [*]	10
Oilseeds & Nuts	1 152	Woodfuel ^{**}	4 567
Sugar Crops	9 726	Wood Pulp [*]	423
Tobacco	106	Wood-based Panels ^{**}	5 520
Fibre Crops	2	Fisheries^{02 *}	
Forestry⁰²		Pelagic	87
Indust.Roundwood ^{**}	3 222	Freshwater	42
Paper, Paperboard [*]	9 273	Demersal	55
		Molluscs	212

Per Capita Agricultural Production Index



* 1000Tonnes ** 1000m³

Time reference= ⁹⁹⁻⁰¹:1999-2001, ⁰⁰:2000, ⁰²:2002, ⁰⁰⁻⁰²:2000-2002, ⁰³:2003, ⁰⁴:2004, ^{ly}:Latest Available Year

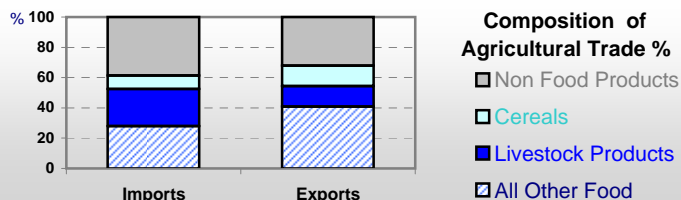


Country profiles

Italy

Trade ⁰²

Agricultural Imports *	22 191
% 4 Major Imports in Agr.Imp	14
% Agr. Imports in Tot. Imports	9
Fishery Imports *	2 906
Forestry Imports *	7 415
Agricultural Exports *	17 453
% 4 Major Exports in Agr.Exp.	23
% Agr. Exports in Tot.Exports	7
Fishery Exports *	424
Forestry Exports *	3 242



Trade Partners & Products

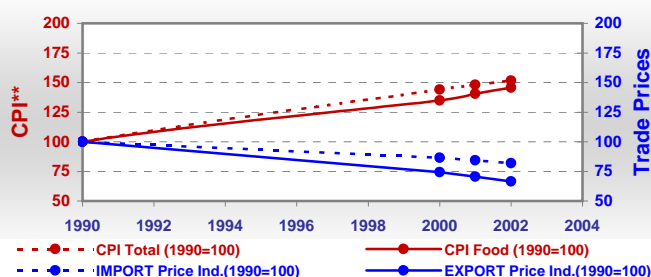
Major Import Partner	France	Germany	Netherlands
Major Export Partner	Germany	France	USA
Major Imports	Cigarettes	Wheat	Oil of Olive
Major Exports	Wine	Macaroni	Food Prep

* Million \$

Prices

Producer Prices ⁰⁰⁻⁰²	\$*	\$ Green *
Wheat	156	108
Rice	254	175
Maize	133	91
Soybean	186	128
Coffee	-	-
Tobacco	3 030	2 089
Cow Milk	326	225
Cattle (Live Weight)	2 040	1 406
Pig (Live Weight)	1 496	1 033
Chicken (Live Weight)	852	587

Consumer and Agricultural Trade Price Indices

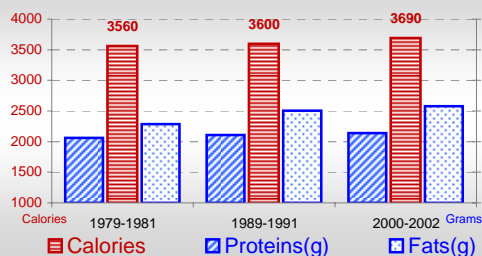


* per Tonne

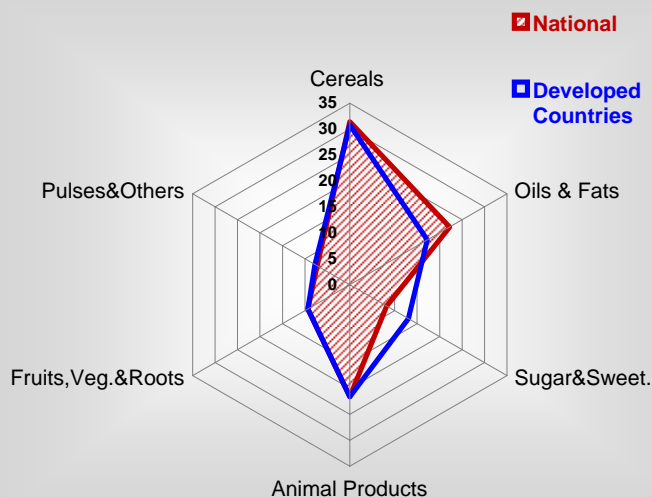
** CPI : Consumer Price Index

Consumption

Per Capita Daily Consumption



Source of Dietary Energy Consumption % ⁰⁰⁻⁰²



Per Capita Daily Calorie Intake From Selected Food Items ⁰⁰⁻⁰²

Rice	58
Wheat	1068
Maize	29
Sorghum	-
Potatoes	70
Cassava	-
Sugar	289
Soybean Oil	94
Palm Oil	17
Milk	287
Anim.Fats(Raw&Butter)	144
Eggs	47
Pig Meat	182
Poultry Meat	62
Bovine Meat	134
Sheep & Goats Meat	10

Food Balance ^{00-02 (1000Tonnes)}

Food Groups	Production (+)	Exports (-)	Imports (+)	Seed, Feed, Other Uses (-)	Consumption (=)
Cereals	20 302	4 764	9 584	15 846	9 276
Veg.oils	1 208	686	1 547	503	1 566
Sugar&Sw.	1 883	610	669	132	1 810
Roots&Tub.	2 064	314	1 124	571	2 303
Meat	4 142	419	1 556	21	5 258
Milk	12 674	1 479	6 584	2 652	15 127

Time reference= ⁹⁹⁻⁰¹:1999-2001, ⁰⁰:2000, ⁰²:2002, ⁰⁰⁻⁰²:2000-2002, ⁰³:2003, ⁰⁴:2004, ^{ly}:Latest Available Year