



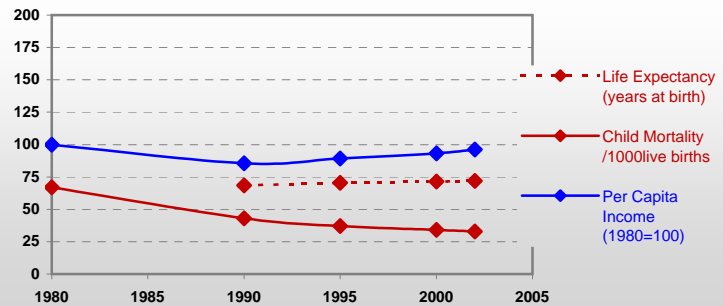
# Country profiles

## Jordan



### General / Welfare

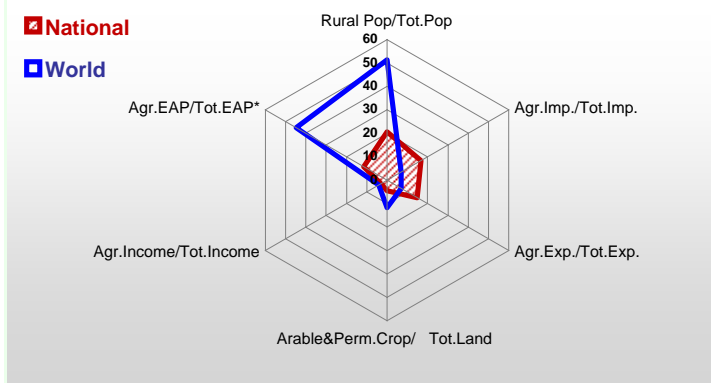
Population <sup>04 *</sup>	5 614
Per Capita Income <sup>02 **</sup>	1 660
Per Capita Agricultural Income <sup>02**</sup>	413
Total Exports <sup>02 ****</sup>	2 769
Total Imports <sup>02 ****</sup>	4 999
Agric. External Assistance <sup>99-01 ***</sup>	250 695
Food Consumption Inequality (G) <sup>ly</sup>	0,14
Income Inequality (G) <sup>ly</sup>	0,36
Land Inequality (G) <sup>ly</sup>	0,78
Undernourished Population % <sup>00-02</sup>	7



\*1000 \*\* \$ \*\*\* 1000 \$ \*\*\*\* Million \$ --- (G) : Gini Coefficient --- Income refers to GDP at 1995 Constant Prices

### Agriculture In The Economy<sup>ly</sup>

### Resources

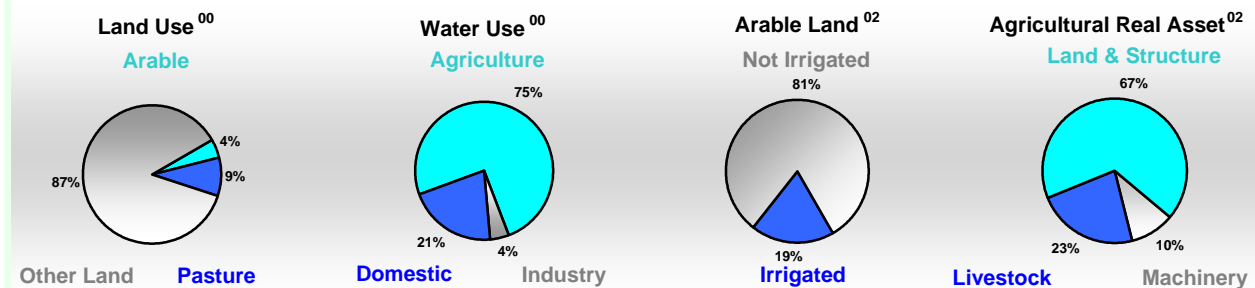


Arable Land <sup>00 *</sup>	242
Permanent Crops <sup>00 *</sup>	157
Pasture <sup>00 *</sup>	791
Cattle & Buffaloes <sup>03 **</sup>	67
Sheep & Goats <sup>03 **</sup>	2 024
Tractors <sup>02 *</sup>	20
Harvesters&Threshers <sup>02 *</sup>	0
Fertilizers Production <sup>02 ***</sup>	1 601 900
Fertilizers Consumption <sup>02 ***</sup>	33 500
Rainfall Index <sup>02 (mm)</sup>	179

\* EAP : Economically Active Population

\* 1000ha \*\* 1000heads \*\*\* Tonnes N,P<sub>2</sub>O<sub>5</sub>,K<sub>2</sub>O

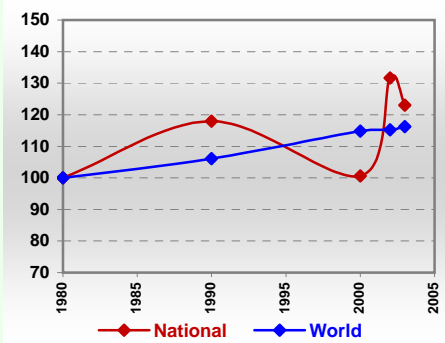
### Resources Distribution



### Production

<b>Agriculture<sup>03 *</sup></b>		
Cereals	80	Pulpwd.,Rnd&Split **
Meat	123	Roundwood **
Fruits & Vegetables	1 455	Log:Saw&Veneer **
Roots & Tubers	122	Sawnwood **
Pulses	6	Wood Charcoal *
Oilseeds & Nuts	21	Woodfuel **
Sugar Crops	-	Wood Pulp *
Tobacco	2	Wood-based Panels **
Fibre Crops	-	<b>Fisheries<sup>02 *</sup></b>
<b>Forestry<sup>02</sup></b>		Pelagic
Indust.Roundwood **	4	Freshwater
Paper, Paperboard *	25	Demersal
		Molluscs

### Per Capita Agricultural Production Index



\* 1000Tonnes \*\* 1000m<sup>3</sup>

Time reference= <sup>99-01</sup> :1999-2001, <sup>00</sup> :2000, <sup>02</sup> :2002, <sup>00-02</sup> :2000-2002, <sup>03</sup> :2003, <sup>04</sup> :2004, <sup>ly</sup> :Latest Available Year

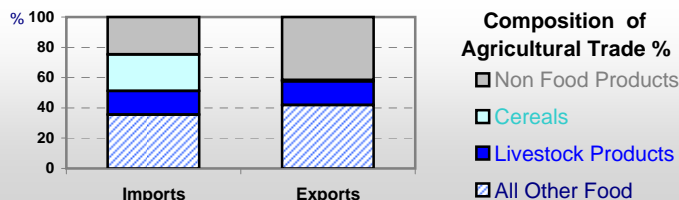


# Country profiles

## Jordan

### Trade <sup>02</sup>

Agricultural Imports *	832
% 4 Major Imports in Agr.Imp	15
% Agr. Imports in Tot. Imports	17
Fishery Imports *	27
Forestry Imports *	167
Agricultural Exports *	412
% 4 Major Exports in Agr.Exp.	24
% Agr. Exports in Tot.Exports	15
Fishery Exports *	1
Forestry Exports *	24



### Trade Partners & Products

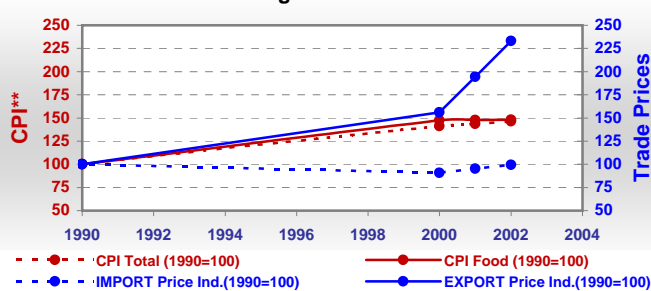
<b>Major Import Partner</b>	USA	Argentina	Australia
<b>Major Export Partner</b>	Iraq	Untd Arab Em	Kuwait
<b>Major Imports</b>	Maize	Wheat	Oil of Palm
<b>Major Exports</b>	Oils Hydrogn	Tomatoes	Milk Sk Dr C

\* Million \$

### Prices

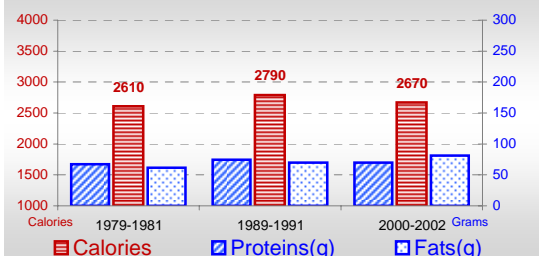
Producer Prices <sup>00-02</sup>	\$*	\$ Green *
Wheat	181	-
Rice	-	-
Maize	131	-
Soybean	-	-
Coffee	-	-
Tobacco	958	-
Cow Milk	296	-
Cattle (Live Weight)	1 928	-
Pig (Live Weight)	-	-
Chicken (Live Weight)	1 097	-

### Consumer and Agricultural Trade Price Indices

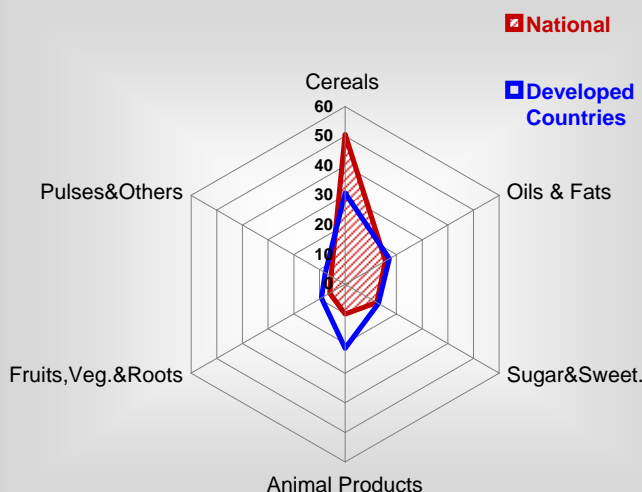


### Consumption

#### Per Capita Daily Consumption



#### Source of Dietary Energy Consumption % <sup>00-02</sup>



#### Per Capita Daily Calorie Intake From Selected Food Items <sup>00-02</sup>

Rice	191
Wheat	835
Maize	318
Sorghum	-
Potatoes	33
Cassava	-
Sugar	322
Soybean Oil	85
Palm Oil	81
Milk	102
Anim.Fats(Raw&Butter)	17
Eggs	29
Pig Meat	-
Poultry Meat	79
Bovine Meat	24
Sheep & Goats Meat	21

### Food Balance <sup>00-02 (1000Tonnes)</sup>

Food Groups	Production (+)	Exports (-)	Imports (+)	Seed, Feed, Other Uses (-)	Consumption (=)
Cereals	73	8	1 453	729	789
Veg.oils	29	110	157	-10	86
Sugar&Sw.	-	6	221	39	176
Roots&Tub.	101	15	39	38	87
Meat	125	2	39	0	162
Milk	205	98	209	11	305

Time reference= <sup>99-01</sup>:1999-2001, <sup>00</sup>:2000, <sup>02</sup>:2002, <sup>00-02</sup>:2000-2002, <sup>03</sup>:2003, <sup>04</sup>:2004, <sup>ly</sup>:Latest Available Year