



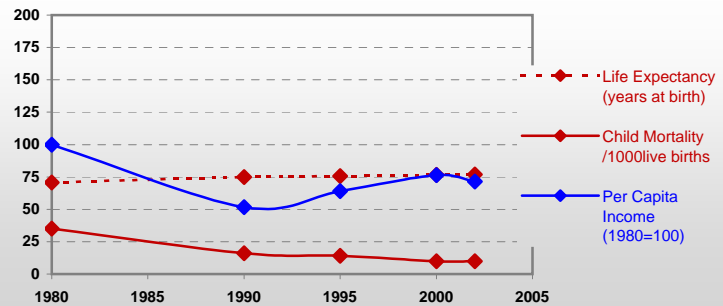
# Country profiles

## Kuwait



### General / Welfare

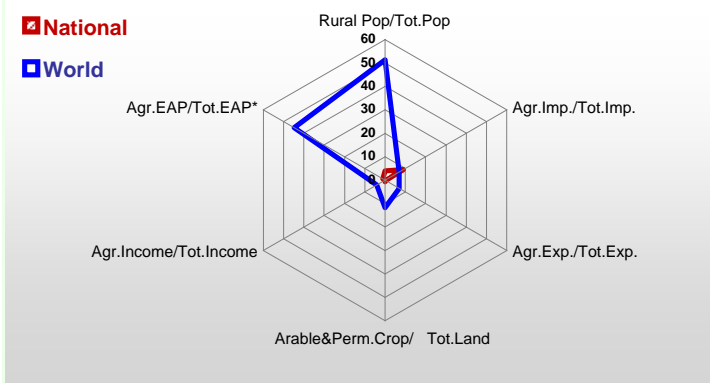
Population <sup>04 *</sup>	2 595
Per Capita Income <sup>02 **</sup>	11 598
Per Capita Agricultural Income <sup>02**</sup>	4 731
Total Exports <sup>02 ****</sup>	15 592
Total Imports <sup>02 ****</sup>	8 995
Agric. External Assistance <sup>99-01 ***</sup>	-
Food Consumption Inequality (G) <sup>ly</sup>	0,14
Income Inequality (G) <sup>ly</sup>	-
Land Inequality (G) <sup>ly</sup>	-
Undernourished Population % <sup>00-02</sup>	5



\*1000 \*\* \$ \*\*\*\* Million \$ --- (G) : Gini Coefficient --- Income refers to GDP at 1995 Constant Prices

### Agriculture In The Economy<sup>ly</sup>

### Resources

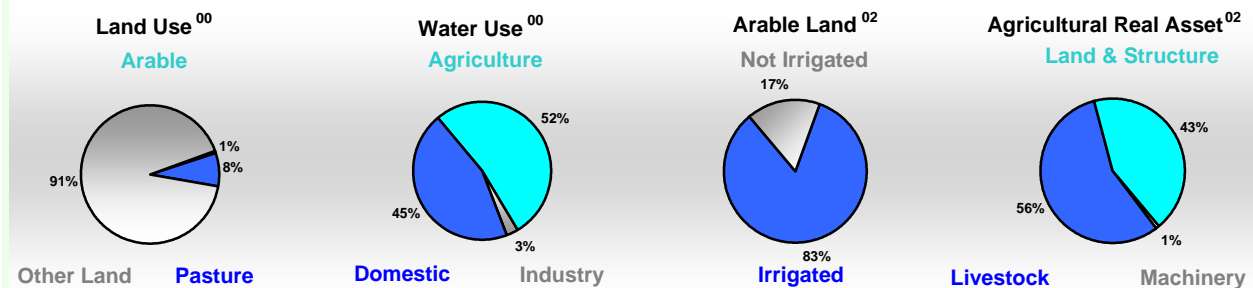


Arable Land <sup>00 *</sup>	10
Permanent Crops <sup>00 *</sup>	2
Pasture <sup>00 *</sup>	136
Cattle & Buffaloes <sup>03 **</sup>	20
Sheep & Goats <sup>03 **</sup>	980
Tractors <sup>02 *</sup>	7
Harvesters&Threshers <sup>02 *</sup>	-
Fertilizers Production <sup>02 ***</sup>	255 300
Fertilizers Consumption <sup>02 ***</sup>	1 050
Rainfall Index <sup>02 (mm)</sup>	36

\* EAP : Economically Active Population

\* 1000ha \*\* 1000heads \*\*\* Tonnes N,P<sub>2</sub>O<sub>5</sub>,K<sub>2</sub>O

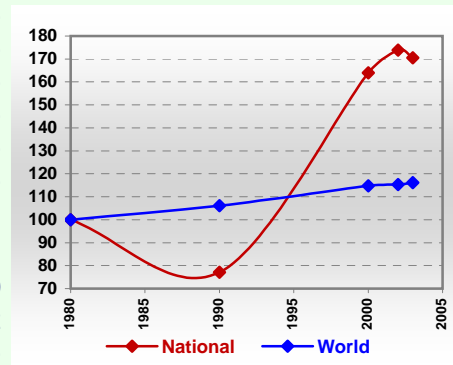
### Resources Distribution



### Production

<b>Agriculture<sup>03 *</sup></b>		
Cereals	3	Pulpwd.,Rnd&Split <sup>**</sup>
Meat	78	Roundwood <sup>**</sup>
Fruits & Vegetables	196	Log:Saw&Veneer <sup>**</sup>
Roots & Tubers	33	Sawnwood <sup>**</sup>
Pulses	-	Wood Charcoal <sup>*</sup>
Oilseeds & Nuts	0	Woodfuel <sup>**</sup>
Sugar Crops	-	Wood Pulp <sup>*</sup>
Tobacco	-	Wood-based Panels <sup>**</sup>
Fibre Crops	-	<b>Fisheries<sup>02 *</sup></b>
		Pelagic
		Freshwater
		Demersal
		Molluscs

### Per Capita Agricultural Production Index



\* 1000Tonnes \*\* 1000m<sup>3</sup>

Time reference= <sup>99-01</sup>:1999-2001, <sup>00</sup>:2000, <sup>02</sup>:2002, <sup>00-02</sup>:2000-2002, <sup>03</sup>:2003, <sup>04</sup>:2004, <sup>ly</sup>:Latest Available Year

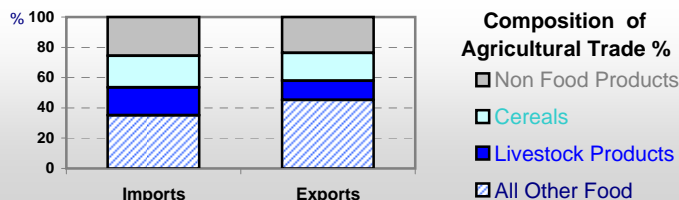


# Country profiles

## Kuwait

### Trade <sup>02</sup>

Agricultural Imports *	811
% 4 Major Imports in Agr.Imp	25
% Agr. Imports in Tot. Imports	9
Fishery Imports *	21
Forestry Imports *	108
Agricultural Exports *	37
% 4 Major Exports in Agr.Exp.	1
% Agr. Exports in Tot.Exports	0
Fishery Exports *	2
Forestry Exports *	13



### Trade Partners & Products

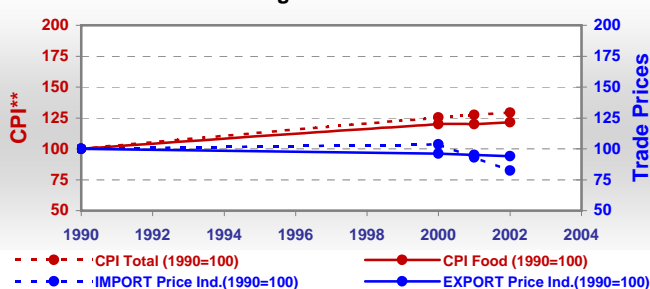
Major Import Partner			
Major Export Partner			
Major Imports	Sheep	Mil Rice	Food Prep
Major Exports	Fruit Juice	Bev Non-Alc	Pastry

\* Million \$

### Prices

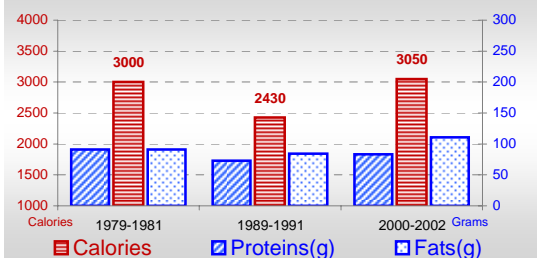
Producer Prices <sup>00-02</sup>	\$*	\$ Green *
Wheat	-	-
Rice	-	-
Maize	-	-
Soybean	-	-
Coffee	-	-
Tobacco	-	-
Cow Milk	-	-
Cattle (Live Weight)	-	-
Pig (Live Weight)	-	-
Chicken (Live Weight)	-	-

### Consumer and Agricultural Trade Price Indices

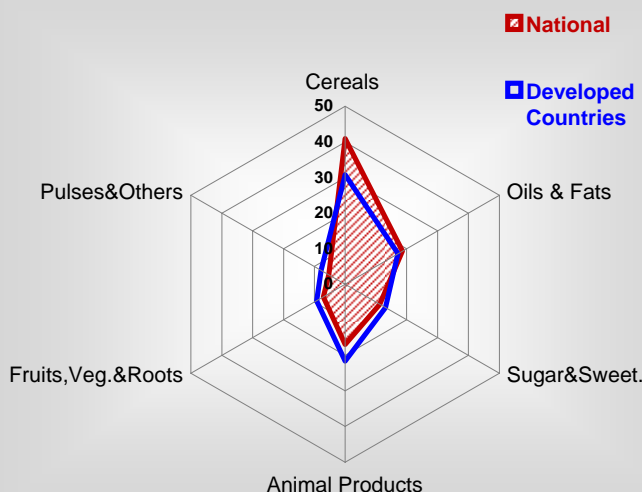


### Consumption

#### Per Capita Daily Consumption



#### Source of Dietary Energy Consumption % <sup>00-02</sup>



#### Per Capita Daily Calorie Intake From Selected Food Items <sup>00-02</sup>

Rice	465
Wheat	691
Maize	90
Sorghum	-
Potatoes	42
Cassava	-
Sugar	334
Soybean Oil	41
Palm Oil	128
Milk	150
Anim.Fats(Raw&Butter)	49
Eggs	38
Pig Meat	-
Poultry Meat	141
Bovine Meat	26
Sheep & Goats Meat	121

#### Food Balance <sup>00-02</sup> (1000Tonnes)

Food Groups	Production (+)	Exports (-)	Imports (+)	Seed, Feed, Other Uses (-)	Consumption (=)
Cereals	4	17	667	322	332
Veg.oils	-	3	58	5	50
Sugar&Sw.	-	3	83	-1	81
Roots&Tub.	27	0	28	1	54
Meat	76	1	76	0	151
Milk	40	5	191	-2	228

Time reference= <sup>99-01</sup>:1999-2001, <sup>00</sup>:2000, <sup>02</sup>:2002, <sup>00-02</sup>:2000-2002, <sup>03</sup>:2003, <sup>04</sup>:2004, <sup>ly</sup>:Latest Available Year