



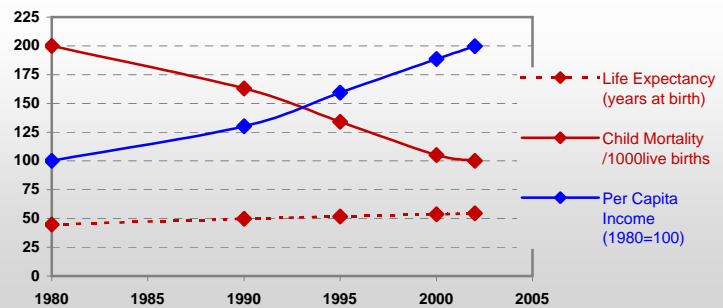
Country profiles

Lao People's Dem. Rep.



General / Welfare

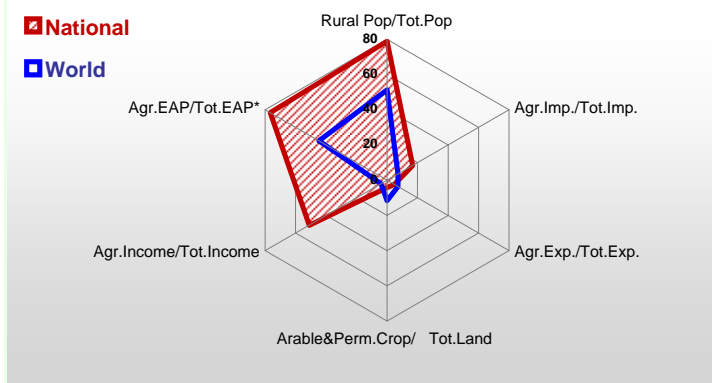
Population ^{04 *}	5 787
Per Capita Income ^{02 **}	477
Per Capita Agricultural Income ^{02**}	318
Total Exports ^{02 ****}	297
Total Imports ^{02 ****}	467
Agric. External Assistance ^{99-01 ***}	147 136
Food Consumption Inequality (G) ^{ly}	0,17
Income Inequality (G) ^{ly}	0,37
Land Inequality (G) ^{ly}	0,39
Undernourished Population % ⁰⁰⁻⁰²	22



*1000 ** \$ *** 1000 \$ **** Million \$ --- (G) : Gini Coefficient --- Income refers to GDP at 1995 Constant Prices

Agriculture In The Economy^{ly}

Resources

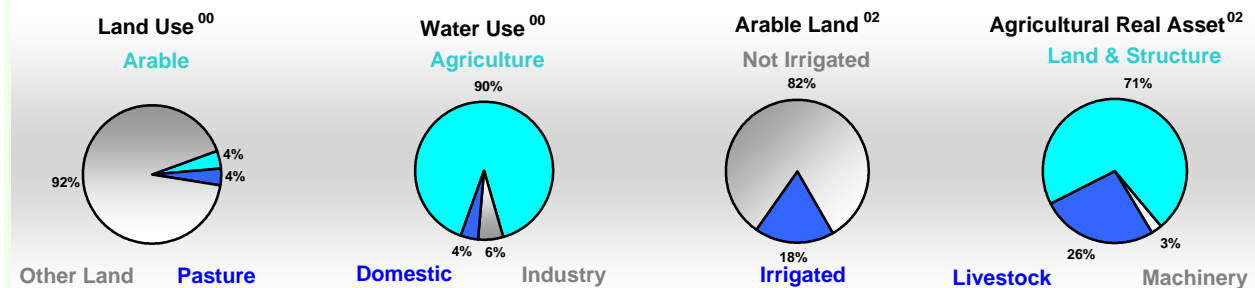


Arable Land ^{00 *}	877
Permanent Crops ^{00 *}	81
Pasture ^{00 *}	878
Cattle & Buffaloes ^{03 **}	2 280
Sheep & Goats ^{03 **}	128
Tractors ^{02 *}	1
Harvesters&Threshers ^{02 *}	-
Fertilizers Production ^{02 ***}	-
Fertilizers Consumption ^{02 ***}	7 019
Rainfall Index ^{02 (mm)}	1 933

* EAP : Economically Active Population

* 1000ha ** 1000heads *** Tonnes N,P₂O₅,K₂O

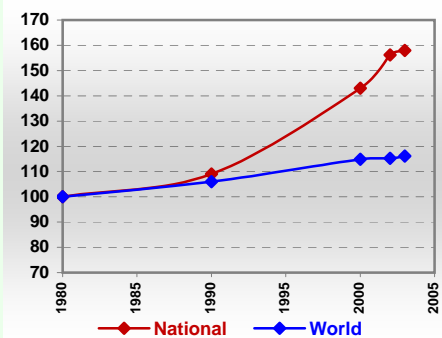
Resources Distribution



Production

Agriculture^{03 *}		
Cereals	2 758	Pulpwd.,Rnd&Split ^{**}
Meat	94	Roundwood ^{**}
Fruits & Vegetables	1 111	Log:Saw&Veneer ^{**}
Roots & Tubers	313	Sawnwood ^{**}
Pulses	17	Wood Charcoal [*]
Oilseeds & Nuts	8	Woodfuel ^{**}
Sugar Crops	225	Wood Pulp [*]
Tobacco	33	Wood-based Panels ^{**}
Fibre Crops	4	
Forestry⁰²		Fisheries^{02 *}
Indust.Roundwood ^{**}	392	Pelagic
Paper, Paperboard [*]	-	Freshwater
		Demersal
		Molluscs

Per Capita Agricultural Production Index



* 1000Tonnes ** 1000m³

Time reference= ⁹⁹⁻⁰¹ :1999-2001, ⁰⁰ :2000, ⁰² :2002, ⁰⁰⁻⁰² :2000-2002, ⁰³ :2003, ⁰⁴ :2004, ^{ly} :Latest Available Year

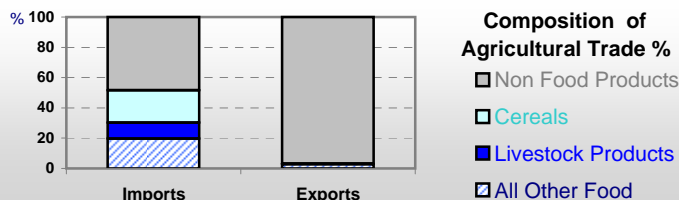


Country profiles

Lao People's Dem. Rep.

Trade ⁰²

Agricultural Imports *	85
% 4 Major Imports in Agr.Imp	13
% Agr. Imports in Tot. Imports	17
Fishery Imports *	2
Forestry Imports *	2
Agricultural Exports *	15
% 4 Major Exports in Agr.Exp.	96
% Agr. Exports in Tot.Exports	5
Fishery Exports *	0
Forestry Exports *	63



Trade Partners & Products

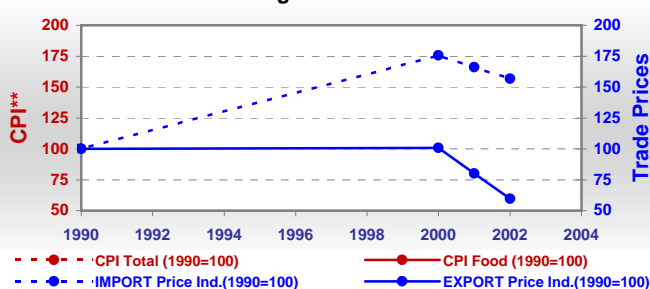
Major Import Partner			
Major Export Partner			
Major Imports	Bev Dis Alc	Bev Non-Alc	Cigarettes
Major Exports	Coffee,Green	Buffaloes	Cattle

* Million \$

Prices

Producer Prices ⁰⁰⁻⁰²	\$*	\$ Green *
Wheat	-	-
Rice	103	99
Maize	78	76
Soybean	323	314
Coffee	375	353
Tobacco	749	724
Cow Milk	472	456
Cattle (Live Weight)	358	346
Pig (Live Weight)	692	669
Chicken (Live Weight)	839	810

Consumer and Agricultural Trade Price Indices

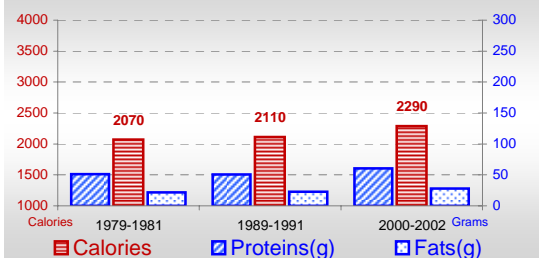


* per Tonne

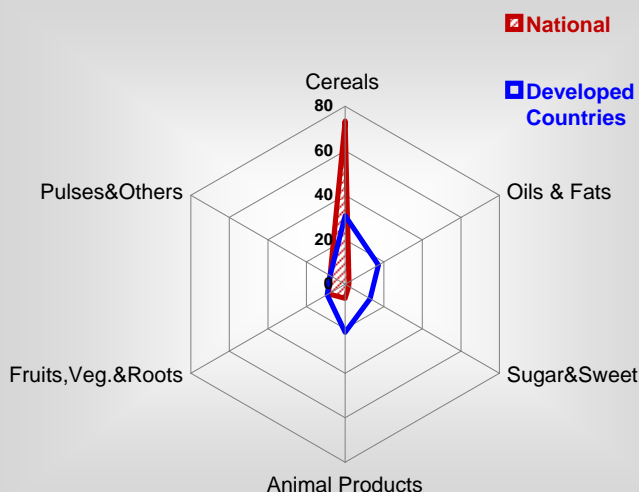
** CPI : Consumer Price Index

Consumption

Per Capita Daily Consumption



Source of Dietary Energy Consumption % ⁰⁰⁻⁰²



Per Capita Daily Calorie Intake From Selected Food Items ⁰⁰⁻⁰²

Rice	1493
Wheat	11
Maize	173
Sorghum	-
Potatoes	9
Cassava	32
Sugar	39
Soybean Oil	1
Palm Oil	-
Milk	12
Anim.Fats(Raw&Butter)	14
Eggs	7
Pig meat	55
Poultry Meat	10
Bovine Meat	27
Sheep & Goats Meat	-

Food Balance ⁰⁰⁻⁰² (1000Tonnes)

Food Groups	Production (+)	Exports (-)	Imports (+)	Seed, Feed, Other Uses (-)	Consumption (=)
Cereals	1 664	2	45	682	1 025
Veg.oils	7	-	-	0	7
Sugar&Sw.	-	-	37	13	24
Roots&Tub.	211	-	7	44	174
Meat	79	-	-	0	79
Milk	6	-	20	1	25

Time reference= ⁹⁹⁻⁰¹:1999-2001, ⁰⁰:2000, ⁰²:2002, ⁰⁰⁻⁰²:2000-2002, ⁰³:2003, ⁰⁴:2004, ^{ly}:Latest Available Year