

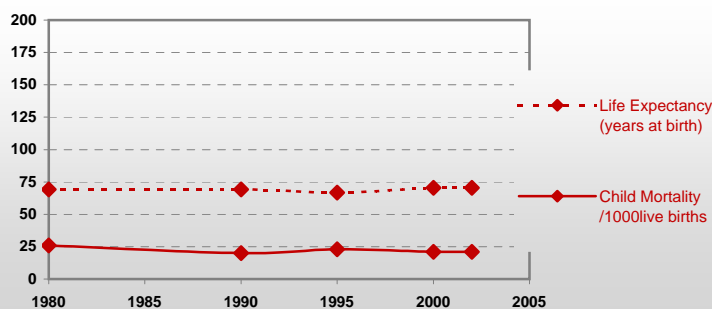


Country profiles

Latvia

General / Welfare

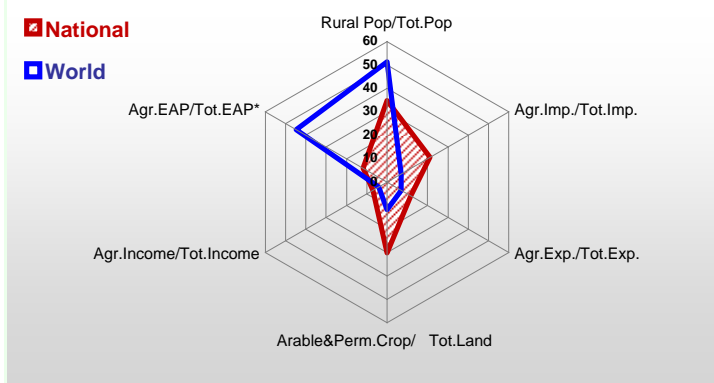
Population ^{04 *}	2 286
Per Capita Income ^{02 **}	3 029
Per Capita Agricultural Income ^{02**}	1 757
Total Exports ^{02 ****}	2 284
Total Imports ^{02 ****}	4 054
Agric. External Assistance ^{99-01 ***}	374
Food Consumption Inequality (G) ^{ly}	0,12
Income Inequality (G) ^{ly}	0,32
Land Inequality (G) ^{ly}	0,58
Undernourished Population % ⁰⁰⁻⁰²	4



* 1000 ** \$ **** Million \$ --- (G): Gini Coefficient --- Income refers to GDP at 1995 Constant Prices

Agriculture In The Economy^{ly}

Resources

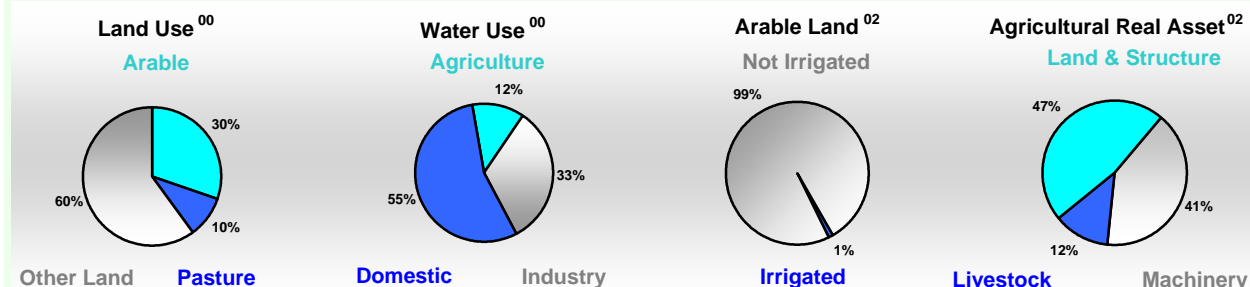


Arable Land ^{00 *}	1 845
Permanent Crops ^{00 *}	29
Pasture ^{00 *}	611
Cattle & Buffaloes ^{03 **}	388
Sheep & Goats ^{03 **}	45
Tractors ^{02 *}	31
Harvesters&Threshers ^{02 *}	3
Fertilizers Production ^{02 ***}	-
Fertilizers Consumption ^{02 ***}	50 029
Rainfall Index ^{02 (mm)}	560

* EAP: Economically Active Population

* 1000ha ** 1000heads *** Tonnes N,P₂O₅,K₂O

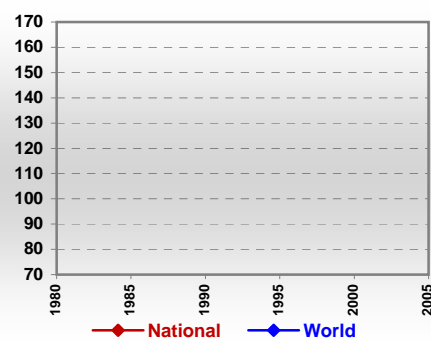
Resources Distribution



Production

Agriculture^{03 *}		Pulpwd.,Rnd&Split ^{**}	1 861
Cereals	942	Roundwood ^{**}	13 467
Meat	71	Log:Saw&Veneer ^{**}	9 861
Fruits & Vegetables	270	Sawnwood ^{**}	3 947
Roots & Tubers	739	Wood Charcoal [*]	13
Pulses	5	Woodfuel ^{**}	1 198
Oilseeds & Nuts	15	Wood Pulp [*]	-
Sugar Crops	532	Wood-based Panels ^{**}	318
Tobacco	-	Fisheries^{02 *}	
Fibre Crops	1	Pelagic	103
Forestry⁰²		Freshwater	1
Indust.Roundwood ^{**}	12 269	Demersal	8
Paper, Paperboard [*]	24	Molluscs	-

Per Capita Agricultural Production Index



* 1000Tonnes ** 1000m³

Time reference= ⁹⁹⁻⁰¹:1999-2001, ⁰⁰:2000, ⁰²:2002, ⁰⁰⁻⁰²:2000-2002, ⁰³:2003, ⁰⁴:2004, ^{ly}:Latest Available Year

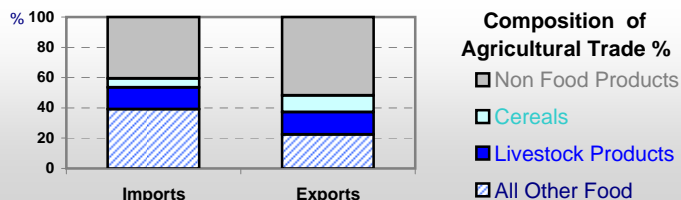


Country profiles

Latvia

Trade ⁰²

Agricultural Imports *	853
% 4 Major Imports in Agr.Imp	17
% Agr. Imports in Tot. Imports	21
Fishery Imports *	48
Forestry Imports *	128
Agricultural Exports *	265
% 4 Major Exports in Agr.Exp.	33
% Agr. Exports in Tot.Exports	12
Fishery Exports *	123
Forestry Exports *	647



Trade Partners & Products

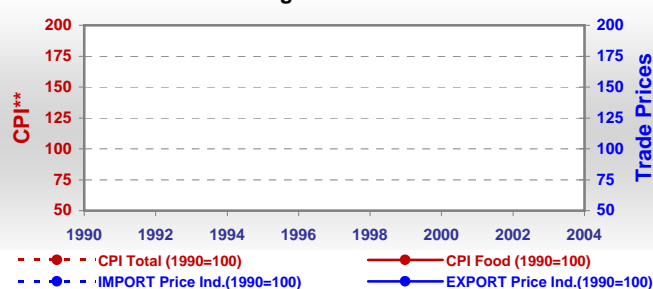
Major Import Partner	Lithuania	Germany	Estonia
Major Export Partner	USA	Lithuania	Estonia
Major Imports	Food Prep	Cigarettes	Bev Dis Alc
Major Exports	Cigarettes	Bev Dis Alc	Wheat

* Million \$

Prices

Producer Prices ⁰⁰⁻⁰²	\$*	\$ Green *
Wheat	97	126
Rice	-	-
Maize	-	-
Soybean	183	239
Coffee	-	-
Tobacco	-	-
Cow Milk	152	199
Cattle (Live Weight)	690	902
Pig (Live Weight)	1 208	1 578
Chicken (Live Weight)	1 180	1 540

Consumer and Agricultural Trade Price Indices

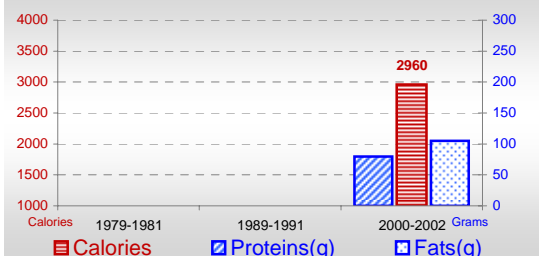


* per Tonne

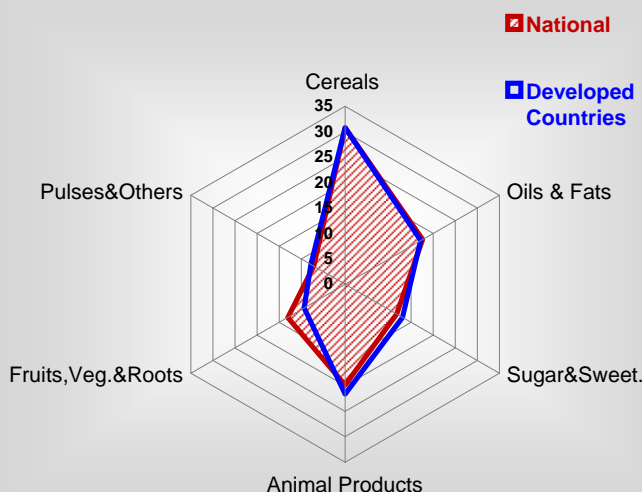
** CPI : Consumer Price Index

Consumption

Per Capita Daily Consumption



Source of Dietary Energy Consumption % ⁰⁰⁻⁰²



Per Capita Daily Calorie Intake From Selected Food Items ⁰⁰⁻⁰²

Rice	28
Wheat	596
Maize	2
Sorghum	-
Potatoes	252
Cassava	-
Sugar	308
Soybean Oil	66
Palm Oil	-
Milk	322
Anim.Fats(Raw&Butter)	171
Eggs	42
Pig Meat	92
Poultry Meat	43
Bovine Meat	54
Sheep & Goats Meat	1

Food Balance ^{00-02 (1000Tonnes)}

Food Groups	Production (+)	Exports (-)	Imports (+)	Seed, Feed, Other Uses (-)	Consumption (=)
Cereals	975	81	95	710	279
Veg.oils	6	1	51	26	30
Sugar&Sw.	74	10	24	0	88
Roots&Tub.	710	31	31	388	323
Meat	62	2	37	1	96
Milk	829	168	139	299	501

Time reference= ⁹⁹⁻⁰¹:1999-2001, ⁰⁰:2000, ⁰²:2002, ⁰⁰⁻⁰²:2000-2002, ⁰³:2003, ⁰⁴:2004, ^{ly}:Latest Available Year