



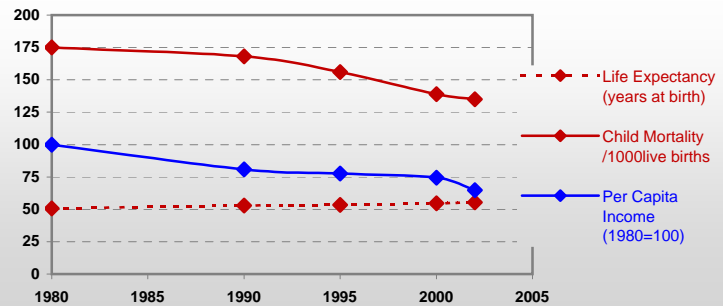
Country profiles

Madagascar



General / Welfare

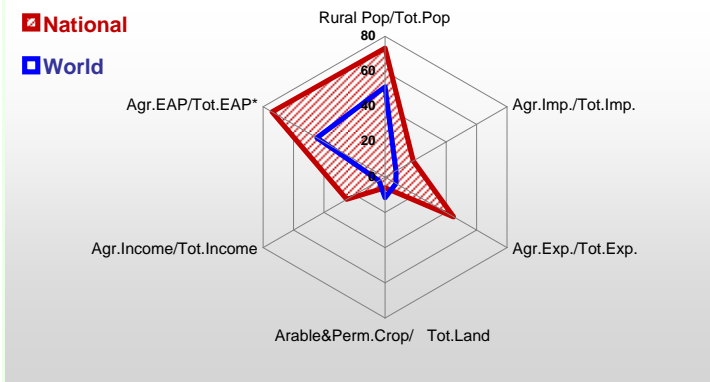
Population ^{04 *}	17 901
Per Capita Income ^{02 **}	215
Per Capita Agricultural Income ^{02**}	72
Total Exports ^{02 ****}	414
Total Imports ^{02 ****}	506
Agric. External Assistance ^{99-01 ***}	278 885
Food Consumption Inequality (G) ^{ly}	0,16
Income Inequality (G) ^{ly}	0,48
Land Inequality (G) ^{ly}	-
Undernourished Population % ⁰⁰⁻⁰²	37



*1000 ** \$ *** 1000 \$ **** Million \$ --- (G) : Gini Coefficient --- Income refers to GDP at 1995 Constant Prices

Agriculture In The Economy^{ly}

Resources

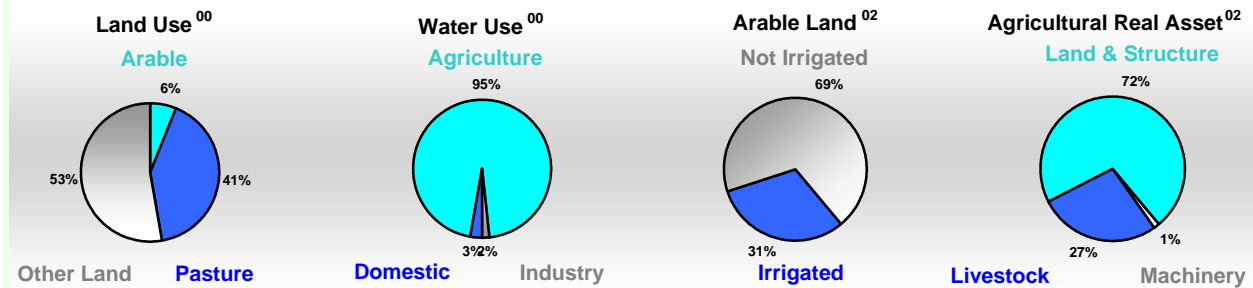


Arable Land ^{00 *}	2 900
Permanent Crops ^{00 *}	600
Pasture ^{00 *}	24 000
Cattle & Buffaloes ^{03 **}	10 500
Sheep & Goats ^{03 **}	1 850
Tractors ^{02 *}	1
Harvesters&Threshers ^{02 *}	0
Fertilizers Production ^{02 ***}	-
Fertilizers Consumption ^{02 ***}	9 125
Rainfall Index ^{02 (mm)}	1 696

* EAP : Economically Active Population

* 1000ha ** 1000heads *** Tonnes N,P₂O₅,K₂O

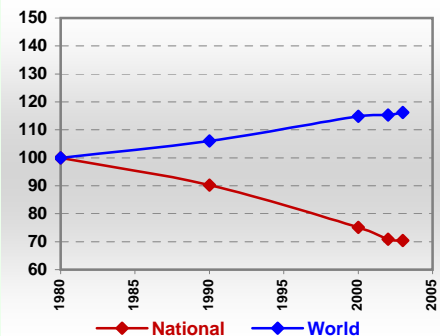
Resources Distribution



Production

Agriculture^{03 *}			
Cereals	2 992	Pulpwd.,Rnd&Split ^{**}	23
Meat	297	Roundwood ^{**}	10 299
Fruits & Vegetables	1 234	Log:Saw&Veneer ^{**}	74
Roots & Tubers	3 374	Sawnwood ^{**}	95
Pulses	90	Wood Charcoal [*]	795
Oilseeds & Nuts	35	Woodfuel ^{**}	10 202
Sugar Crops	2 236	Wood Pulp [*]	1
Tobacco	1	Wood-based Panels ^{**}	5
Fibre Crops	37	Fisheries^{02 *}	
Forestry⁰²		Pelagic	12
Indust.Roundwood ^{**}	97	Freshwater	32
Paper, Paperboard [*]	3	Demersal	-
		Molluscs	0

Per Capita Agricultural Production Index



* 1000Tonnes ** 1000m³

Time reference= ⁹⁹⁻⁰¹ :1999-2001, ⁰⁰ :2000, ⁰² :2002, ⁰⁰⁻⁰² :2000-2002, ⁰³ :2003, ⁰⁴ :2004, ^{ly} :Latest Available Year



Country profiles

Madagascar

Trade ⁰²

Agricultural Imports *	71
% 4 Major Imports in Agr.Imp	23
% Agr. Imports in Tot. Imports	18
Fishery Imports *	14
Forestry Imports *	6
Agricultural Exports *	186
% 4 Major Exports in Agr.Exp.	84
% Agr. Exports in Tot.Exports	45
Fishery Exports *	156
Forestry Exports *	16



Trade Partners & Products

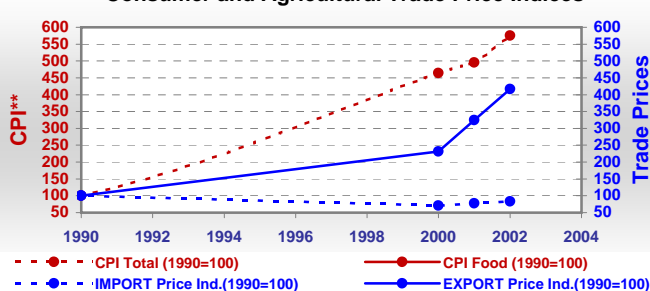
Major Import Partner	India	France	Mauritius
Major Export Partner	France	Singapore	USA
Major Imports	Oil Soyabean	Mil Rice	Oilseeds nes
Major Exports	Vanilla	Cloves	Fruit Pr nes

* Million \$

Prices

Producer Prices ⁰⁰⁻⁰²	\$*	\$ Green *
Wheat	165	173
Rice	170	178
Maize	139	146
Soybean	-	-
Coffee	302	316
Tobacco	694	727
Cow Milk	272	285
Cattle (Live Weight)	804	843
Pig (Live Weight)	1 109	1 163
Chicken (Live Weight)	967	1 013

Consumer and Agricultural Trade Price Indices

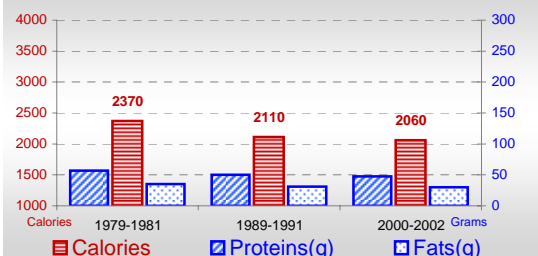


* per Tonne

** CPI : Consumer Price Index

Consumption

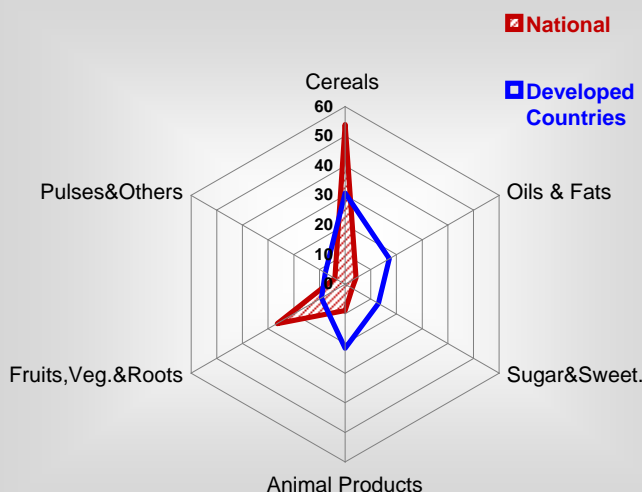
Per Capita Daily Consumption



Per Capita Daily Calorie Intake From Selected Food Items ⁰⁰⁻⁰²

Rice	985
Wheat	45
Maize	79
Sorghum	-
Potatoes	20
Cassava	385
Sugar	52
Soybean Oil	47
Palm Oil	4
Milk	55
Anim.Fats(Raw&Butter)	11
Eggs	3
Pig Meat	35
Poultry Meat	20
Bovine Meat	44
Sheep & Goats Meat	2

Source of Dietary Energy Consumption % ⁰⁰⁻⁰²



Food Balance ⁰⁰⁻⁰² (1000Tonnes)

Food Groups	Production (+)	Exports (-)	Imports (+)	Seed, Feed, Other Uses (-)	Consumption (=)
Cereals	1 907	3	256	299	1 861
Veg.oils	20	-	38	6	52
Sugar&Sw.	70	1	30	-9	108
Roots&Tub.	3 446	0	1	585	2 862
Meat	294	-	-	0	294
Milk	535	-	22	28	529

Time reference= ⁹⁹⁻⁰¹:1999-2001, ⁰⁰:2000, ⁰²:2002, ⁰⁰⁻⁰²:2000-2002, ⁰³:2003, ⁰⁴:2004, ^{ly}:Latest Available Year