



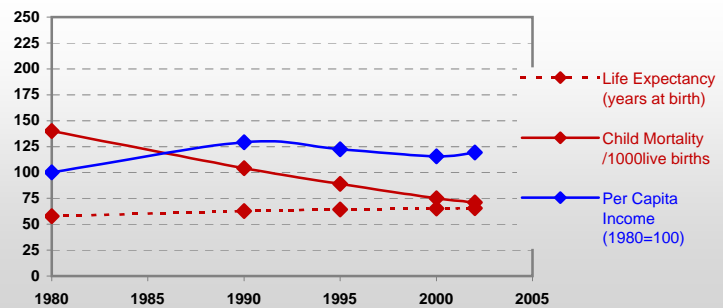
Country profiles

Mongolia



General / Welfare

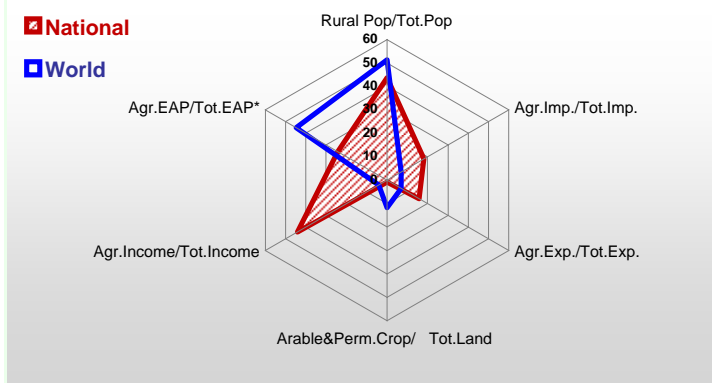
Population ^{04 *}	2 630
Per Capita Income ^{02 **}	442
Per Capita Agricultural Income ^{02**}	814
Total Exports ^{02 ****}	524
Total Imports ^{02 ****}	691
Agric. External Assistance ^{99-01 ***}	61 861
Food Consumption Inequality (G) ^{ly}	0,15
Income Inequality (G) ^{ly}	0,44
Land Inequality (G) ^{ly}	-
Undernourished Population % ⁰⁰⁻⁰²	28



*1000 ** \$ *** 1000 \$ **** Million \$ --- (G) : Gini Coefficient --- Income refers to GDP at 1995 Constant Prices

Agriculture In The Economy^{ly}

Resources

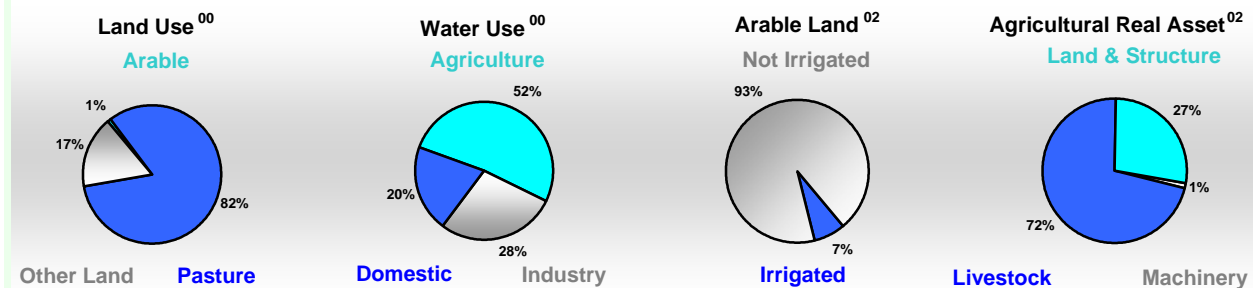


Arable Land ^{00 *}	1 174
Permanent Crops ^{00 *}	2
Pasture ^{00 *}	129 294
Cattle & Buffaloes ^{03 **}	2 054
Sheep & Goats ^{03 **}	20 655
Tractors ^{02 *}	4
Harvesters&Threshers ^{02 *}	1
Fertilizers Production ^{02 ***}	-
Fertilizers Consumption ^{02 ***}	4 448
Rainfall Index ^{02 (mm)}	156

* EAP : Economically Active Population

* 1000ha ** 1000heads *** Tonnes N,P₂O₅,K₂O

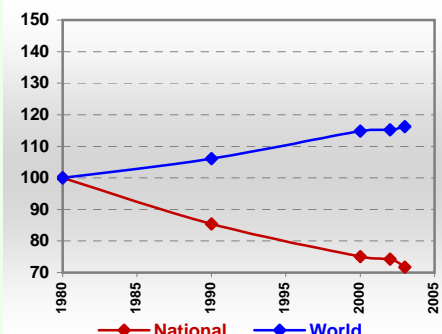
Resources Distribution



Production

Agriculture^{03 *}		
Cereals	184	Pulpwd.,Rnd&Split ^{**}
Meat	260	Roundwood ^{**}
Fruits & Vegetables	45	Log:Saw&Veneer ^{**}
Roots & Tubers	68	Sawnwood ^{**}
Pulses	1	Wood Charcoal [*]
Oilseeds & Nuts	4	Woodfuel ^{**}
Sugar Crops	-	Wood Pulp [*]
Tobacco	-	Wood-based Panels ^{**}
Fibre Crops	-	
Forestry⁰²		Fisheries^{02 *}
Indust.Roundwood ^{**}	445	Pelagic
Paper, Paperboard [*]	-	Freshwater
		Demersal
		Molluscs

Per Capita Agricultural Production Index



* 1000Tonnes ** 1000m³

Time reference= ⁹⁹⁻⁰¹ :1999-2001, ⁰⁰ :2000, ⁰² :2002, ⁰⁰⁻⁰² :2000-2002, ⁰³ :2003, ⁰⁴ :2004, ^{ly} :Latest Available Year



Country profiles

Mongolia

Trade ⁰²

Agricultural Imports *	125
% 4 Major Imports in Agr.Imp	37
% Agr. Imports in Tot. Imports	18
Fishery Imports *	1
Forestry Imports *	3
Agricultural Exports *	82
% 4 Major Exports in Agr.Exp.	19
% Agr. Exports in Tot.Exports	16
Fishery Exports *	0
Forestry Exports *	1



Trade Partners & Products

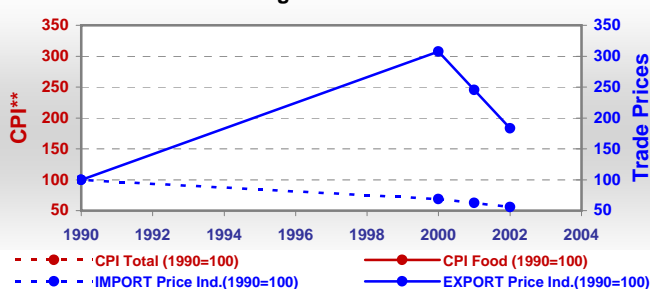
Major Import Partner	Mongolia	China	Morocco
Major Export Partner	China	Russian Fed	Italy
Major Imports	Wheat	Flour Wheat	Beer Barley
Major Exports	Hair Carded	Beef Veal	Hide W Cattle

* Million \$

Prices

Producer Prices ⁰⁰⁻⁰²	\$*	\$ Green *
Wheat	-	-
Rice	-	-
Maize	-	-
Soybean	-	-
Coffee	-	-
Tobacco	-	-
Cow Milk	-	-
Cattle (Live Weight)	-	-
Pig (Live Weight)	-	-
Chicken (Live Weight)	-	-

Consumer and Agricultural Trade Price Indices

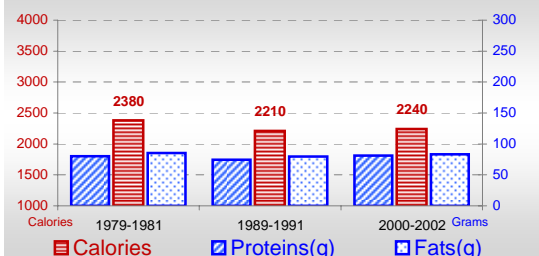


* per Tonne

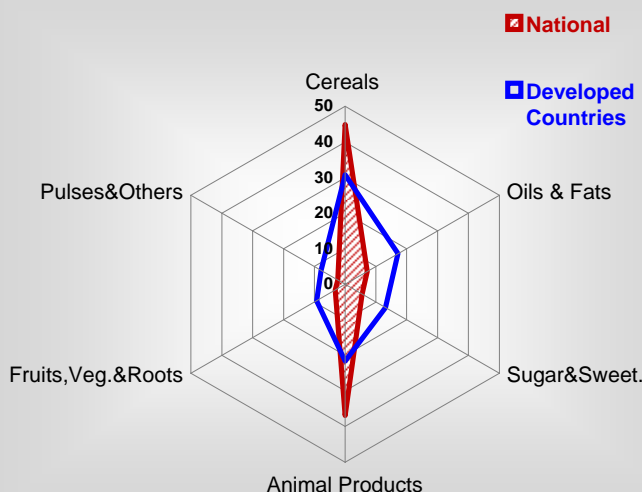
** CPI : Consumer Price Index

Consumption

Per Capita Daily Consumption



Source of Dietary Energy Consumption % ⁰⁰⁻⁰²



Per Capita Daily Calorie Intake From Selected Food Items ⁰⁰⁻⁰²

Rice	62
Wheat	924
Maize	1
Sorghum	-
Potatoes	47
Cassava	2
Sugar	119
Soybean Oil	44
Palm Oil	2
Milk	212
Anim.Fats(Raw&Butter)	70
Eggs	2
Pig Meat	2
Poultry Meat	-
Bovine Meat	169
Sheep & Goats Meat	339

Food Balance ^{00-02 (1000Tonnes)}

Food Groups	Production (+)	Exports (-)	Imports (+)	Seed, Feed, Other Uses (-)	Consumption (=)
Cereals	146	-	265	85	326
Veg.oils	-	-	12	2	10
Sugar&Sw.	-	-	31	0	31
Roots&Tub.	61	-	26	24	63
Meat	279	20	-	0	259
Milk	343	-	9	48	304

Time reference= ⁹⁹⁻⁰¹:1999-2001, ⁰⁰:2000, ⁰²:2002, ⁰⁰⁻⁰²:2000-2002, ⁰³:2003, ⁰⁴:2004, ^{ly}:Latest Available Year