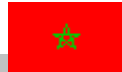




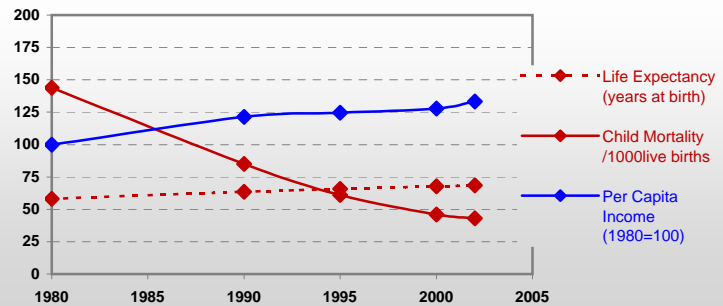
# Country profiles

## Morocco



### General / Welfare

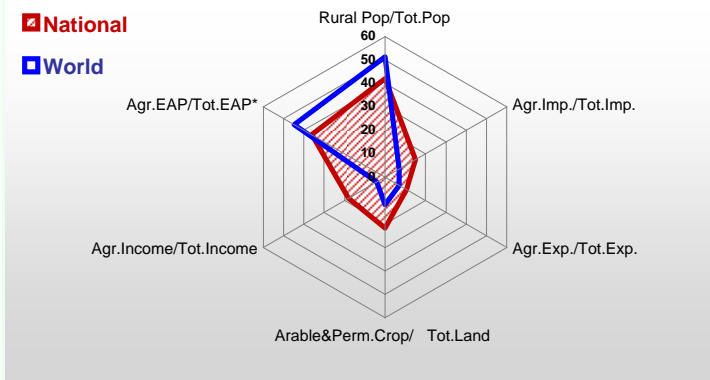
Population <sup>04 *</sup>	31 064
Per Capita Income <sup>02 **</sup>	1 455
Per Capita Agricultural Income <sup>02**</sup>	726
Total Exports <sup>02 ****</sup>	7 854
Total Imports <sup>02 ****</sup>	11 855
Agric. External Assistance <sup>99-01 ***</sup>	231 062
Food Consumption Inequality (G) <sup>ly</sup>	0,17
Income Inequality (G) <sup>ly</sup>	0,40
Land Inequality (G) <sup>ly</sup>	0,62
Undernourished Population % <sup>00-02</sup>	7



\*1000 \*\* \$ \*\*\* 1000 \$ \*\*\*\* Million \$ --- (G) : Gini Coefficient --- Income refers to GDP at 1995 Constant Prices

### Agriculture In The Economy<sup>ly</sup>

### Resources

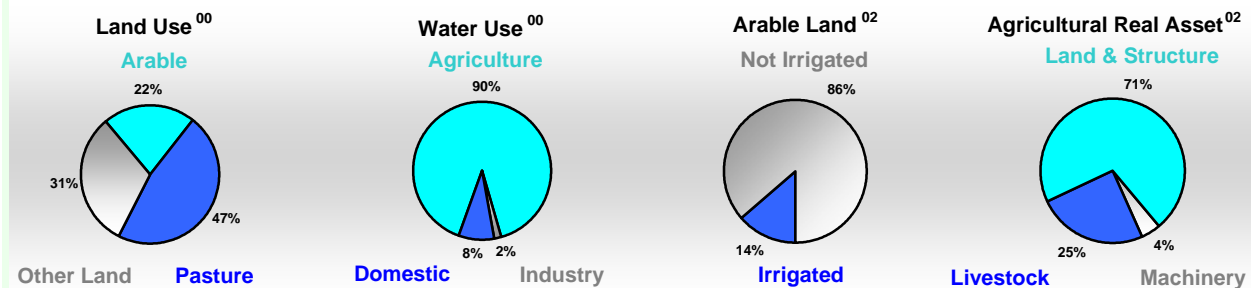


Arable Land <sup>00 *</sup>	8 767
Permanent Crops <sup>00 *</sup>	885
Pasture <sup>00 *</sup>	21 000
Cattle & Buffaloes <sup>03 **</sup>	2 689
Sheep & Goats <sup>03 **</sup>	21 951
Tractors <sup>02 *</sup>	6
Harvesters&Threshers <sup>02 *</sup>	0
Fertilizers Production <sup>02 ***</sup>	1 569 500
Fertilizers Consumption <sup>02 ***</sup>	399 000
Rainfall Index <sup>02 (mm)</sup>	340

\* EAP : Economically Active Population

\* 1000ha \*\* 1000heads \*\*\* Tonnes N,P<sub>2</sub>O<sub>5</sub>,K<sub>2</sub>O

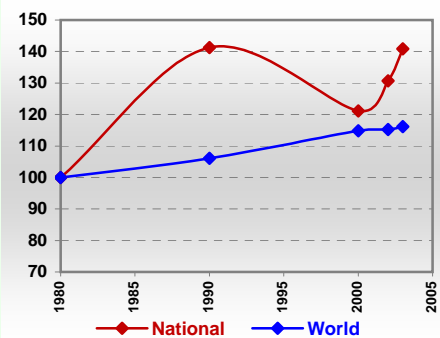
### Resources Distribution



### Production

Agriculture <sup>03 *</sup>		Pulpwd.,Rnd&Split <sup>**</sup>	
Cereals	7 972	Roundwood <sup>**</sup>	926
Meat	588	Log:Saw&Veneer <sup>**</sup>	253
Fruits & Vegetables	6 700	Sawnwood <sup>**</sup>	83
Roots & Tubers	1 445	Wood Charcoal <sup>*</sup>	94
Pulses	252	Woodfuel <sup>**</sup>	400
Oilseeds & Nuts	209	Wood Pulp <sup>*</sup>	177
Sugar Crops	4 376	Wood-based Panels <sup>**</sup>	35
Tobacco	4	<b>Fisheries<sup>02 *</sup></b>	
Fibre Crops	3	Pelagic	756
<b>Forestry<sup>02</sup></b>		Freshwater	3
Indust.Roundwood <sup>**</sup>	526	Demersal	61
Paper, Paperboard <sup>*</sup>	129	Molluscs	1

### Per Capita Agricultural Production Index



\* 1000Tonnes \*\* 1000m<sup>3</sup>

Time reference= <sup>99-01</sup> :1999-2001, <sup>00</sup> :2000, <sup>02</sup> :2002, <sup>00-02</sup> :2000-2002, <sup>03</sup> :2003, <sup>04</sup> :2004, <sup>ly</sup> :Latest Available Year



# Country profiles

## Morocco

### Trade <sup>02</sup>

Agricultural Imports *	1 740
% 4 Major Imports in Agr.Imp	50
% Agr. Imports in Tot. Imports	15
Fishery Imports *	13
Forestry Imports *	396
Agricultural Exports *	810
% 4 Major Exports in Agr.Exp.	46
% Agr. Exports in Tot.Exports	10
Fishery Exports *	940
Forestry Exports *	88



### Trade Partners & Products

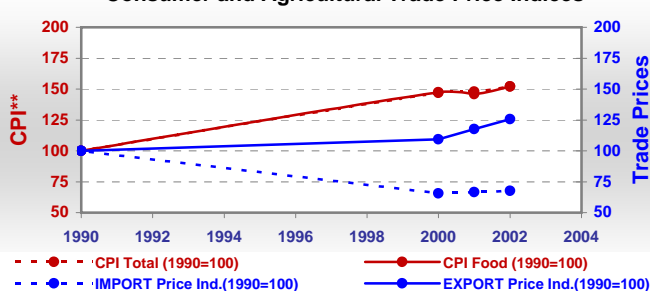
Major Import Partner	Brazil	France	USA
Major Export Partner	France	Russian Fed	Spain
Major Imports	Wheat	Oil Soyabean	Sugar,C. Raw
Major Exports	Tangerines	Tomatoes	Oranges

\* Million \$

### Prices

Producer Prices <sup>00-02</sup>	\$*	\$ Green *
Wheat	230	184
Rice	263	211
Maize	203	162
Soybean	261	209
Coffee	-	-
Tobacco	1 093	875
Cow Milk	282	226
Cattle (Live Weight)	2 157	1 725
Pig (Live Weight)	3 580	2 863
Chicken (Live Weight)	736	590

### Consumer and Agricultural Trade Price Indices

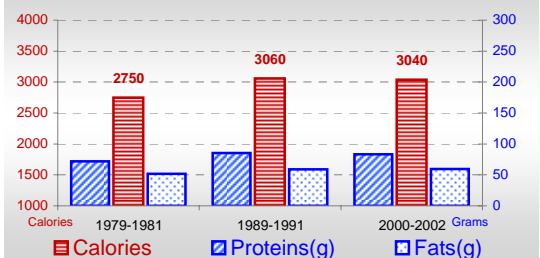


\* per Tonne

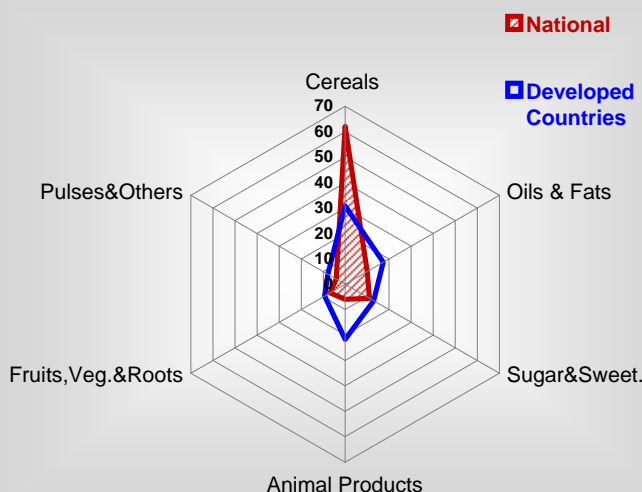
\*\* CPI : Consumer Price Index

### Consumption

#### Per Capita Daily Consumption



#### Source of Dietary Energy Consumption % <sup>00-02</sup>



#### Per Capita Daily Calorie Intake From Selected Food Items <sup>00-02</sup>

Rice	7
Wheat	1348
Maize	254
Sorghum	2
Potatoes	59
Cassava	-
Sugar	337
Soybean Oil	150
Palm Oil	-
Milk	46
Anim.Fats(Raw&Butter)	45
Eggs	23
Pig Meat	-
Poultry Meat	30
Bovine Meat	28
Sheep & Goats Meat	26

#### Food Balance <sup>00-02</sup> (1000Tonnes)

Food Groups	Production (+)	Exports (-)	Imports (+)	Seed, Feed, Other Uses (-)	Consumption (=)
Cereals	3 955	137	5 154	1 621	7 351
Veg.oils	132	7	381	188	318
Sugar&Sw.	523	17	558	37	1 027
Roots&Tub.	1 142	47	63	243	915
Meat	596	8	3	-8	599
Milk	1 282	55	194	319	1 102

Time reference= <sup>99-01</sup>:1999-2001, <sup>00</sup>:2000, <sup>02</sup>:2002, <sup>00-02</sup>:2000-2002, <sup>03</sup>:2003, <sup>04</sup>:2004, <sup>ly</sup>:Latest Available Year