



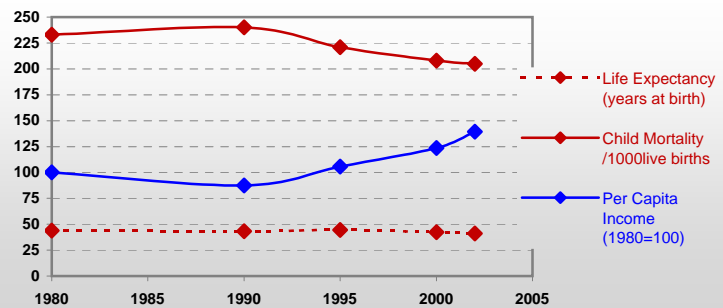
Country profiles

Mozambique



General / Welfare

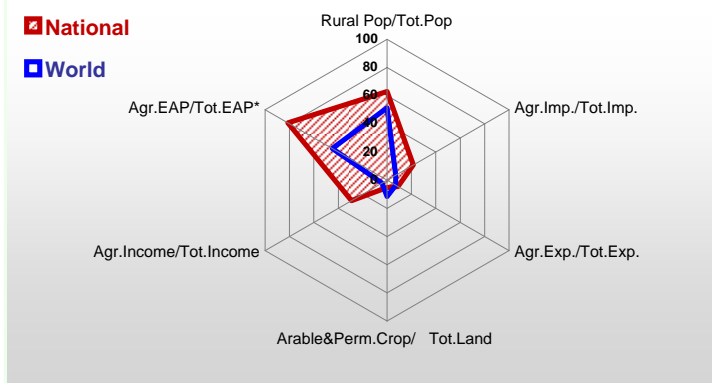
Population ^{04 *}	19 182
Per Capita Income ^{02 **}	223
Per Capita Agricultural Income ^{02**}	85
Total Exports ^{02 ****}	850
Total Imports ^{02 ****}	1 523
Agric. External Assistance ^{99-01 ***}	379 957
Food Consumption Inequality (G) ^{ly}	0,17
Income Inequality (G) ^{ly}	0,40
Land Inequality (G) ^{ly}	-
Undernourished Population % ⁰⁰⁻⁰²	47



*1000 ** \$ *** 1000 \$ **** Million \$ --- (G): Gini Coefficient --- Income refers to GDP at 1995 Constant Prices

Agriculture In The Economy^{ly}

Resources

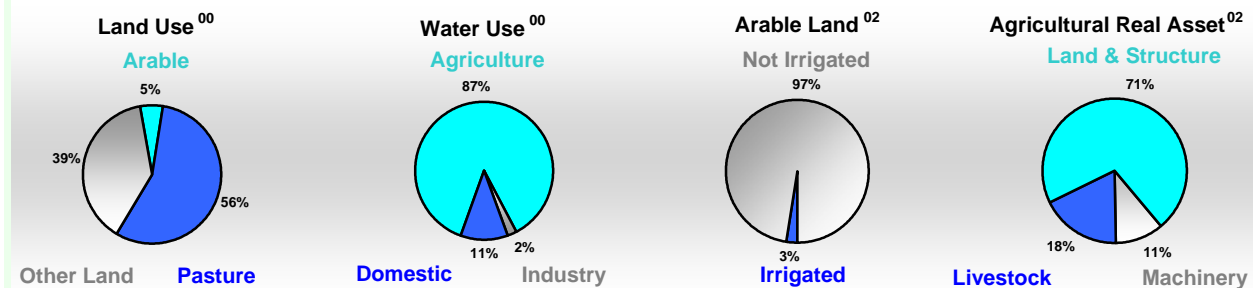


Arable Land ^{00 *}	3 900
Permanent Crops ^{00 *}	235
Pasture ^{00 *}	44 000
Cattle & Buffaloes ^{03 **}	1 320
Sheep & Goats ^{03 **}	517
Tractors ^{02 *}	1
Harvesters&Threshers ^{02 *}	-
Fertilizers Production ^{02 ***}	-
Fertilizers Consumption ^{02 ***}	24 900
Rainfall Index ^{02 (mm)}	917

* EAP: Economically Active Population

* 1000ha ** 1000heads *** Tonnes N,P₂O₅,K₂O

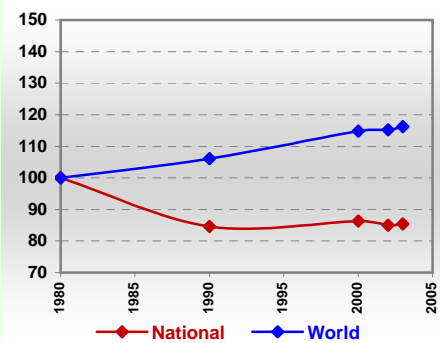
Resources Distribution



Production

Agriculture^{03 *}		
Cereals	1 811	Pulpwd.,Rnd&Split ^{**}
Meat	94	Roundwood ^{**}
Fruits & Vegetables	408	Log:Saw&Veneer ^{**}
Roots & Tubers	6 302	Sawnwood ^{**}
Pulses	205	Wood Charcoal [*]
Oilseeds & Nuts	144	Woodfuel ^{**}
Sugar Crops	400	Wood Pulp [*]
Tobacco	10	Wood-based Panels ^{**}
Fibre Crops	29	
Forestry⁰²		Fisheries^{02 *}
Indust.Roundwood ^{**}	1 319	Pelagic
Paper, Paperboard [*]	-	Freshwater
		Demersal
		Molluscs

Per Capita Agricultural Production Index



* 1000Tonnes ** 1000m³

Time reference= ⁹⁹⁻⁰¹:1999-2001, ⁰⁰:2000, ⁰²:2002, ⁰⁰⁻⁰²:2000-2002, ⁰³:2003, ⁰⁴:2004, ^{ly}:Latest Available Year



Country profiles

Mozambique

Trade ⁰²

Agricultural Imports *	330
% 4 Major Imports in Agr.Imp	34
% Agr. Imports in Tot. Imports	22
Fishery Imports *	8
Forestry Imports *	1
Agricultural Exports *	76
% 4 Major Exports in Agr.Exp.	35
% Agr. Exports in Tot.Exports	9
Fishery Exports *	98
Forestry Exports *	7



Trade Partners & Products

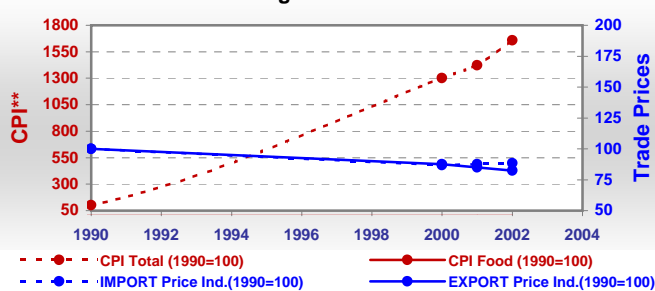
Major Import Partner			
Major Export Partner			
Major Imports	Maize	Sugar Refind	Wheat
Major Exports	Tobacco	Cashew Nuts	Cotton Lint

* Million \$

Prices

Producer Prices ⁰⁰⁻⁰²	\$*	\$ Green *
Wheat	173	199
Rice	166	191
Maize	97	110
Soybean	-	-
Coffee	277	312
Tobacco	888	1 023
Cow Milk	421	474
Cattle (Live Weight)	1 365	1 534
Pig (Live Weight)	1 484	1 702
Chicken (Live Weight)	1 760	1 983

Consumer and Agricultural Trade Price Indices

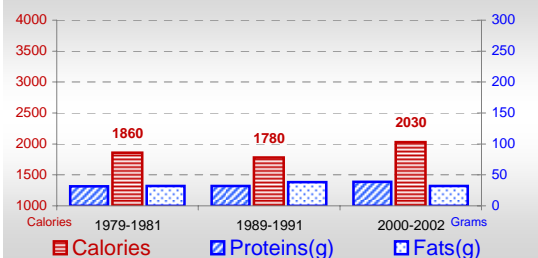


* per Tonne

** CPI : Consumer Price Index

Consumption

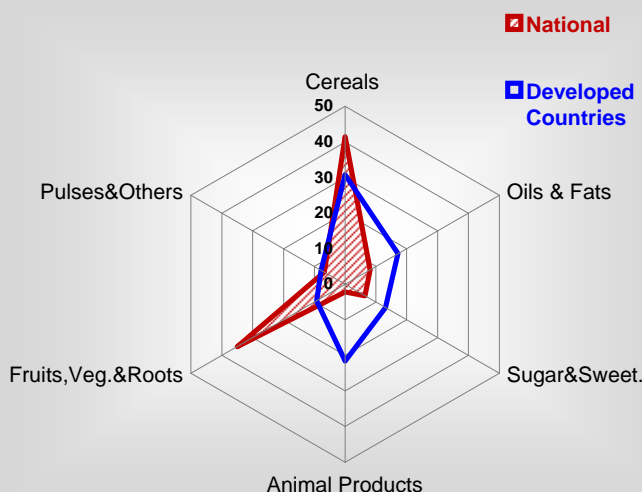
Per Capita Daily Consumption



Per Capita Daily Calorie Intake From Selected Food Items ⁰⁰⁻⁰²

Rice	89
Wheat	130
Maize	482
Sorghum	120
Potatoes	8
Cassava	671
Sugar	133
Soybean Oil	15
Palm Oil	32
Milk	8
Anim.Fats(Raw&Butter)	3
Eggs	2
Pig Meat	7
Poultry Meat	8
Bovine Meat	11
Sheep & Goats Meat	1

Source of Dietary Energy Consumption % ⁰⁰⁻⁰²



Food Balance ⁰⁰⁻⁰² (1000Tonnes)

Food Groups	Production (+)	Exports (-)	Imports (+)	Seed, Feed, Other Uses (-)	Consumption (=)
Cereals	1 572	2	573	262	1 881
Veg.oils	78	8	53	2	121
Sugar&Sw.	37	32	205	-39	249
Roots&Tub.	5 910	0	8	1 687	4 230
Meat	92	-	7	1	98
Milk	69	-	28	4	93

Time reference= ⁹⁹⁻⁰¹:1999-2001, ⁰⁰:2000, ⁰²:2002, ⁰⁰⁻⁰²:2000-2002, ⁰³:2003, ⁰⁴:2004, ^{ly}:Latest Available Year