



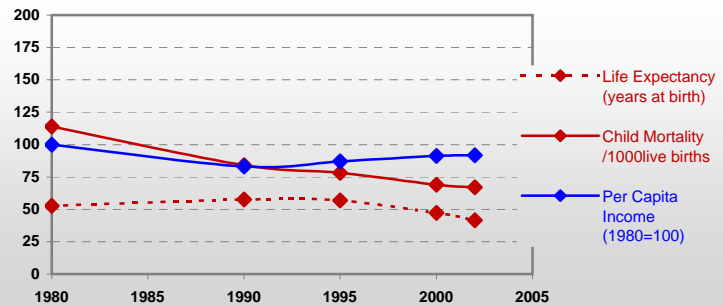
Country profiles

Namibia



General / Welfare

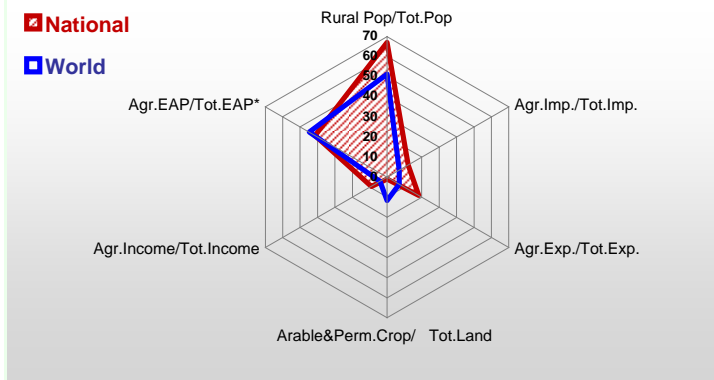
Population ^{04 *}	2 011
Per Capita Income ^{02 **}	2 203
Per Capita Agricultural Income ^{02**}	433
Total Exports ^{02 ****}	1 072
Total Imports ^{02 ****}	1 283
Agric. External Assistance ^{99-01 ***}	58 548
Food Consumption Inequality (G) ^{ly}	0,14
Income Inequality (G) ^{ly}	0,71
Land Inequality (G) ^{ly}	0,36
Undernourished Population % ⁰⁰⁻⁰²	22



* 1000 ** \$ *** 1000 \$ **** Million \$ --- (G): Gini Coefficient --- Income refers to GDP at 1995 Constant Prices

Agriculture In The Economy^{ly}

Resources

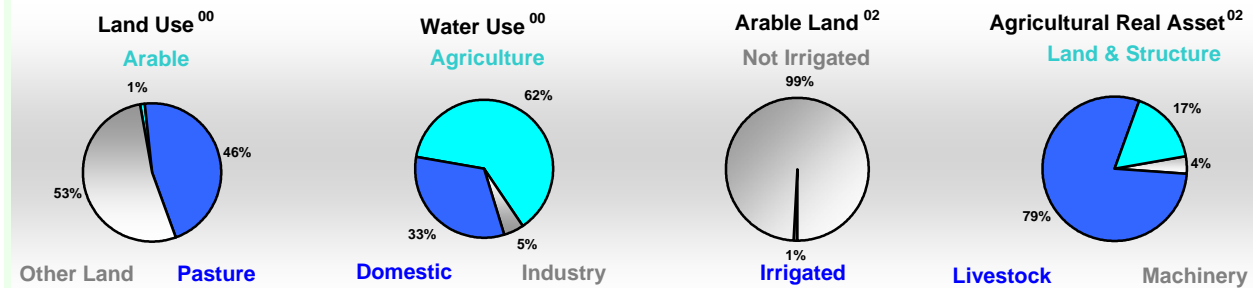


Arable Land ^{00 *}	816
Permanent Crops ^{00 *}	4
Pasture ^{00 *}	38 000
Cattle & Buffaloes ^{03 **}	2 509
Sheep & Goats ^{03 **}	4 150
Tractors ^{02 *}	4
Harvesters&Threshers ^{02 *}	-
Fertilizers Production ^{02 ***}	-
Fertilizers Consumption ^{02 ***}	300
Rainfall Index ^{02 (mm)}	339

* EAP: Economically Active Population ---

* 1000ha ** 1000heads *** Tonnes N,P₂O₅,K₂O

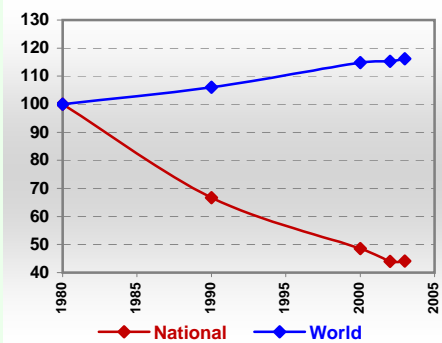
Resources Distribution



Production

Agriculture ^{03 *}		Forestry ⁰²		Fisheries ^{02 *}	
Cereals	97	Indust.Roundwood **	-	Pelagic	422
Meat	83	Paper, Paperboard *	2	Freshwater	2
Fruits & Vegetables	32			Demersal	191
Roots & Tubers	285			Molluscs	0
Pulses	9				
Oilseeds & Nuts	1				
Sugar Crops	-				
Tobacco	-				
Fibre Crops	-				
Pulpwd.,Rnd&Split **	-				
Roundwood **	-				
Log:Saw&Veneer **	-				
Sawnwood **	-				
Wood Charcoal *	-				
Woodfuel **	-				
Wood Pulp *	-				
Wood-based Panels **	-				

Per Capita Agricultural Production Index



* 1000Tonnes ** 1000m³

Time reference= ⁹⁹⁻⁰¹:1999-2001, ⁰⁰:2000, ⁰²:2002, ⁰⁰⁻⁰²:2000-2002, ⁰³:2003, ⁰⁴:2004, ^{ly}:Latest Available Year



Country profiles

Namibia

Trade ⁰²

Agricultural Imports *	156
% 4 Major Imports in Agr.Imp	4
% Agr. Imports in Tot. Imports	12
Fishery Imports *	12
Forestry Imports *	36
Agricultural Exports *	180
% 4 Major Exports in Agr.Exp.	25
% Agr. Exports in Tot.Exports	18
Fishery Exports *	369
Forestry Exports *	-



Trade Partners & Products

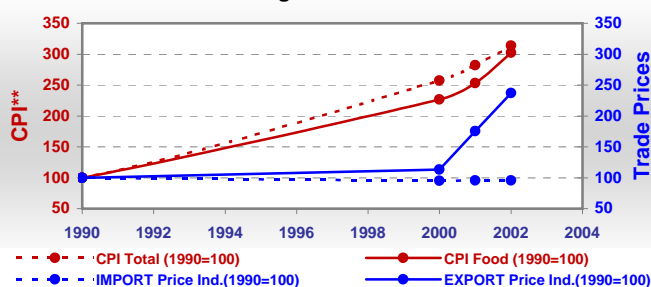
Major Import Partner	South Africa	Germany	USA
Major Export Partner	Angola	South Africa	Japan
Major Imports	Maize	Sugar,C. Raw	Food Wastes
Major Exports	Beer Barley	Bev Non-Alc	Fish Meal

* Million \$

Prices

Producer Prices ⁰⁰⁻⁰²	\$*	\$ Green *
Wheat	203	275
Rice	-	-
Maize	116	156
Soybean	-	-
Coffee	-	-
Tobacco	-	-
Cow Milk	256	348
Cattle (Live Weight)	649	887
Pig (Live Weight)	771	1 055
Chicken (Live Weight)	787	1 077

Consumer and Agricultural Trade Price Indices

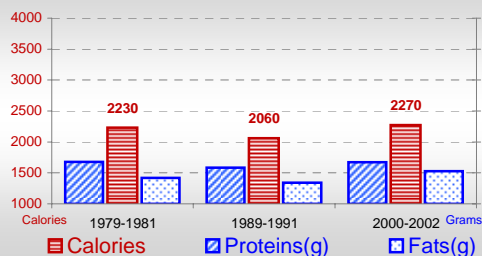


* per Tonne

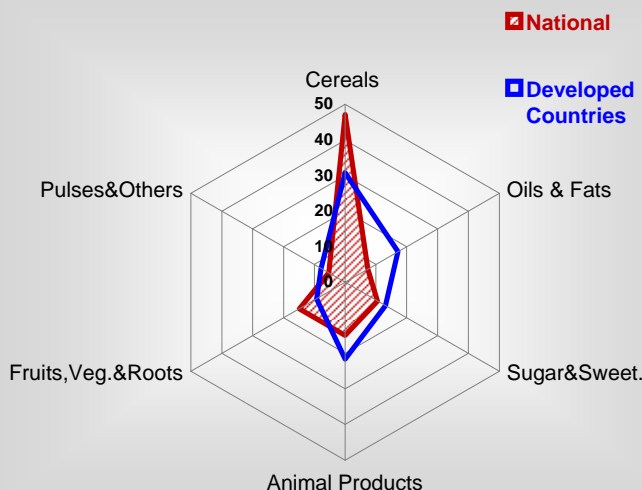
** CPI : Consumer Price Index

Consumption

Per Capita Daily Consumption



Source of Dietary Energy Consumption % ⁰⁰⁻⁰²



Per Capita Daily Calorie Intake From Selected Food Items ⁰⁰⁻⁰²

Rice	35
Wheat	351
Maize	335
Sorghum	25
Potatoes	17
Cassava	1
Sugar	224
Soybean Oil	3
Palm Oil	-
Milk	106
Anim.Fats(Raw&Butter)	56
Eggs	5
Pig Meat	18
Poultry Meat	46
Bovine Meat	96
Sheep & Goats Meat	15

Food Balance ⁰⁰⁻⁰² (1000Tonnes)

Food Groups	Production (+)	Exports (-)	Imports (+)	Seed, Feed, Other Uses (-)	Consumption (=)
Cereals	109	9	192	39	253
Veg.oils	1	1	9	0	9
Sugar&Sw.	-	10	59	3	46
Roots&Tub.	270	2	21	54	235
Meat	83	35	23	-8	79
Milk	95	5	60	13	137

Time reference= ⁹⁹⁻⁰¹:1999-2001, ⁰⁰:2000, ⁰²:2002, ⁰⁰⁻⁰²:2000-2002, ⁰³:2003, ⁰⁴:2004, ^{ly}:Latest Available Year