



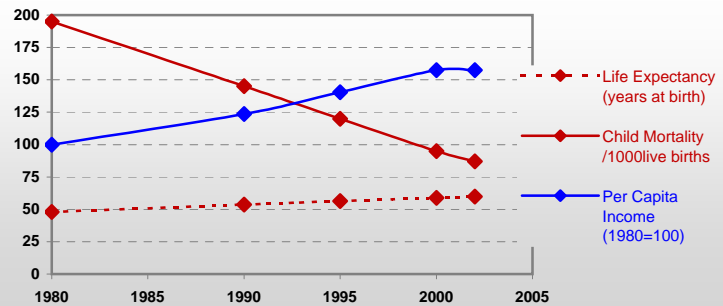
Country profiles

Nepal



General / Welfare

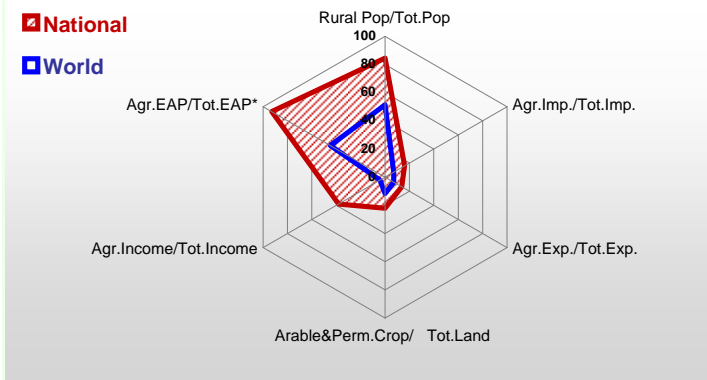
Population ^{04 *}	25 725
Per Capita Income ^{02 **}	241
Per Capita Agricultural Income ^{02**}	96
Total Exports ^{02 ****}	603
Total Imports ^{02 ****}	1 378
Agric. External Assistance ^{99-01 ***}	450 223
Food Consumption Inequality (G) ^{ly}	0,15
Income Inequality (G) ^{ly}	0,37
Land Inequality (G) ^{ly}	0,45
Undernourished Population % ⁰⁰⁻⁰²	17



* 1000 ** \$ *** 1000 \$ **** Million \$ --- (G) : Gini Coefficient --- Income refers to GDP at 1995 Constant Prices

Agriculture In The Economy^{ly}

Resources

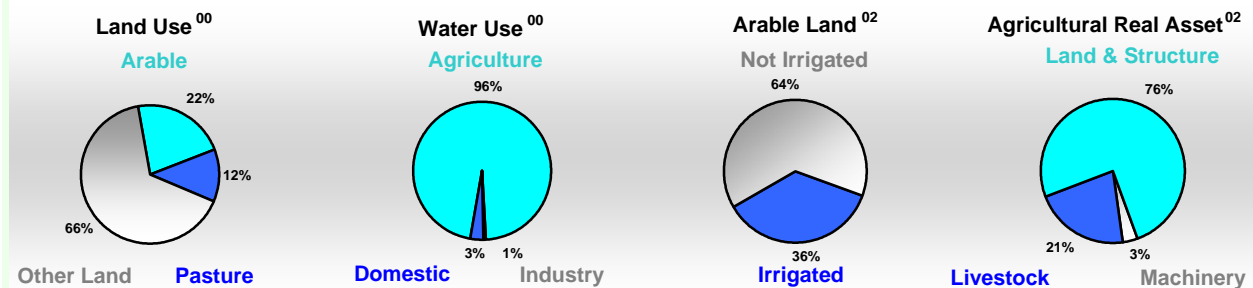


Arable Land ^{00 *}	3 050
Permanent Crops ^{00 *}	90
Pasture ^{00 *}	1 745
Cattle & Buffaloes ^{03 **}	10 750
Sheep & Goats ^{03 **}	7 500
Tractors ^{02 *}	1
Harvesters&Threshers ^{02 *}	-
Fertilizers Production ^{02 ***}	-
Fertilizers Consumption ^{02 ***}	89 038
Rainfall Index ^{02 (mm)}	1 648

* EAP : Economically Active Population

* 1000ha ** 1000heads *** Tonnes N,P₂O₅,K₂O

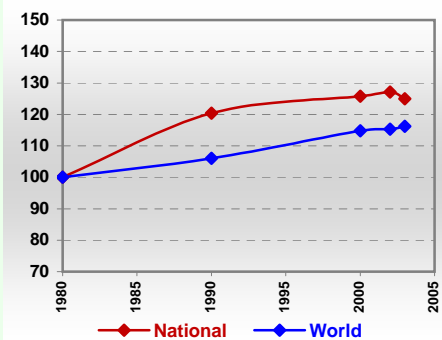
Resources Distribution



Production

Agriculture^{03 *}		Pulpwd.,Rnd&Split^{**}	-
Cereals	7 745	Roundwood ^{**}	13 988
Meat	257	Log:Saw&Veneer ^{**}	1 260
Fruits & Vegetables	2 540	Sawnwood ^{**}	630
Roots & Tubers	1 748	Wood Charcoal [*]	66
Pulses	262	Woodfuel ^{**}	12 728
Oilseeds & Nuts	54	Wood Pulp [*]	-
Sugar Crops	2 305	Wood-based Panels ^{**}	5
Tobacco	3	Fisheries^{02 *}	
Fibre Crops	17	Pelagic	-
Forestry⁰²		Freshwater	35
Indust.Roundwood ^{**}	1 260	Demersal	-
Paper, Paperboard [*]	13	Molluscs	-

Per Capita Agricultural Production Index



* 1000Tonnes ** 1000m³

Time reference= ⁹⁹⁻⁰¹ :1999-2001, ⁰⁰ :2000, ⁰² :2002, ⁰⁰⁻⁰² :2000-2002, ⁰³ :2003, ⁰⁴ :2004, ^{ly} :Latest Available Year

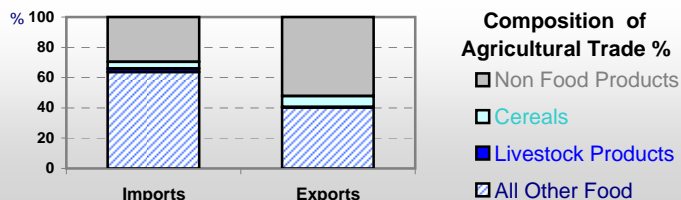


Country profiles

Nepal

Trade ⁰²

Agricultural Imports *	228
% 4 Major Imports in Agr.Imp	2
% Agr. Imports in Tot. Imports	16
Fishery Imports *	0
Forestry Imports *	2
Agricultural Exports *	76
% 4 Major Exports in Agr.Exp.	0
% Agr. Exports in Tot.Exports	14
Fishery Exports *	-
Forestry Exports *	2



Trade Partners & Products

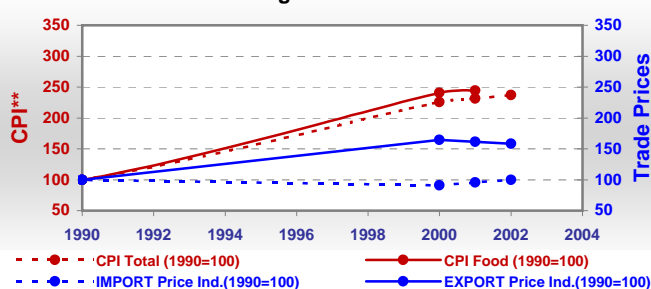
Major Import Partner			
Major Export Partner			
Major Imports	Oil of Palm	Oil Soyabean	Wool,Scoured
Major Exports	Oils Hydrogn	Pulses nes	Lentils

* Million \$

Prices

Producer Prices ⁰⁰⁻⁰²	\$*	\$ Green *
Wheat	130	146
Rice	118	132
Maize	125	139
Soybean	-	-
Coffee	-	-
Tobacco	584	654
Cow Milk	262	294
Cattle (Live Weight)	524	591
Pig (Live Weight)	728	818
Chicken (Live Weight)	954	1 071

Consumer and Agricultural Trade Price Indices

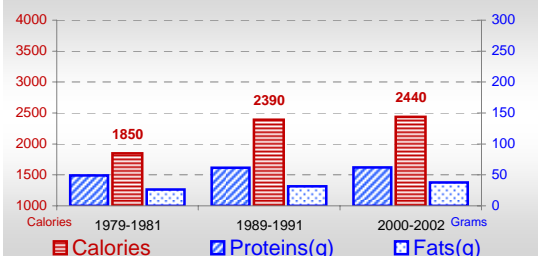


* per Tonne

** CPI : Consumer Price Index

Consumption

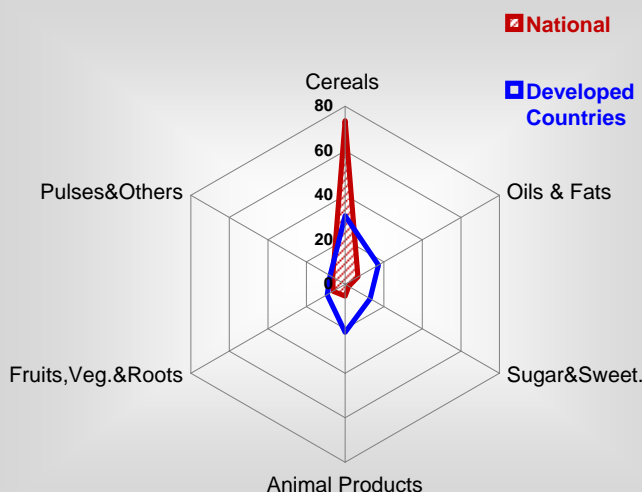
Per Capita Daily Consumption



Per Capita Daily Calorie Intake From Selected Food Items ⁰⁰⁻⁰²

Rice	940
Wheat	347
Maize	410
Sorghum	-
Potatoes	76
Cassava	-
Sugar	44
Soybean Oil	17
Palm Oil	58
Milk	81
Anim.Fats(Raw&Butter)	28
Eggs	4
Pig Meat	6
Poultry Meat	2
Bovine Meat	23
Sheep & Goats Meat	7

Source of Dietary Energy Consumption % ⁰⁰⁻⁰²



Food Balance ⁰⁰⁻⁰² (1000Tonnes)

Food Groups	Production (+)	Exports (-)	Imports (+)	Seed, Feed, Other Uses (-)	Consumption (=)
Cereals	5 761	10	105	1 191	4 665
Veg.oils	73	40	137	36	134
Sugar&Sw.	90	1	25	0	114
Roots&Tub.	1 426	1	12	348	1 089
Meat	242	-	-	0	242
Milk	1 202	-	5	253	954

Time reference= ⁹⁹⁻⁰¹:1999-2001, ⁰⁰:2000, ⁰²:2002, ⁰⁰⁻⁰²:2000-2002, ⁰³:2003, ⁰⁴:2004, ^{ly}:Latest Available Year